

The Indiana Data Sharing Initiative: Past, Present, and Future

MEGAN COMPTON, INDIANA GIO,
INDIANA OFFICE OF TECHNOLOGY

JIM SPARKS, DIRECTOR OF
GEOINFORMATICS, THE POLIS CENTER AT
INDIANA UNIVERSITY (AND FORMER GIO)

“When agencies share data, lives are saved and public offices become more efficient. Sharing data encourages collaboration among agencies, provides for informed decision-making and reduces redundancy of data production. Further, planning and policy groups become better informed, particularly in terms of emergency calls and disaster response. We can be proud that all 92 counties are now sharing their map data, a major milestone that will benefit all Indiana taxpayers.”

- David Vice, Executive Director of the Indiana Integrated Public Safety Commission

“Having accurate land parcels, road centerlines and other data already integrated in statewide data layers before the event saved a lot of time in a situation in which every minute was critical.”

- Vicky Kent Haire, Clark County Assessor regarding the emergency response to the 2012 tornadoes that devastated parts of southern Indiana.



"Access to reliable local GIS data is vital to helping us understand how our communities and economy are growing and changing and enable us to make more informed decisions in our economic development strategy and efforts."

- Tim Monger, President and CEO, Hamilton County Economic Development Corporation



Benefits of Open Data



Recent Deloitte study:



Open Growth:

“Stimulating Demand for Open Data in the UK”

- > **Data is the ‘raw material’ of the 21st Century;**
- > **Opening the data up unlocks its full potential;**
- > **Describes new businesses emerging;**



Which categories of open data are most widely applicable to the most sectors?

#1 Geospatial data

Source: Deloitte LLP/ODI analysis

Indiana Data Sharing Initiative

- Letters were sent to all Indiana County Commissioners 7/2008 inviting county participation to create statewide layers for:
 - Land Parcels
 - Point addresses
 - Road Centerlines with address ranges
 - Local Administrative Boundaries
- First county agreed to participate 8/2008
- 92nd (last county) agreed to participate 10/2014

Indiana Data Sharing Initiative

Color Code:

 Undecided

 Agreed to participate

 Decided not to participate

Indiana Data Sharing Initiative

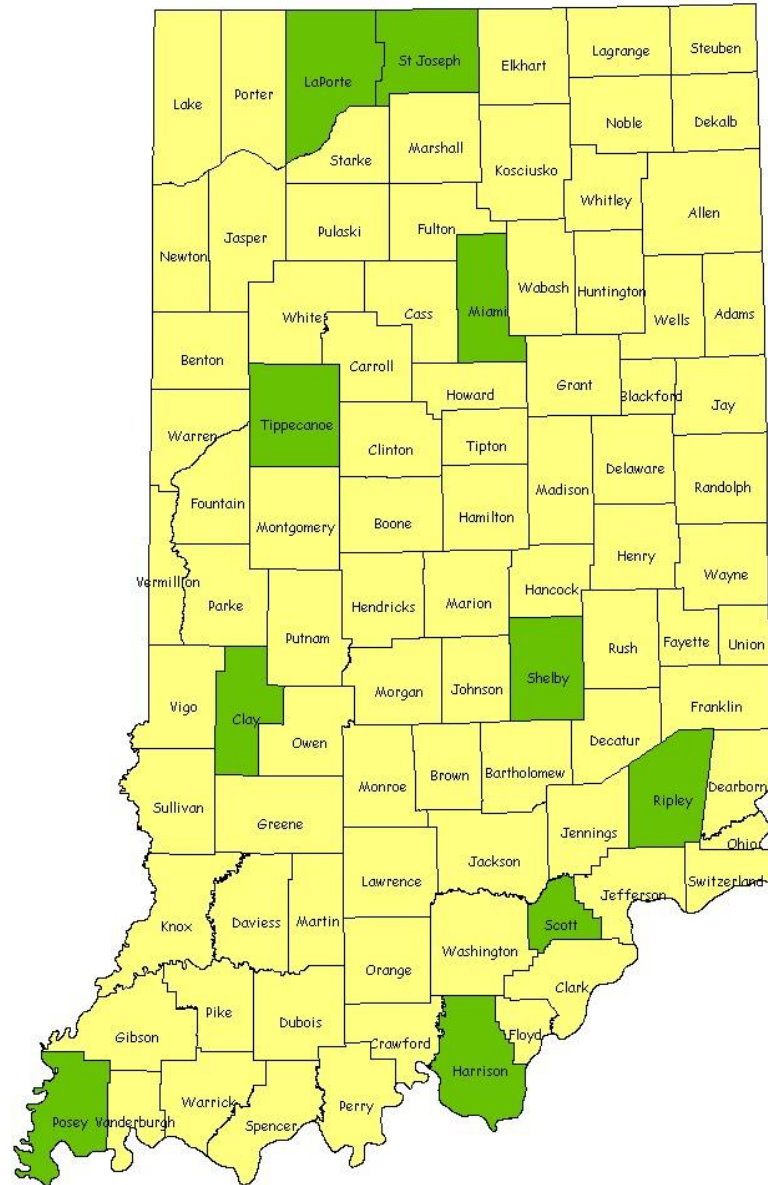
July 14,
2008



01

Indiana Data Sharing Initiative

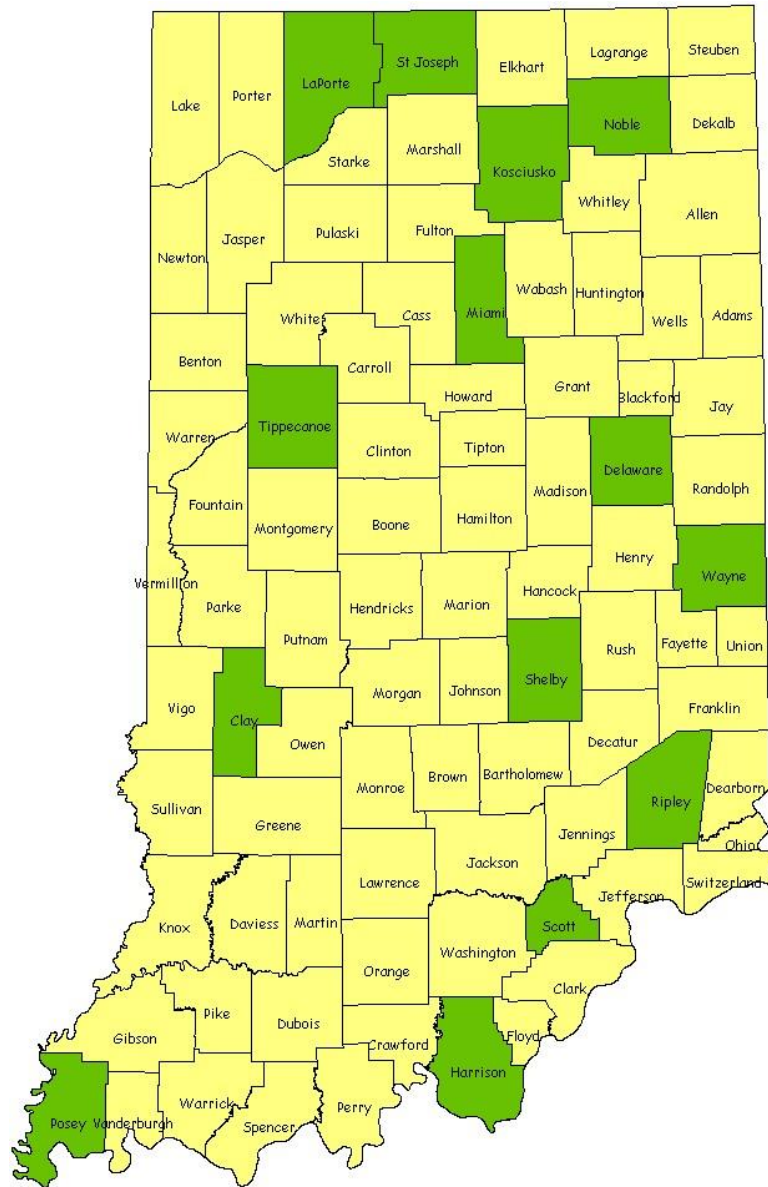
August 18,
2008



10

Indiana Data Sharing Initiative

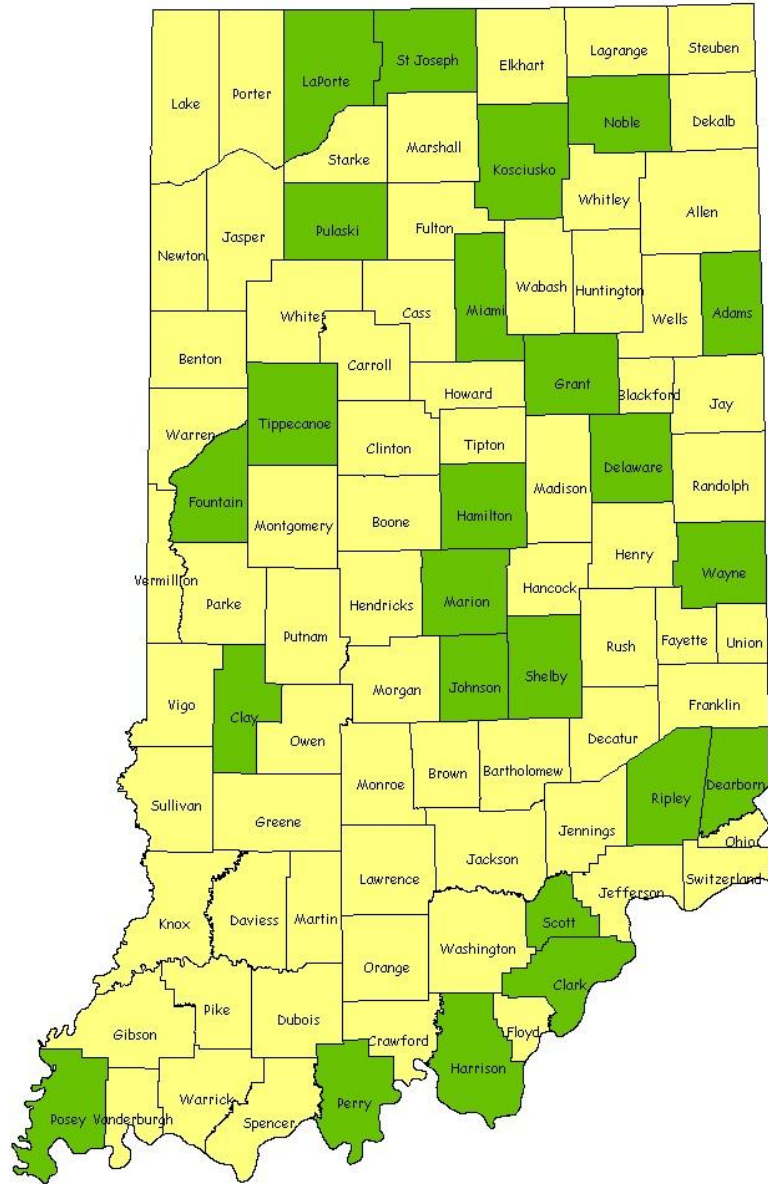
September
10, 2008



14

Indiana Data Sharing Initiative

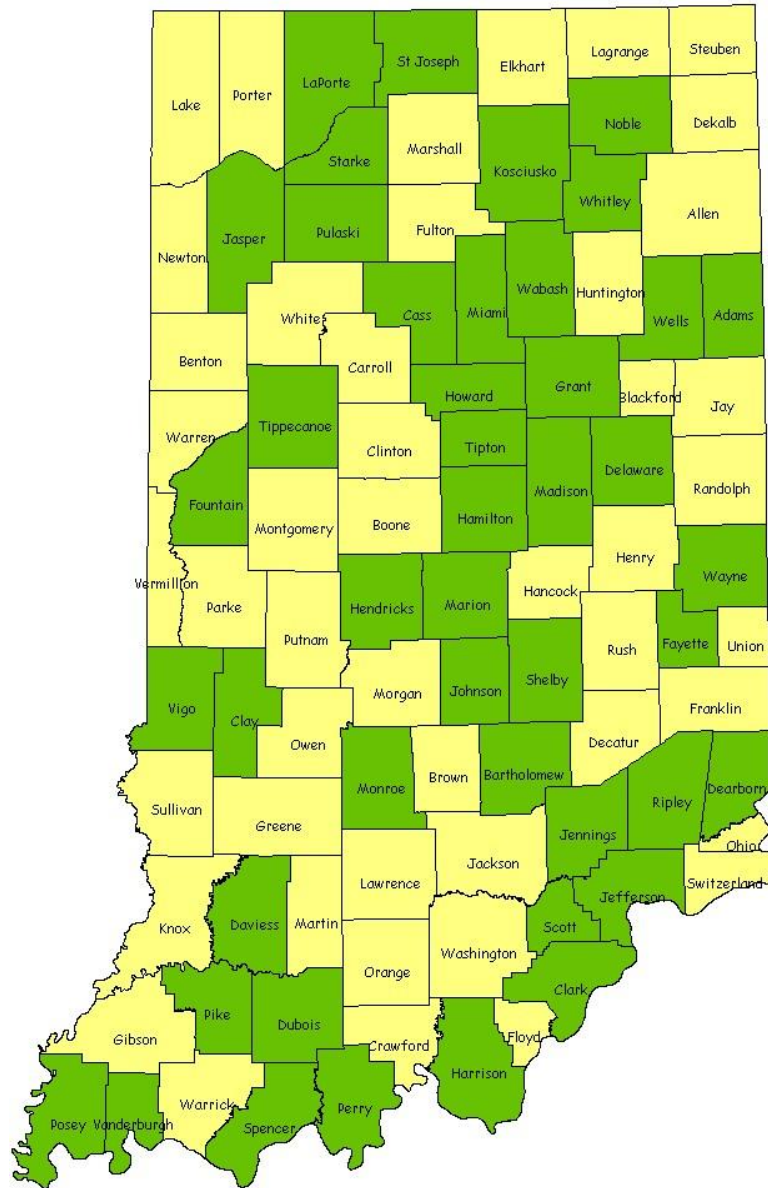
November 12,
2008



24

Indiana Data Sharing Initiative

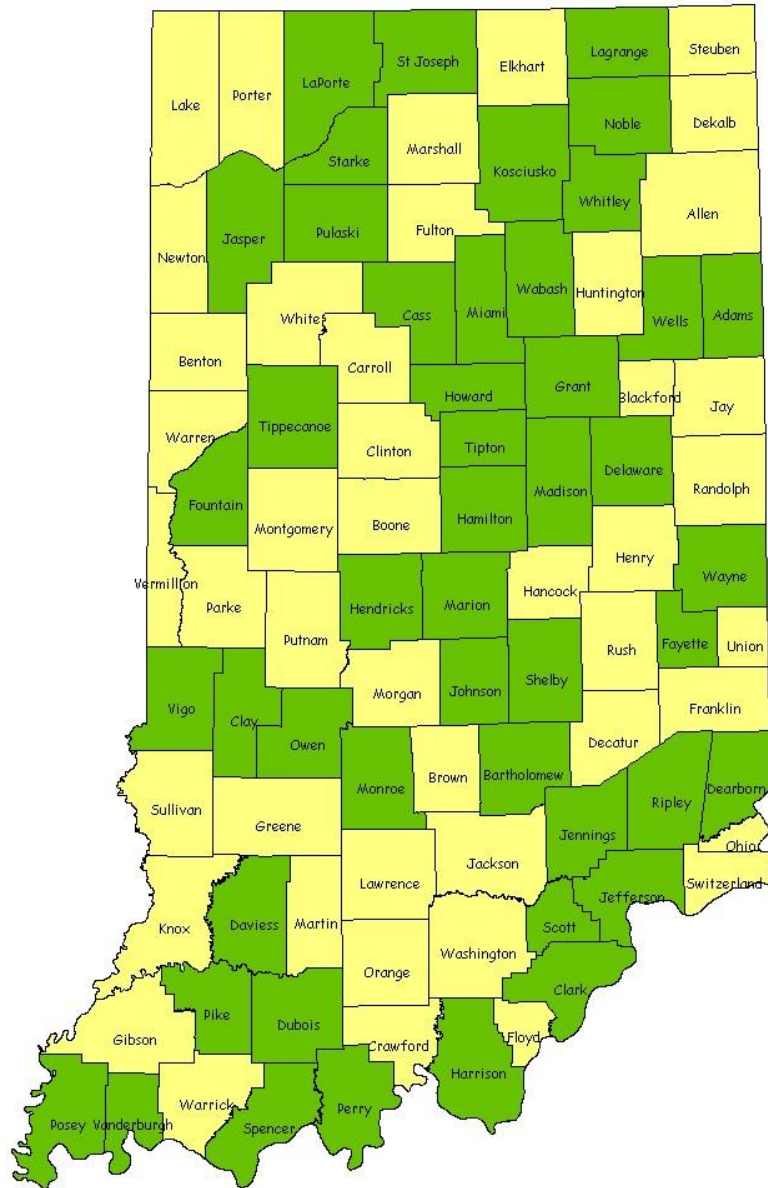
February 9,
2009



45

Indiana Data Sharing Initiative

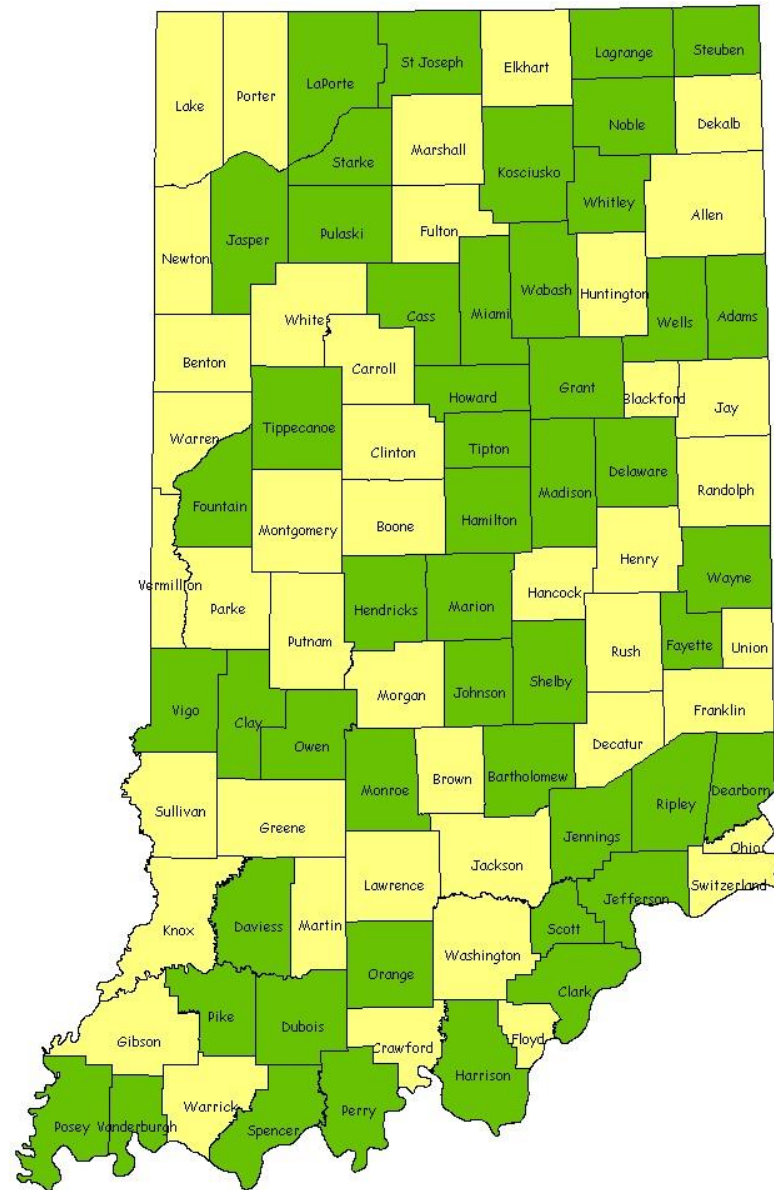
February 10,
2009



47

Indiana Data Sharing Initiative

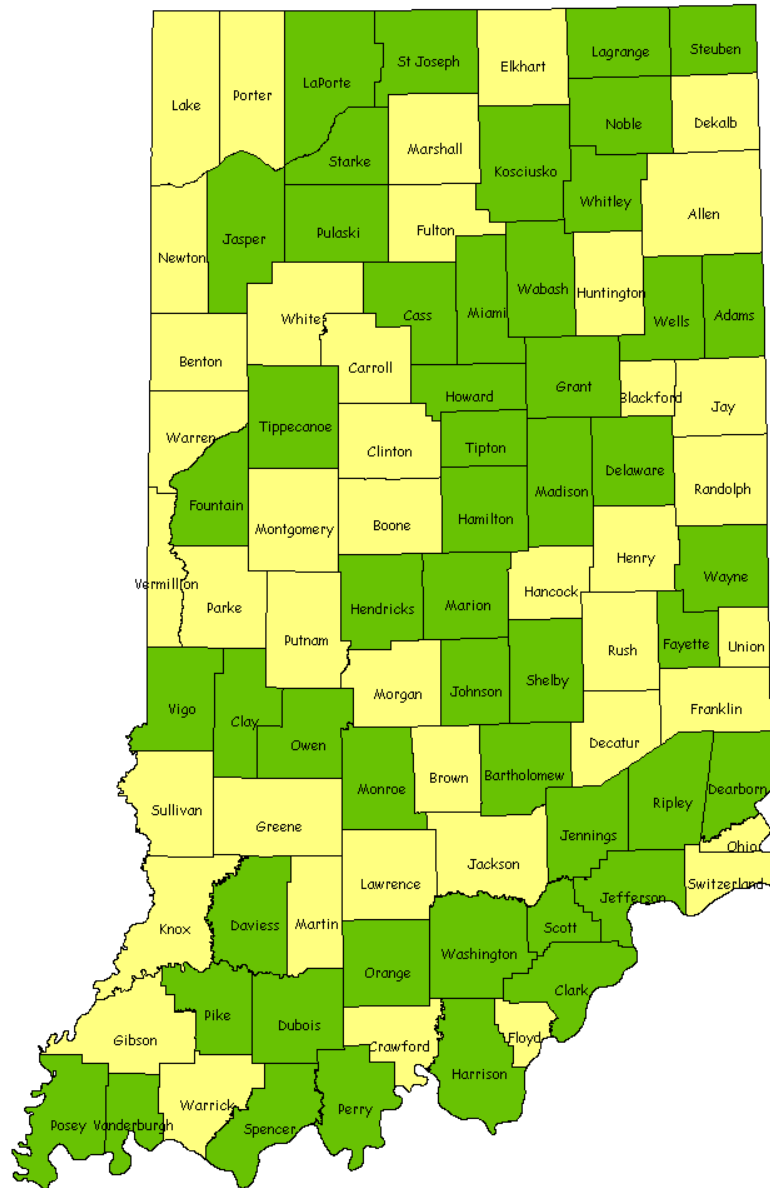
February 20,
2009



49

Indiana Data Sharing Initiative

March 6,
2009

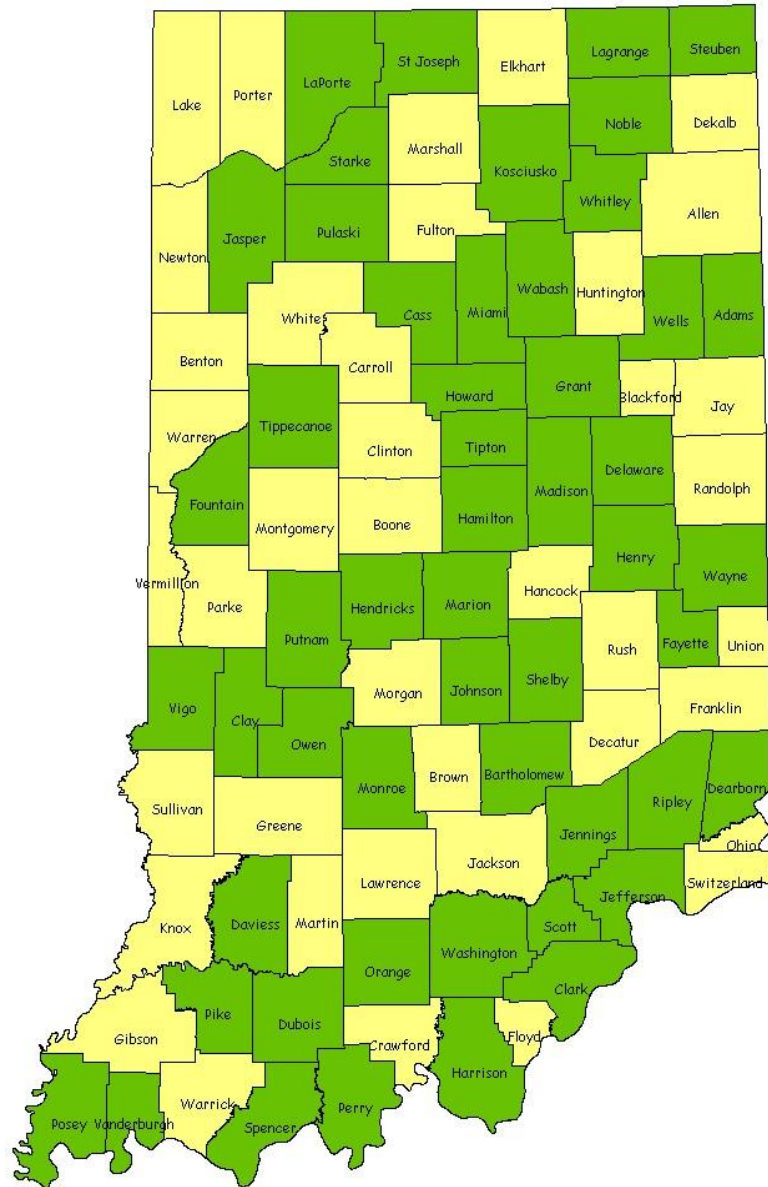


50

Indiana Data Sharing Initiative

March 22,
2009

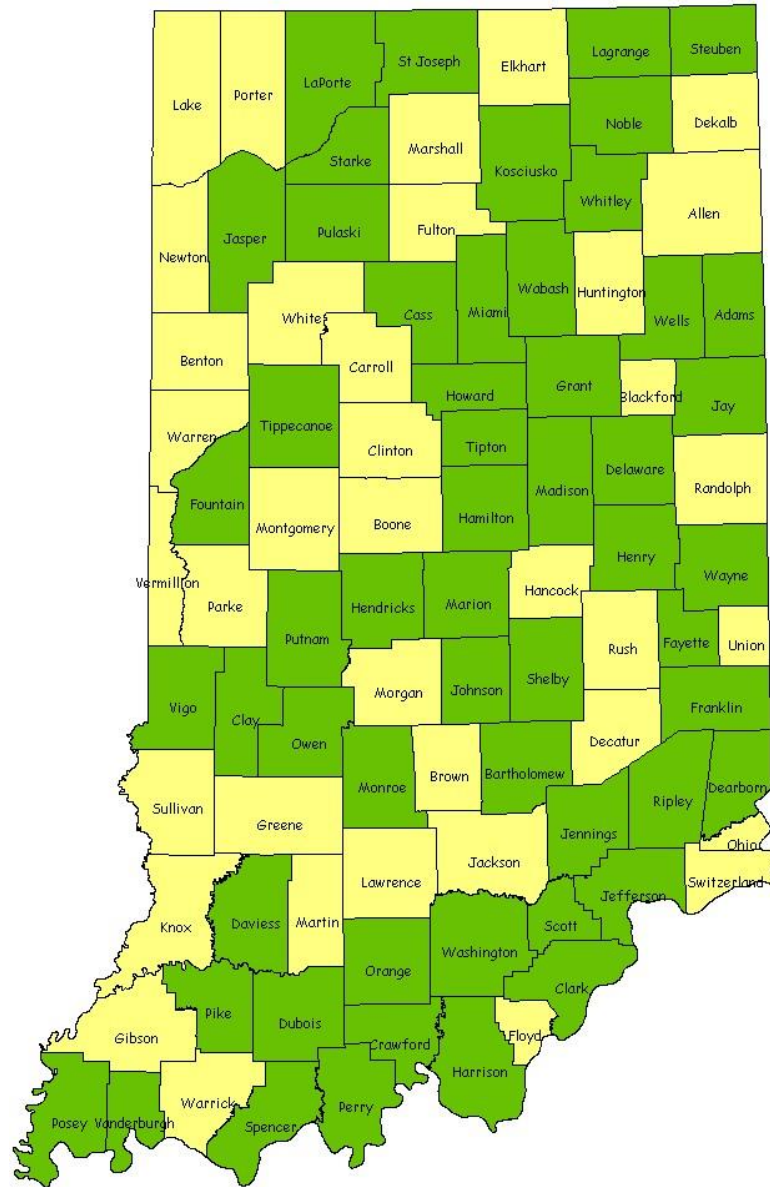
**VERY SPATIAL
PODCAST
EPISODE 192**



52

Indiana Data Sharing Initiative

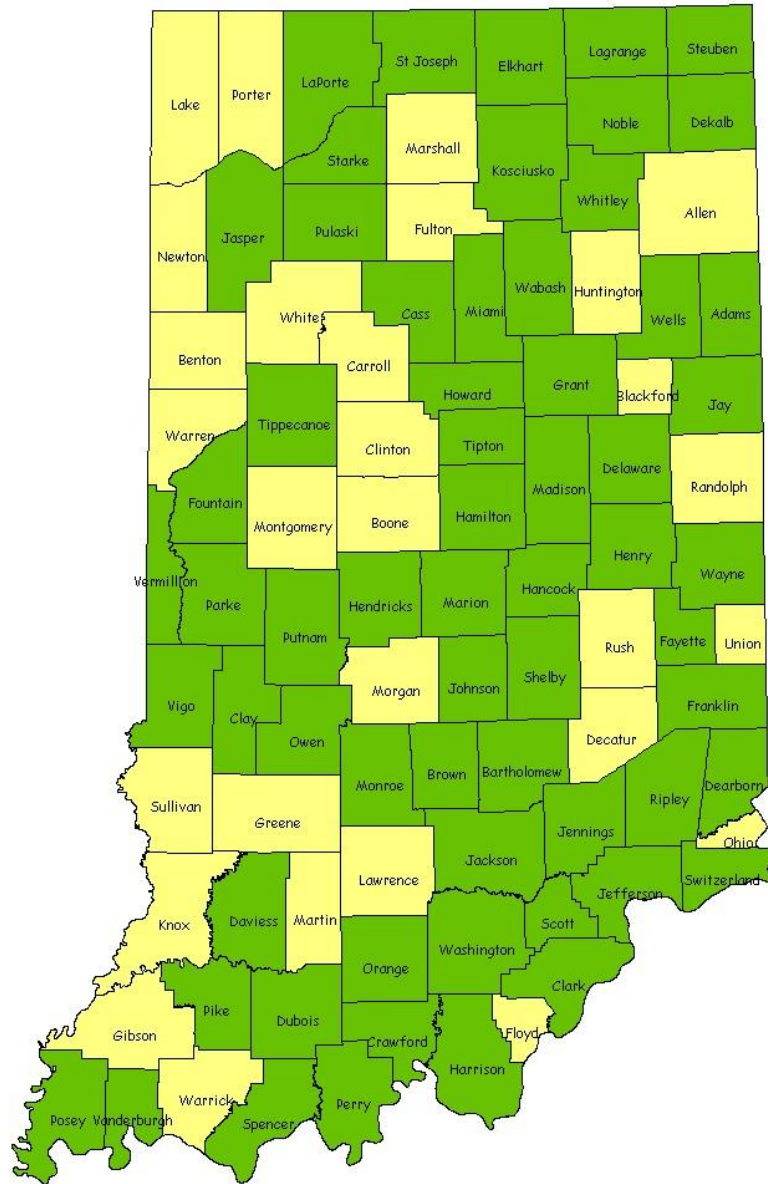
April 29,
2009



55

Indiana Data Sharing Initiative

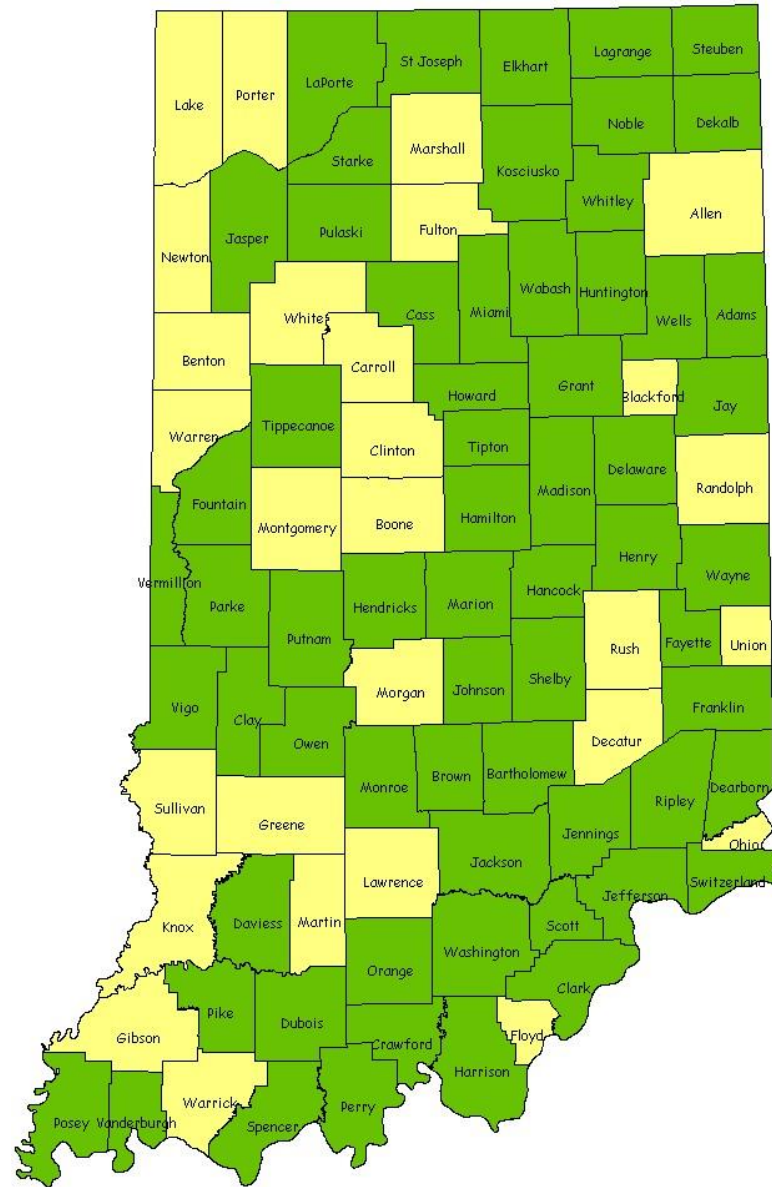
May 5,
2009



58

Indiana Data Sharing Initiative

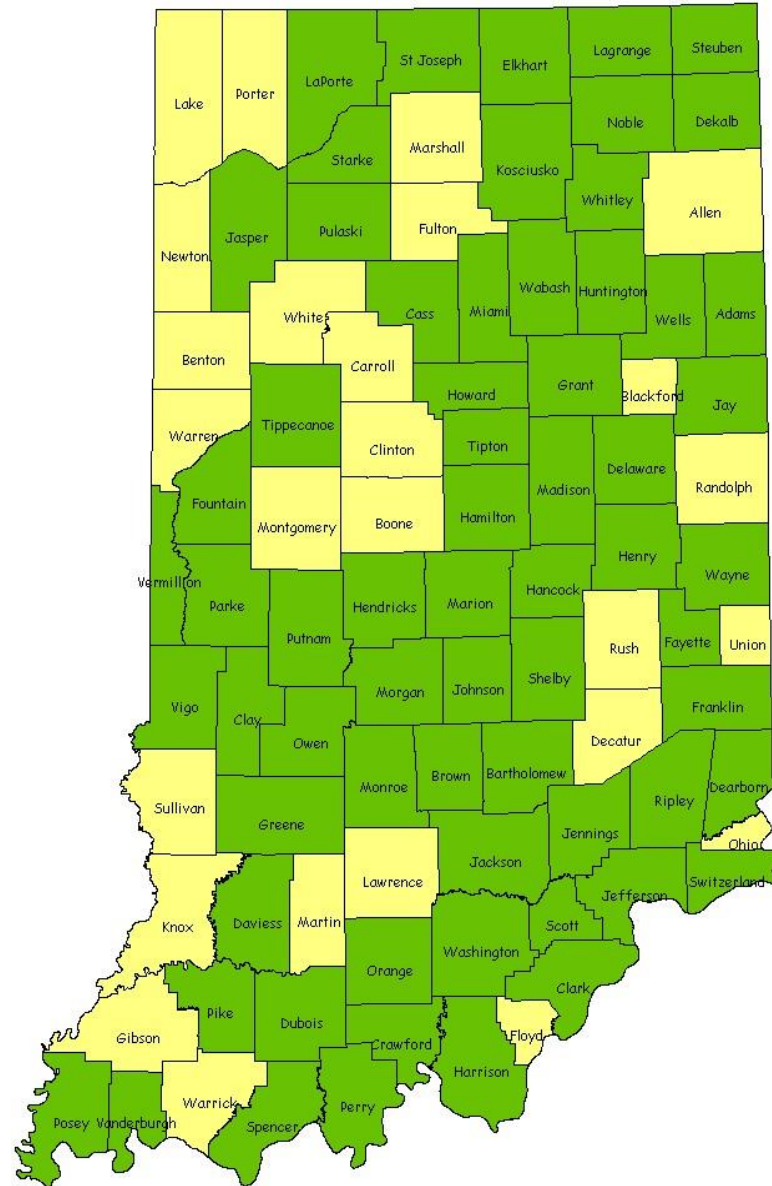
May 15,
2009



64

Indiana Data Sharing Initiative

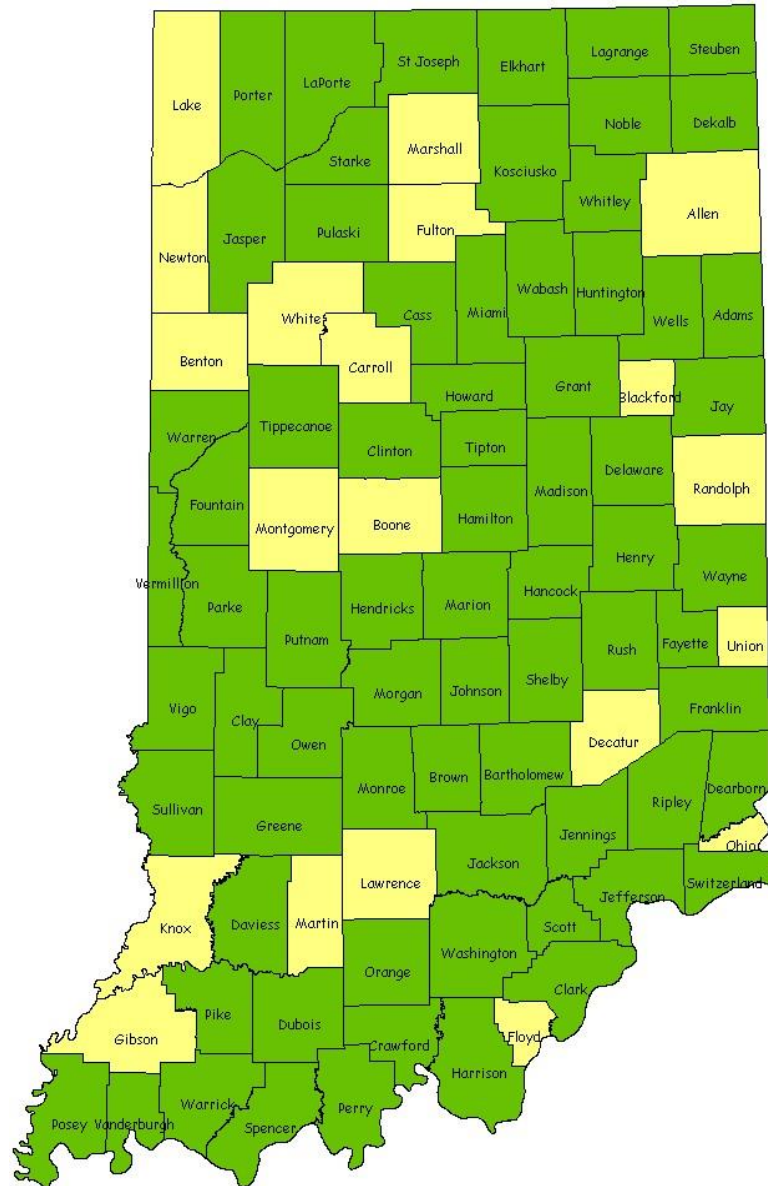
June 3,
2009



66

Indiana Data Sharing Initiative

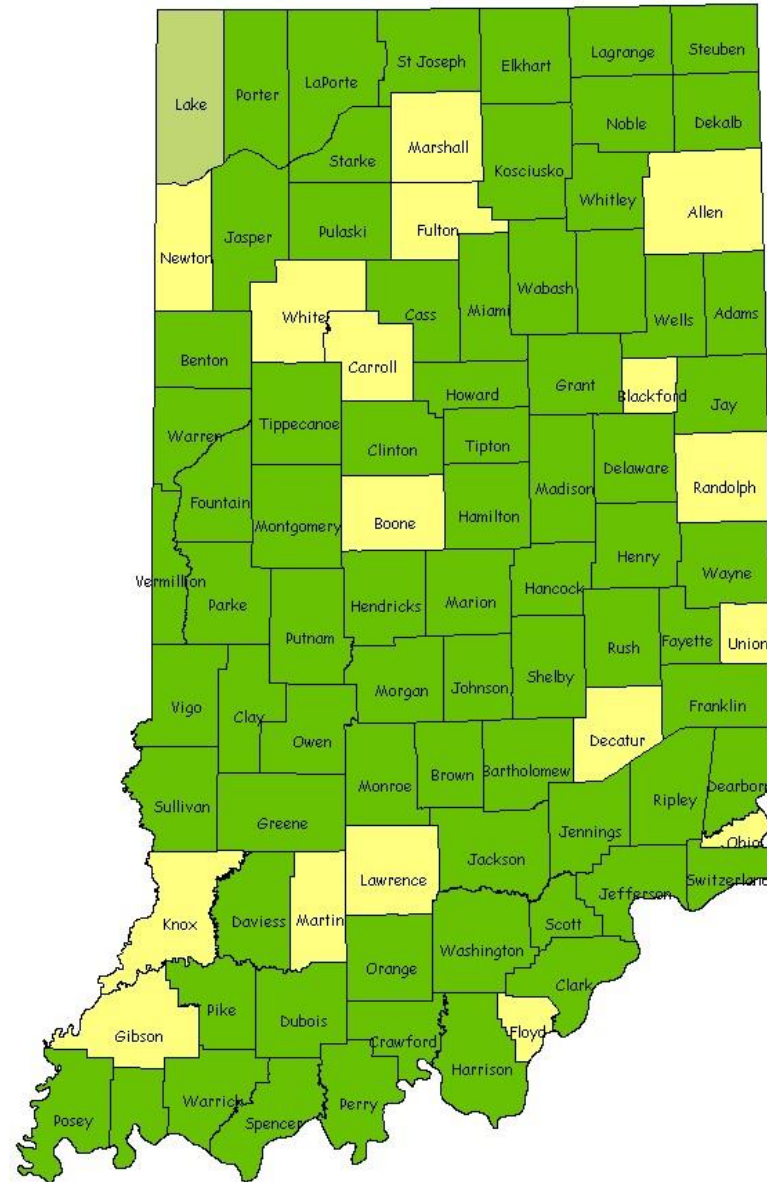
July 13,
2009



72

Indiana Data Sharing Initiative

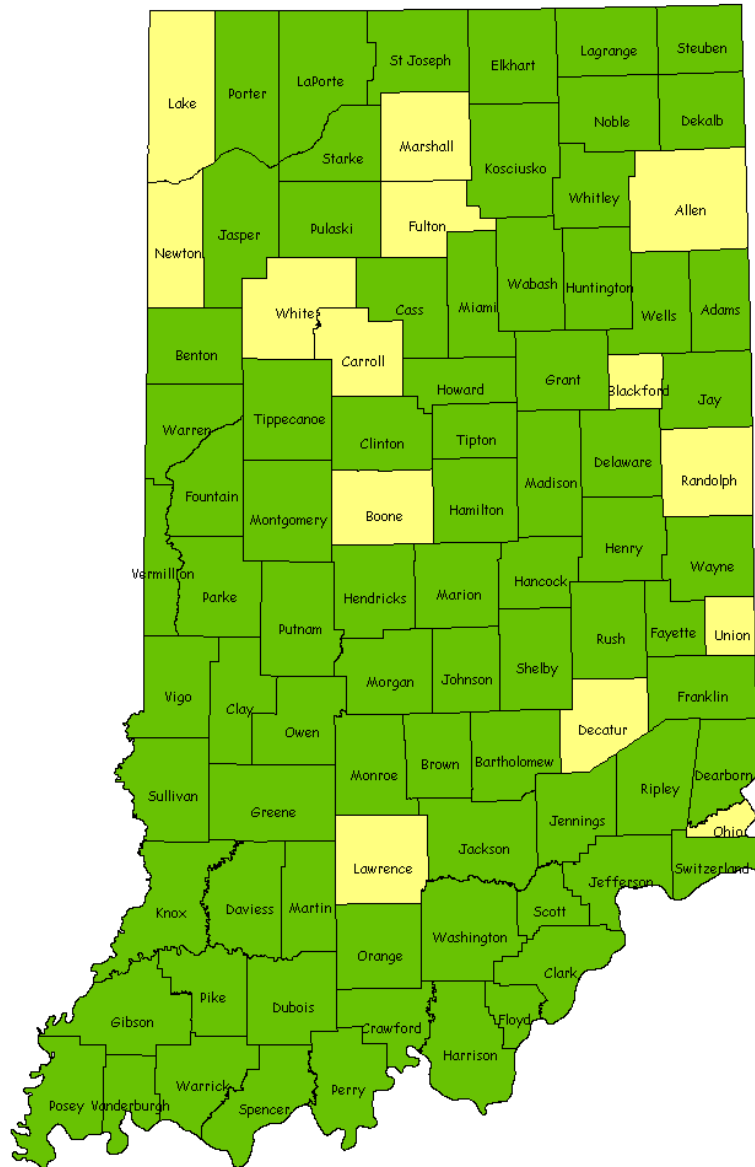
September
26, 2009



74

Indiana Data Sharing Initiative

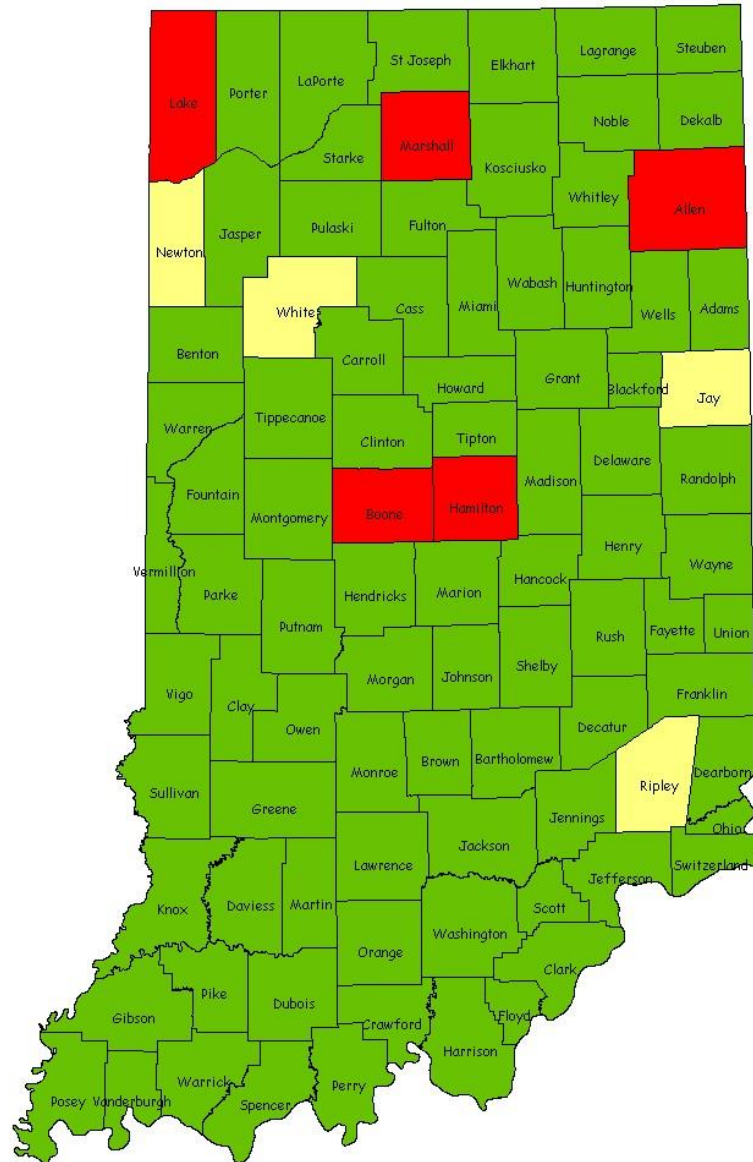
November
18, 2009



78

Indiana Data Sharing Initiative

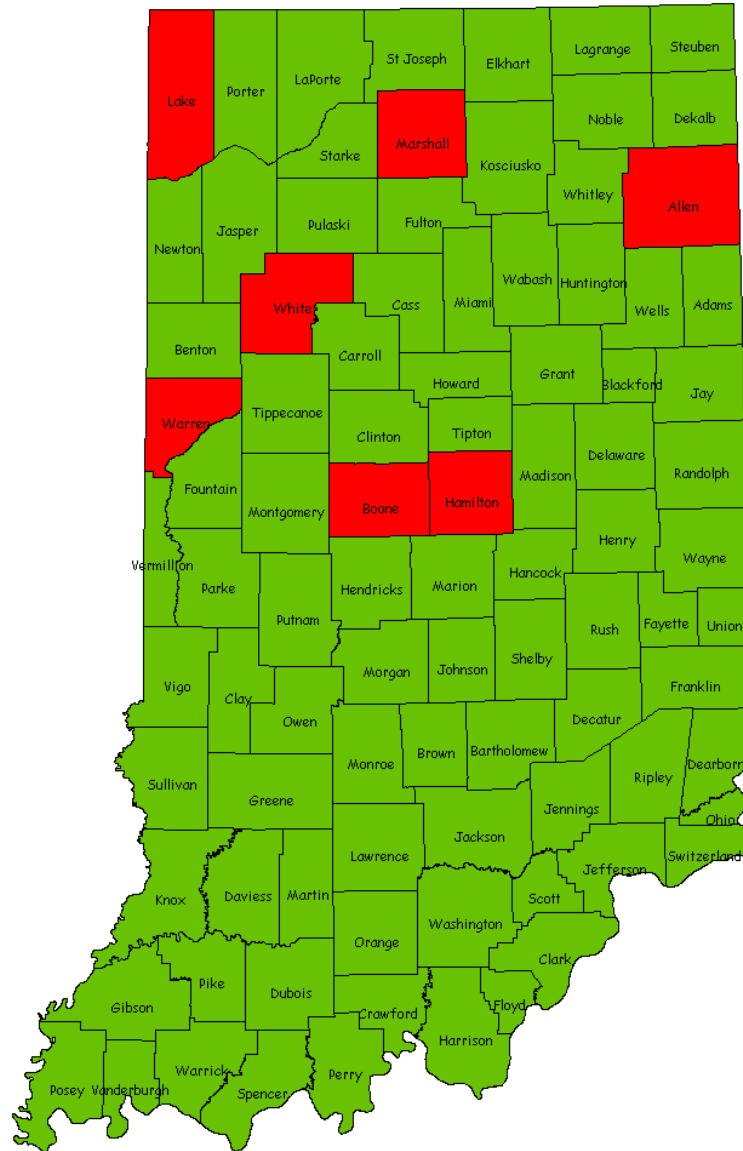
February 5,
2010



83

Indiana Data Sharing Initiative

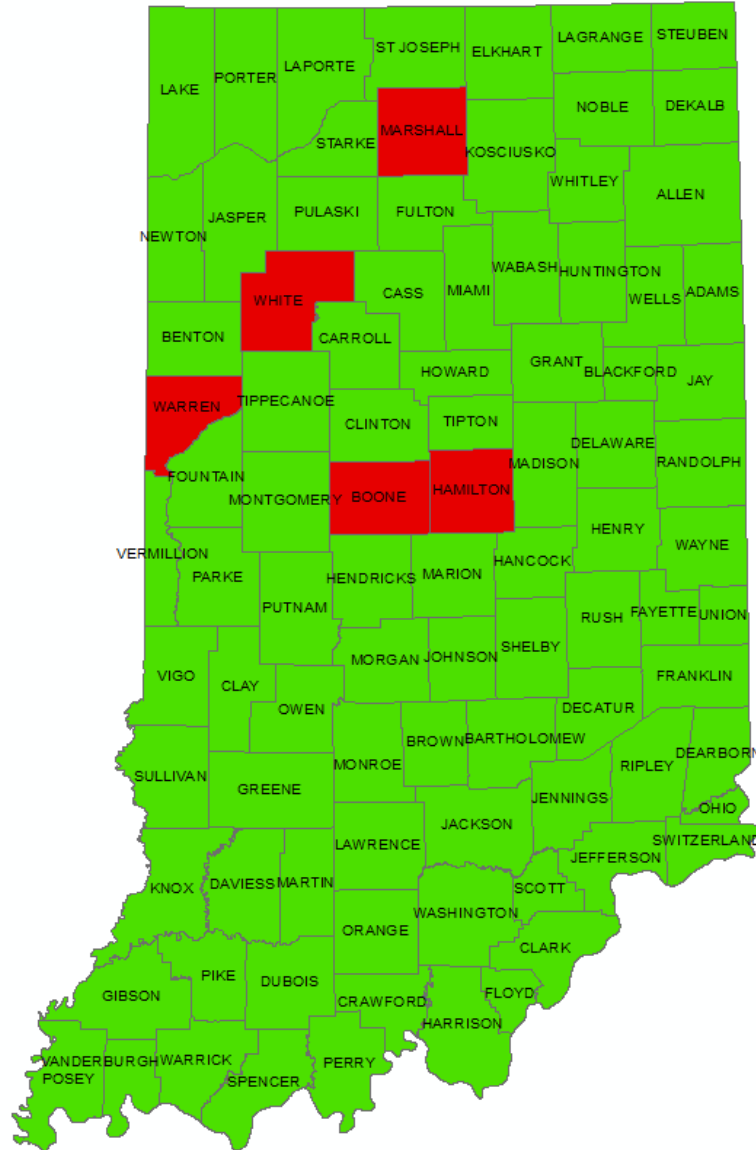
April 1, 2010



85

Indiana Data Sharing Initiative

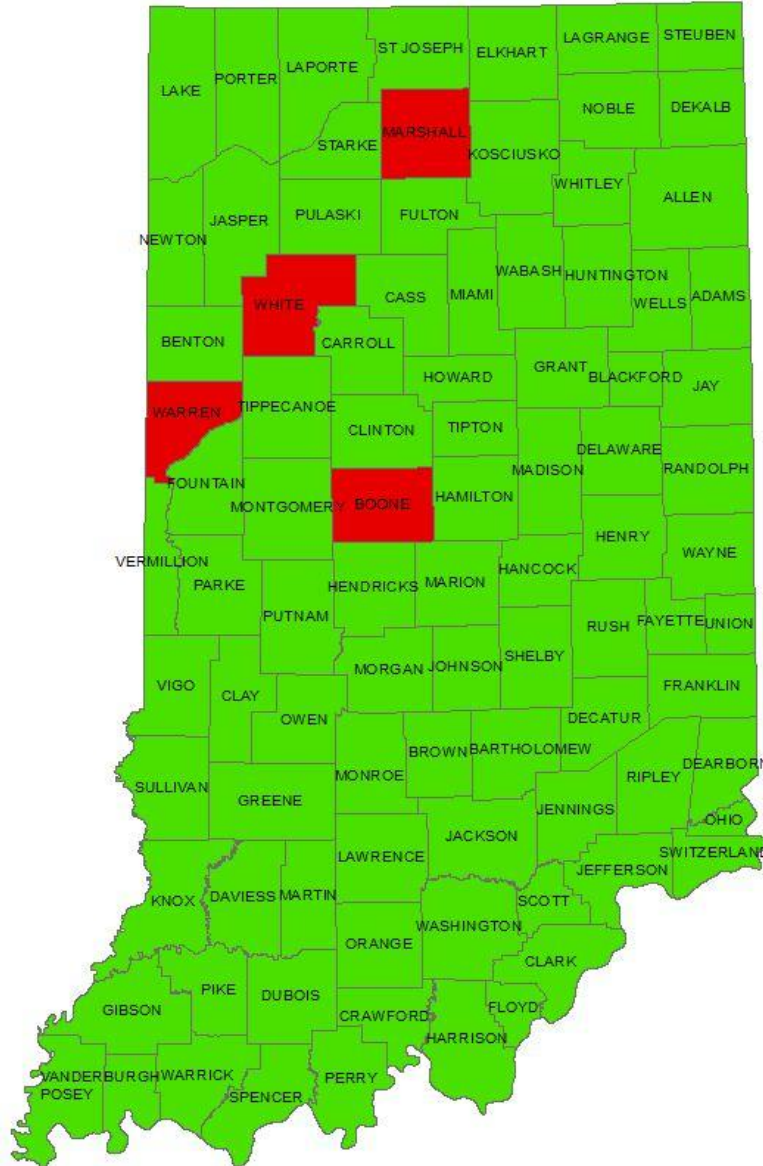
May 15, 2012



87

Indiana Data Sharing Initiative

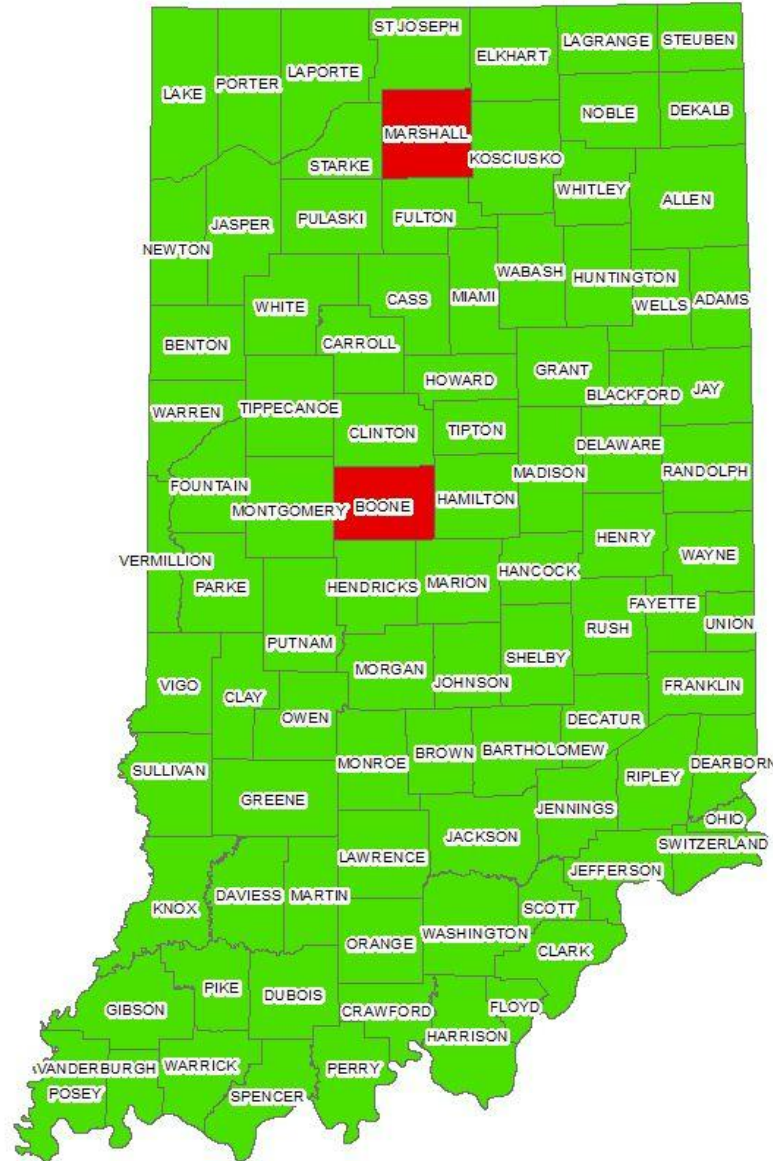
June 5, 2013



88

Indiana Data Sharing Initiative

March 1,
2014



90

Indiana Data Sharing Initiative

October 20,
2014



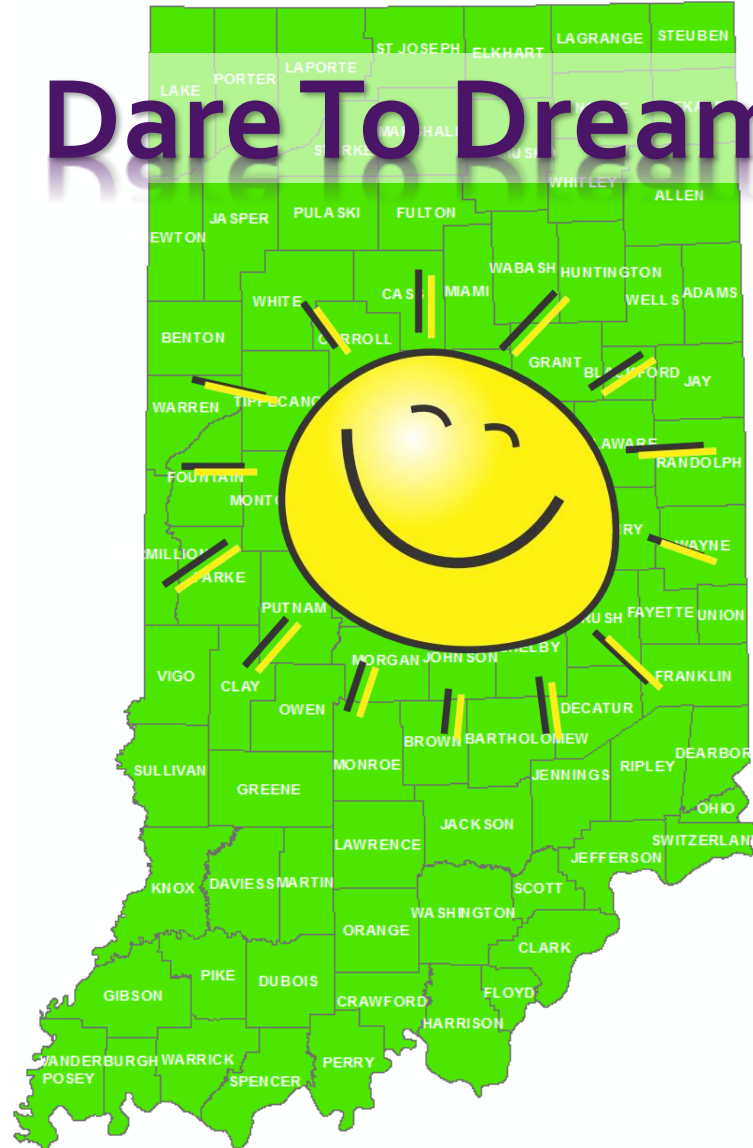
91

Indiana Data Sharing Initiative

Dare To Dream!

April 6, 2015

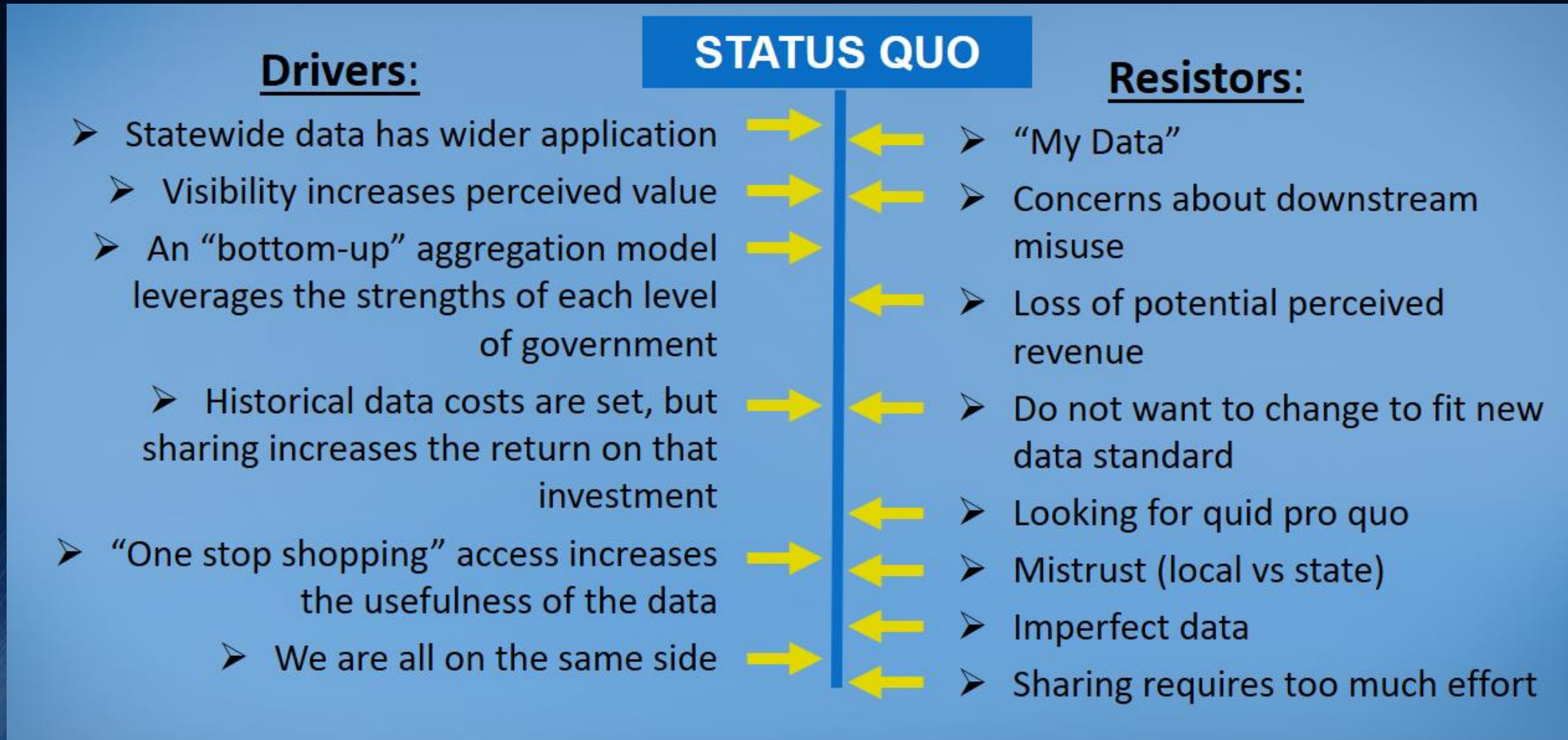
92



Manage Change

LESSONS LEARNED

Change Model: Indiana Data Sharing

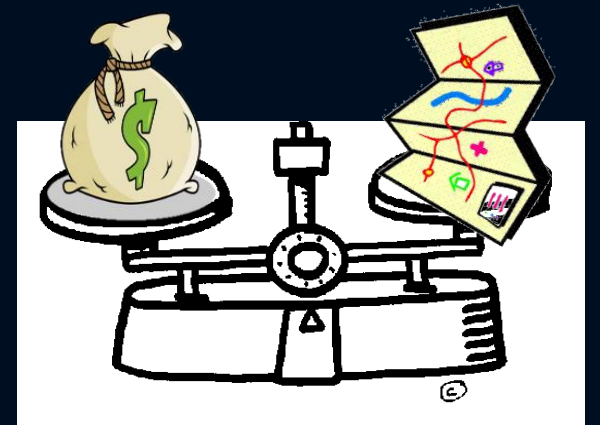


Reducing Resistors is more effective than adding Drivers*

*See Kurt Lewin's Theory of Change Management

Reducing Resistance

- Resistor: “My Data” caused by:
 - The desire to sell data which would be impacted by giving it to the GIO
 - Concerns about privacy, downstream use, businesses making a profit from gov data
- Removing or reducing resistor:
 - Request only what is essential (small subset of data)
 - Reminders that this is public data governed by Indiana APRA



Reducing Resistance

- Resistor: Counties don't want to change format of their data (how they do business)
 - Recognize that counties have invested in their data creation/maintenance processes
 - Their processes grew out of their business needs – it works for them!
- Removing or reducing resistor:
 - We (state) changed data format on the back end so counties did not need to change.



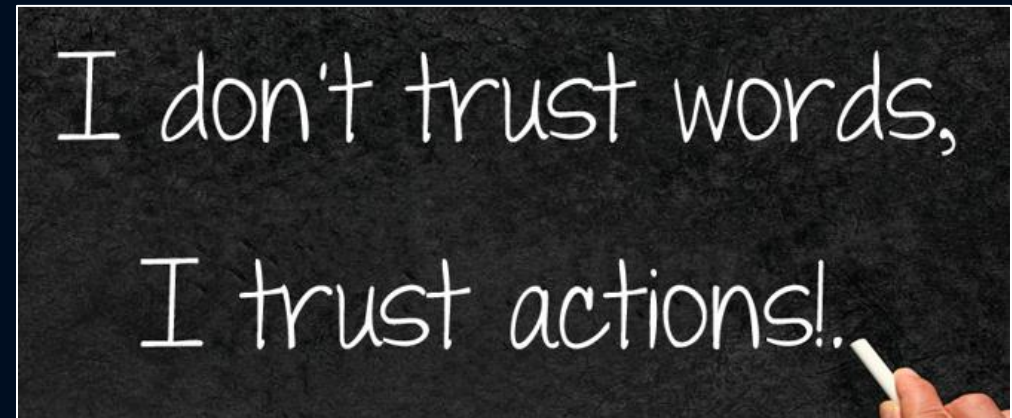
Reducing Resistance

- Resistor: Counties want something in exchange for their data
- Removing or reducing resistor:
 - State initially provided a modest amount of funding to cover vendor cost of hosting and transferring data
 - State has provided ortho (x3) and LiDAR data, or financial equivalent, to counties.



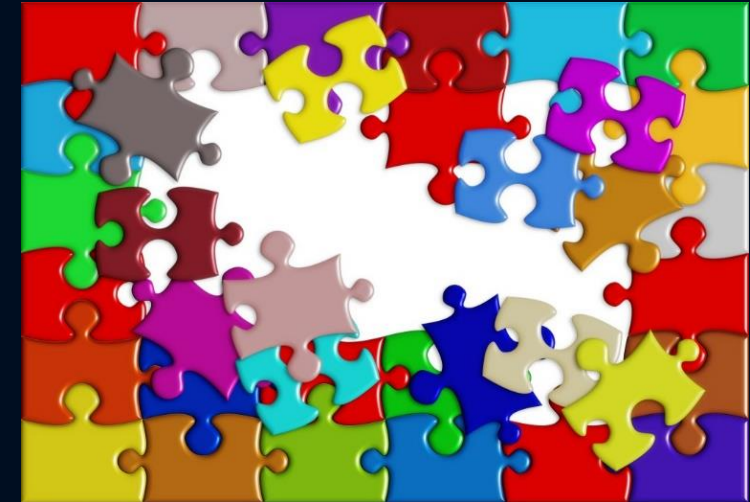
Reducing Resistance

- Resistor: Mistrust between county and state
- Removing or reducing resistor:
 - Develop relationships over time
 - Reinforce common goals
 - Meet face-to-face to reduce misunderstandings caused by communication “noise”.



Reducing Resistance

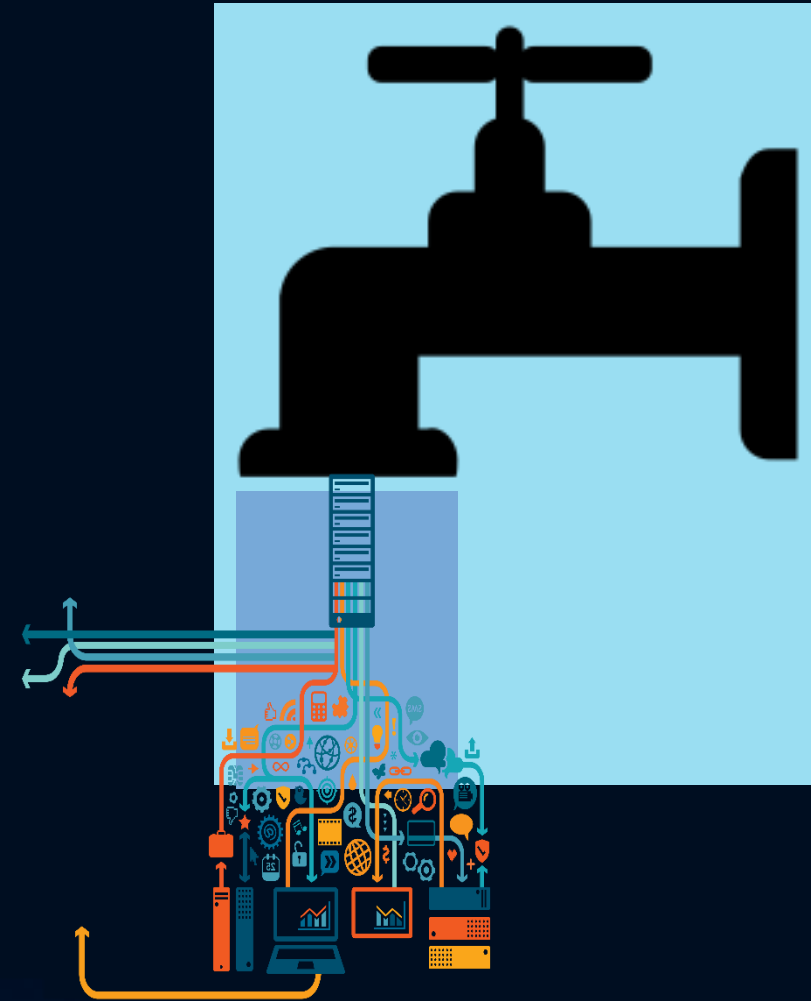
- Resistor: Concern about sharing imperfect data
- Removing or reducing resistor:
 - Willingness to accept imperfect or incomplete data *
 - Willingness to help improve data (Helped Putnam County improve data by contributing \$46k)



*Critical point for NG911!!

Reducing Resistance

- Resistor: Sharing is too much effort
- Removing or reducing resistor:
 - We created a data streaming transfer process that was “hands-off” for counties after initial set-up

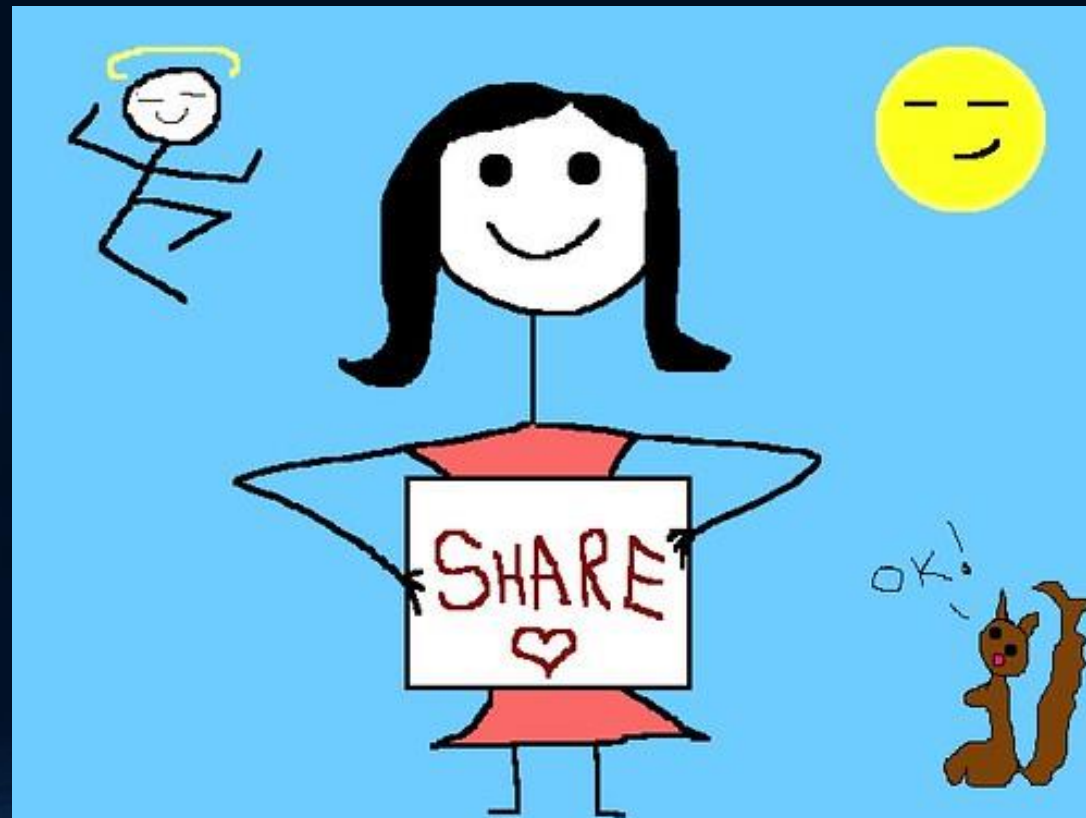


Encourage

- Communicate the importance and benefit of project often and in varied ways and venues
- Celebrate successes
- Make a friend before you need a friend
- Share ownership of change process and success
- “We can accomplish more together than we can independently”
- “We have more in common than we have differences”
- “There is no them...only us!”

Recognize that changing the paradigm
from "mine" to "ours" takes time.

Be patient!!



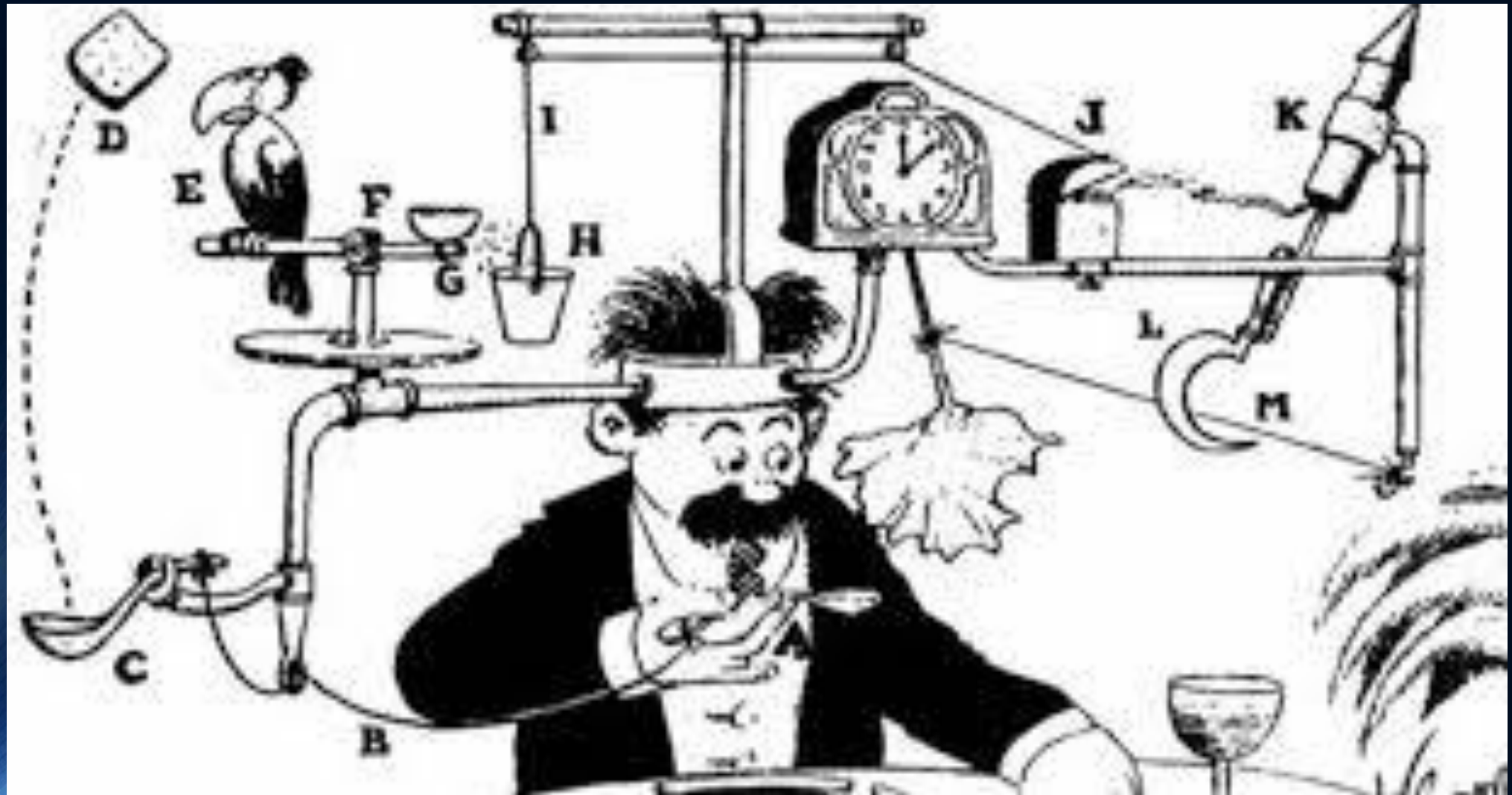
Indiana Data Sharing: Present and Future



Progress occurs when people work together toward the same goals



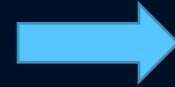
Just a little too complicated...



Slashtmp



FME Platform



esri



2018 Data Harvest

November 2018

- Request for data to the 92 counties

Dec 2018 to July 2019

- Start to receive the data
- Communicate with submitters
- Reason with service providers

Indiana Data Sharing Initiative

Link to State GIO Web Site for Data Sharing

Parcels

Address Points

Street Centerlines

Boundaries

The current Parcel map shows currently available county updates in blue. Red areas are currently not available for 2018, but earlier releases are available for those counties. [Click here for link to IndianaMap Parcels Page.](#)

The Parcels layer shows land parcels maintained by county agencies in Indiana, provided to personnel of Indiana Geographic Information Office (IGIO). These data were compiled by IGIO as part of the Indiana Data Sharing Initiative (IDSI) between Indiana Geographic Information Council (IGIC), Indiana Geographic Information Office (IGIO), Indiana Geological and Water Survey (IGWS) and participating Indiana counties to provide the most accurate framework data (including address points, street centerlines, land parcels, and governmental boundaries) for the citizens of Indiana. The attributes have been expanded to now include parcel ID, dates of harvest from each county, property classification codes, property classification descriptions, street address information, and tax district ID numbers.

May 2019



Indiana Data Sharing Initiative

Link to State GIO Web Site for Data Sharing

Parcels

Address Points

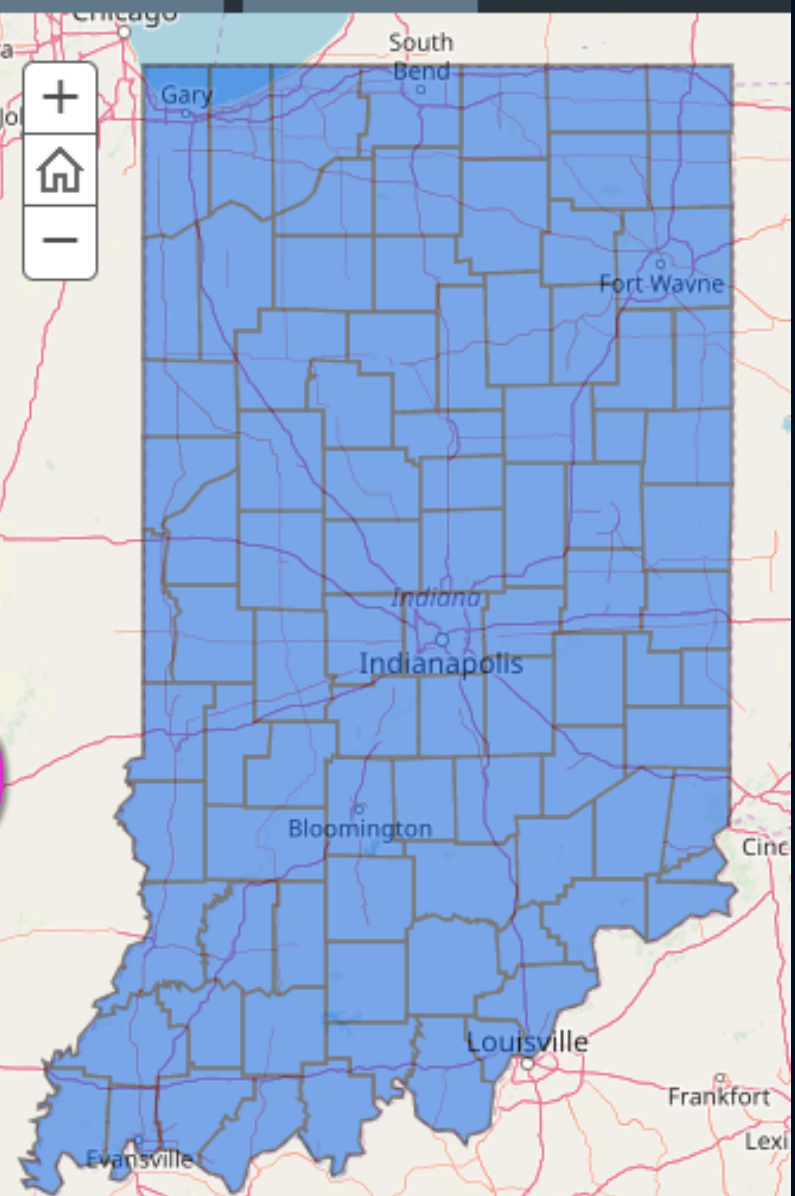
Street Centerlines

Boundaries

The current Parcel map shows currently available county updates in blue. Red areas are currently not available for 2018, but earlier releases are available for those counties. [Click here for link to IndianaMap Parcels Page.](#)

The Parcels layer shows land parcels maintained by county agencies in Indiana, provided to personnel of Indiana Geographic Information Office (IGIO). These data were compiled by IGIO as part of the Indiana Data Sharing Initiative (IDSI) between Indiana Geographic Information Council (IGIC), Indiana Geographic Information Office (IGIO), Indiana Geological and Water Survey (IGWS) and participating Indiana counties to provide the most accurate framework data (including address points, street centerlines, land parcels, and governmental boundaries) for the citizens of Indiana. The attributes have been expanded to now include parcel ID, dates of harvest from each county, property classification codes, property classification descriptions, street address information, and tax district ID numbers.

August 2019



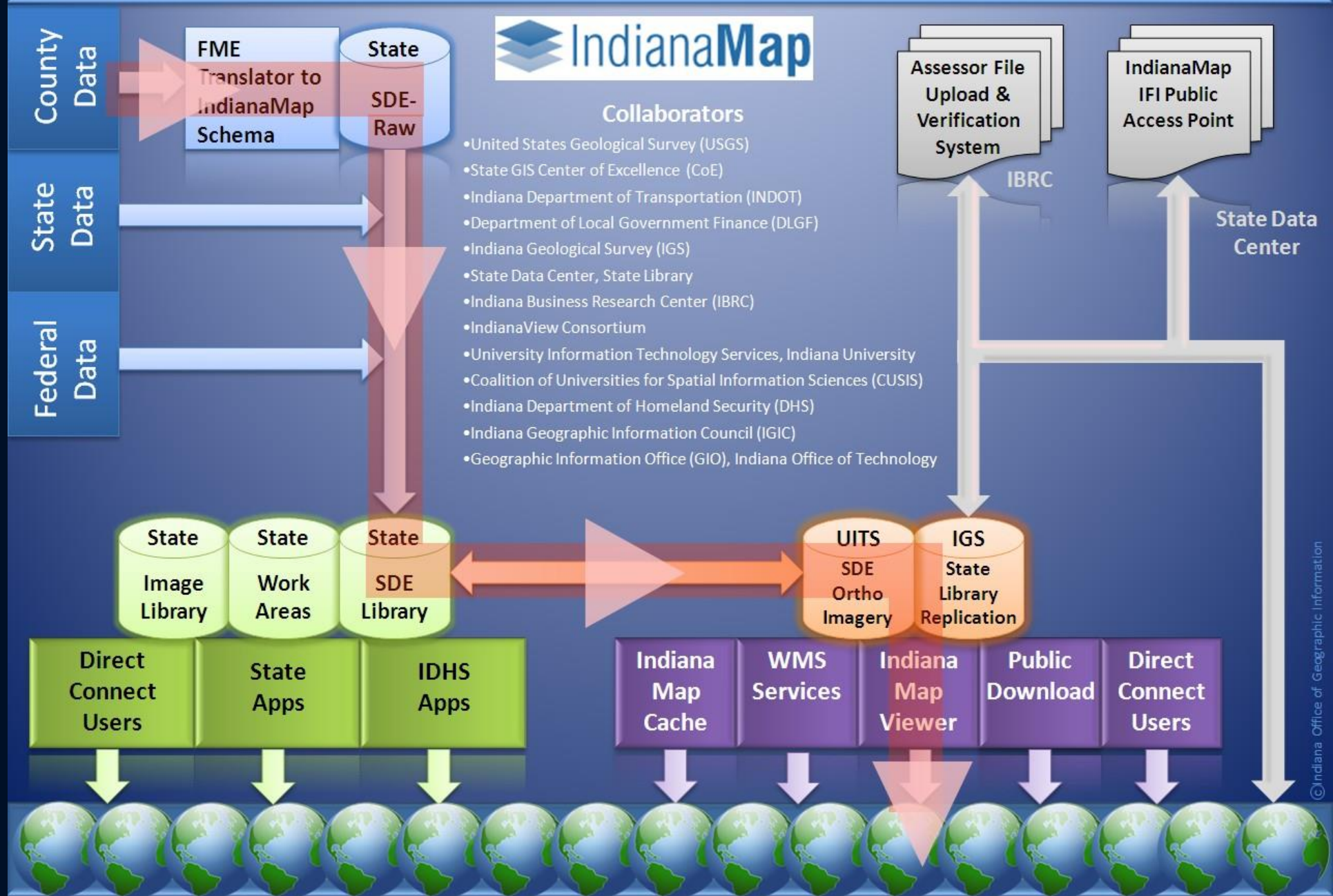
Dare To Dream!

Data Sharing Initiative Results

- **92 Counties have shared **UPDATED** GIS data**
- **599,436 Street Centerlines Segments**
- **2,952,065 Address Points**
- **3,158,230 Land Parcels**

Can be viewed or downloaded from IndianaMap.ORG

IndianaMap Integration & Distribution



Challenges remain

- Varying levels of quality with the data – Different abilities
 - Jurisdictional boundaries
- Business rules... what makes a centerline?
- Data sharing methods vary – data copy vs data streaming
- Vendors – The good and the complicated
- Data sharing agreements – expired but functioning
- Politics and new interests – be aware of those making policy



**Don't let the perfect be the
enemy of the good.**

-Voltaire

Future Harvest Goals

- Reduce the format for data submission
- Improve data cleaning processes
- Dedicated resources
- Consistent processes
- Stay on a schedule... or at least set one first



Program and Project drivers

**NEXT
GENERATION
9-1-1**



Daily Operations Support

Beyond the State Data

- National Parcel Map
- National Street Centerline Map
- National Point Address Map



THANK YOU

MEGAN COMPTON,
INDIANA GIO,
INDIANA OFFICE OF TECHNOLOGY
MCOMPTON@IOT.IN.GOV
GIO@IOT.IN.GOV

JIM SPARKS,
DIRECTOR OF GEOINFORMATICS,
THE POLIS CENTER AT
INDIANA UNIVERSITY
JISPARKS@IUPUI.EDU