

# Equity and Social Determinants of Health: Highlighting FSSA's Office of Healthy Opportunities and WISE Indiana Partnership

Medicaid Advisory Committee  
August 26, 2021

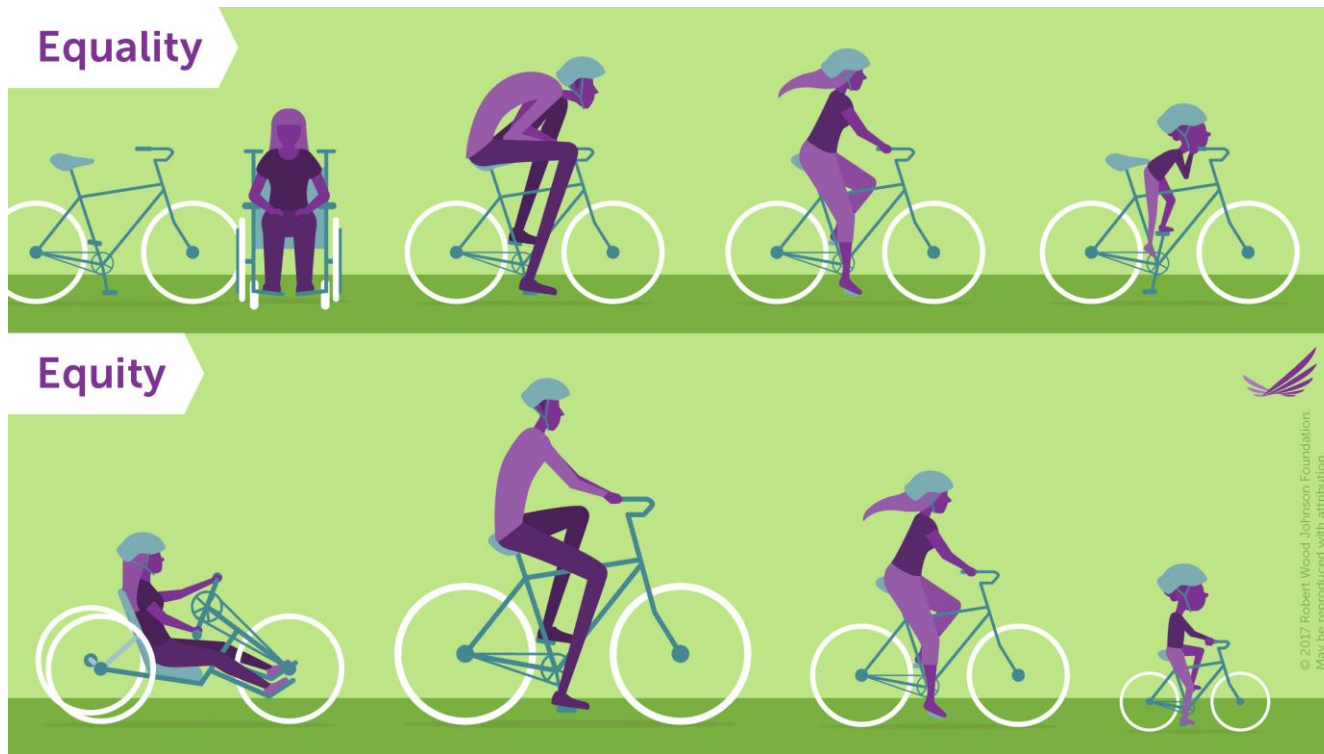


# About the Office of Healthy Opportunities

- Formed in 2018 to integrate social drivers of health, including racial and social equity, into FSSA programs, policies and services
- Led by chief health equity and Americans with Disabilities Act officer Breanca Merritt, Ph.D., and is comprised of a multidisciplinary team
- Charged with achieving health equity:
  - WHO defines health equity as “the absence of unfair and avoidable or remediable differences in health among population groups defined socially, economically, demographically or geographically”

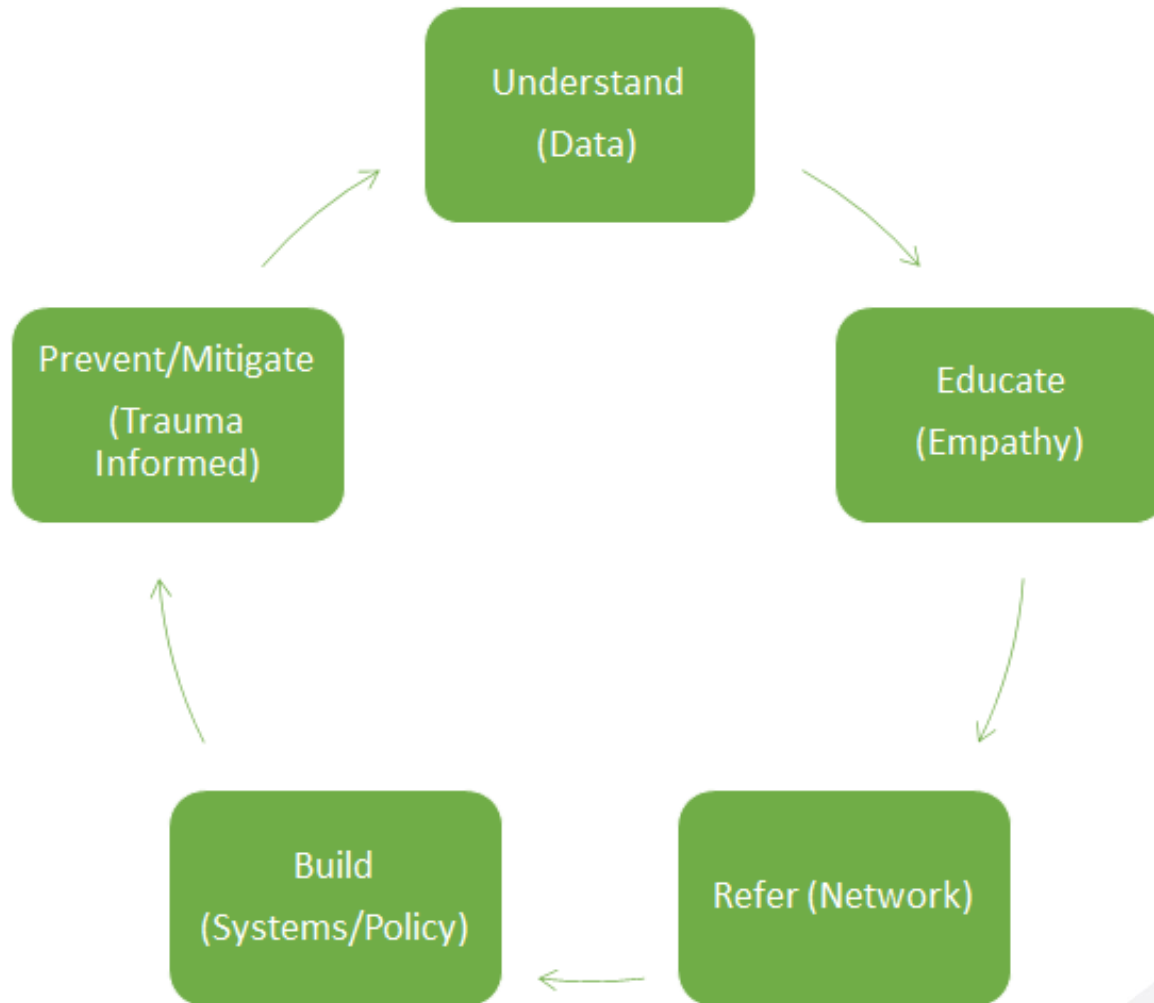


# Equality versus Equity



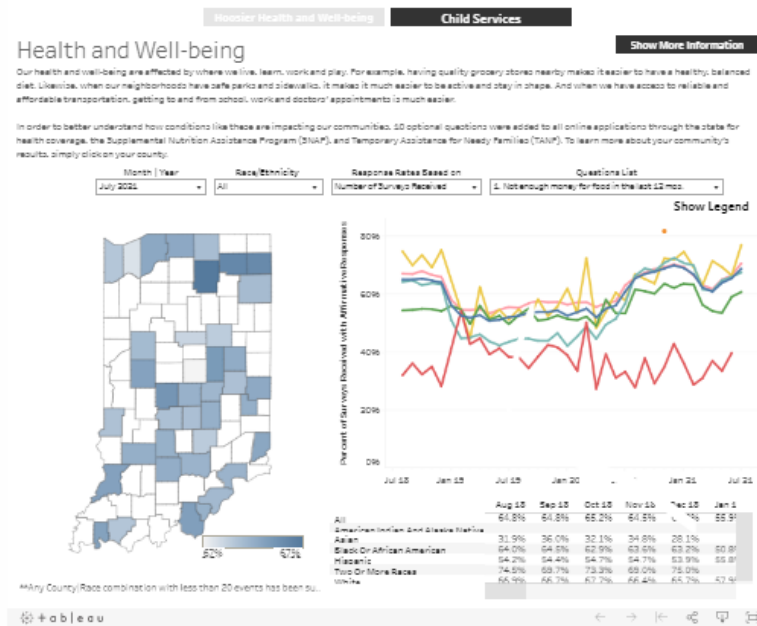
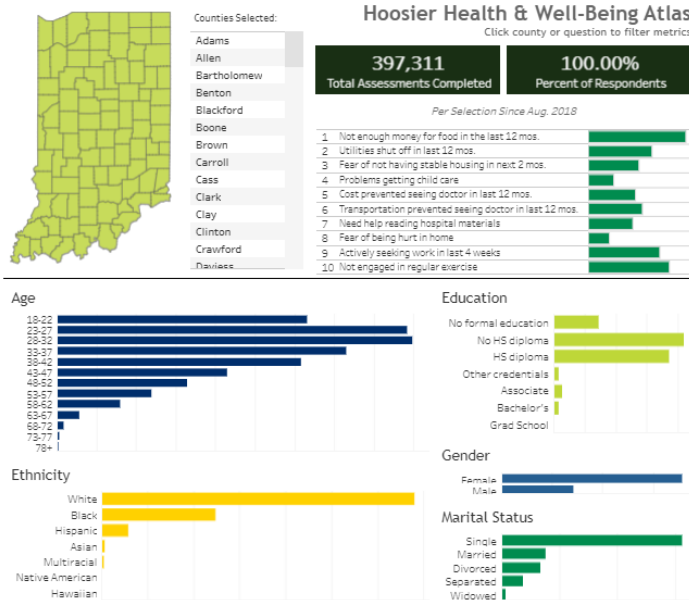
Source: Robert Wood Johnson Foundation

# Our Path



# Understand: Hoosier Health and Well-being Atlas

- Data featured on [FSSA website](#) and in state's [Equity Data Portal](#)



# Educate: Employee Awareness Campaign

- [Health is More than You Realize](#)



# Build: Operation Food

- Multiagency effort to address food insecurity as a result of COVID-19. Initiatives include:
  - National Guard Deployment
  - Food Assistance Availability Map
  - Food Security Alliance Taskforce
  - Pandemic EBT (Electronic Benefits Transfer)
  - SNAP Benefits Expansion and Online Purchasing



# Build: OHO Workgroups and Teams

- OHO team members support efforts for specific teams and workgroups
- Teams and workgroups consist of staff from each FSSA division and central business unit
  - Incorporating persons with disabilities and lived experience across the agency
- Monthly learning opportunities on equity topics
- Engagement of 100+ interested FSSA staff



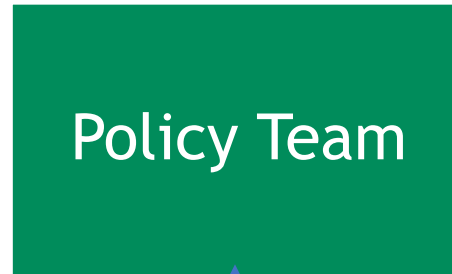


# OHO Workgroups and Teams

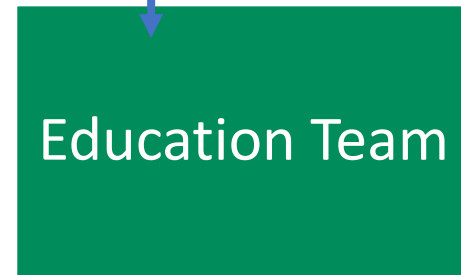


# Example of Collaborations and Overlap

Listening sessions identify key gaps in policy



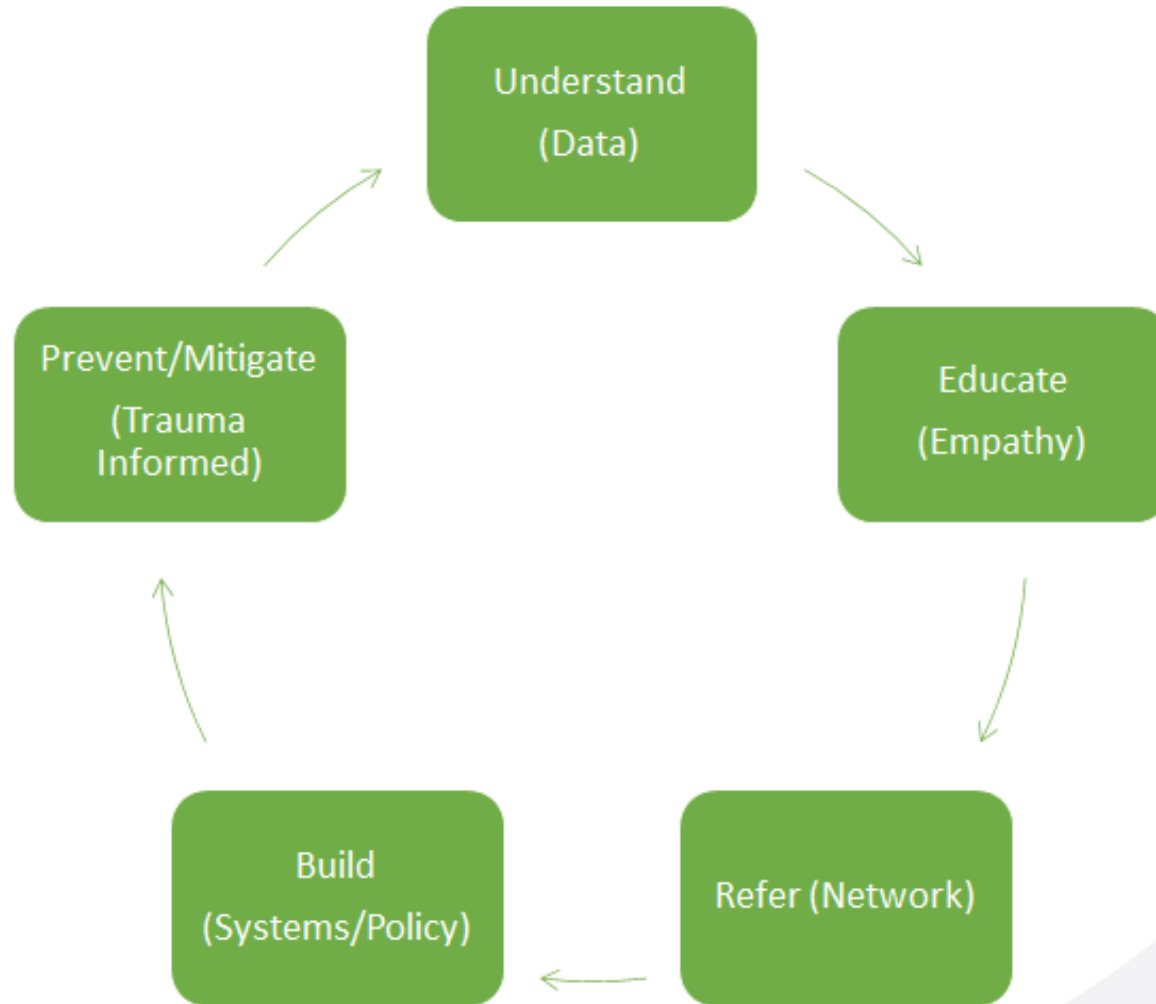
Work together to identify key populations to educate staff



Listening sessions inform agency-wide educational campaigns

Community feedback leads to creation of new equity outcomes for divisions

# Sometimes, external expertise can help!



# WISE Indiana

- A partnership between the Indiana Clinical and Translational Sciences Institute's (CTSI) Monon Collaborative and Indiana FSSA to engage Indiana's nationally-recognized academic experts to evaluate and inform Indiana practices, programs and policies.
- The partnership aligns with and furthers the visions of both organizations by facilitating timely, high-quality evidence-informed research, evaluation and analysis to the benefit of all Hoosiers.



Wellbeing Informed by  
Science and Evidence in Indiana



# Recent Equity-related WISE Task Orders

- Engaging evidence and expertise to inform Indiana's pandemic response.
  - [COVID-19 Daily Digest](#)
- Analysis of whether and how pandemic-related changes to SNAP have achieved the goal of increased food access in Indiana.
  - [Requesting FSSA data](#)



# What's Next for OHO?

- Identifying learning opportunities on equity and disability-related topics
- Resource repositories
- Refining agency policies and procedures
- Continuing to engage WISE for subject matter expertise and expert consultation in program evaluation, policy analysis, curriculum development, and other topics as needed



# Upcoming Presentation Featuring OHO

- Indiana Health Coverage Programs Live Seminar
  - Keynote and SDOH Presentation on Thursday, October 7



# Contact Information

Amy Gilbert, JD, MPH, Chief Science Officer

[Amy.Gilbert@fssa.in.gov](mailto:Amy.Gilbert@fssa.in.gov)

Megan Lisch, MPH, Special Projects Director

[Megan.Lisch@fssa.in.gov](mailto:Megan.Lisch@fssa.in.gov)

Office of Healthy Opportunities:  
[healthyopportunities@fssa.in.gov](mailto:healthyopportunities@fssa.in.gov)

WISE Indiana: [wisein@iu.edu](mailto:wisein@iu.edu)

