



# Division of Family Resources

## Statewide Monthly Management Report April 2026

### State of Indiana

Mike Braun  
Governor

### Family and Social Services Administration

Mitch Roob  
Secretary

### Division of Family Resources

Sunshine Beam  
Director

For questions regarding data on this report contact:  
[office.Communications@fssa.IN.gov](mailto:office.Communications@fssa.IN.gov)



## State of Indiana

Published May 2026

rc





# Division of Family Resources

## Monthly Report

Primary April

California

### TEMPORARY ASSISTANCE FOR NEEDY FAMILIES (TANF)

Indicator	April	March	April	Annual
Number of families receiving TANF Grants	4,451	4,605	4,717	-5.64%
Total number of grant recipients	10,595	11,059	10,774	-1.66%
Number of adult grant recipients	1,977	2,094	1,974	0.15%
Number of child grant recipients	8,618	8,965	8,800	-2.07%
Total payments	\$1,815,530	\$1,875,491	\$1,891,960	-4.04%
Average payment per case	\$407.89	\$407.27	\$401.09	1.70%
Average payment per recipient	\$171.36	\$169.59	\$175.60	-2.42%
Number of cases with benefits reduced to zero	115	112	112	2.68%
Number of recipients with benefits reduced to zero	215	213	205	4.88%
Number of adult recipients with benefit reduced to zero	25	25	33	-24.24%
Number of child recipients with benefit reduced to zero	190	188	172	10.47%

Indicator	April	March	April	Annual
Number of families receiving TANF Grants	89	103	105	-15.24%
Total number of grant recipients	88	103	105	-16.19%
Total payments	\$22,042.00	\$25,194.00	\$25,949.00	-15.06%
Average payment per case	\$247.66	\$244.60	\$247.13	0.21%
Average payment per recipient	\$250.48	\$244.60	\$247.13	1.35%
Number of cases with benefits reduced to zero	0	0	4	-100.00%
Number of recipients with benefits reduced to zero	0	0	4	-100.00%



# Division of Family Resources

## Monthly Comparison

Category	April	March	April	Annual
Number of families receiving TANF Grants	66	77	325	-79.69%
Total number of grant recipients	267	312	1,323	-79.82%
Number of adult grant recipients	117	139	639	-81.69%
Number of child grant recipients	150	173	684	-78.07%
Total payments	\$35,733	\$42,967	\$190,243	-81.22%
Average payment per case	\$541.41	\$558.01	\$585.36	-7.51%
Average payment per recipient	\$133.83	\$137.71	\$143.80	-6.93%
Number of cases with benefits reduced to zero	3	2	1	200.00%
Number of recipients with benefits reduced to zero	13	10	3	333.33%
Number of adult recipients with benefit reduced to zero	6	4	2	200.00%
Number of child recipients with benefit reduced to zero	7	6	1	600.00%

Note: The two-parent case count includes cases in which a parent living in the home is excluded from receiving TANF benefits but whose income is used in the TANF eligibility determination.



# Division of Family Resources

**M h l M a a p r**

**p r i M h April c a i a i**

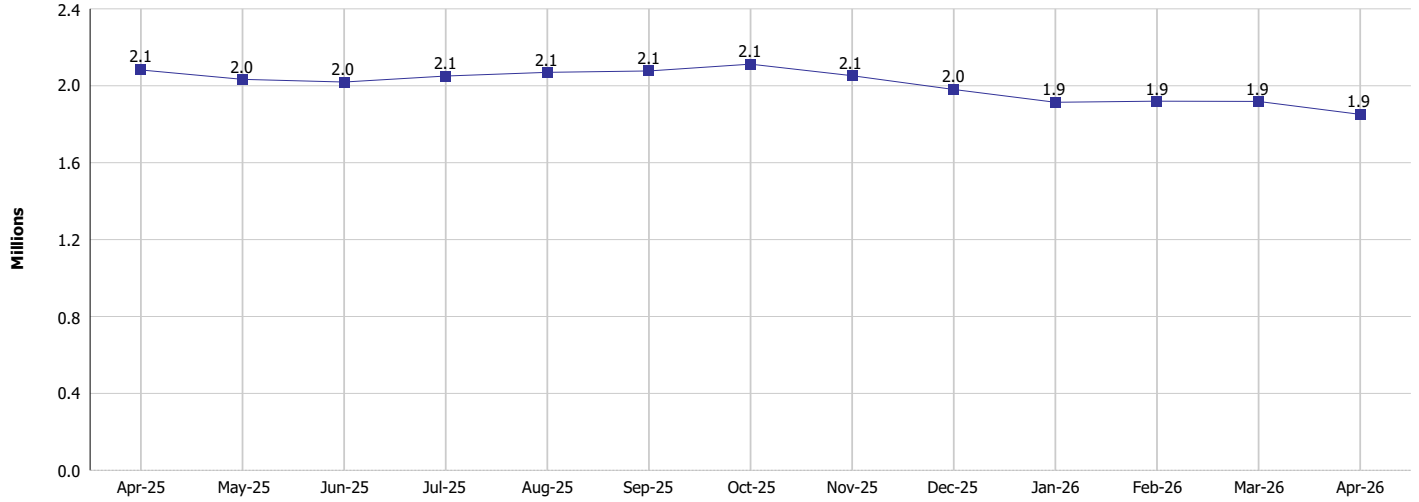
## TANF - APPLICATIONS

	April 2026	March 2026	April 2025	Annual Change
<b>Number of Applications</b>	5,238	4,777	5,877	-10.87%

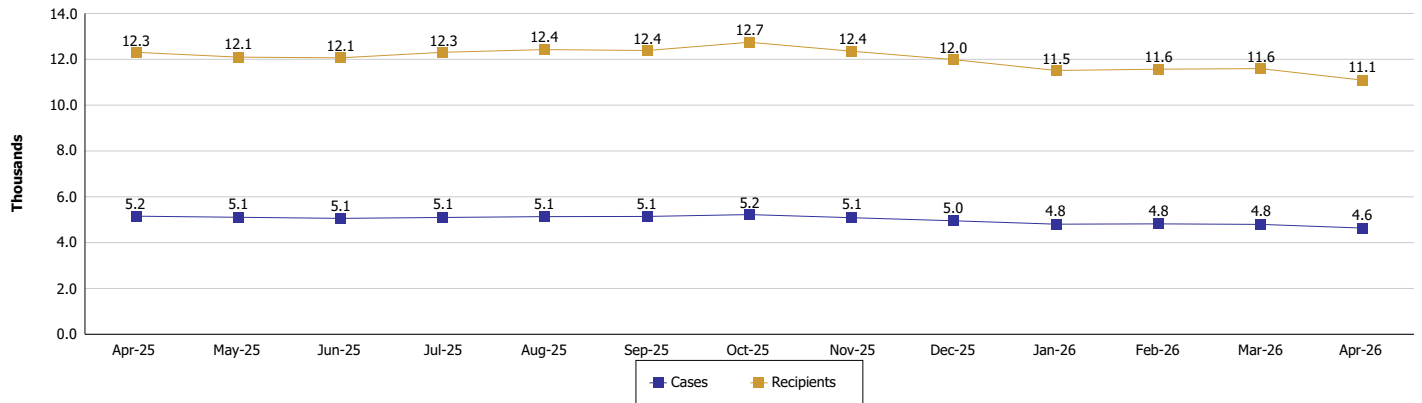


TEMPORARY ASSISTANCE FOR NEEDY FAMILIES (TANF)

TANF Cash Assistance (TANF Regular and TANF Two-Parent)



TANF Cases and Recipients (TANF Regular and TANF Two-Parent)





**M h l M a a p r**

**p r i M h April**

**ca i a i**

**SUPPLEMENTAL NUTRITION ASSISTANCE PROGRAM (SNAP)**

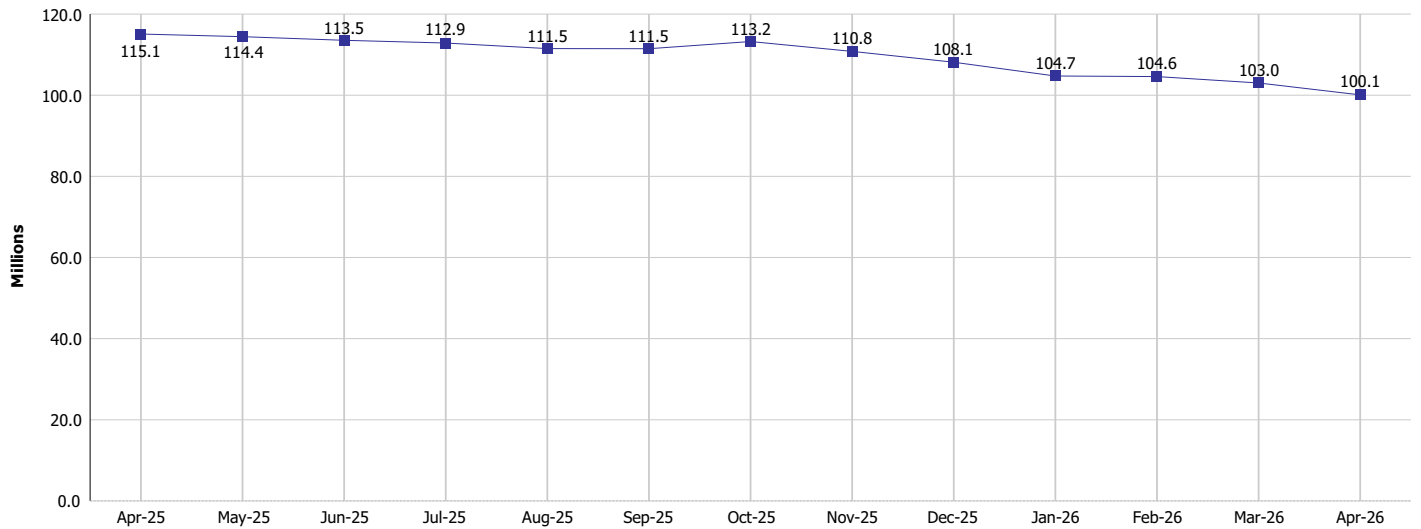
	<b>April</b>	<b>March</b>	<b>April</b>	<b>A al ha</b>
Total issuance	\$100,089,548	\$103,020,947	\$115,077,807	-13.02%
Number of households receiving SNAP benefits	249,367	254,762	281,112	-11.29%
Number of recipients	508,166	521,331	588,184	-13.60%
Average issuance per household	\$401.37	\$404.38	\$409.37	-1.95%
Average issuance per recipient	\$196.96	\$197.61	\$195.65	0.67%
Number of Applications	33,399	31,737	36,506	-8.51%



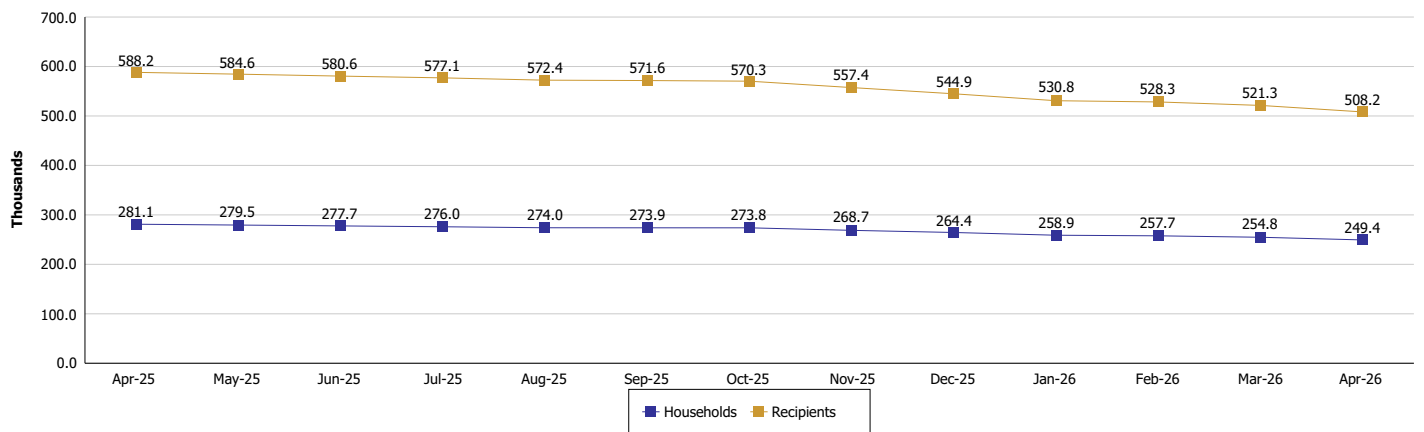
p r i M h April c a i a i

SUPPLEMENTAL NUTRITION ASSISTANCE PROGRAM (SNAP)

SNAP Issuance



SNAP Households and Recipients





# Division of Family Resources

Monthly Report

Month: April      Category:

## HIP 2.0 and SNAP

	April	March	April	Annual
Total HIP 2.0 Members	545,847	562,086	743,140	-26.55%
HIP Members also SNAP Recipients	143,786	148,430	176,885	-18.71%
Percentage HIP Members SNAP Recipients	26.3%	26.4%	23.8%	2.54
HIP Members SNAP ABAWDs	16,000	16,312	4,789	234.10%
Percentage HIP Members SNAP ABAWDs	2.9%	2.9%	0.6%	2.3



# Division of Family Resources

Monthly Report

Primary Month April

Calendar Year

## INDIANA MANPOWER PLACEMENT AND COMPREHENSIVE TRAINING (IMPACT)

	April	March	April	Annual
Number of IMPACT cases	760	705	651	16.74%
Number of TANF IMPACT adults	244	214	240	1.67%
Number of SNAP IMPACT Cases	516	491	411	25.55%
Total number of adults employed	1,586	1,747	1,710	-7.25%
Number of TANF IMPACT adults newly employed (within past 30 days)	65	58	65	0.00%
Number of SNAP IMPACT adults employed	1,521	1,689	1,645	-7.54%
Total number of adults ineligible due to employment	1,681	1,226	1,928	-12.81%
Number of TANF adults ineligible due to employment	35	31	86	-59.30%
Number of SNAP adults ineligible due to employment	1,646	1,195	1,842	-10.64%

