



## DIVISION OF FAMILY RESOURCES

# White County Monthly Management Report March 2026

### State of Indiana

Mike Braun  
Governor

### Family and Social Services Administration

Mitch Roob  
Secretary

### Division of Family Resources

Sunshine Beam  
Director

For questions regarding data on this report contact:  
[office.Communications@fssa.IN.gov](mailto:office.Communications@fssa.IN.gov)



## State of Indiana

Published April 2026



## DIVISION OF FAMILY RESOURCES

### Monthly Management Report

Reporting Month: March 2026

Location: White County

#### TEMPORARY ASSISTANCE FOR NEEDY FAMILIES (TANF)

Child-Only and One-Parent Families	March 2026	February 2026	March 2025	Annual Change
Number of families receiving TANF Grants	9	8	11	-18.18%
Total number of grant recipients	26	23	27	-3.70%
Number of adult grant recipients	3	2	2	50.00%
Number of child grant recipients	23	21	25	-8.00%
Total payments	\$4,423	\$3,910	\$5,066	-12.69%
Average payment per case	\$491.44	\$488.75	\$460.55	6.71%
Average payment per recipient	\$170.12	\$170.00	\$187.63	-9.33%
Number of cases with benefits reduced to zero	1	1	1	0.00%
Number of recipients with benefits reduced to zero	1	1	1	0.00%
Number of adult recipients with benefit reduced to zero	0	0	0	0%
Number of child recipients with benefit reduced to zero	1	1	1	0.00%

Pregnancy TANF Families	March 2026	February 2026	March 2025	Annual Change
Number of families receiving TANF Grants	0	0	0	0%
Total number of grant recipients	0	0	0	0%
Total payments	\$0.00	\$0.00	\$0.00	0%
Average payment per case	\$0.00	\$0.00	\$0.00	0.00%
Average payment per recipient	\$0.00	\$0.00	\$0.00	0.00%
Number of cases with benefits reduced to zero	0	0	0	0%
Number of recipients with benefits reduced to zero	0	0	0	0%



## DIVISION OF FAMILY RESOURCES

### Monthly Management Report

Two-Parent Families	March 2026	February 2026	March 2025	Annual Change
Number of families receiving TANF Grants	0	0	0	0%
Total number of grant recipients	0	0	0	0%
Number of adult grant recipients	0	0	0	0%
Number of child grant recipients	0	0	0	0%
Total payments	\$0	\$0	\$0	0%
Average payment per case	\$0.00	\$0.00	\$0.00	0.00%
Average payment per recipient	\$0.00	\$0.00	\$0.00	0.00%
Number of cases with benefits reduced to zero	0	0	0	0%
Number of recipients with benefits reduced to zero	0	0	0	0%
Number of adult recipients with benefit reduced to zero	0	0	0	0%
Number of child recipients with benefit reduced to zero	0	0	0	0%

Note: The two-parent case count includes cases in which a parent living in the home is excluded from receiving TANF benefits but whose income is used in the TANF eligibility determination.



## DIVISION OF FAMILY RESOURCES

### Monthly Management Report

Reporting Month: March 2026

Location: White County

#### TANF - APPLICATIONS

	March 2026	February 2026	March 2025	Annual Change
<b>Number of Applications</b>	9	5	8	12.50%

#### TANF - RECIPIENTS BY ZIP CODE

ZIP Code	Households	Recipients
47923	1	2
47925	1	2
47929	1	2
47959	2	10
47960	4	10
<b>Total</b>	<b>9</b>	<b>26</b>



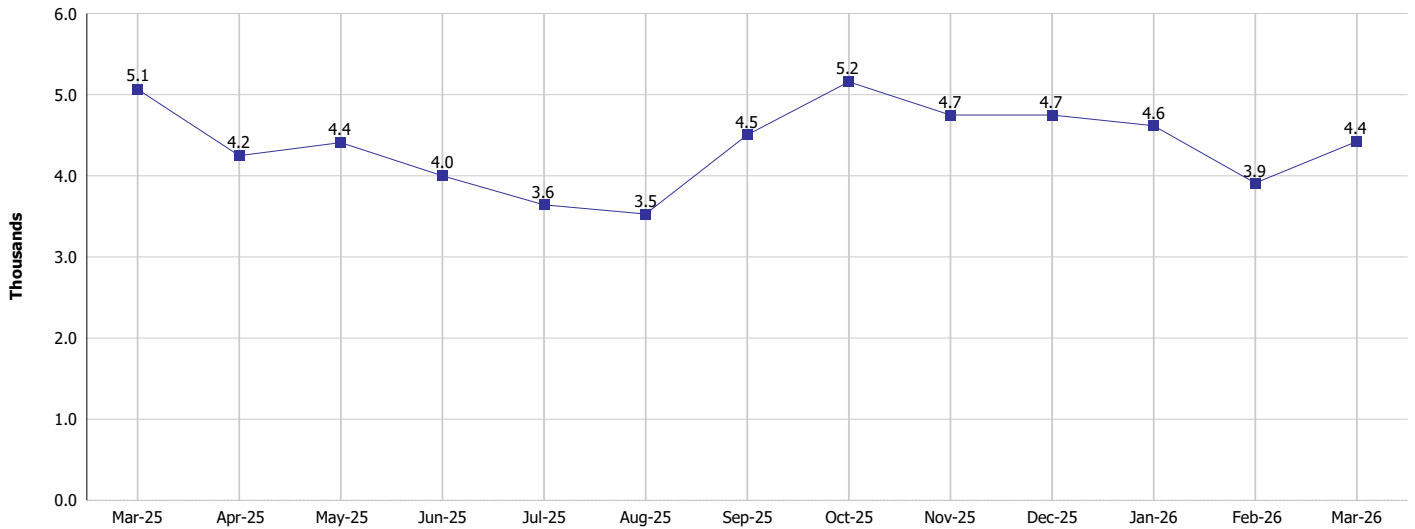
# DIVISION OF FAMILY RESOURCES

## Monthly Management Report

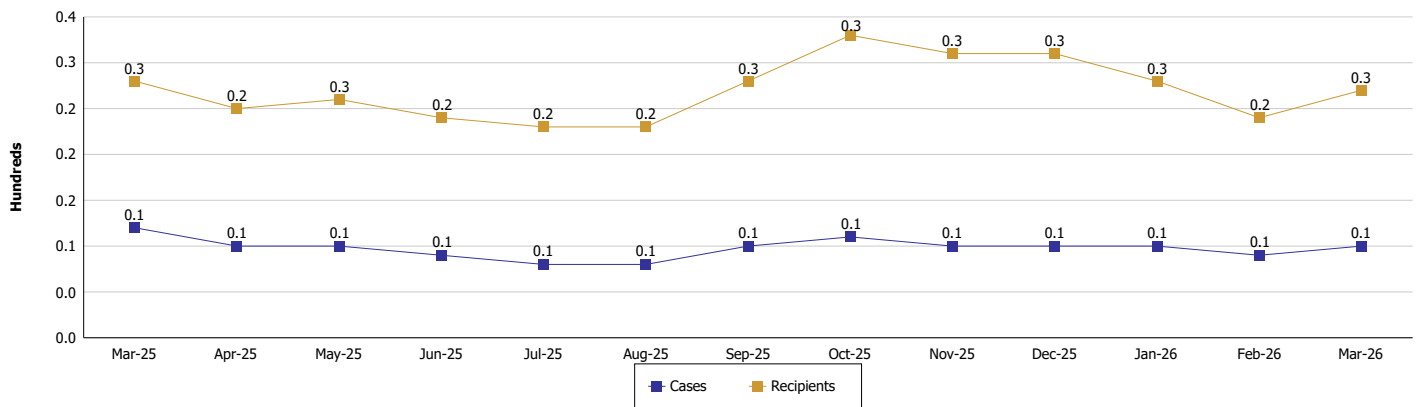
Reporting Month: March 2026 Location: White County

### TEMPORARY ASSISTANCE FOR NEEDY FAMILIES (TANF)

TANF Regular And TANF Two-Parent Cash Assistance



TANF Cases and Recipients  
(TANF Regular and TANF Two-Parent)





**DIVISION OF FAMILY RESOURCES**

**Monthly Management Report**

Reporting Month: March 2026

Location: White County

**SUPPLEMENTAL NUTRITION ASSISTANCE PROGRAM (SNAP)**

	March 2026	February 2026	March 2025	Annual Change
Total issuance	\$238,807	\$246,898	\$275,419	-13.29%
Number of households receiving SNAP benefits	612	626	680	-10%
Number of recipients	1,290	1,308	1,461	-11.7%
Average issuance per household	\$390.21	\$394.41	\$405.03	-3.66%
Average issuance per recipient	\$185.12	\$188.76	\$188.51	-1.8%
Number of Applications	63	59	65	-3.08%



## DIVISION OF FAMILY RESOURCES

### Monthly Management Report

Reporting Month: March 2026 Location: White County

#### SNAP - RECIPIENTS BY ZIP CODE

ZIP Code	Households	Recipients
46985	3	11
47920	2	7
47923	44	94
47925	11	16
47926	21	52
47929	13	35
47950	17	47
47959	74	173
47960	376	733
47978	2	4
47980	20	45
47995	29	73
<b>Totals</b>	<b>612</b>	<b>1,290</b>



# DIVISION OF FAMILY RESOURCES

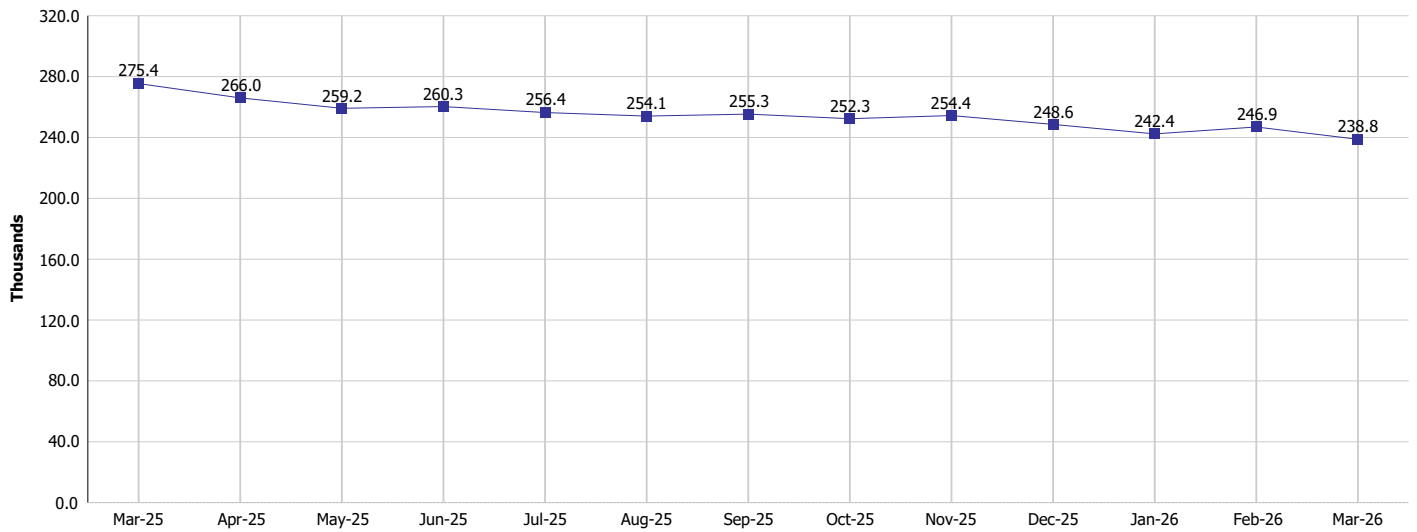
## Monthly Management Report

Reporting Month: March 2026

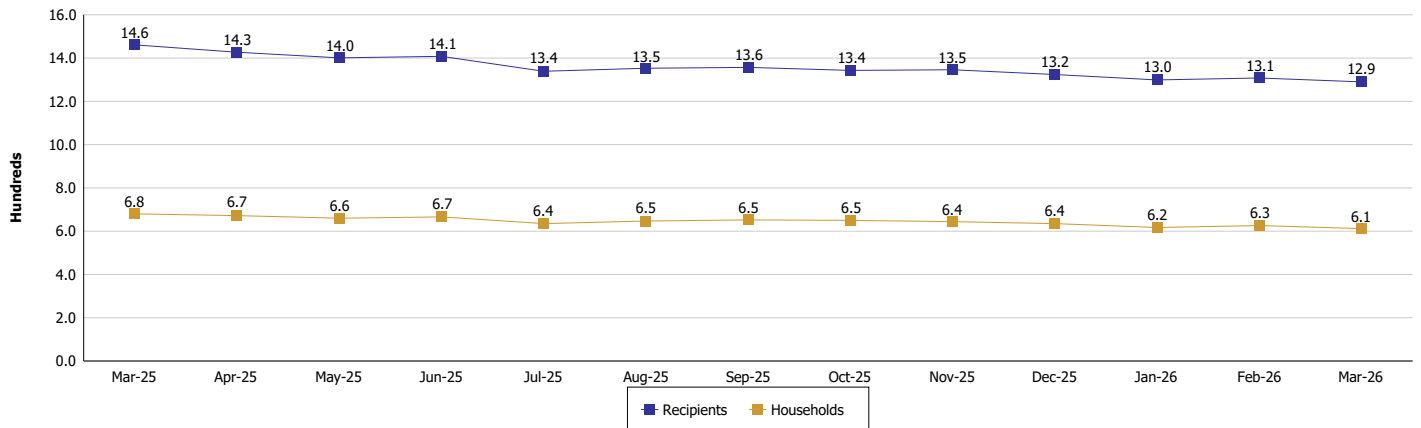
Location: White County

### SUPPLEMENTAL NUTRITION ASSISTANCE PROGRAM (SNAP)

SNAP Issuance



SNAP Households and Recipients





## DIVISION OF FAMILY RESOURCES

### Monthly Management Report

Reporting Month: March 2026

Location: White County

#### HIP 2.0 and SNAP

	March 2026	February 2026	March 2025	Annual Change
Total HIP 2.0 Members	1,731	1,755	2,310	-25.06%
HIP Members also SNAP Recipients	353	355	405	-12.84%
Percentage HIP Members SNAP Recipients	20.4%	20.2%	17.5%	2.86
HIP Members SNAP ABAWDs	31	30	9	244.44%
Percentage HIP Members SNAP ABAWDs	1.8%	1.7%	0.4%	1.4



**DIVISION OF FAMILY RESOURCES**

**Monthly Management Report**

Reporting Month: March 2026

Location: White County

**INDIANA MANPOWER PLACEMENT AND COMPREHENSIVE TRAINING (IMPACT)**

	March 2026	February 2026	March 2025	Annual Change
Number of IMPACT cases	1	1	0	
Number of TANF IMPACT adults	0	0	0	
Number of SNAP IMPACT Cases	1	1	0	
Total number of adults employed	5	3	3	66.67%
Number of TANF IMPACT adults newly employed (within past 30 days)	0	0	0	
Number of SNAP IMPACT adults employed	5	3	3	66.67%
Total number of adults ineligible due to employment	2	1	3	-33.33%
Number of TANF adults ineligible due to employment	0	0	0	
Number of SNAP adults ineligible due to employment	2	1	3	-33.33%

**IMPACT Caseloads**  
(SNAP, TANF, Total Caseload)

