



## DIVISION OF FAMILY RESOURCES

# Sullivan County Monthly Management Report March 2026

### State of Indiana

Mike Braun  
Governor

### Family and Social Services Administration

Mitch Roob  
Secretary

### Division of Family Resources

Sunshine Beam  
Director

For questions regarding data on this report contact:  
[office.Communications@fssa.IN.gov](mailto:office.Communications@fssa.IN.gov)



## State of Indiana

Published April 2026



## DIVISION OF FAMILY RESOURCES

### Monthly Management Report

Reporting Month: March 2026

Location: Sullivan County

#### TEMPORARY ASSISTANCE FOR NEEDY FAMILIES (TANF)

Child-Only and One-Parent Families	March 2026	February 2026	March 2025	Annual Change
Number of families receiving TANF Grants	6	5	12	-50.00%
Total number of grant recipients	15	13	20	-25.00%
Number of adult grant recipients	3	2	6	-50.00%
Number of child grant recipients	12	11	14	-14.29%
Total payments	\$2,435	\$1,886	\$3,813	-36.14%
Average payment per case	\$405.83	\$377.20	\$317.75	27.72%
Average payment per recipient	\$162.33	\$145.08	\$190.65	-14.85%
Number of cases with benefits reduced to zero	0	0	0	0%
Number of recipients with benefits reduced to zero	0	0	0	0%
Number of adult recipients with benefit reduced to zero	0	0	0	0%
Number of child recipients with benefit reduced to zero	0	0	0	0%

Pregnancy TANF Families	March 2026	February 2026	March 2025	Annual Change
Number of families receiving TANF Grants	0	0	1	-100.00%
Total number of grant recipients	0	0	1	-100.00%
Total payments	\$0.00	\$0.00	\$248.00	-100.00%
Average payment per case	\$0.00	\$0.00	\$248.00	-100.00%
Average payment per recipient	\$0.00	\$0.00	\$248.00	-100.00%
Number of cases with benefits reduced to zero	0	0	0	0%
Number of recipients with benefits reduced to zero	0	0	0	0%



## DIVISION OF FAMILY RESOURCES

### Monthly Management Report

Two-Parent Families	March 2026	February 2026	March 2025	Annual Change
Number of families receiving TANF Grants	0	0	0	0%
Total number of grant recipients	0	0	0	0%
Number of adult grant recipients	0	0	0	0%
Number of child grant recipients	0	0	0	0%
Total payments	\$0	\$0	\$0	0%
Average payment per case	\$0.00	\$0.00	\$0.00	0.00%
Average payment per recipient	\$0.00	\$0.00	\$0.00	0.00%
Number of cases with benefits reduced to zero	0	0	0	0%
Number of recipients with benefits reduced to zero	0	0	0	0%
Number of adult recipients with benefit reduced to zero	0	0	0	0%
Number of child recipients with benefit reduced to zero	0	0	0	0%

Note: The two-parent case count includes cases in which a parent living in the home is excluded from receiving TANF benefits but whose income is used in the TANF eligibility determination.



## DIVISION OF FAMILY RESOURCES

### Monthly Management Report

Reporting Month: March 2026

Location: Sullivan County

#### TANF - APPLICATIONS

	March 2026	February 2026	March 2025	Annual Change
<b>Number of Applications</b>	8	9	12	-33.33%

#### TANF - RECIPIENTS BY ZIP CODE

ZIP Code	Households	Recipients
47838	1	3
47879	1	4
47882	4	8
<b>Total</b>	<b>6</b>	<b>15</b>



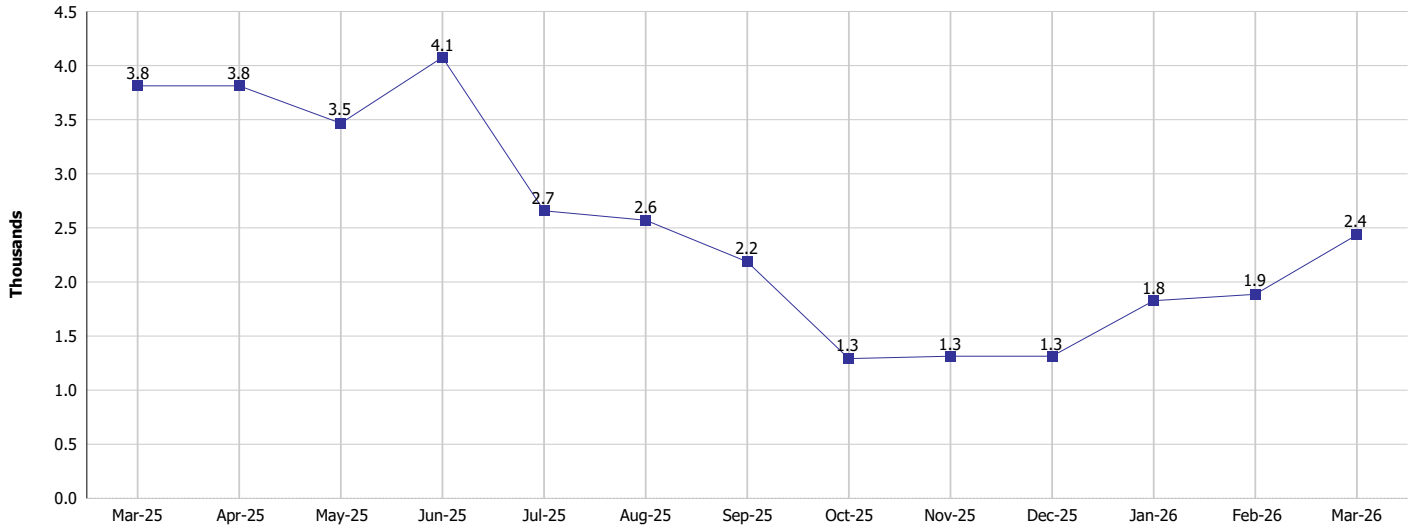
# DIVISION OF FAMILY RESOURCES

## Monthly Management Report

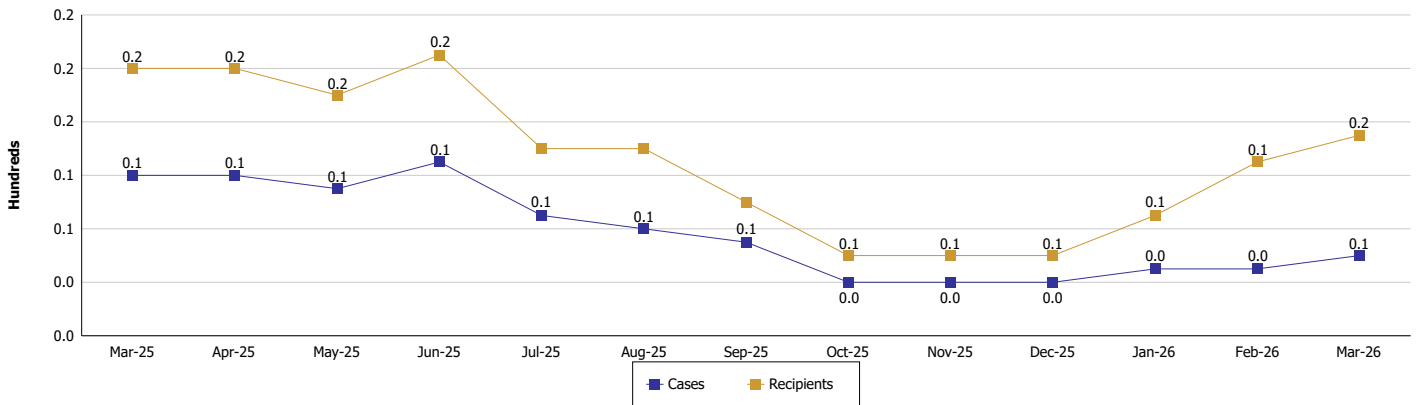
Reporting Month: March 2026 Location: Sullivan County

### TEMPORARY ASSISTANCE FOR NEEDY FAMILIES (TANF)

TANF Regular And TANF Two-Parent Cash Assistance



TANF Cases and Recipients  
(TANF Regular and TANF Two-Parent)





**DIVISION OF FAMILY RESOURCES**

**Monthly Management Report**

Reporting Month: March 2026

Location: Sullivan County

**SUPPLEMENTAL NUTRITION ASSISTANCE PROGRAM (SNAP)**

	March 2026	February 2026	March 2025	Annual Change
Total issuance	\$301,668	\$307,232	\$342,720	-11.98%
Number of households receiving SNAP benefits	880	898	959	-8.24%
Number of recipients	1,743	1,763	2,022	-13.8%
Average issuance per household	\$342.8	\$342.13	\$357.37	-4.08%
Average issuance per recipient	\$173.07	\$174.27	\$169.5	2.11%
Number of Applications	84	92	100	-16%



## DIVISION OF FAMILY RESOURCES

### Monthly Management Report

Reporting Month: March 2026 Location: Sullivan County

#### SNAP - RECIPIENTS BY ZIP CODE

ZIP Code	Households	Recipients
46936	1	3
47170	1	1
47438	8	12
47441	1	1
47807	1	5
47837	1	1
47838	82	179
47848	54	100
47849	6	20
47850	86	165
47855	44	92
47858	4	6
47861	20	45
47866	1	1
47879	133	270
47882	436	841
None	1	1
<b>Totals</b>	<b>880</b>	<b>1,743</b>



## DIVISION OF FAMILY RESOURCES

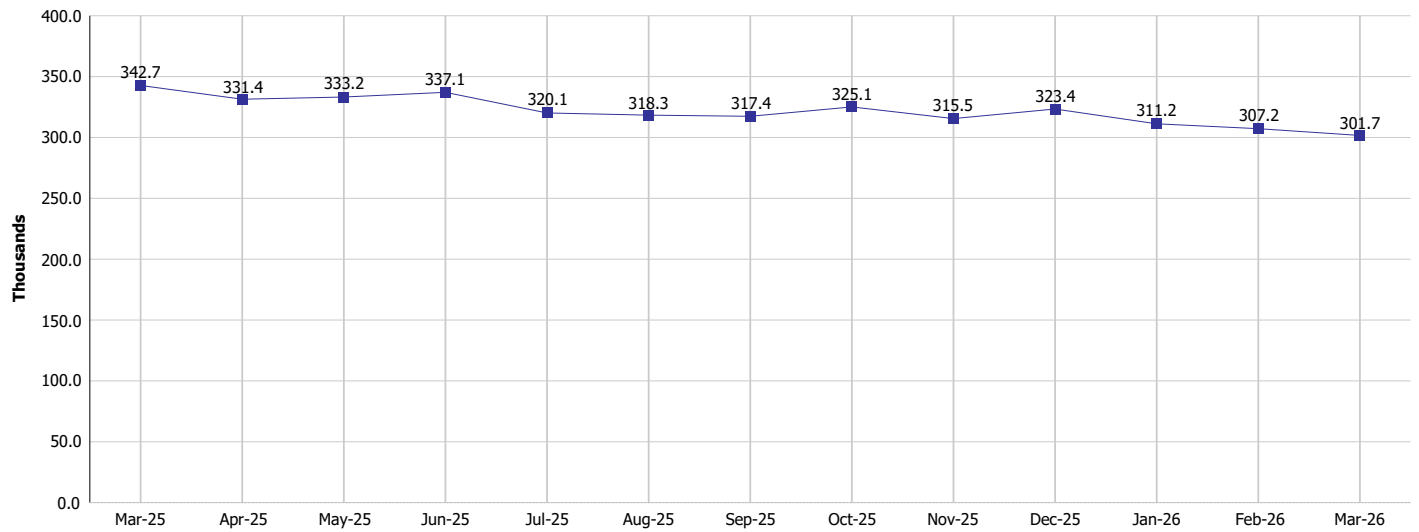
### Monthly Management Report

Reporting Month: March 2026

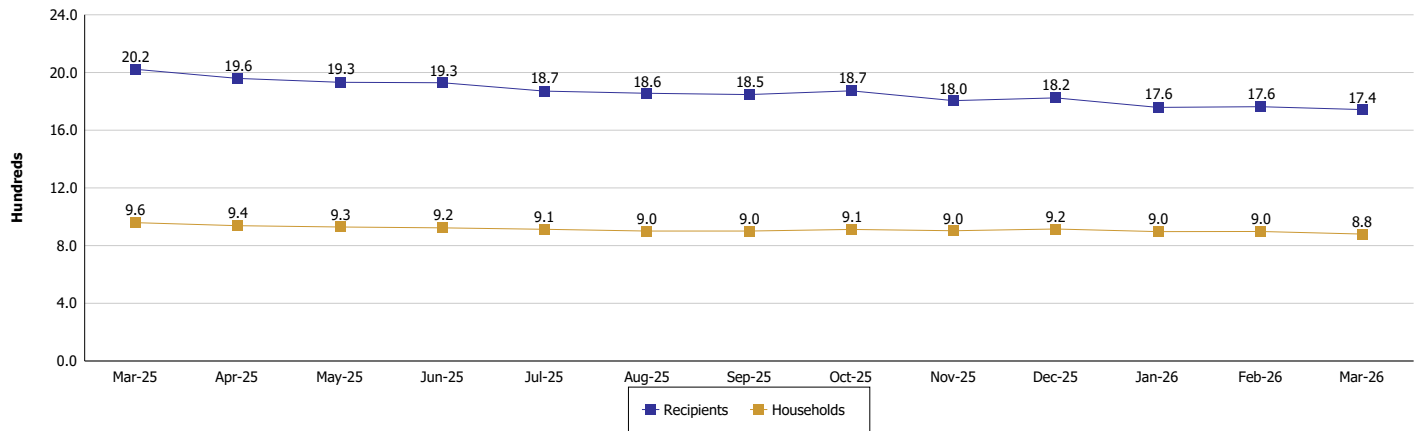
Location: Sullivan County

#### SUPPLEMENTAL NUTRITION ASSISTANCE PROGRAM (SNAP)

SNAP Issuance



SNAP Households and Recipients





## DIVISION OF FAMILY RESOURCES

### Monthly Management Report

Reporting Month: March 2026

Location: Sullivan County

#### HIP 2.0 and SNAP

	March 2026	February 2026	March 2025	Annual Change
Total HIP 2.0 Members	1,743	1,773	2,227	-21.73%
HIP Members also SNAP Recipients	528	545	653	-19.14%
Percentage HIP Members SNAP Recipients	30.3%	30.7%	29.3%	0.97
HIP Members SNAP ABAWDs	65	69	22	195.45%
Percentage HIP Members SNAP ABAWDs	3.7%	3.9%	1.0%	2.7



**DIVISION OF FAMILY RESOURCES**

**Monthly Management Report**

Reporting Month: March 2026

Location: Sullivan County

**INDIANA MANPOWER PLACEMENT AND COMPREHENSIVE TRAINING (IMPACT)**

	March 2026	February 2026	March 2025	Annual Change
Number of IMPACT cases	2	1	6	-66.67%
Number of TANF IMPACT adults	0	1	3	-100.00%
Number of SNAP IMPACT Cases	2	0	3	-33.33%
Total number of adults employed	10	5	8	25.00%
Number of TANF IMPACT adults newly employed (within past 30 days)	0	0	1	-100.00%
Number of SNAP IMPACT adults employed	10	5	7	42.86%
Total number of adults ineligible due to employment	4	2	0	
Number of TANF adults ineligible due to employment	0	0	0	
Number of SNAP adults ineligible due to employment	4	2	0	

**IMPACT Caseloads**  
(SNAP, TANF, Total Caseload)

