



## DIVISION OF FAMILY RESOURCES

# Spencer County Monthly Management Report March 2026

### State of Indiana

Mike Braun  
Governor

### Family and Social Services Administration

Mitch Roob  
Secretary

### Division of Family Resources

Sunshine Beam  
Director

For questions regarding data on this report contact:  
[office.Communications@fssa.IN.gov](mailto:office.Communications@fssa.IN.gov)



## State of Indiana

Published April 2026



## DIVISION OF FAMILY RESOURCES

### Monthly Management Report

Reporting Month: March 2026

Location: Spencer County

#### TEMPORARY ASSISTANCE FOR NEEDY FAMILIES (TANF)

Child-Only and One-Parent Families	March 2026	February 2026	March 2025	Annual Change
Number of families receiving TANF Grants	4	4	5	-20.00%
Total number of grant recipients	6	6	6	0.00%
Number of adult grant recipients	1	1	0	0%
Number of child grant recipients	5	5	6	-16.67%
Total payments	\$1,250	\$1,250	\$1,401	-10.78%
Average payment per case	\$312.50	\$312.50	\$280.20	11.53%
Average payment per recipient	\$208.33	\$208.33	\$233.50	-10.78%
Number of cases with benefits reduced to zero	0	0	0	0%
Number of recipients with benefits reduced to zero	0	0	0	0%
Number of adult recipients with benefit reduced to zero	0	0	0	0%
Number of child recipients with benefit reduced to zero	0	0	0	0%

Pregnancy TANF Families	March 2026	February 2026	March 2025	Annual Change
Number of families receiving TANF Grants	0	0	0	0%
Total number of grant recipients	0	0	0	0%
Total payments	\$0.00	\$0.00	\$0.00	0%
Average payment per case	\$0.00	\$0.00	\$0.00	0.00%
Average payment per recipient	\$0.00	\$0.00	\$0.00	0.00%
Number of cases with benefits reduced to zero	0	0	0	0%
Number of recipients with benefits reduced to zero	0	0	0	0%



## DIVISION OF FAMILY RESOURCES

### Monthly Management Report

Two-Parent Families	March 2026	February 2026	March 2025	Annual Change
Number of families receiving TANF Grants	0	0	0	0%
Total number of grant recipients	0	0	0	0%
Number of adult grant recipients	0	0	0	0%
Number of child grant recipients	0	0	0	0%
Total payments	\$0	\$0	\$0	0%
Average payment per case	\$0.00	\$0.00	\$0.00	0.00%
Average payment per recipient	\$0.00	\$0.00	\$0.00	0.00%
Number of cases with benefits reduced to zero	0	0	0	0%
Number of recipients with benefits reduced to zero	0	0	0	0%
Number of adult recipients with benefit reduced to zero	0	0	0	0%
Number of child recipients with benefit reduced to zero	0	0	0	0%

Note: The two-parent case count includes cases in which a parent living in the home is excluded from receiving TANF benefits but whose income is used in the TANF eligibility determination.



## DIVISION OF FAMILY RESOURCES

### Monthly Management Report

Reporting Month: March 2026

Location: Spencer County

#### TANF - APPLICATIONS

	March 2026	February 2026	March 2025	Annual Change
<b>Number of Applications</b>	5	8	6	-16.67%

#### TANF - RECIPIENTS BY ZIP CODE

ZIP Code	Households	Recipients
47523	1	1
47634	1	1
47635	2	4
<b>Total</b>	<b>4</b>	<b>6</b>



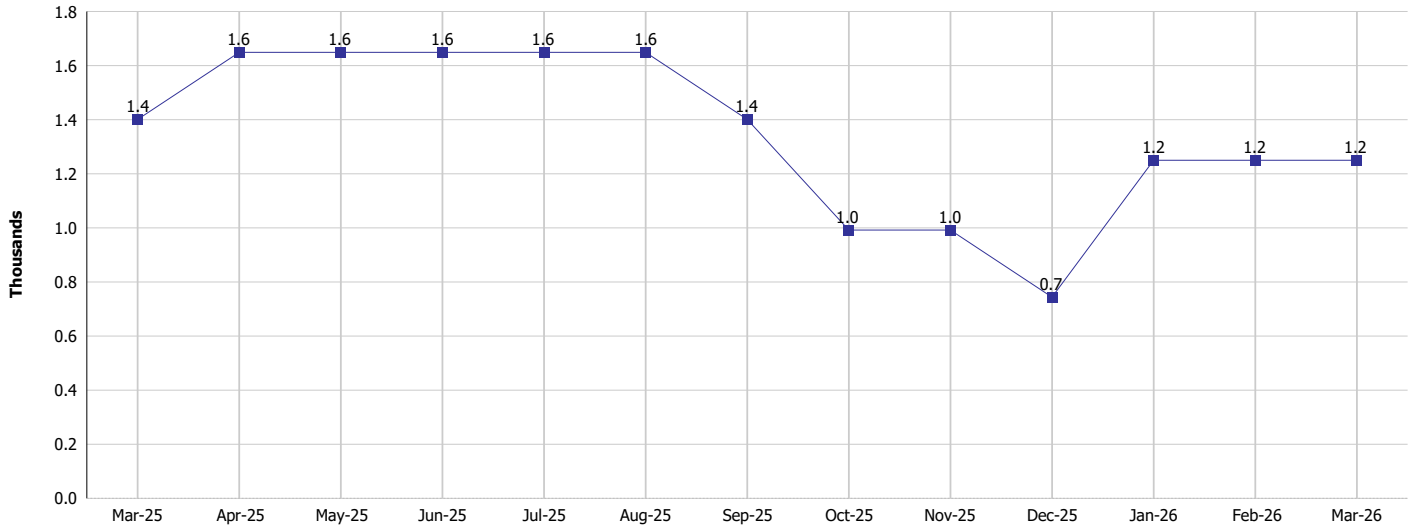
# DIVISION OF FAMILY RESOURCES

## Monthly Management Report

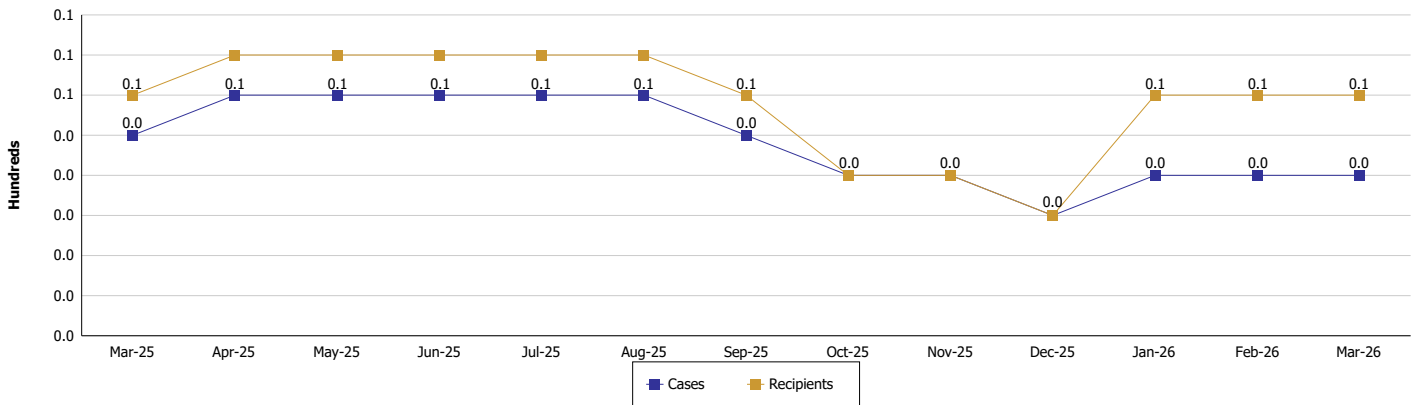
Reporting Month: March 2026 Location: Spencer County

### TEMPORARY ASSISTANCE FOR NEEDY FAMILIES (TANF)

#### TANF Regular And TANF Two-Parent Cash Assistance



#### TANF Cases and Recipients (TANF Regular and TANF Two-Parent)





## DIVISION OF FAMILY RESOURCES

### Monthly Management Report

Reporting Month: March 2026

Location: Spencer County

#### SUPPLEMENTAL NUTRITION ASSISTANCE PROGRAM (SNAP)

	March 2026	February 2026	March 2025	Annual Change
Total issuance	\$187,007	\$196,263	\$210,927	-11.34%
Number of households receiving SNAP benefits	523	550	568	-7.92%
Number of recipients	1,025	1,096	1,160	-11.64%
Average issuance per household	\$357.57	\$356.84	\$371.35	-3.71%
Average issuance per recipient	\$182.45	\$179.07	\$181.83	0.34%
Number of Applications	56	59	52	7.69%



## DIVISION OF FAMILY RESOURCES

### Monthly Management Report

Reporting Month: March 2026 Location: Spencer County

#### SNAP - RECIPIENTS BY ZIP CODE

ZIP Code	Households	Recipients
46901	1	5
47240	1	1
47523	62	134
47531	7	15
47532	2	6
47537	11	23
47550	8	24
47552	1	2
47576	2	2
47577	13	18
47579	7	15
47588	8	16
47601	4	10
47611	47	91
47615	56	109
47634	65	124
47635	225	424
47637	2	4
None	1	2
<b>Totals</b>	<b>523</b>	<b>1,025</b>



## DIVISION OF FAMILY RESOURCES

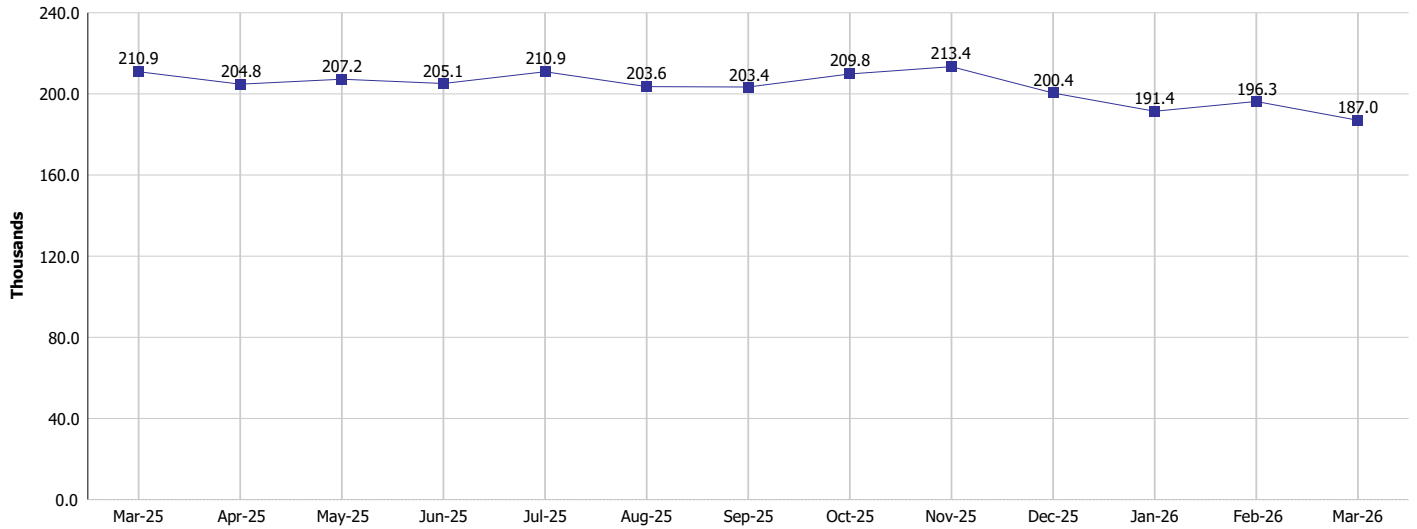
### Monthly Management Report

Reporting Month: March 2026

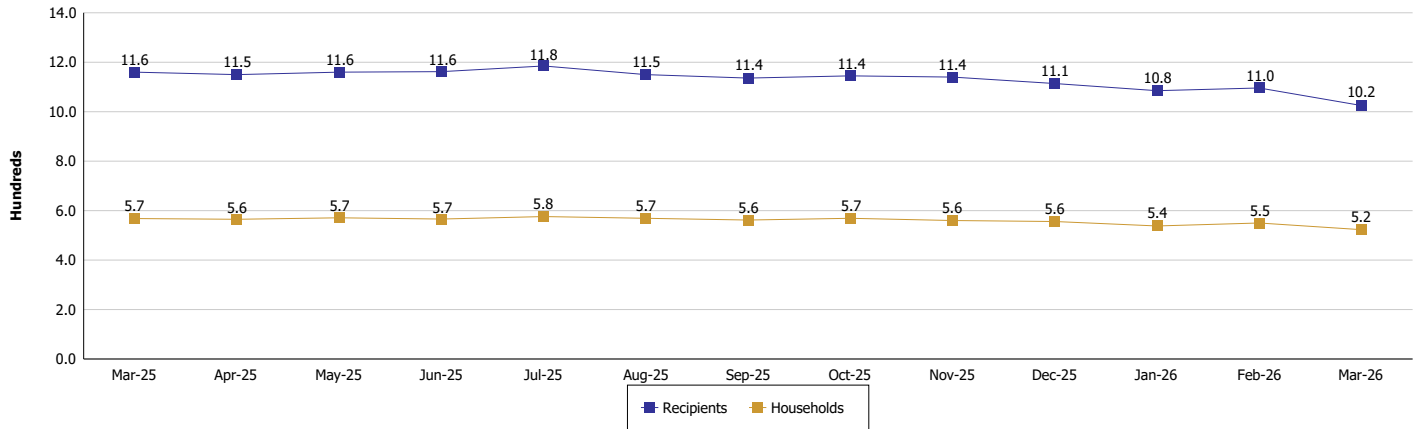
Location: Spencer County

#### SUPPLEMENTAL NUTRITION ASSISTANCE PROGRAM (SNAP)

SNAP Issuance



SNAP Households and Recipients





## DIVISION OF FAMILY RESOURCES

### Monthly Management Report

Reporting Month: March 2026

Location: Spencer County

#### HIP 2.0 and SNAP

	March 2026	February 2026	March 2025	Annual Change
Total HIP 2.0 Members	1,143	1,192	1,503	-23.95%
HIP Members also SNAP Recipients	304	341	388	-21.65%
Percentage HIP Members SNAP Recipients	26.6%	28.6%	25.8%	0.78
HIP Members SNAP ABAWDs	24	30	12	100.00%
Percentage HIP Members SNAP ABAWDs	2.1%	2.5%	0.8%	1.3



## DIVISION OF FAMILY RESOURCES

### Monthly Management Report

Reporting Month: March 2026

Location: Spencer County

#### INDIANA MANPOWER PLACEMENT AND COMPREHENSIVE TRAINING (IMPACT)

	March 2026	February 2026	March 2025	Annual Change
Number of IMPACT cases	0	0	1	-100.00%
Number of TANF IMPACT adults	0	0	0	
Number of SNAP IMPACT Cases	0	0	1	-100.00%
Total number of adults employed	0	3	4	-100.00%
Number of TANF IMPACT adults newly employed (within past 30 days)	0	0	0	
Number of SNAP IMPACT adults employed	0	3	4	-100.00%
Total number of adults ineligible due to employment	5	2	2	150.00%
Number of TANF adults ineligible due to employment	0	0	0	
Number of SNAP adults ineligible due to employment	5	2	2	150.00%

**IMPACT Caseloads**  
(SNAP, TANF, Total Caseload)

