



## DIVISION OF FAMILY RESOURCES

# Statewide Monthly Management Report September 2025

### State of Indiana

Mike Braun  
Governor

### Family and Social Services Administration

Mitch Roob  
Secretary

### Division of Family Resources

Sunshine Beam  
Director

For questions regarding data on this report contact:  
[office.Communications@fssa.IN.gov](mailto:office.Communications@fssa.IN.gov)



## State of Indiana

Published October 2025



## DIVISION OF FAMILY RESOURCES

### Monthly Management Report

Reporting Month: September 2025

Location: Statewide

#### TEMPORARY ASSISTANCE FOR NEEDY FAMILIES (TANF)

Child-Only and One-Parent Families	September 2025	August 2025	September 2024	Annual Change
Number of families receiving TANF Grants	4,917	4,880	4,976	-1.19%
Total number of grant recipients	11,637	11,589	11,082	5.01%
Number of adult grant recipients	2,220	2,208	2,085	6.47%
Number of child grant recipients	9,417	9,381	8,997	4.67%
Total payments	\$2,002,943	\$1,984,394	\$1,919,755	4.33%
Average payment per case	\$407.35	\$406.64	\$385.80	5.59%
Average payment per recipient	\$172.12	\$171.23	\$173.23	-0.64%
Number of cases with benefits reduced to zero	98	108	115	-14.78%
Number of recipients with benefits reduced to zero	188	204	217	-13.36%
Number of adult recipients with benefit reduced to zero	23	30	29	-20.69%
Number of child recipients with benefit reduced to zero	165	174	188	-12.23%

Pregnancy TANF Families	September 2025	August 2025	September 2024	Annual Change
Number of families receiving TANF Grants	144	141	110	30.91%
Total number of grant recipients	144	141	110	30.91%
Total payments	\$35,368.00	\$33,971.00	\$27,207.00	30.00%
Average payment per case	\$245.61	\$240.93	\$247.34	-0.70%
Average payment per recipient	\$245.61	\$240.93	\$247.34	-0.70%
Number of cases with benefits reduced to zero	2	3	0	0%
Number of recipients with benefits reduced to zero	2	3	0	0%



## DIVISION OF FAMILY RESOURCES

### Monthly Management Report

Two-Parent Families	September 2025	August 2025	September 2024	Annual Change
Number of families receiving TANF Grants	125	145	644	-80.59%
Total number of grant recipients	546	624	2,416	-77.40%
Number of adult grant recipients	245	283	1,282	-80.89%
Number of child grant recipients	301	341	1,134	-73.46%
Total payments	\$74,056	\$85,422	\$346,458	-78.62%
Average payment per case	\$592.45	\$589.12	\$537.98	10.12%
Average payment per recipient	\$135.63	\$136.89	\$143.40	-5.42%
Number of cases with benefits reduced to zero	3	2	2	50.00%
Number of recipients with benefits reduced to zero	13	7	7	85.71%
Number of adult recipients with benefit reduced to zero	6	4	4	50.00%
Number of child recipients with benefit reduced to zero	7	3	3	133.33%

Note: The two-parent case count includes cases in which a parent living in the home is excluded from receiving TANF benefits but whose income is used in the TANF eligibility determination.



## DIVISION OF FAMILY RESOURCES

### Monthly Management Report

Reporting Month: September 2025

Location: Statewide

#### TANF - APPLICATIONS

	September 2025	August 2025	September 2024	Annual Change
Number of Applications	6,095	6,276	7,822	-22.08%



## DIVISION OF FAMILY RESOURCES

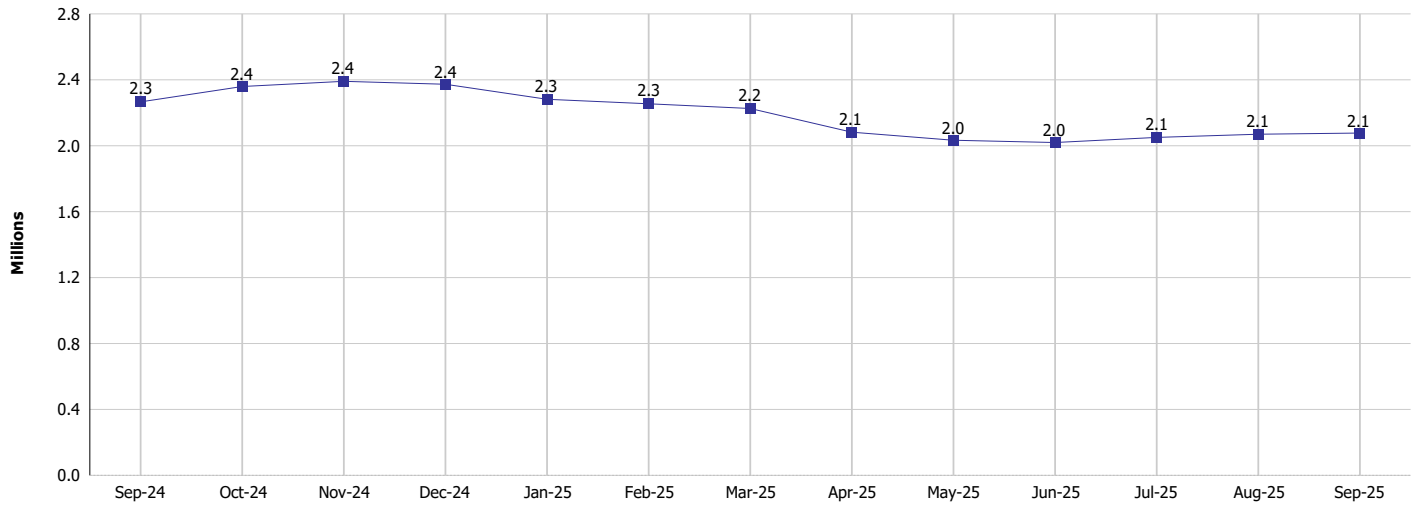
### Monthly Management Report

Reporting Month: September 2025

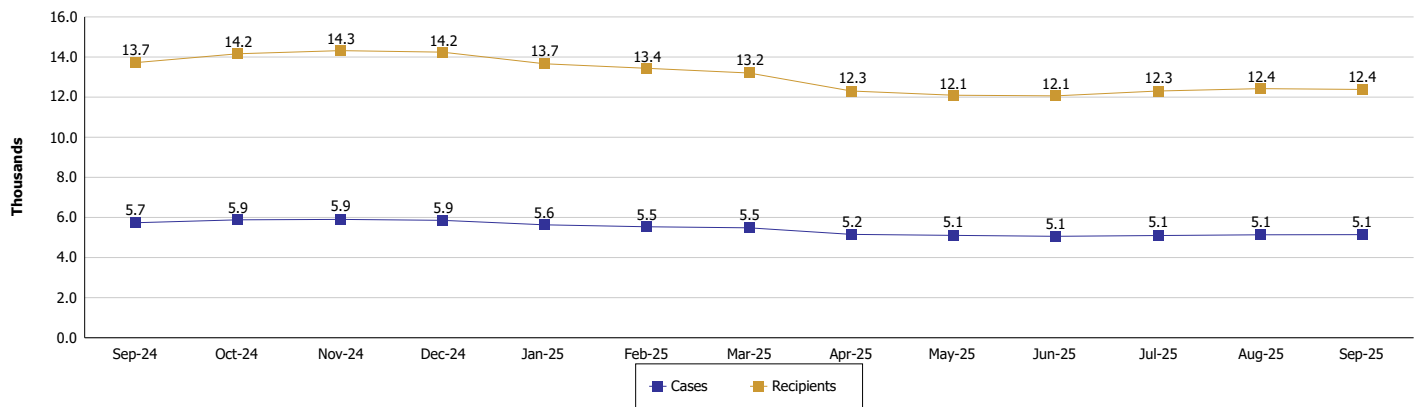
Location: Statewide

#### TEMPORARY ASSISTANCE FOR NEEDY FAMILIES (TANF)

**TANF Cash Assistance**  
(TANF Regular and TANF Two-Parent)



**TANF Cases and Recipients**  
(TANF Regular and TANF Two-Parent)





**DIVISION OF FAMILY RESOURCES**

**Monthly Management Report**

Reporting Month: September 2025

Location: Statewide

**SUPPLEMENTAL NUTRITION ASSISTANCE PROGRAM (SNAP)**

	September 2025	August 2025	September 2024	Annual Change
Total issuance	\$111,460,740	\$111,489,124	\$122,563,736	-9.06%
Number of households receiving SNAP benefits	273,867	273,964	292,940	-6.51%
Number of recipients	571,594	572,388	612,340	-6.65%
Average issuance per household	\$406.99	\$406.95	\$418.39	-2.73%
Average issuance per recipient	\$195.00	\$194.78	\$200.16	-2.58%
Number of Applications	35,722	37,270	41,006	-12.89%



## DIVISION OF FAMILY RESOURCES

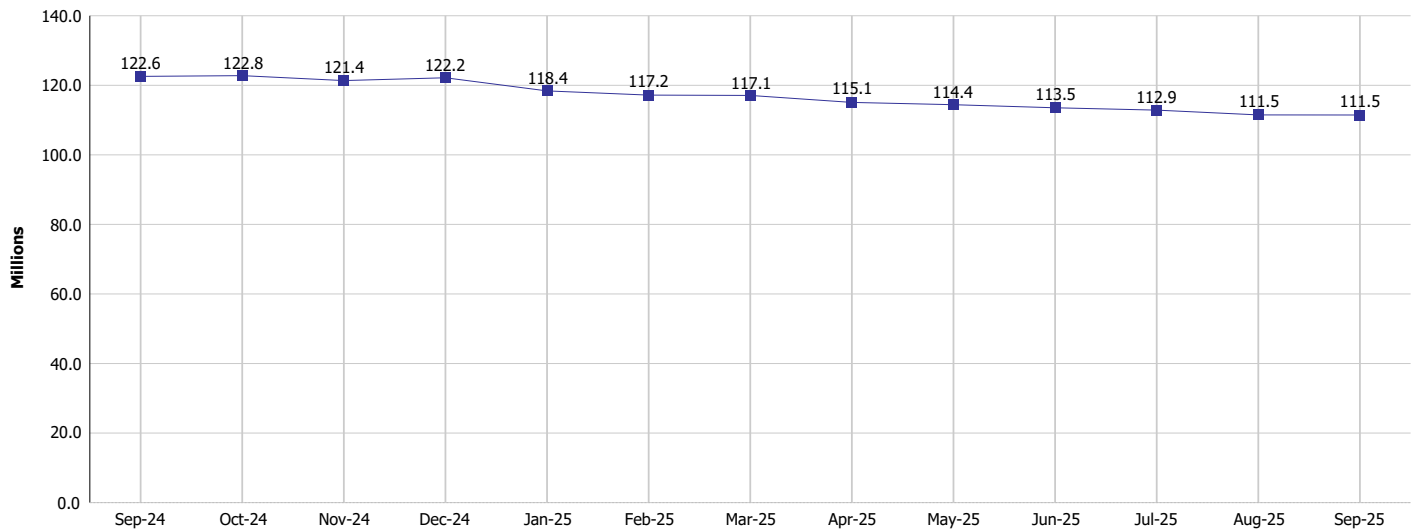
### Monthly Management Report

Reporting Month: September 2025

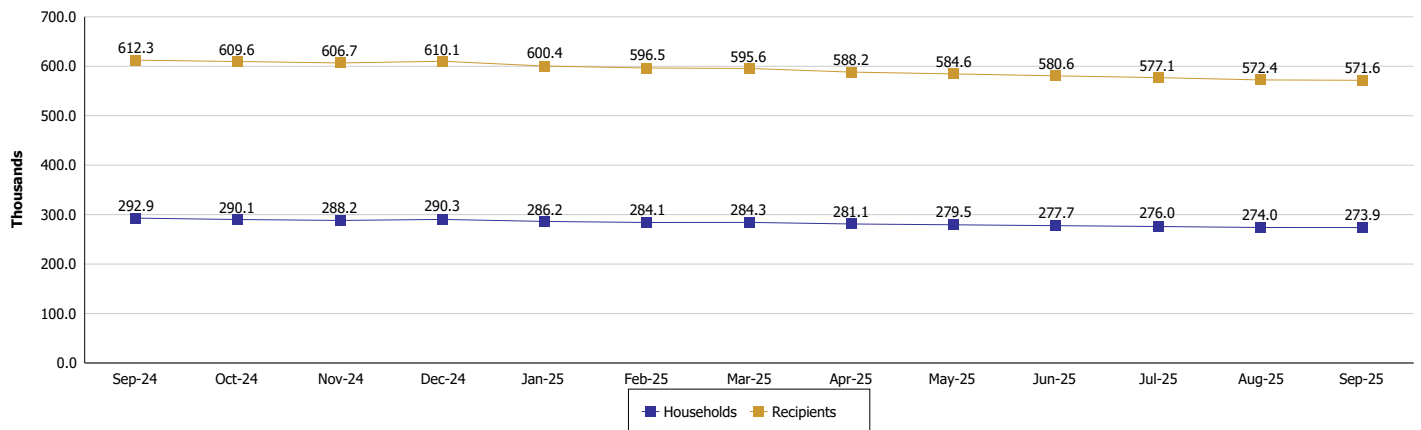
Location: Statewide

#### SUPPLEMENTAL NUTRITION ASSISTANCE PROGRAM (SNAP)

##### SNAP Issuance



##### SNAP Households and Recipients





## DIVISION OF FAMILY RESOURCES

### Monthly Management Report

Reporting Month: September 2025

Location: Statewide

#### HIP 2.0 and SNAP

	September 2025	August 2025	September 2024	Annual Change
Total HIP 2.0 Members	643,527	654,320	758,265	-15.13%
HIP Members also SNAP Recipients	168,838	168,926	185,417	-8.94%
Percentage HIP Members SNAP Recipients	26.2%	25.8%	24.5%	1.78
HIP Members SNAP ABAWDs	4,377	4,393	11,090	-60.53%
Percentage HIP Members SNAP ABAWDs	0.7%	0.7%	1.5%	-0.8





## DIVISION OF FAMILY RESOURCES

### Monthly Management Report

Reporting Month: September 2025

Location: Statewide

#### INDIANA MANPOWER PLACEMENT AND COMPREHENSIVE TRAINING (IMPACT)

	September 2025	August 2025	September 2024	Annual Change
Number of IMPACT cases	725	706	524	38.36%
Number of TANF IMPACT adults	258	255	196	31.63%
Number of SNAP IMPACT Cases	467	451	328	42.38%
Total number of adults employed	1,407	1,375	1,570	-10.38%
Number of TANF IMPACT adults newly employed (within past 30 days)	82	61	65	26.15%
Number of SNAP IMPACT adults employed	1,325	1,314	1,505	-11.96%
Total number of adults ineligible due to employment	2,116	2,114	1,854	14.13%
Number of TANF adults ineligible due to employment	39	70	76	-48.68%
Number of SNAP adults ineligible due to employment	2,077	2,044	1,778	16.82%

**IMPACT Caseloads**  
(SNAP, TANF, Total Caseload)

