



DIVISION OF FAMILY RESOURCES

Statewide Monthly Management Report May 2025

State of Indiana

Mike Braun
Governor

Family and Social Services Administration

Mitch Roob
Secretary

Division of Family Resources

Sunshine Beam
Director

For questions regarding data on this report contact:
office.Communications@fssa.IN.gov



State of Indiana

Published June 2025



DIVISION OF FAMILY RESOURCES

Monthly Management Report

Reporting Month: May 2025

Location: Statewide

TEMPORARY ASSISTANCE FOR NEEDY FAMILIES (TANF)

Child-Only and One-Parent Families	May 2025	April 2025	May 2024	Annual Change
Number of families receiving TANF Grants	4,734	4,717	4,428	6.91%
Total number of grant recipients	10,807	10,774	9,432	14.58%
Number of adult grant recipients	2,003	1,974	1,527	31.17%
Number of child grant recipients	8,804	8,800	7,905	11.37%
Total payments	\$1,884,620	\$1,891,960	\$1,012,034	86.22%
Average payment per case	\$398.10	\$401.09	\$228.55	74.18%
Average payment per recipient	\$174.39	\$175.60	\$107.30	62.53%
Number of cases with benefits reduced to zero	115	112	138	-16.67%
Number of recipients with benefits reduced to zero	219	205	264	-17.05%
Number of adult recipients with benefit reduced to zero	34	33	35	-2.86%
Number of child recipients with benefit reduced to zero	185	172	229	-19.21%

Pregnancy TANF Families	May 2025	April 2025	May 2024	Annual Change
Number of families receiving TANF Grants	131	105	0	0%
Total number of grant recipients	131	105	0	0%
Total payments	\$32,431.00	\$25,949.00	\$0.00	0%
Average payment per case	\$247.56	\$247.13	\$0.00	0.00%
Average payment per recipient	\$247.56	\$247.13	\$0.00	0.00%
Number of cases with benefits reduced to zero	3	4	0	0%
Number of recipients with benefits reduced to zero	3	4	0	0%



DIVISION OF FAMILY RESOURCES

Monthly Management Report

Two-Parent Families	May 2025	April 2025	May 2024	Annual Change
Number of families receiving TANF Grants	255	325	806	-68.36%
Total number of grant recipients	1,062	1,323	2,961	-64.13%
Number of adult grant recipients	499	639	1,602	-68.85%
Number of child grant recipients	563	684	1,359	-58.57%
Total payments	\$148,728	\$190,243	\$280,937	-47.06%
Average payment per case	\$583.25	\$585.36	\$348.56	67.33%
Average payment per recipient	\$140.05	\$143.80	\$94.88	47.60%
Number of cases with benefits reduced to zero	2	1	7	-71.43%
Number of recipients with benefits reduced to zero	7	3	26	-73.08%
Number of adult recipients with benefit reduced to zero	4	2	14	-71.43%
Number of child recipients with benefit reduced to zero	3	1	12	-75.00%



DIVISION OF FAMILY RESOURCES

Monthly Management Report

Reporting Month: May 2025

Location: Statewide

TANF - APPLICATIONS

	May 2025	April 2025	May 2024	Annual Change
Number of Applications	5,848	5,877	7,923	-26.19%



DIVISION OF FAMILY RESOURCES

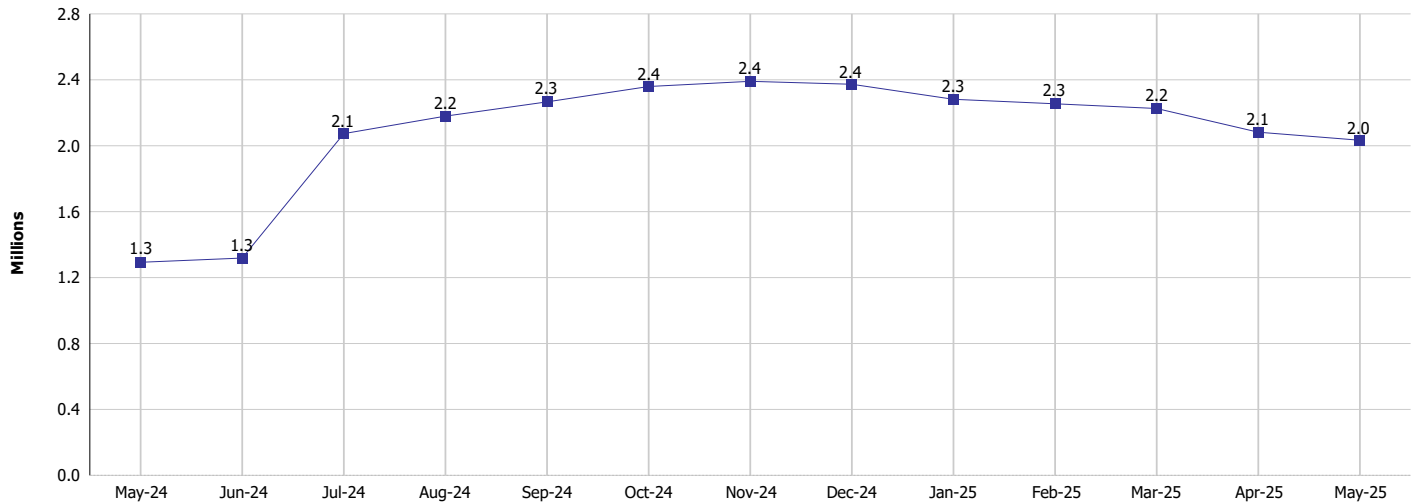
Monthly Management Report

Reporting Month: May 2025

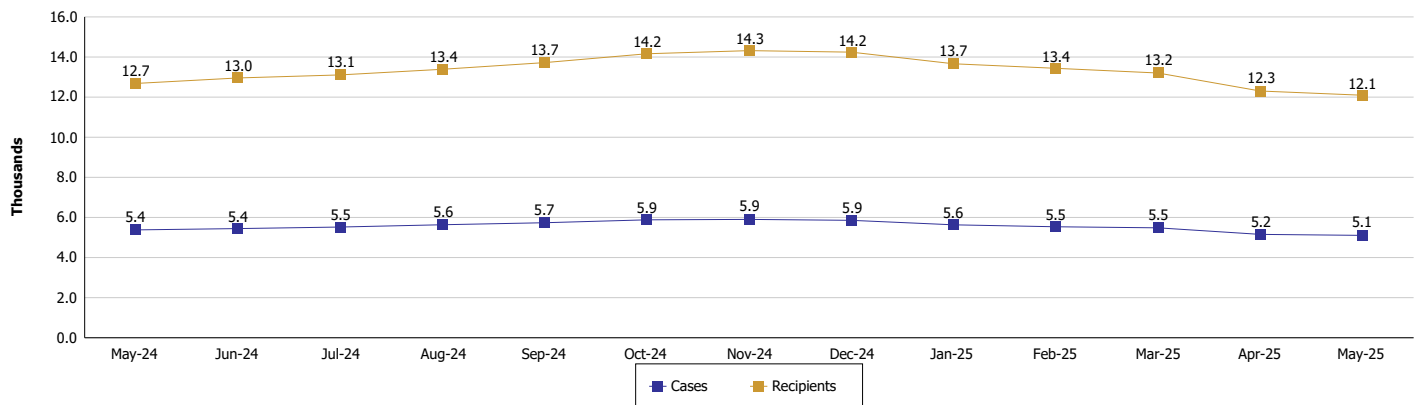
Location: Statewide

TEMPORARY ASSISTANCE FOR NEEDY FAMILIES (TANF)

TANF Cash Assistance
(TANF Regular and TANF Two-Parent)



TANF Cases and Recipients
(TANF Regular and TANF Two-Parent)





DIVISION OF FAMILY RESOURCES

Monthly Management Report

Reporting Month: May 2025

Location: Statewide

SUPPLEMENTAL NUTRITION ASSISTANCE PROGRAM (SNAP)

	May 2025	April 2025	May 2024	Annual Change
Total issuance	\$114,426,778	\$115,077,807	\$120,516,775	-5.05%
Number of households receiving SNAP benefits	279,453	281,112	287,453	-2.78%
Number of recipients	584,550	588,184	601,464	-2.81%
Average issuance per household	\$409.47	\$409.37	\$419.26	-2.34%
Average issuance per recipient	\$195.75	\$195.65	\$200.37	-2.31%
Number of Applications	35,912	36,506	41,483	-13.43%



DIVISION OF FAMILY RESOURCES

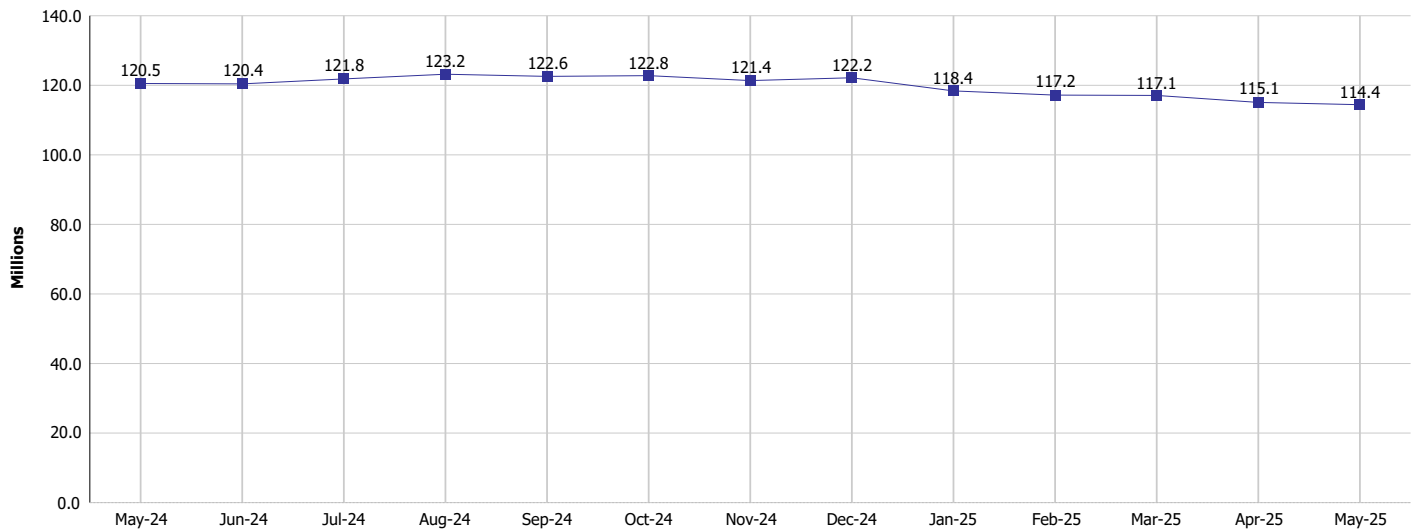
Monthly Management Report

Reporting Month: May 2025

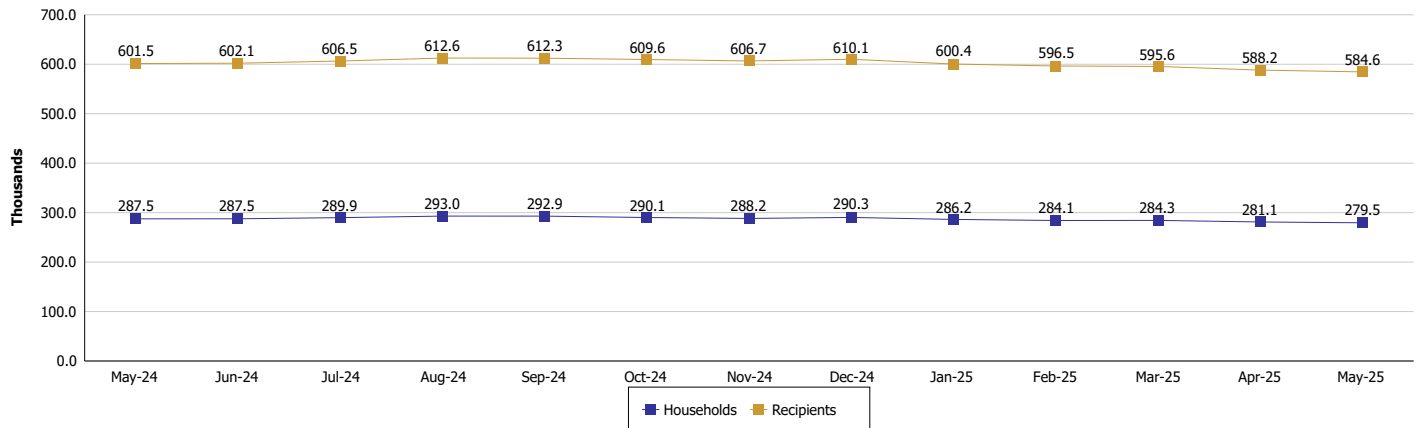
Location: Statewide

SUPPLEMENTAL NUTRITION ASSISTANCE PROGRAM (SNAP)

SNAP Issuance



SNAP Households and Recipients





DIVISION OF FAMILY RESOURCES

Monthly Management Report

Reporting Month: May 2025

Location: Statewide

HIP 2.0 and SNAP

	May 2025	April 2025	May 2024	Annual Change
Total HIP 2.0 Members	714,194	743,140	762,851	-6.38%
HIP Members also SNAP Recipients	174,114	176,885	180,815	-3.71%
Percentage HIP Members SNAP Recipients	24.4%	23.8%	23.7%	0.68
HIP Members SNAP ABAWDs	4,247	4,789	9,041	-53.03%
Percentage HIP Members SNAP ABAWDs	0.6%	0.6%	1.2%	-0.6



DIVISION OF FAMILY RESOURCES

Monthly Management Report

Reporting Month: May 2025

Location: Statewide

INDIANA MANPOWER PLACEMENT AND COMPREHENSIVE TRAINING (IMPACT)

	May 2025	April 2025	May 2024	Annual Change
Number of IMPACT cases	517	651	371	39.35%
Number of TANF IMPACT adults	169	240	119	42.02%
Number of SNAP IMPACT Cases	348	411	252	38.10%
Total number of adults employed	1,467	1,710	1,478	-0.74%
Number of TANF IMPACT adults newly employed (within past 30 days)	79	65	40	97.50%
Number of SNAP IMPACT adults employed	1,388	1,645	1,438	-3.48%
Total number of adults ineligible due to employment	2,276	1,928	1,788	27.29%
Number of TANF adults ineligible due to employment	77	86	61	26.23%
Number of SNAP adults ineligible due to employment	2,199	1,842	1,727	27.33%

IMPACT Caseloads
(SNAP, TANF, Total Caseload)

