



## DIVISION OF FAMILY RESOURCES

# Statewide Monthly Management Report June 2025

### State of Indiana

Mike Braun  
Governor

### Family and Social Services Administration

Mitch Roob  
Secretary

### Division of Family Resources

Sunshine Beam  
Director

For questions regarding data on this report contact:  
[office.Communications@fssa.IN.gov](mailto:office.Communications@fssa.IN.gov)



## State of Indiana

Published July 2025



## DIVISION OF FAMILY RESOURCES

### Monthly Management Report

Reporting Month: June 2025

Location: Statewide

#### TEMPORARY ASSISTANCE FOR NEEDY FAMILIES (TANF)

Child-Only and One-Parent Families	June 2025	May 2025	June 2024	Annual Change
Number of families receiving TANF Grants	4,722	4,734	4,500	4.93%
Total number of grant recipients	10,921	10,807	9,723	12.32%
Number of adult grant recipients	2,033	2,003	1,646	23.51%
Number of child grant recipients	8,888	8,804	8,077	10.04%
Total payments	\$1,896,000	\$1,884,620	\$1,040,362	82.24%
Average payment per case	\$401.52	\$398.10	\$231.19	73.68%
Average payment per recipient	\$173.61	\$174.39	\$107.00	62.25%
Number of cases with benefits reduced to zero	120	115	140	-14.29%
Number of recipients with benefits reduced to zero	243	219	275	-11.64%
Number of adult recipients with benefit reduced to zero	36	34	33	9.09%
Number of child recipients with benefit reduced to zero	207	185	242	-14.46%

Pregnancy TANF Families	June 2025	May 2025	June 2024	Annual Change
Number of families receiving TANF Grants	128	131	0	0%
Total number of grant recipients	128	131	0	0%
Total payments	\$31,434.00	\$32,431.00	\$0.00	0%
Average payment per case	\$245.58	\$247.56	\$0.00	0.00%
Average payment per recipient	\$245.58	\$247.56	\$0.00	0.00%
Number of cases with benefits reduced to zero	2	3	0	0%
Number of recipients with benefits reduced to zero	2	3	0	0%



## DIVISION OF FAMILY RESOURCES

### Monthly Management Report

Two-Parent Families	June 2025	May 2025	June 2024	Annual Change
Number of families receiving TANF Grants	214	255	803	-73.35%
Total number of grant recipients	888	1,062	2,952	-69.92%
Number of adult grant recipients	417	499	1,592	-73.81%
Number of child grant recipients	471	563	1,360	-65.37%
Total payments	\$123,420	\$148,728	\$278,227	-55.64%
Average payment per case	\$576.73	\$583.25	\$346.48	66.45%
Average payment per recipient	\$138.99	\$140.05	\$94.25	47.47%
Number of cases with benefits reduced to zero	3	2	2	50.00%
Number of recipients with benefits reduced to zero	12	7	7	71.43%
Number of adult recipients with benefit reduced to zero	6	4	4	50.00%
Number of child recipients with benefit reduced to zero	6	3	3	100.00%



## DIVISION OF FAMILY RESOURCES

### Monthly Management Report

Reporting Month: June 2025

Location: Statewide

#### TANF - APPLICATIONS

	June 2025	May 2025	June 2024	Annual Change
Number of Applications	6,024	5,848	7,286	-17.32%



## DIVISION OF FAMILY RESOURCES

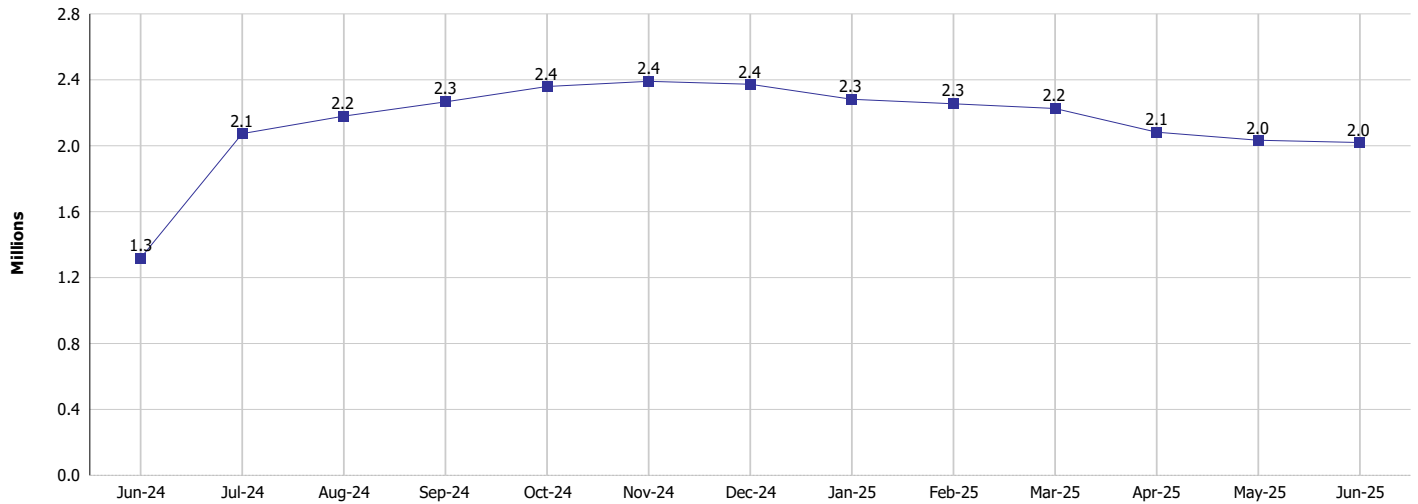
### Monthly Management Report

Reporting Month: June 2025

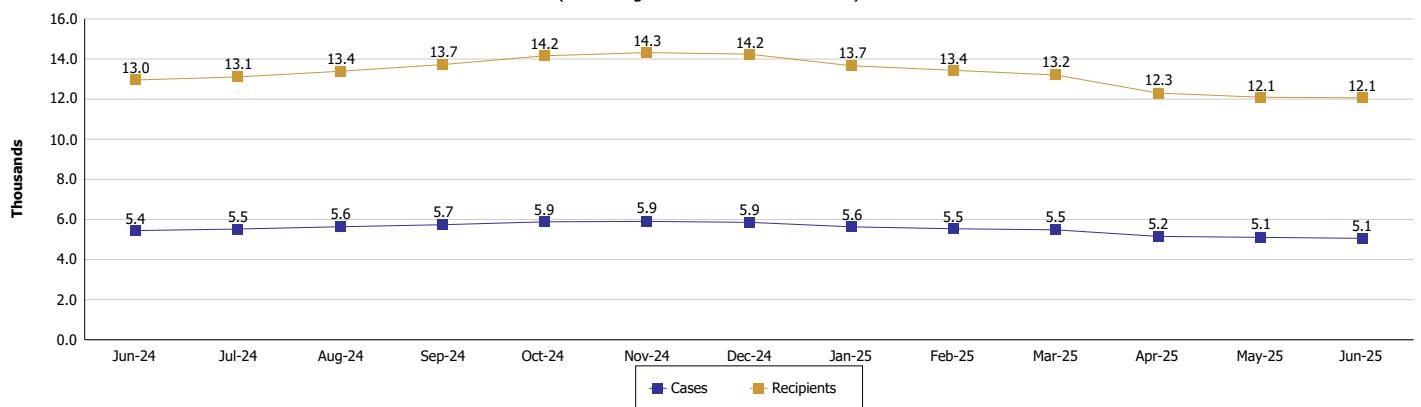
Location: Statewide

#### TEMPORARY ASSISTANCE FOR NEEDY FAMILIES (TANF)

**TANF Cash Assistance**  
(TANF Regular and TANF Two-Parent)



**TANF Cases and Recipients**  
(TANF Regular and TANF Two-Parent)





**DIVISION OF FAMILY RESOURCES**

**Monthly Management Report**

Reporting Month: June 2025

Location: Statewide

**SUPPLEMENTAL NUTRITION ASSISTANCE PROGRAM (SNAP)**

	June 2025	May 2025	June 2024	Annual Change
Total issuance	\$113,535,178	\$114,426,778	\$120,413,964	-5.71%
Number of households receiving SNAP benefits	277,693	279,453	287,519	-3.42%
Number of recipients	580,607	584,550	602,147	-3.58%
Average issuance per household	\$408.85	\$409.47	\$418.80	-2.38%
Average issuance per recipient	\$195.55	\$195.75	\$199.97	-2.21%
Number of Applications	36,491	35,912	38,951	-6.32%



## DIVISION OF FAMILY RESOURCES

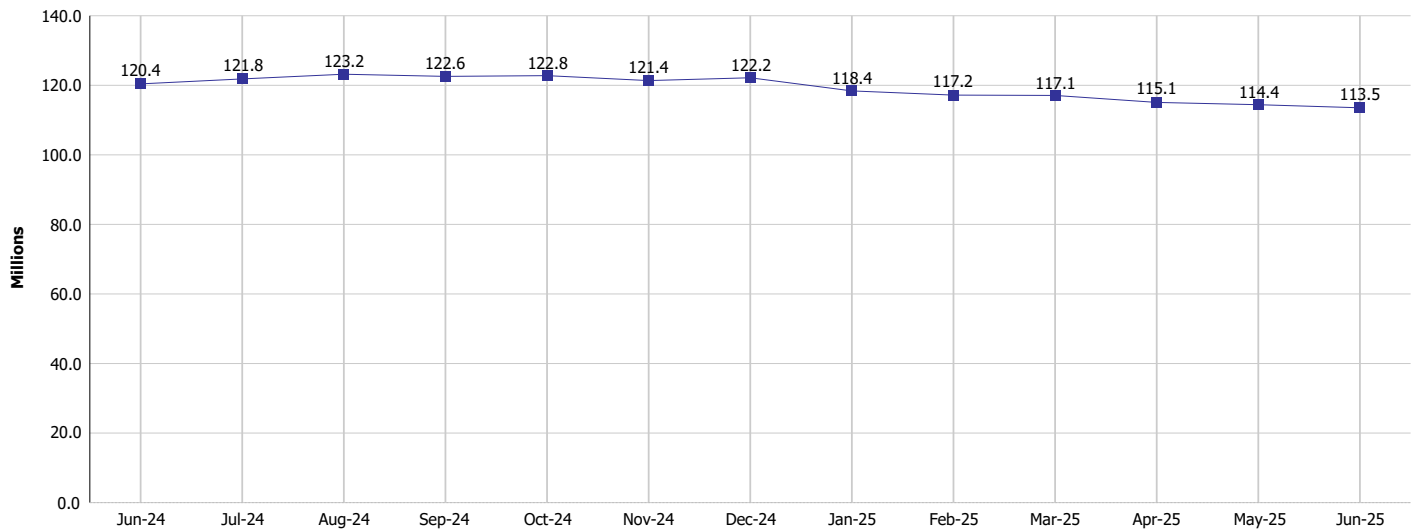
### Monthly Management Report

Reporting Month: June 2025

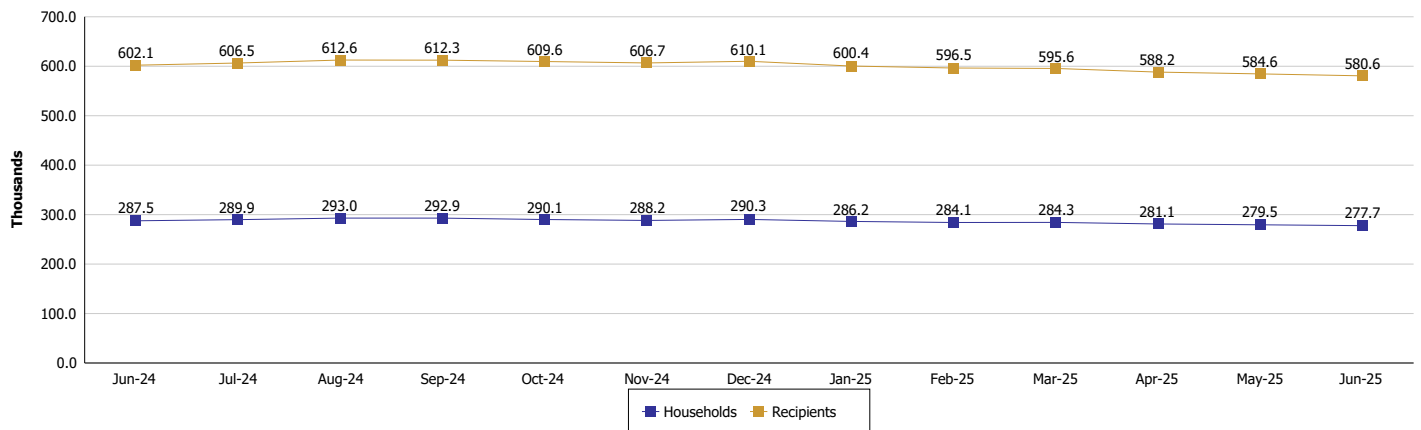
Location: Statewide

#### SUPPLEMENTAL NUTRITION ASSISTANCE PROGRAM (SNAP)

##### SNAP Issuance



##### SNAP Households and Recipients





## DIVISION OF FAMILY RESOURCES

### Monthly Management Report

Reporting Month: June 2025

Location: Statewide

#### HIP 2.0 and SNAP

	June 2025	May 2025	June 2024	Annual Change
Total HIP 2.0 Members	691,628	714,194	760,298	-9.03%
HIP Members also SNAP Recipients	172,544	174,114	180,939	-4.64%
Percentage HIP Members SNAP Recipients	24.9%	24.4%	23.8%	1.15
HIP Members SNAP ABAWDs	4,287	4,247	8,767	-51.10%
Percentage HIP Members SNAP ABAWDs	0.6%	0.6%	1.2%	-0.5





## DIVISION OF FAMILY RESOURCES

### Monthly Management Report

Reporting Month: June 2025

Location: Statewide

#### INDIANA MANPOWER PLACEMENT AND COMPREHENSIVE TRAINING (IMPACT)

	June 2025	May 2025	June 2024	Annual Change
Number of IMPACT cases	559	517	412	35.68%
Number of TANF IMPACT adults	195	169	133	46.62%
Number of SNAP IMPACT Cases	364	348	279	30.47%
Total number of adults employed	1,694	1,467	1,698	-0.24%
Number of TANF IMPACT adults newly employed (within past 30 days)	72	79	82	-12.20%
Number of SNAP IMPACT adults employed	1,622	1,388	1,616	0.37%
Total number of adults ineligible due to employment	2,137	2,276	1,686	26.75%
Number of TANF adults ineligible due to employment	64	77	76	-15.79%
Number of SNAP adults ineligible due to employment	2,073	2,199	1,610	28.76%

**IMPACT Caseloads**  
(SNAP, TANF, Total Caseload)

