



DIVISION OF FAMILY RESOURCES

Statewide Monthly Management Report July 2025

State of Indiana

Mike Braun
Governor

Family and Social Services Administration

Mitch Roob
Secretary

Division of Family Resources

Sunshine Beam
Director

For questions regarding data on this report contact:
office.Communications@fssa.IN.gov



State of Indiana

Published August 2025



DIVISION OF FAMILY RESOURCES

Monthly Management Report

Reporting Month: July 2025

Location: Statewide

TEMPORARY ASSISTANCE FOR NEEDY FAMILIES (TANF)

Child-Only and One-Parent Families	July 2025	June 2025	July 2024	Annual Change
Number of families receiving TANF Grants	4,810	4,722	4,653	3.37%
Total number of grant recipients	11,349	10,921	10,095	12.42%
Number of adult grant recipients	2,128	2,033	1,802	18.09%
Number of child grant recipients	9,221	8,888	8,293	11.19%
Total payments	\$1,945,895	\$1,896,000	\$1,688,536	15.24%
Average payment per case	\$404.55	\$401.52	\$362.89	11.48%
Average payment per recipient	\$171.46	\$173.61	\$167.26	2.51%
Number of cases with benefits reduced to zero	112	120	112	0.00%
Number of recipients with benefits reduced to zero	206	243	218	-5.50%
Number of adult recipients with benefit reduced to zero	31	36	28	10.71%
Number of child recipients with benefit reduced to zero	175	207	190	-7.89%

Pregnancy TANF Families	July 2025	June 2025	July 2024	Annual Change
Number of families receiving TANF Grants	131	128	0	0%
Total number of grant recipients	131	128	0	0%
Total payments	\$31,522.00	\$31,434.00	\$0.00	0%
Average payment per case	\$240.63	\$245.58	\$0.00	0.00%
Average payment per recipient	\$240.63	\$245.58	\$0.00	0.00%
Number of cases with benefits reduced to zero	5	2	0	0%
Number of recipients with benefits reduced to zero	5	2	0	0%



DIVISION OF FAMILY RESOURCES

Monthly Management Report

Two-Parent Families	July 2025	June 2025	July 2024	Annual Change
Number of families receiving TANF Grants	175	214	752	-76.73%
Total number of grant recipients	747	888	2,777	-73.10%
Number of adult grant recipients	342	417	1,491	-77.06%
Number of child grant recipients	405	471	1,286	-68.51%
Total payments	\$104,670	\$123,420	\$384,828	-72.80%
Average payment per case	\$598.11	\$576.73	\$511.74	16.88%
Average payment per recipient	\$140.12	\$138.99	\$138.58	1.11%
Number of cases with benefits reduced to zero	1	3	5	-80.00%
Number of recipients with benefits reduced to zero	3	12	18	-83.33%
Number of adult recipients with benefit reduced to zero	2	6	10	-80.00%
Number of child recipients with benefit reduced to zero	1	6	8	-87.50%



DIVISION OF FAMILY RESOURCES

Monthly Management Report

Reporting Month: July 2025

Location: Statewide

TANF - APPLICATIONS

	July 2025	June 2025	July 2024	Annual Change
Number of Applications	6,319	6,024	8,950	-29.40%



DIVISION OF FAMILY RESOURCES

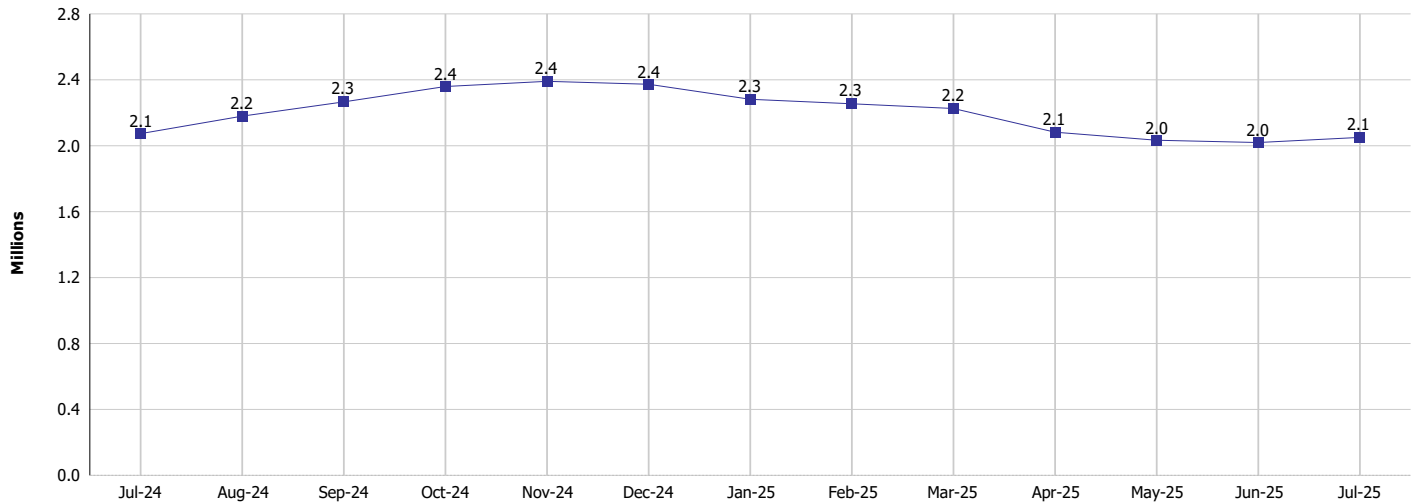
Monthly Management Report

Reporting Month: July 2025

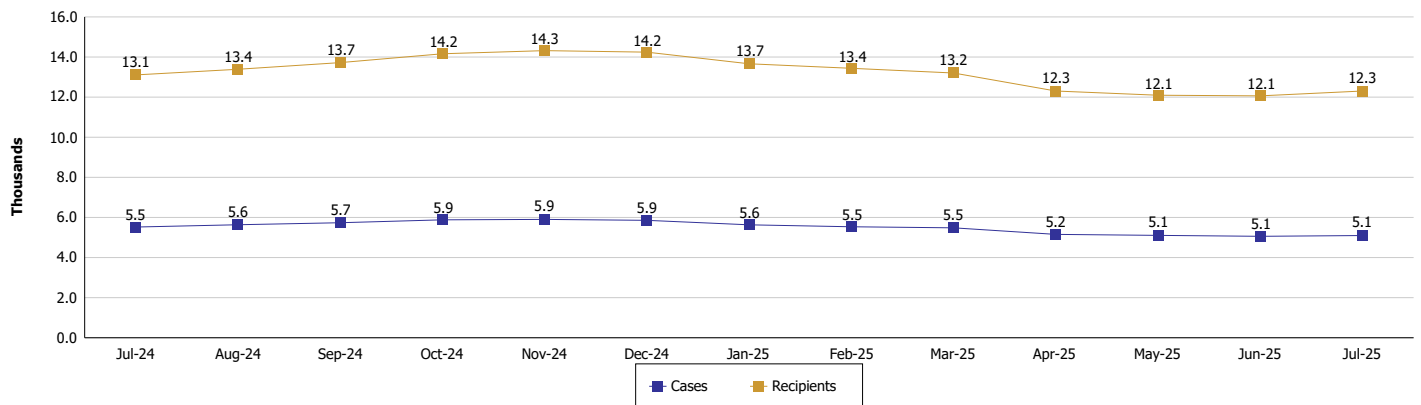
Location: Statewide

TEMPORARY ASSISTANCE FOR NEEDY FAMILIES (TANF)

TANF Cash Assistance
(TANF Regular and TANF Two-Parent)



TANF Cases and Recipients
(TANF Regular and TANF Two-Parent)





DIVISION OF FAMILY RESOURCES

Monthly Management Report

Reporting Month: July 2025

Location: Statewide

SUPPLEMENTAL NUTRITION ASSISTANCE PROGRAM (SNAP)

	July 2025	June 2025	July 2024	Annual Change
Total issuance	\$112,866,837	\$113,535,178	\$121,835,632	-7.36%
Number of households receiving SNAP benefits	275,966	277,693	289,873	-4.80%
Number of recipients	577,054	580,607	606,518	-4.86%
Average issuance per household	\$408.99	\$408.85	\$420.31	-2.69%
Average issuance per recipient	\$195.59	\$195.55	\$200.88	-2.63%
Number of Applications	38,305	36,491	45,853	-16.46%



DIVISION OF FAMILY RESOURCES

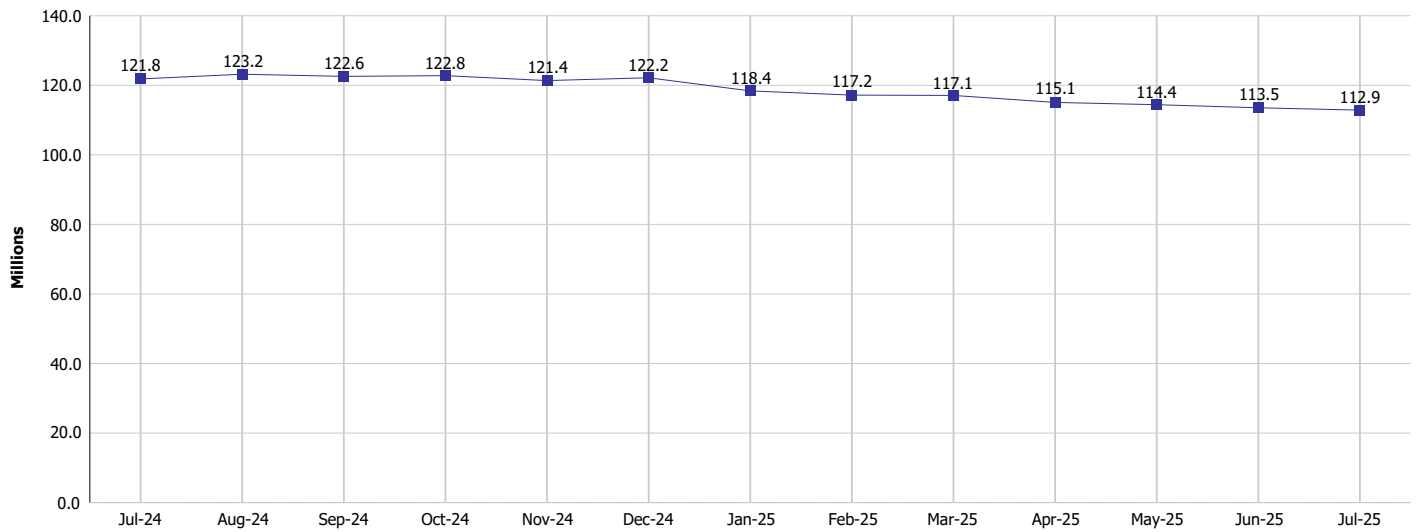
Monthly Management Report

Reporting Month: July 2025

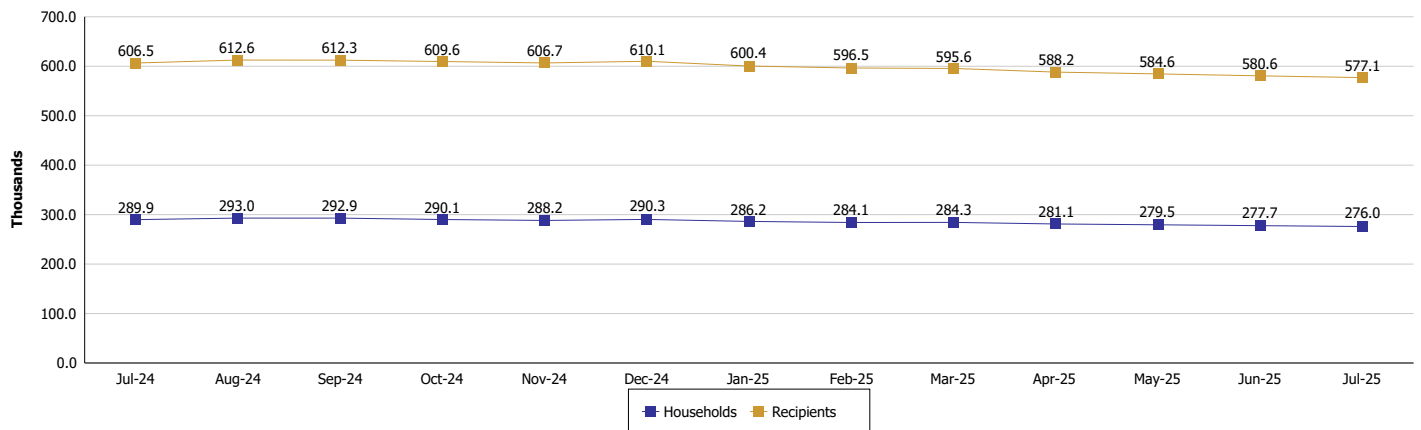
Location: Statewide

SUPPLEMENTAL NUTRITION ASSISTANCE PROGRAM (SNAP)

SNAP Issuance



SNAP Households and Recipients





DIVISION OF FAMILY RESOURCES

Monthly Management Report

Reporting Month: July 2025

Location: Statewide

HIP 2.0 and SNAP

	July 2025	June 2025	July 2024	Annual Change
Total HIP 2.0 Members	674,060	691,628	757,167	-10.98%
HIP Members also SNAP Recipients	170,785	172,544	182,472	-6.40%
Percentage HIP Members SNAP Recipients	25.3%	24.9%	24.1%	1.24
HIP Members SNAP ABAWDs	4,413	4,287	10,234	-56.88%
Percentage HIP Members SNAP ABAWDs	0.7%	0.6%	1.4%	-0.7



DIVISION OF FAMILY RESOURCES

Monthly Management Report

Reporting Month: July 2025

Location: Statewide

INDIANA MANPOWER PLACEMENT AND COMPREHENSIVE TRAINING (IMPACT)

	July 2025	June 2025	July 2024	Annual Change
Number of IMPACT cases	644	559	509	26.52%
Number of TANF IMPACT adults	228	195	184	23.91%
Number of SNAP IMPACT Cases	416	364	325	28.00%
Total number of adults employed	1,476	1,694	1,458	1.23%
Number of TANF IMPACT adults newly employed (within past 30 days)	68	72	56	21.43%
Number of SNAP IMPACT adults employed	1,408	1,622	1,402	0.43%
Total number of adults ineligible due to employment	2,141	2,137	1,570	36.37%
Number of TANF adults ineligible due to employment	58	64	78	-25.64%
Number of SNAP adults ineligible due to employment	2,083	2,073	1,492	39.61%

IMPACT Caseloads
(SNAP, TANF, Total Caseload)

