



## DIVISION OF FAMILY RESOURCES

# Statewide Monthly Management Report August 2025

### State of Indiana

Mike Braun  
Governor

### Family and Social Services Administration

Mitch Roob  
Secretary

### Division of Family Resources

Sunshine Beam  
Director

For questions regarding data on this report contact:  
[office.Communications@fssa.IN.gov](mailto:office.Communications@fssa.IN.gov)



## State of Indiana

Published September 2025



## DIVISION OF FAMILY RESOURCES

### Monthly Management Report

Reporting Month: August 2025

Location: Statewide

#### TEMPORARY ASSISTANCE FOR NEEDY FAMILIES (TANF)

Child-Only and One-Parent Families	August 2025	July 2025	August 2024	Annual Change
Number of families receiving TANF Grants	4,880	4,810	4,826	1.12%
Total number of grant recipients	11,589	11,349	10,587	9.46%
Number of adult grant recipients	2,208	2,128	1,954	13.00%
Number of child grant recipients	9,381	9,221	8,633	8.66%
Total payments	\$1,984,394	\$1,945,895	\$1,815,480	9.30%
Average payment per case	\$406.64	\$404.55	\$376.19	8.09%
Average payment per recipient	\$171.23	\$171.46	\$171.48	-0.15%
Number of cases with benefits reduced to zero	108	112	113	-4.42%
Number of recipients with benefits reduced to zero	204	206	210	-2.86%
Number of adult recipients with benefit reduced to zero	30	31	27	11.11%
Number of child recipients with benefit reduced to zero	174	175	183	-4.92%

Pregnancy TANF Families	August 2025	July 2025	August 2024	Annual Change
Number of families receiving TANF Grants	141	131	0	0%
Total number of grant recipients	141	131	0	0%
Total payments	\$33,971.00	\$31,522.00	\$0.00	0%
Average payment per case	\$240.93	\$240.63	\$0.00	0.00%
Average payment per recipient	\$240.93	\$240.63	\$0.00	0.00%
Number of cases with benefits reduced to zero	3	5	0	0%
Number of recipients with benefits reduced to zero	3	5	0	0%



## DIVISION OF FAMILY RESOURCES

### Monthly Management Report

Two-Parent Families	August 2025	July 2025	August 2024	Annual Change
Number of families receiving TANF Grants	145	175	695	-79.14%
Total number of grant recipients	624	747	2,586	-75.87%
Number of adult grant recipients	283	342	1,380	-79.49%
Number of child grant recipients	341	405	1,206	-71.72%
Total payments	\$85,422	\$104,670	\$364,020	-76.53%
Average payment per case	\$589.12	\$598.11	\$523.77	12.48%
Average payment per recipient	\$136.89	\$140.12	\$140.77	-2.75%
Number of cases with benefits reduced to zero	2	1	2	0.00%
Number of recipients with benefits reduced to zero	7	3	7	0.00%
Number of adult recipients with benefit reduced to zero	4	2	4	0.00%
Number of child recipients with benefit reduced to zero	3	1	3	0.00%



## DIVISION OF FAMILY RESOURCES

### Monthly Management Report

Reporting Month: August 2025

Location: Statewide

#### TANF - APPLICATIONS

	August 2025	July 2025	August 2024	Annual Change
Number of Applications	6,276	6,319	8,606	-27.07%



## DIVISION OF FAMILY RESOURCES

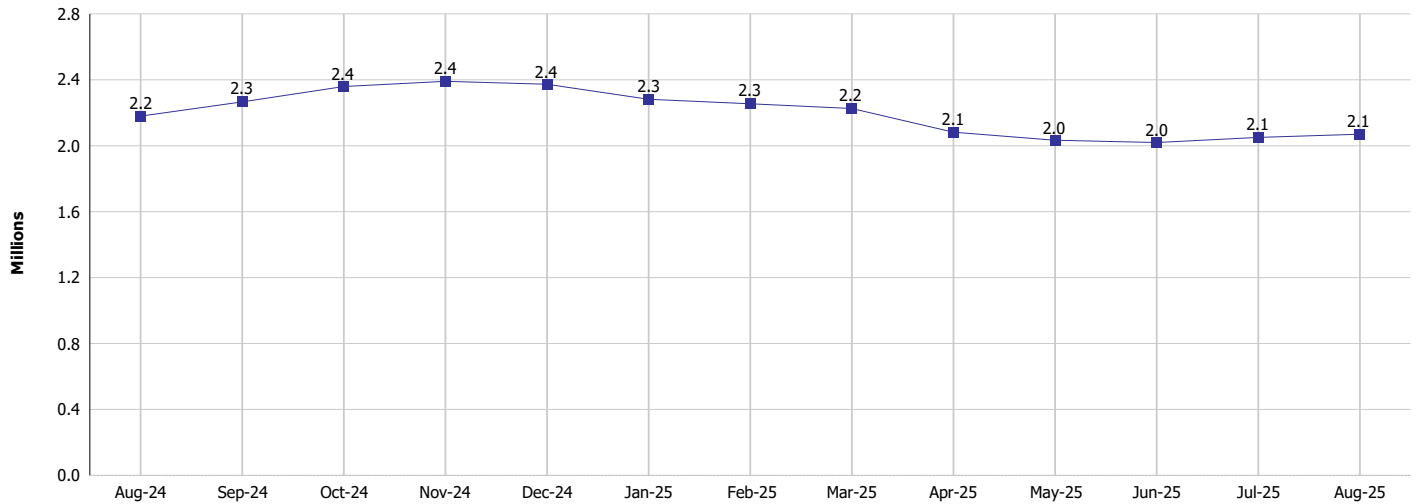
### Monthly Management Report

Reporting Month: August 2025

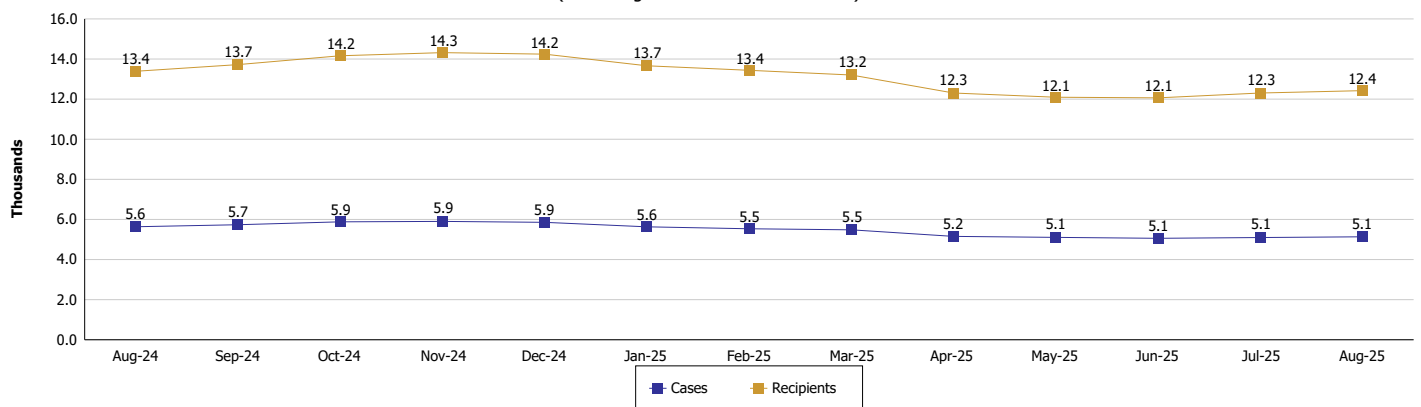
Location: Statewide

#### TEMPORARY ASSISTANCE FOR NEEDY FAMILIES (TANF)

**TANF Cash Assistance**  
(TANF Regular and TANF Two-Parent)



**TANF Cases and Recipients**  
(TANF Regular and TANF Two-Parent)





**DIVISION OF FAMILY RESOURCES**

**Monthly Management Report**

Reporting Month: August 2025	Location: Statewide
SUPPLEMENTAL NUTRITION ASSISTANCE PROGRAM (SNAP)	

	August 2025	July 2025	August 2024	Annual Change
Total issuance	\$111,489,124	\$112,866,837	\$123,183,758	-9.49%
Number of households receiving SNAP benefits	273,964	275,966	292,989	-6.49%
Number of recipients	572,388	577,054	612,555	-6.56%
Average issuance per household	\$406.95	\$408.99	\$420.44	-3.21%
Average issuance per recipient	\$194.78	\$195.59	\$201.10	-3.14%
Number of Applications	37,270	38,305	43,594	-14.51%



## DIVISION OF FAMILY RESOURCES

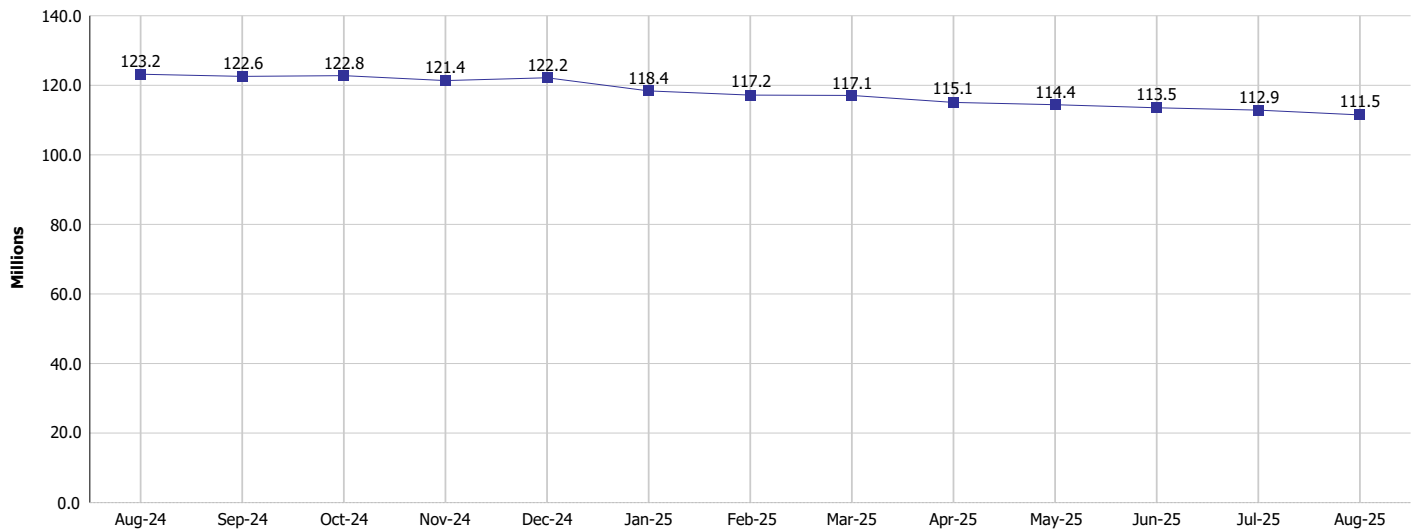
### Monthly Management Report

Reporting Month: August 2025

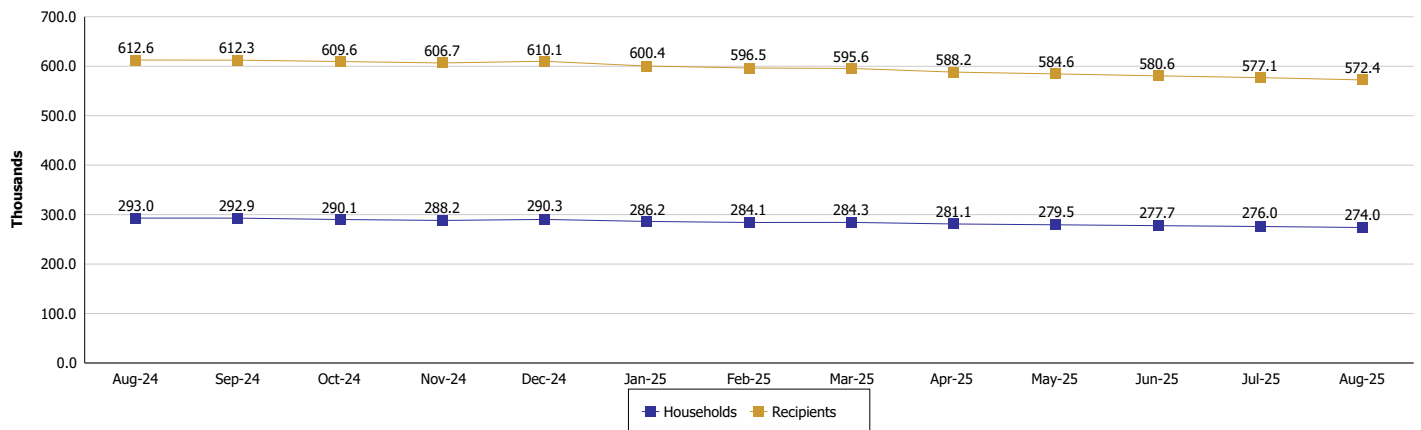
Location: Statewide

#### SUPPLEMENTAL NUTRITION ASSISTANCE PROGRAM (SNAP)

##### SNAP Issuance



##### SNAP Households and Recipients





## DIVISION OF FAMILY RESOURCES

### Monthly Management Report

Reporting Month: August 2025

Location: Statewide

#### HIP 2.0 and SNAP

	August 2025	July 2025	August 2024	Annual Change
Total HIP 2.0 Members	654,320	674,060	755,994	-13.45%
HIP Members also SNAP Recipients	168,926	170,785	184,386	-8.38%
Percentage HIP Members SNAP Recipients	25.8%	25.3%	24.4%	1.43
HIP Members SNAP ABAWDs	4,393	4,413	11,052	-60.25%
Percentage HIP Members SNAP ABAWDs	0.7%	0.7%	1.5%	-0.8





## DIVISION OF FAMILY RESOURCES

### Monthly Management Report

Reporting Month: August 2025

Location: Statewide

#### INDIANA MANPOWER PLACEMENT AND COMPREHENSIVE TRAINING (IMPACT)

	August 2025	July 2025	August 2024	Annual Change
Number of IMPACT cases	706	644	474	48.95%
Number of TANF IMPACT adults	255	228	166	53.61%
Number of SNAP IMPACT Cases	451	416	308	46.43%
Total number of adults employed	1,375	1,476	1,629	-15.59%
Number of TANF IMPACT adults newly employed (within past 30 days)	61	68	75	-18.67%
Number of SNAP IMPACT adults employed	1,314	1,408	1,554	-15.44%
Total number of adults ineligible due to employment	2,114	2,141	1,686	25.39%
Number of TANF adults ineligible due to employment	70	58	99	-29.29%
Number of SNAP adults ineligible due to employment	2,044	2,083	1,587	28.80%

**IMPACT Caseloads**  
(SNAP, TANF, Total Caseload)

