



## DIVISION OF FAMILY RESOURCES

# Randolph County Monthly Management Report March 2026

### State of Indiana

Mike Braun  
Governor

### Family and Social Services Administration

Mitch Roob  
Secretary

### Division of Family Resources

Sunshine Beam  
Director

For questions regarding data on this report contact:  
[office.Communications@fssa.IN.gov](mailto:office.Communications@fssa.IN.gov)



## State of Indiana

Published April 2026



## DIVISION OF FAMILY RESOURCES

### Monthly Management Report

**Reporting Month: March 2026**

**Location: Randolph County**

#### TEMPORARY ASSISTANCE FOR NEEDY FAMILIES (TANF)

Child-Only and One-Parent Families	March 2026	February 2026	March 2025	Annual Change
Number of families receiving TANF Grants	15	17	14	7.14%
Total number of grant recipients	32	37	28	14.29%
Number of adult grant recipients	3	4	3	0.00%
Number of child grant recipients	29	33	25	16.00%
Total payments	\$5,439	\$6,434	\$5,498	-1.07%
Average payment per case	\$362.60	\$378.47	\$392.71	-7.67%
Average payment per recipient	\$169.97	\$173.89	\$196.36	-13.44%
Number of cases with benefits reduced to zero	0	0	0	0%
Number of recipients with benefits reduced to zero	0	0	0	0%
Number of adult recipients with benefit reduced to zero	0	0	0	0%
Number of child recipients with benefit reduced to zero	0	0	0	0%

Pregnancy TANF Families	March 2026	February 2026	March 2025	Annual Change
Number of families receiving TANF Grants	0	0	0	0%
Total number of grant recipients	0	0	0	0%
Total payments	\$0.00	\$0.00	\$0.00	0%
Average payment per case	\$0.00	\$0.00	\$0.00	0.00%
Average payment per recipient	\$0.00	\$0.00	\$0.00	0.00%
Number of cases with benefits reduced to zero	0	0	0	0%
Number of recipients with benefits reduced to zero	0	0	0	0%



## DIVISION OF FAMILY RESOURCES

### Monthly Management Report

Two-Parent Families	March 2026	February 2026	March 2025	Annual Change
Number of families receiving TANF Grants	0	0	0	0%
Total number of grant recipients	0	0	0	0%
Number of adult grant recipients	0	0	0	0%
Number of child grant recipients	0	0	0	0%
Total payments	\$0	\$0	\$0	0%
Average payment per case	\$0.00	\$0.00	\$0.00	0.00%
Average payment per recipient	\$0.00	\$0.00	\$0.00	0.00%
Number of cases with benefits reduced to zero	0	0	0	0%
Number of recipients with benefits reduced to zero	0	0	0	0%
Number of adult recipients with benefit reduced to zero	0	0	0	0%
Number of child recipients with benefit reduced to zero	0	0	0	0%

Note: The two-parent case count includes cases in which a parent living in the home is excluded from receiving TANF benefits but whose income is used in the TANF eligibility determination.



## DIVISION OF FAMILY RESOURCES

### Monthly Management Report

Reporting Month: March 2026

Location: Randolph County

#### TANF - APPLICATIONS

	March 2026	February 2026	March 2025	Annual Change
<b>Number of Applications</b>	16	11	22	-27.27%

#### TANF - RECIPIENTS BY ZIP CODE

ZIP Code	Households	Recipients
47340	3	13
47368	1	1
47390	5	9
47394	6	9
<b>Total</b>	<b>15</b>	<b>32</b>



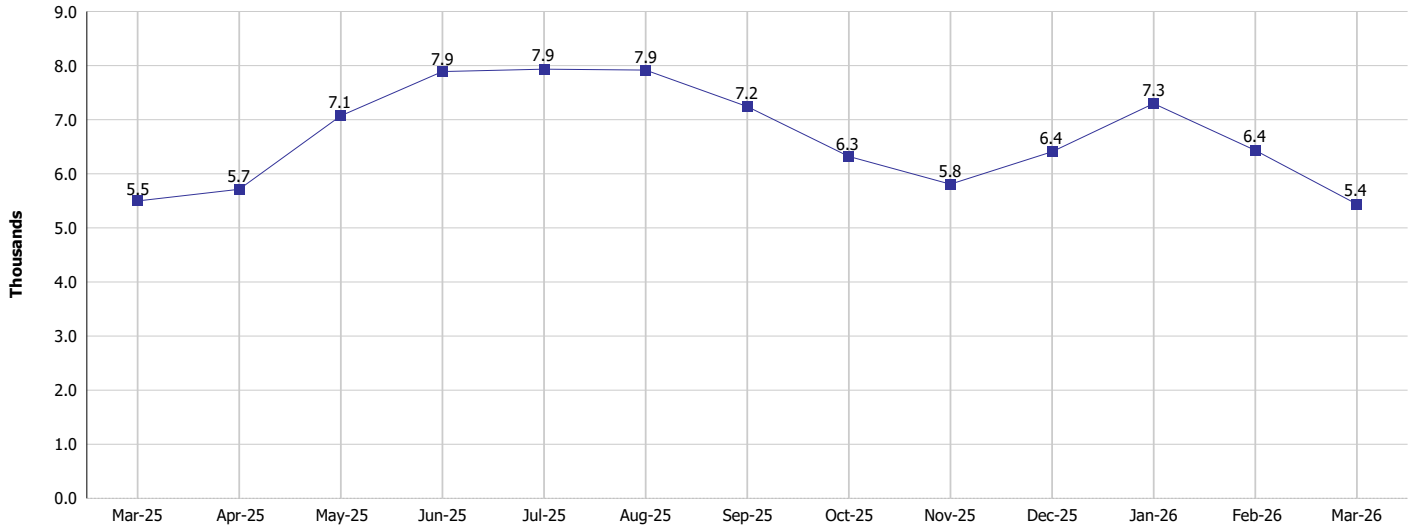
# DIVISION OF FAMILY RESOURCES

## Monthly Management Report

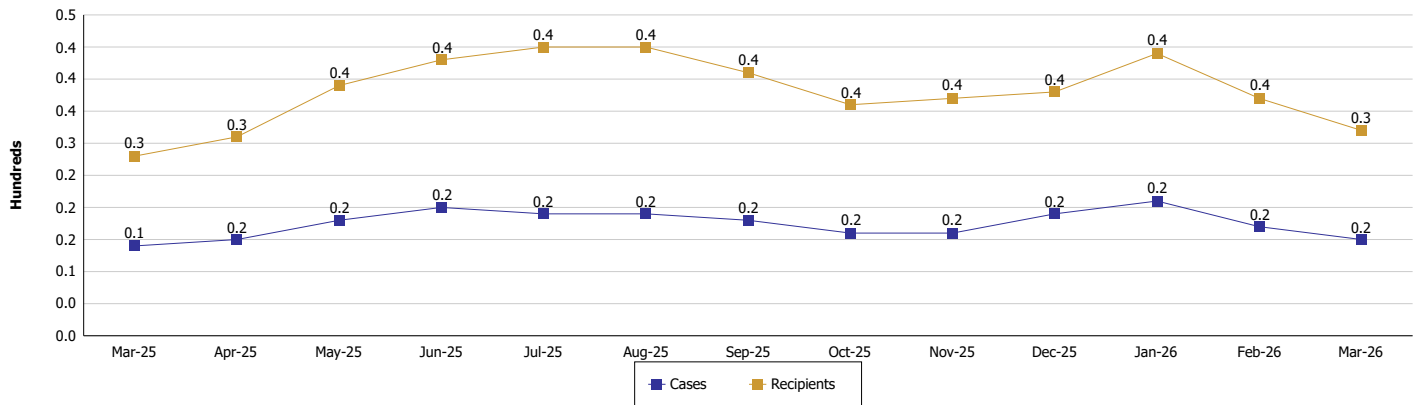
Reporting Month: March 2026 Location: Randolph County

### TEMPORARY ASSISTANCE FOR NEEDY FAMILIES (TANF)

TANF Regular And TANF Two-Parent Cash Assistance



TANF Cases and Recipients  
(TANF Regular and TANF Two-Parent)





**DIVISION OF FAMILY RESOURCES**

**Monthly Management Report**

Reporting Month: March 2026

Location: Randolph County

**SUPPLEMENTAL NUTRITION ASSISTANCE PROGRAM (SNAP)**

	March 2026	February 2026	March 2025	Annual Change
Total issuance	\$425,625	\$425,392	\$473,568	-10.12%
Number of households receiving SNAP benefits	1,044	1,046	1,167	-10.54%
Number of recipients	2,264	2,274	2,526	-10.37%
Average issuance per household	\$407.69	\$406.68	\$405.8	0.47%
Average issuance per recipient	\$188	\$187.07	\$187.48	0.28%
Number of Applications	94	97	107	-12.15%



## DIVISION OF FAMILY RESOURCES

### Monthly Management Report

Reporting Month: March 2026 Location: Randolph County

#### SNAP - RECIPIENTS BY ZIP CODE

ZIP Code	Households	Recipients
46952	1	1
46953	1	1
47302	1	4
47303	1	2
47305	1	1
47320	10	13
47331	1	1
47340	102	240
47354	26	35
47355	83	186
47358	26	70
47362	1	1
47368	71	189
47373	7	13
47374	2	2
47380	82	180
47382	12	20
47390	219	480
47393	4	6
47394	391	813
None	2	6
<b>Totals</b>	<b>1,044</b>	<b>2,264</b>



# DIVISION OF FAMILY RESOURCES

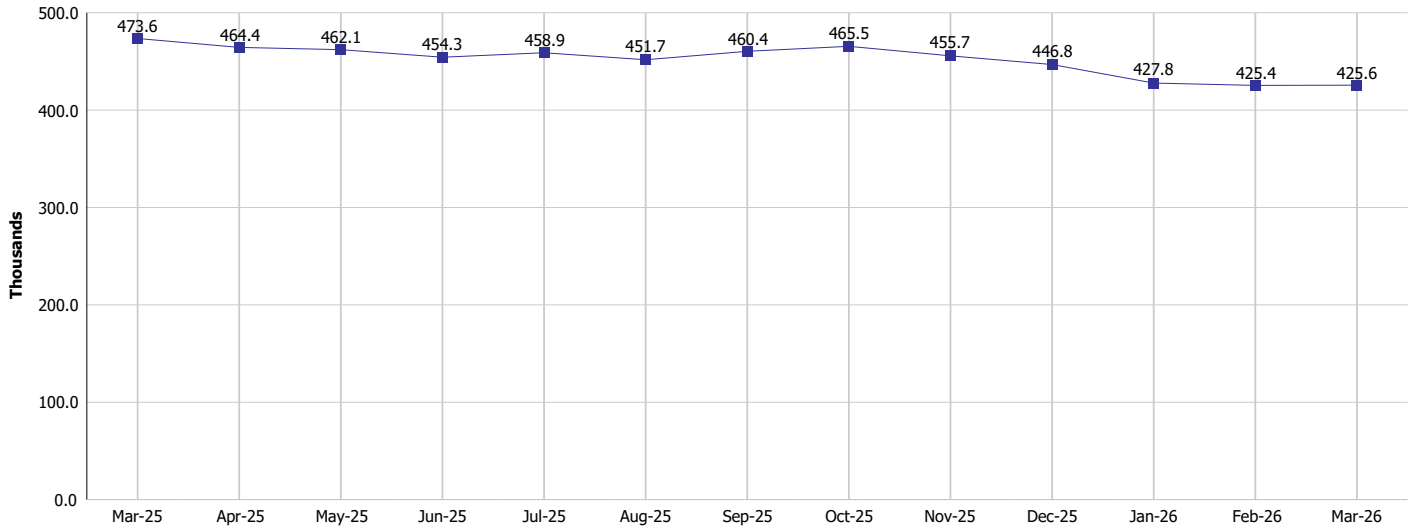
## Monthly Management Report

Reporting Month: March 2026

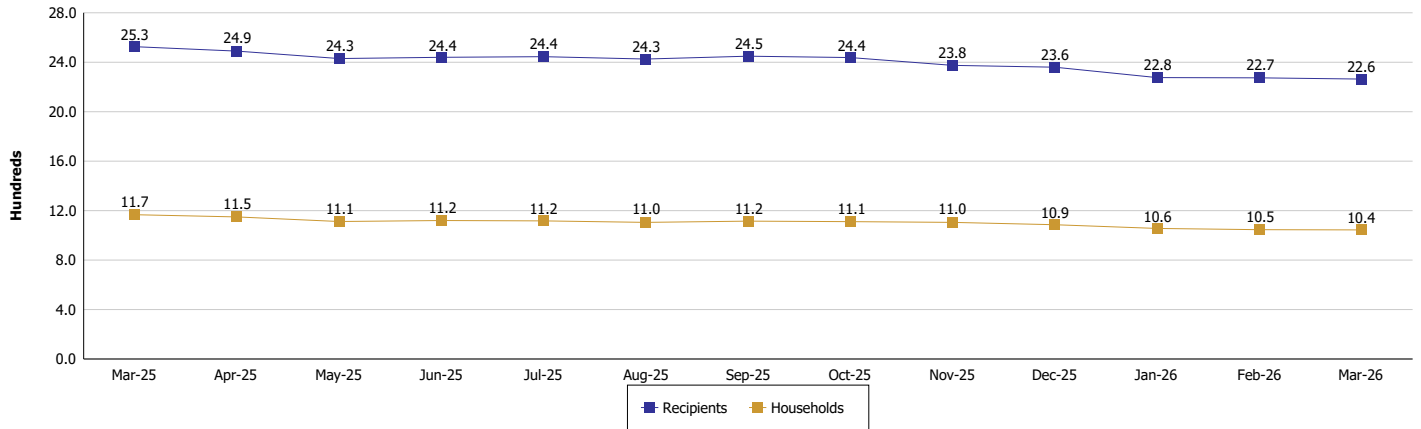
Location: Randolph County

### SUPPLEMENTAL NUTRITION ASSISTANCE PROGRAM (SNAP)

#### SNAP Issuance



#### SNAP Households and Recipients





## DIVISION OF FAMILY RESOURCES

### Monthly Management Report

Reporting Month: March 2026

Location: Randolph County

#### HIP 2.0 and SNAP

	March 2026	February 2026	March 2025	Annual Change
Total HIP 2.0 Members	2,362	2,395	2,981	-20.76%
HIP Members also SNAP Recipients	677	679	803	-15.69%
Percentage HIP Members SNAP Recipients	28.7%	28.4%	26.9%	1.72
HIP Members SNAP ABAWDs	62	56	19	226.32%
Percentage HIP Members SNAP ABAWDs	2.6%	2.3%	0.6%	2.0



## DIVISION OF FAMILY RESOURCES

### Monthly Management Report

Reporting Month: March 2026

Location: Randolph County

#### INDIANA MANPOWER PLACEMENT AND COMPREHENSIVE TRAINING (IMPACT)

	March 2026	February 2026	March 2025	Annual Change
Number of IMPACT cases	1	1	3	-66.67%
Number of TANF IMPACT adults	0	0	1	-100.00%
Number of SNAP IMPACT Cases	1	1	2	-50.00%
Total number of adults employed	4	11	2	100.00%
Number of TANF IMPACT adults newly employed (within past 30 days)	0	0	0	
Number of SNAP IMPACT adults employed	4	11	2	100.00%
Total number of adults ineligible due to employment	8	3	6	33.33%
Number of TANF adults ineligible due to employment	0	0	0	
Number of SNAP adults ineligible due to employment	8	3	6	33.33%

**IMPACT Caseloads**  
(SNAP, TANF, Total Caseload)

