



## DIVISION OF FAMILY RESOURCES

# Pike County Monthly Management Report March 2026

### State of Indiana

Mike Braun  
Governor

### Family and Social Services Administration

Mitch Roob  
Secretary

### Division of Family Resources

Sunshine Beam  
Director

For questions regarding data on this report contact:  
[office.Communications@fssa.IN.gov](mailto:office.Communications@fssa.IN.gov)



## State of Indiana

Published April 2026



## DIVISION OF FAMILY RESOURCES

### Monthly Management Report

Reporting Month: March 2026

Location: Pike County

#### TEMPORARY ASSISTANCE FOR NEEDY FAMILIES (TANF)

Child-Only and One-Parent Families	March 2026	February 2026	March 2025	Annual Change
Number of families receiving TANF Grants	5	6	11	-54.55%
Total number of grant recipients	10	12	23	-56.52%
Number of adult grant recipients	0	1	6	-100.00%
Number of child grant recipients	10	11	17	-41.18%
Total payments	\$1,546	\$1,836	\$4,336	-64.35%
Average payment per case	\$309.20	\$306.00	\$394.18	-21.56%
Average payment per recipient	\$154.60	\$153.00	\$188.52	-17.99%
Number of cases with benefits reduced to zero	0	0	1	-100.00%
Number of recipients with benefits reduced to zero	0	0	1	-100.00%
Number of adult recipients with benefit reduced to zero	0	0	1	-100.00%
Number of child recipients with benefit reduced to zero	0	0	0	0%

Pregnancy TANF Families	March 2026	February 2026	March 2025	Annual Change
Number of families receiving TANF Grants	0	0	0	0%
Total number of grant recipients	0	0	0	0%
Total payments	\$0.00	\$0.00	\$0.00	0%
Average payment per case	\$0.00	\$0.00	\$0.00	0.00%
Average payment per recipient	\$0.00	\$0.00	\$0.00	0.00%
Number of cases with benefits reduced to zero	0	0	0	0%
Number of recipients with benefits reduced to zero	0	0	0	0%



## DIVISION OF FAMILY RESOURCES

### Monthly Management Report

Two-Parent Families	March 2026	February 2026	March 2025	Annual Change
Number of families receiving TANF Grants	0	0	1	-100.00%
Total number of grant recipients	0	0	3	-100.00%
Number of adult grant recipients	0	0	2	-100.00%
Number of child grant recipients	0	0	1	-100.00%
Total payments	\$0	\$0	\$513	-100.00%
Average payment per case	\$0.00	\$0.00	\$513.00	-100.00%
Average payment per recipient	\$0.00	\$0.00	\$171.00	-100.00%
Number of cases with benefits reduced to zero	0	0	0	0%
Number of recipients with benefits reduced to zero	0	0	0	0%
Number of adult recipients with benefit reduced to zero	0	0	0	0%
Number of child recipients with benefit reduced to zero	0	0	0	0%

Note: The two-parent case count includes cases in which a parent living in the home is excluded from receiving TANF benefits but whose income is used in the TANF eligibility determination.



## DIVISION OF FAMILY RESOURCES

### Monthly Management Report

Reporting Month: March 2026

Location: Pike County

#### TANF - APPLICATIONS

	March 2026	February 2026	March 2025	Annual Change
<b>Number of Applications</b>	29	21	16	81.25%

#### TANF - RECIPIENTS BY ZIP CODE

ZIP Code	Households	Recipients
47542	1	4
47567	1	2
47590	1	1
47598	2	3
<b>Total</b>	<b>5</b>	<b>10</b>



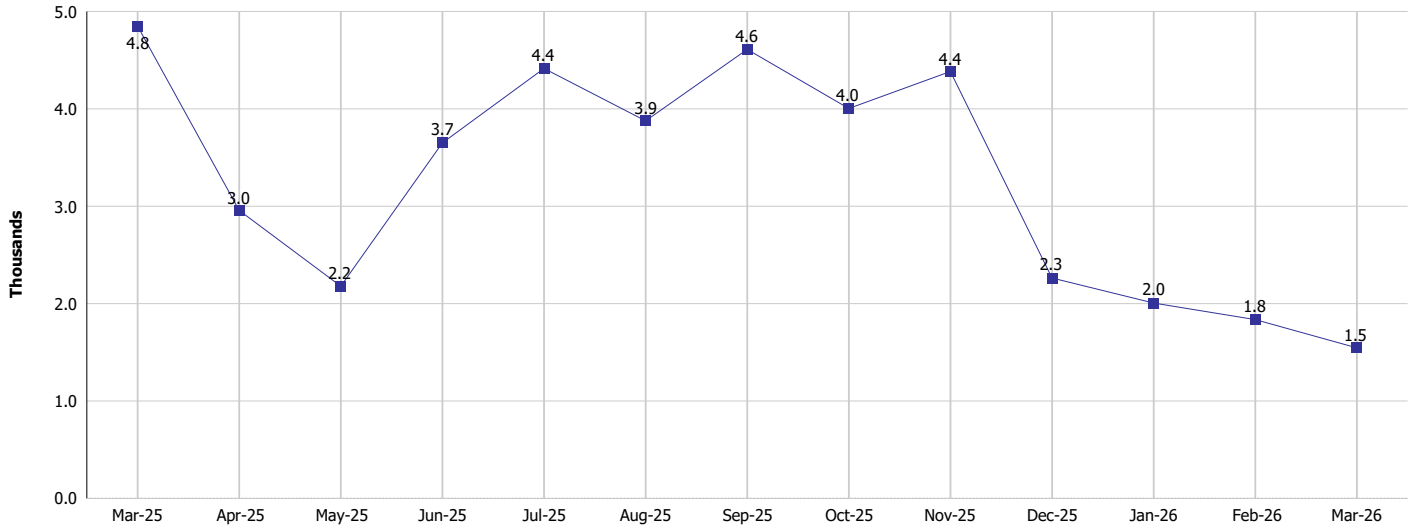
# DIVISION OF FAMILY RESOURCES

## Monthly Management Report

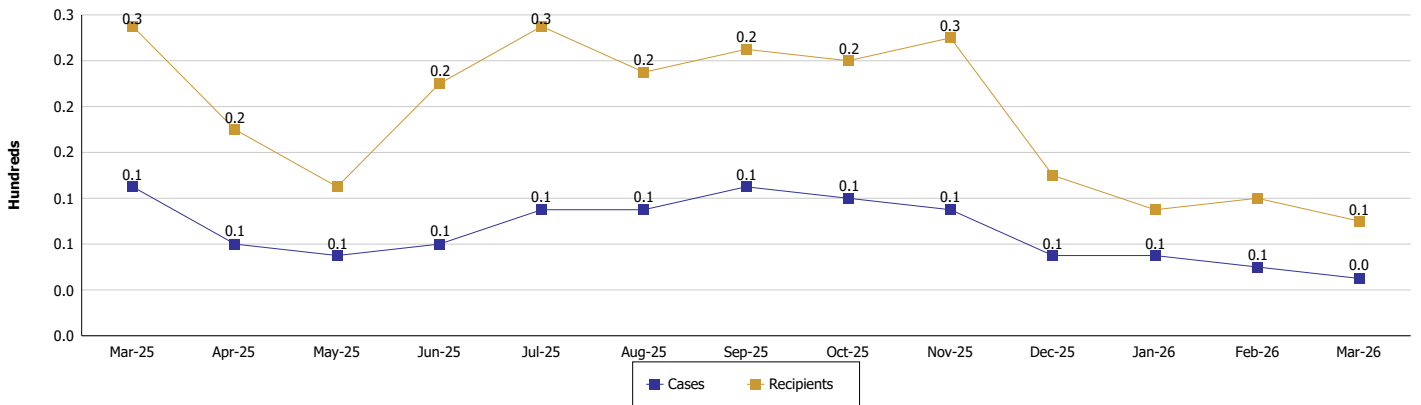
Reporting Month: March 2026 Location: Pike County

### TEMPORARY ASSISTANCE FOR NEEDY FAMILIES (TANF)

**TANF Regular And TANF Two-Parent Cash Assistance**



**TANF Cases and Recipients**  
(TANF Regular and TANF Two-Parent)





**DIVISION OF FAMILY RESOURCES**

**Monthly Management Report**

Reporting Month: March 2026

Location: Pike County

**SUPPLEMENTAL NUTRITION ASSISTANCE PROGRAM (SNAP)**

	March 2026	February 2026	March 2025	Annual Change
Total issuance	\$136,090	\$151,275	\$168,946	-19.45%
Number of households receiving SNAP benefits	430	452	486	-11.52%
Number of recipients	796	871	970	-17.94%
Average issuance per household	\$316.49	\$334.68	\$347.63	-8.96%
Average issuance per recipient	\$170.97	\$173.68	\$174.17	-1.84%
Number of Applications	109	62	68	60.29%



## DIVISION OF FAMILY RESOURCES

### Monthly Management Report

Reporting Month: March 2026 Location: Pike County

#### SNAP - RECIPIENTS BY ZIP CODE

ZIP Code	Households	Recipients
46930	1	1
47250	1	1
47501	2	2
47541	1	3
47542	2	6
47564	42	69
47567	213	388
47584	1	5
47585	8	15
47590	8	21
47598	97	208
47640	3	3
47660	10	17
47978	1	1
None	40	56
<b>Totals</b>	<b>430</b>	<b>796</b>



# DIVISION OF FAMILY RESOURCES

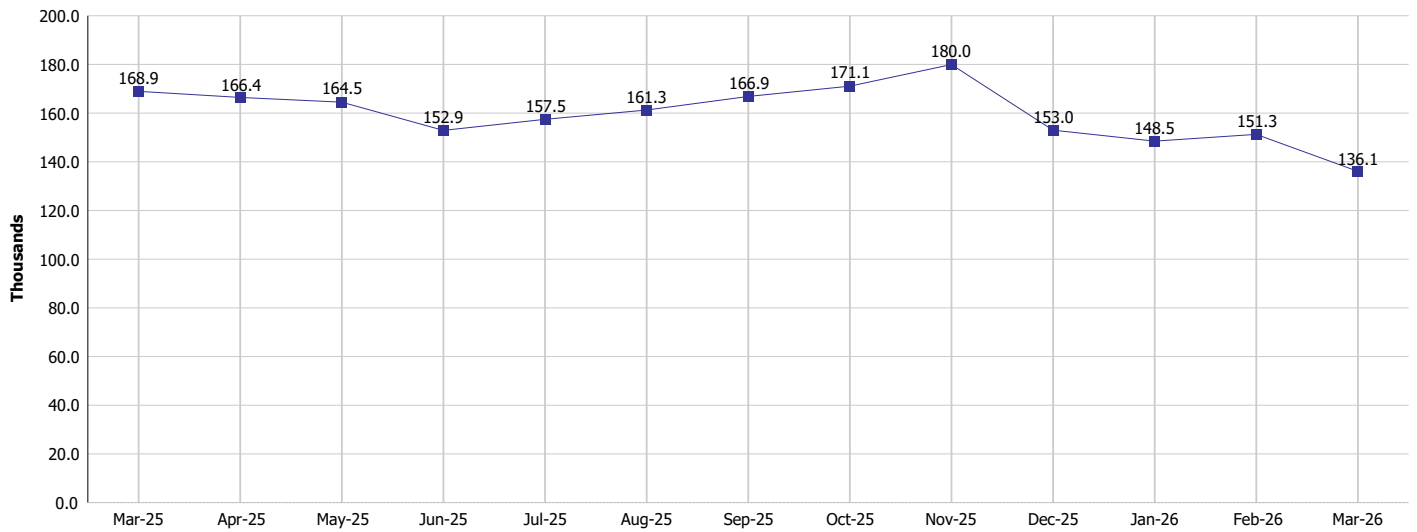
## Monthly Management Report

Reporting Month: March 2026

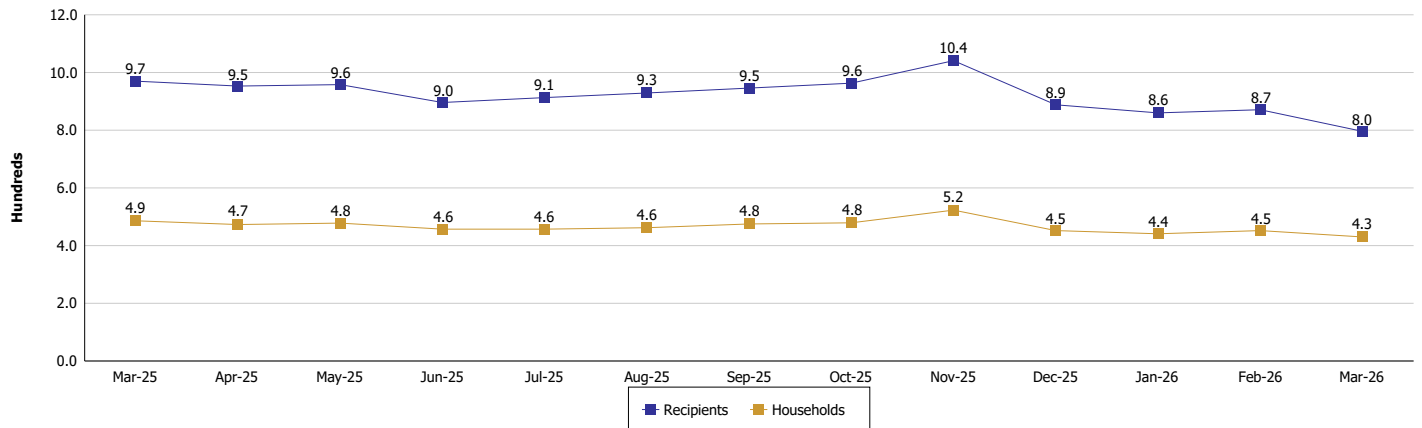
Location: Pike County

### SUPPLEMENTAL NUTRITION ASSISTANCE PROGRAM (SNAP)

#### SNAP Issuance



#### SNAP Households and Recipients





## DIVISION OF FAMILY RESOURCES

### Monthly Management Report

Reporting Month: March 2026

Location: Pike County

#### HIP 2.0 and SNAP

	March 2026	February 2026	March 2025	Annual Change
Total HIP 2.0 Members	1,027	1,091	1,668	-38.43%
HIP Members also SNAP Recipients	255	288	334	-23.65%
Percentage HIP Members SNAP Recipients	24.8%	26.4%	20.0%	4.81
HIP Members SNAP ABAWDs	31	31	11	181.82%
Percentage HIP Members SNAP ABAWDs	3.0%	2.8%	0.7%	2.4



## DIVISION OF FAMILY RESOURCES

### Monthly Management Report

Reporting Month: March 2026

Location: Pike County

#### INDIANA MANPOWER PLACEMENT AND COMPREHENSIVE TRAINING (IMPACT)

	March 2026	February 2026	March 2025	Annual Change
Number of IMPACT cases	2	2	0	
Number of TANF IMPACT adults	0	0	0	
Number of SNAP IMPACT Cases	2	2	0	
Total number of adults employed	4	2	2	100.00%
Number of TANF IMPACT adults newly employed (within past 30 days)	0	0	0	
Number of SNAP IMPACT adults employed	4	2	2	100.00%
Total number of adults ineligible due to employment	3	3	1	200.00%
Number of TANF adults ineligible due to employment	0	0	0	
Number of SNAP adults ineligible due to employment	3	3	1	200.00%

**IMPACT Caseloads**  
(SNAP, TANF, Total Caseload)

