



## DIVISION OF FAMILY RESOURCES

# Owen County Monthly Management Report March 2026

### State of Indiana

Mike Braun  
Governor

### Family and Social Services Administration

Mitch Roob  
Secretary

### Division of Family Resources

Sunshine Beam  
Director

For questions regarding data on this report contact:  
[office.Communications@fssa.IN.gov](mailto:office.Communications@fssa.IN.gov)



## State of Indiana

Published April 2026



## DIVISION OF FAMILY RESOURCES

### Monthly Management Report

Reporting Month: March 2026

Location: Owen County

#### TEMPORARY ASSISTANCE FOR NEEDY FAMILIES (TANF)

Child-Only and One-Parent Families	March 2026	February 2026	March 2025	Annual Change
Number of families receiving TANF Grants	4	5	5	-20.00%
Total number of grant recipients	10	11	14	-28.57%
Number of adult grant recipients	2	3	5	-60.00%
Number of child grant recipients	8	8	9	-11.11%
Total payments	\$1,754	\$2,052	\$2,421	-27.55%
Average payment per case	\$438.50	\$410.40	\$484.20	-9.44%
Average payment per recipient	\$175.40	\$186.55	\$172.93	1.43%
Number of cases with benefits reduced to zero	0	0	0	0%
Number of recipients with benefits reduced to zero	0	0	0	0%
Number of adult recipients with benefit reduced to zero	0	0	0	0%
Number of child recipients with benefit reduced to zero	0	0	0	0%

Pregnancy TANF Families	March 2026	February 2026	March 2025	Annual Change
Number of families receiving TANF Grants	0	0	0	0%
Total number of grant recipients	0	0	0	0%
Total payments	\$0.00	\$0.00	\$0.00	0%
Average payment per case	\$0.00	\$0.00	\$0.00	0.00%
Average payment per recipient	\$0.00	\$0.00	\$0.00	0.00%
Number of cases with benefits reduced to zero	0	0	0	0%
Number of recipients with benefits reduced to zero	0	0	0	0%



## DIVISION OF FAMILY RESOURCES

### Monthly Management Report

Two-Parent Families	March 2026	February 2026	March 2025	Annual Change
Number of families receiving TANF Grants	1	2	3	-66.67%
Total number of grant recipients	2	5	10	-80.00%
Number of adult grant recipients	0	2	4	-100.00%
Number of child grant recipients	2	3	6	-66.67%
Total payments	\$409	\$686	\$1,643	-75.11%
Average payment per case	\$409.00	\$343.00	\$547.67	-25.32%
Average payment per recipient	\$204.50	\$137.20	\$164.30	24.47%
Number of cases with benefits reduced to zero	0	0	0	0%
Number of recipients with benefits reduced to zero	0	0	0	0%
Number of adult recipients with benefit reduced to zero	0	0	0	0%
Number of child recipients with benefit reduced to zero	0	0	0	0%

Note: The two-parent case count includes cases in which a parent living in the home is excluded from receiving TANF benefits but whose income is used in the TANF eligibility determination.



## DIVISION OF FAMILY RESOURCES

### Monthly Management Report

Reporting Month: March 2026

Location: Owen County

#### TANF - APPLICATIONS

	March 2026	February 2026	March 2025	Annual Change
<b>Number of Applications</b>	10	10	11	-9.09%

#### TANF - RECIPIENTS BY ZIP CODE

ZIP Code	Households	Recipients
47456	1	2
47460	3	7
47868	1	3
<b>Total</b>	<b>5</b>	<b>12</b>



# DIVISION OF FAMILY RESOURCES

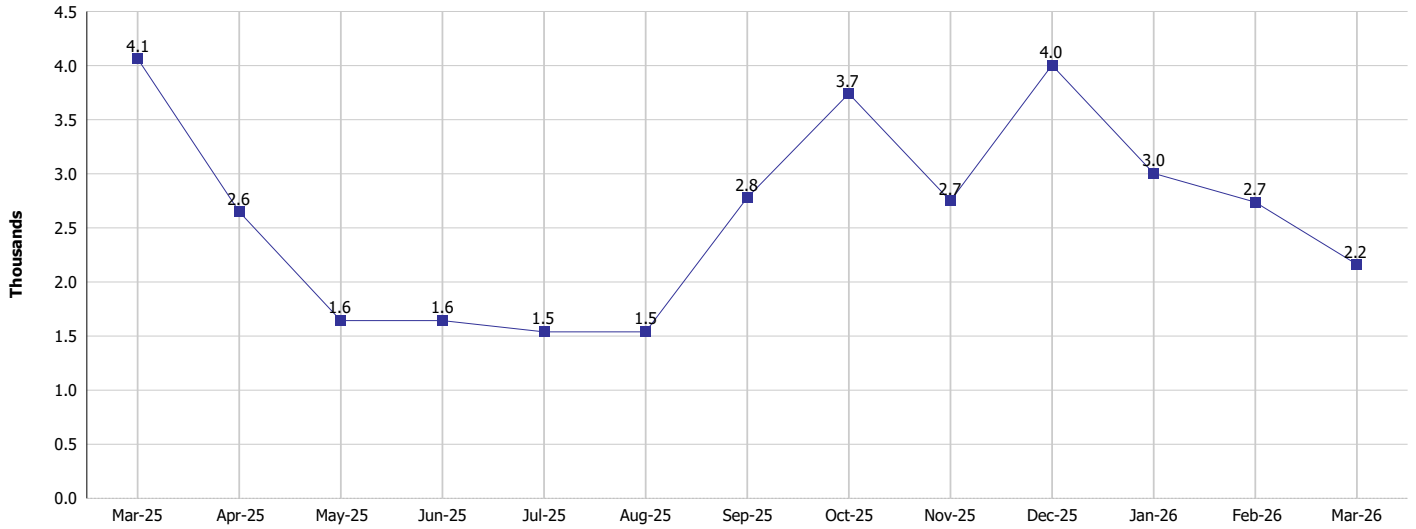
## Monthly Management Report

Reporting Month: March 2026

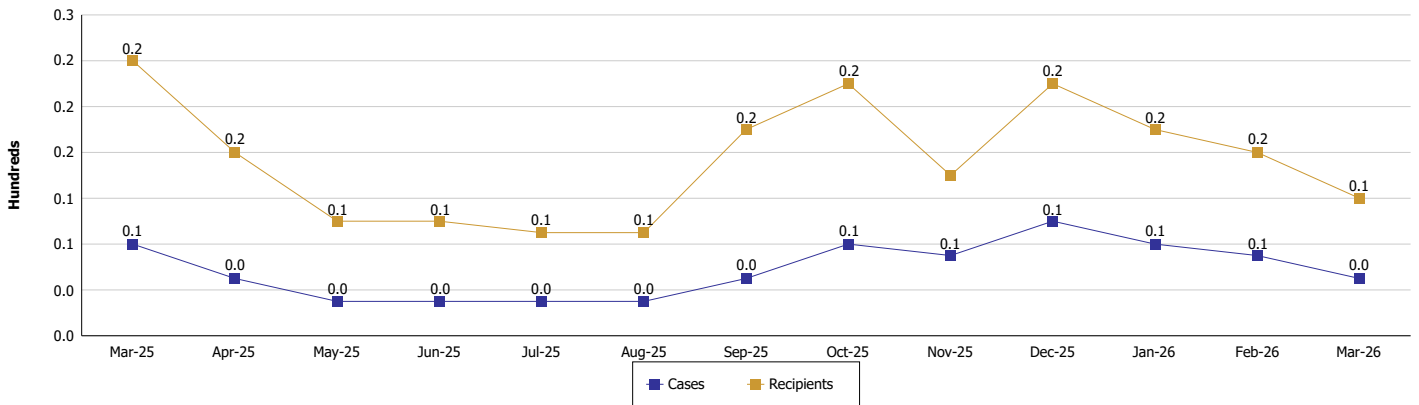
Location: Owen County

### TEMPORARY ASSISTANCE FOR NEEDY FAMILIES (TANF)

#### TANF Regular And TANF Two-Parent Cash Assistance



#### TANF Cases and Recipients (TANF Regular and TANF Two-Parent)





**DIVISION OF FAMILY RESOURCES**

**Monthly Management Report**

Reporting Month: March 2026

Location: Owen County

**SUPPLEMENTAL NUTRITION ASSISTANCE PROGRAM (SNAP)**

	March 2026	February 2026	March 2025	Annual Change
Total issuance	\$341,946	\$351,888	\$388,288	-11.93%
Number of households receiving SNAP benefits	879	888	975	-9.85%
Number of recipients	1,776	1,811	1,984	-10.48%
Average issuance per household	\$389.02	\$396.27	\$398.24	-2.32%
Average issuance per recipient	\$192.54	\$194.31	\$195.71	-1.62%
Number of Applications	89	87	86	3.49%



## DIVISION OF FAMILY RESOURCES

### Monthly Management Report

Reporting Month: March 2026 Location: Owen County

#### SNAP - RECIPIENTS BY ZIP CODE

ZIP Code	Households	Recipients
46038	1	3
46120	40	77
46143	1	2
46166	9	19
46171	1	1
46222	1	1
47404	2	8
47427	46	113
47429	1	1
47431	44	100
47433	112	232
47455	13	22
47456	26	54
47459	6	20
47460	399	789
47471	10	16
47804	1	2
47833	27	59
47868	138	256
None	1	1
<b>Totals</b>	<b>879</b>	<b>1,776</b>



## DIVISION OF FAMILY RESOURCES

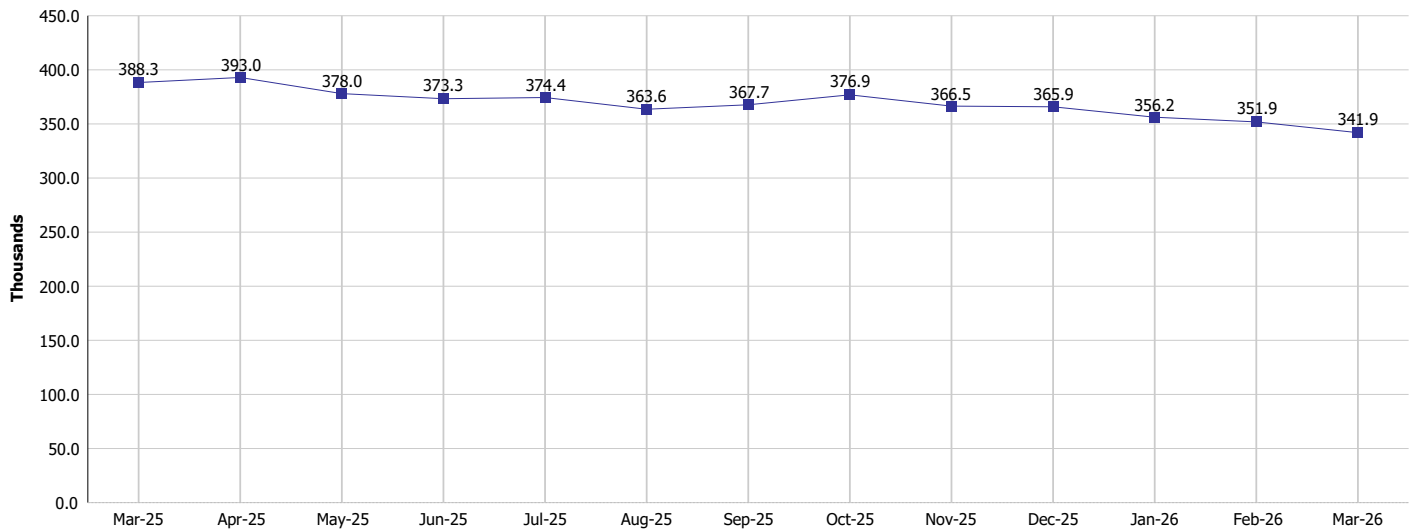
### Monthly Management Report

Reporting Month: March 2026

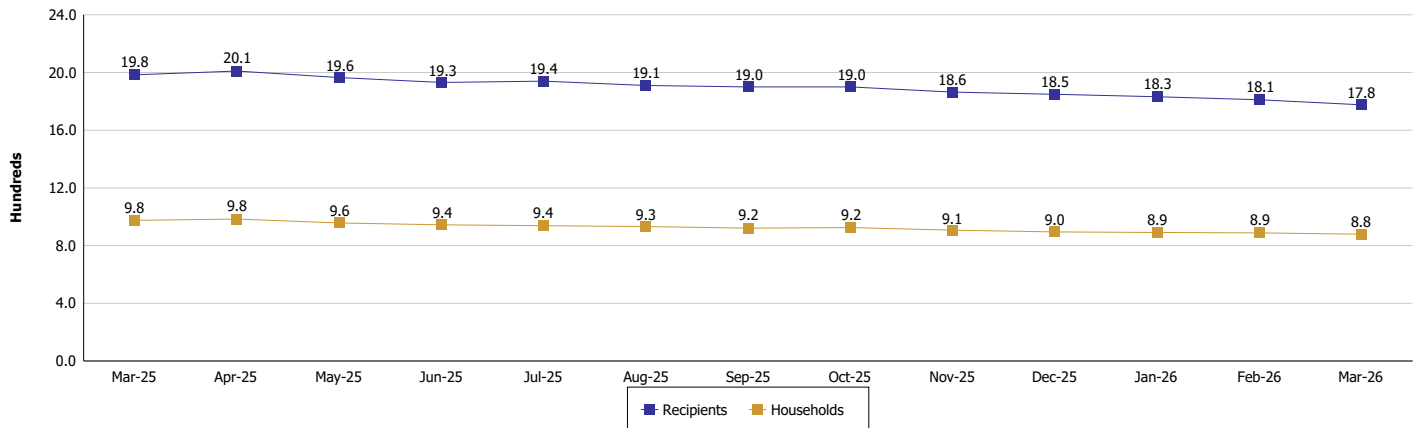
Location: Owen County

#### SUPPLEMENTAL NUTRITION ASSISTANCE PROGRAM (SNAP)

SNAP Issuance



SNAP Households and Recipients





## DIVISION OF FAMILY RESOURCES

### Monthly Management Report

Reporting Month: March 2026

Location: Owen County

#### HIP 2.0 and SNAP

	March 2026	February 2026	March 2025	Annual Change
Total HIP 2.0 Members	1,977	2,004	2,575	-23.22%
HIP Members also SNAP Recipients	610	618	748	-18.45%
Percentage HIP Members SNAP Recipients	30.9%	30.8%	29.0%	1.81
HIP Members SNAP ABAWDs	79	73	19	315.79%
Percentage HIP Members SNAP ABAWDs	4.0%	3.6%	0.7%	3.3



## DIVISION OF FAMILY RESOURCES

### Monthly Management Report

Reporting Month: March 2026

Location: Owen County

#### INDIANA MANPOWER PLACEMENT AND COMPREHENSIVE TRAINING (IMPACT)

	March 2026	February 2026	March 2025	Annual Change
Number of IMPACT cases	0	0	0	
Number of TANF IMPACT adults	0	0	0	
Number of SNAP IMPACT Cases	0	0	0	
Total number of adults employed	4	3	4	0.00%
Number of TANF IMPACT adults newly employed (within past 30 days)	0	0	1	-100.00%
Number of SNAP IMPACT adults employed	4	3	3	33.33%
Total number of adults ineligible due to employment	5	1	4	25.00%
Number of TANF adults ineligible due to employment	0	0	0	
Number of SNAP adults ineligible due to employment	5	1	4	25.00%

**IMPACT Caseloads**  
(SNAP, TANF, Total Caseload)

