



DIVISION OF FAMILY RESOURCES

Monroe County Monthly Management Report March 2026

State of Indiana

Mike Braun
Governor

Family and Social Services Administration

Mitch Roob
Secretary

Division of Family Resources

Sunshine Beam
Director

For questions regarding data on this report contact:
office.Communications@fssa.IN.gov



State of Indiana

Published April 2026



DIVISION OF FAMILY RESOURCES

Monthly Management Report

Reporting Month: March 2026

Location: Monroe County

TEMPORARY ASSISTANCE FOR NEEDY FAMILIES (TANF)

Child-Only and One-Parent Families	March 2026	February 2026	March 2025	Annual Change
Number of families receiving TANF Grants	45	45	45	0.00%
Total number of grant recipients	111	113	104	6.73%
Number of adult grant recipients	22	22	23	-4.35%
Number of child grant recipients	89	91	81	9.88%
Total payments	\$18,686	\$19,494	\$18,015	3.72%
Average payment per case	\$415.24	\$433.20	\$400.33	3.72%
Average payment per recipient	\$168.34	\$172.51	\$173.22	-2.82%
Number of cases with benefits reduced to zero	0	1	0	0%
Number of recipients with benefits reduced to zero	0	4	0	0%
Number of adult recipients with benefit reduced to zero	0	1	0	0%
Number of child recipients with benefit reduced to zero	0	3	0	0%

Pregnancy TANF Families	March 2026	February 2026	March 2025	Annual Change
Number of families receiving TANF Grants	2	2	2	0.00%
Total number of grant recipients	2	2	2	0.00%
Total payments	\$496.00	\$496.00	\$496.00	0.00%
Average payment per case	\$248.00	\$248.00	\$248.00	0.00%
Average payment per recipient	\$248.00	\$248.00	\$248.00	0.00%
Number of cases with benefits reduced to zero	0	0	0	0%
Number of recipients with benefits reduced to zero	0	0	0	0%



DIVISION OF FAMILY RESOURCES

Monthly Management Report

Two-Parent Families	March 2026	February 2026	March 2025	Annual Change
Number of families receiving TANF Grants	1	1	8	-87.50%
Total number of grant recipients	4	4	36	-88.89%
Number of adult grant recipients	2	2	16	-87.50%
Number of child grant recipients	2	2	20	-90.00%
Total payments	\$617	\$617	\$4,132	-85.07%
Average payment per case	\$617.00	\$617.00	\$516.50	19.46%
Average payment per recipient	\$154.25	\$154.25	\$114.78	34.39%
Number of cases with benefits reduced to zero	0	0	0	0%
Number of recipients with benefits reduced to zero	0	0	0	0%
Number of adult recipients with benefit reduced to zero	0	0	0	0%
Number of child recipients with benefit reduced to zero	0	0	0	0%

Note: The two-parent case count includes cases in which a parent living in the home is excluded from receiving TANF benefits but whose income is used in the TANF eligibility determination.



DIVISION OF FAMILY RESOURCES

Monthly Management Report

Reporting Month: March 2026

Location: Monroe County

TANF - APPLICATIONS

	March 2026	February 2026	March 2025	Annual Change
Number of Applications	63	65	64	-1.56%

TANF - RECIPIENTS BY ZIP CODE

ZIP Code	Households	Recipients
47401	9	14
47403	19	60
47404	14	35
47408	2	3
47429	2	3
Total	46	115



DIVISION OF FAMILY RESOURCES

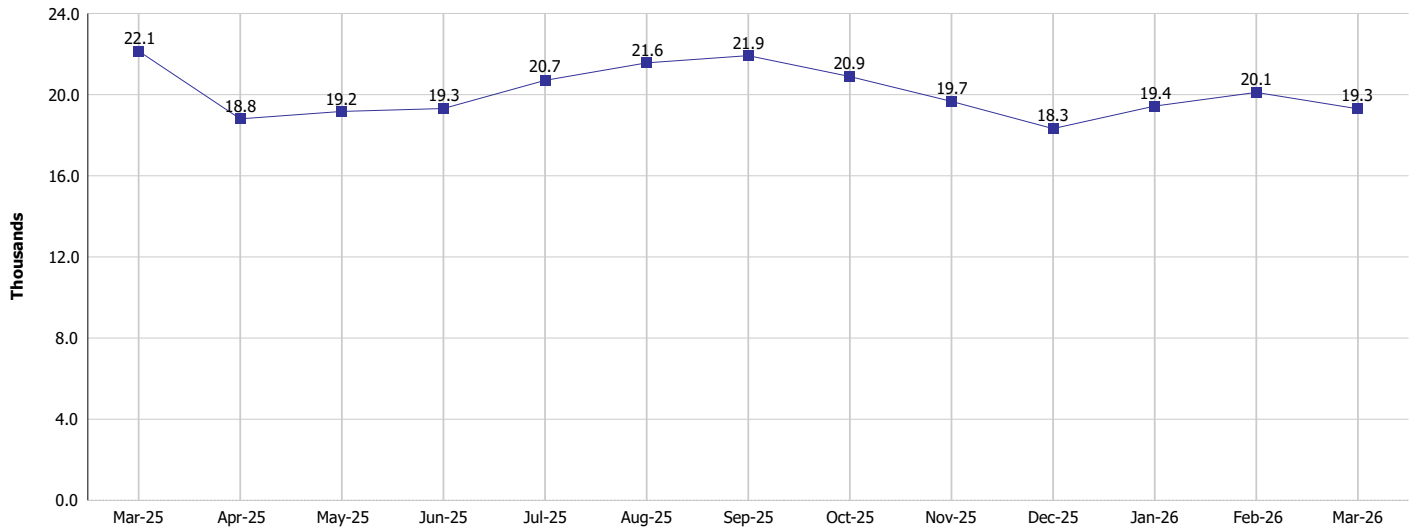
Monthly Management Report

Reporting Month: March 2026

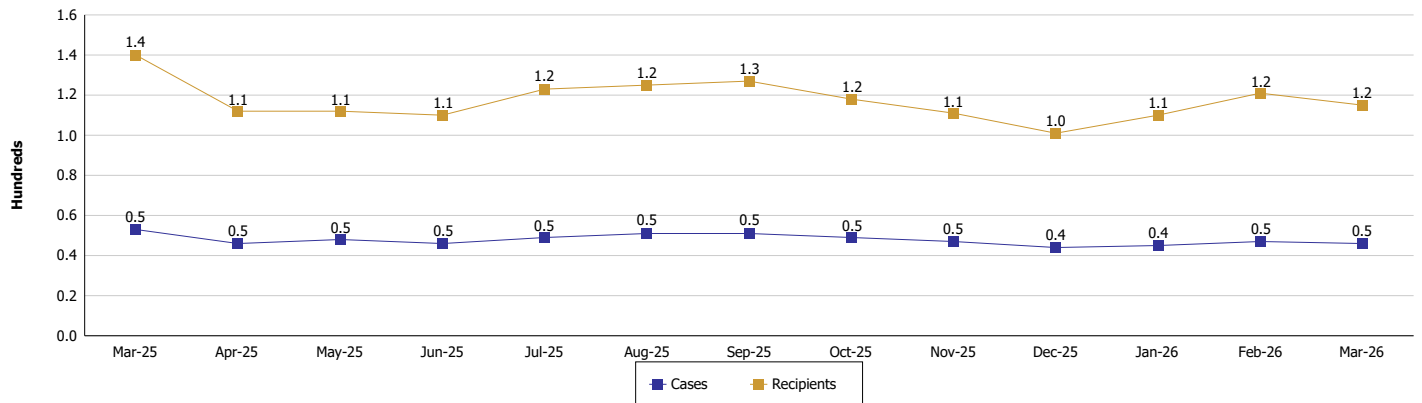
Location: Monroe County

TEMPORARY ASSISTANCE FOR NEEDY FAMILIES (TANF)

TANF Regular And TANF Two-Parent Cash Assistance



TANF Cases and Recipients
(TANF Regular and TANF Two-Parent)





DIVISION OF FAMILY RESOURCES

Monthly Management Report

Reporting Month: March 2026

Location: Monroe County

SUPPLEMENTAL NUTRITION ASSISTANCE PROGRAM (SNAP)

	March 2026	February 2026	March 2025	Annual Change
Total issuance	\$1,363,353	\$1,403,257	\$1,585,471	-14.01%
Number of households receiving SNAP benefits	3,785	3,819	4,284	-11.65%
Number of recipients	6,804	6,884	7,954	-14.46%
Average issuance per household	\$360.2	\$367.44	\$370.09	-2.67%
Average issuance per recipient	\$200.38	\$203.84	\$199.33	0.53%
Number of Applications	530	516	560	-5.36%



DIVISION OF FAMILY RESOURCES

Monthly Management Report

Reporting Month: March 2026 Location: Monroe County

SNAP - RECIPIENTS BY ZIP CODE

ZIP Code	Households	Recipients
46036	1	1
46168	1	4
46202	2	2
46205	1	1
46218	1	1
46219	1	1
46808	1	2
47150	1	1
47170	1	1
47396	1	1
47401	990	1,625
47402	7	12
47403	1,237	2,404
47404	940	1,724
47406	1	1
47408	273	465
47421	5	5
47429	203	355
47433	30	62
47434	7	11
47436	8	15
47446	2	3
47448	3	3
47451	1	1
47458	1	2
47459	2	2
47460	8	11
47462	13	17
47463	1	1
47464	14	20
47468	24	44
47501	1	1
47802	1	1
None	2	4
Totals	3,785	6,804



DIVISION OF FAMILY RESOURCES

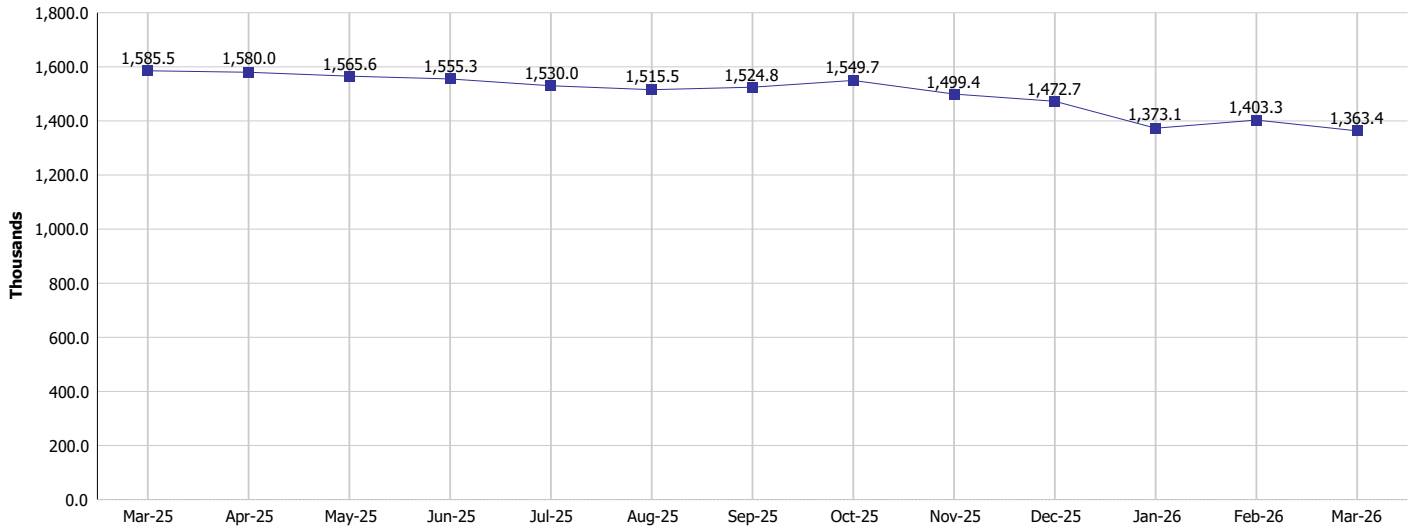
Monthly Management Report

Reporting Month: March 2026

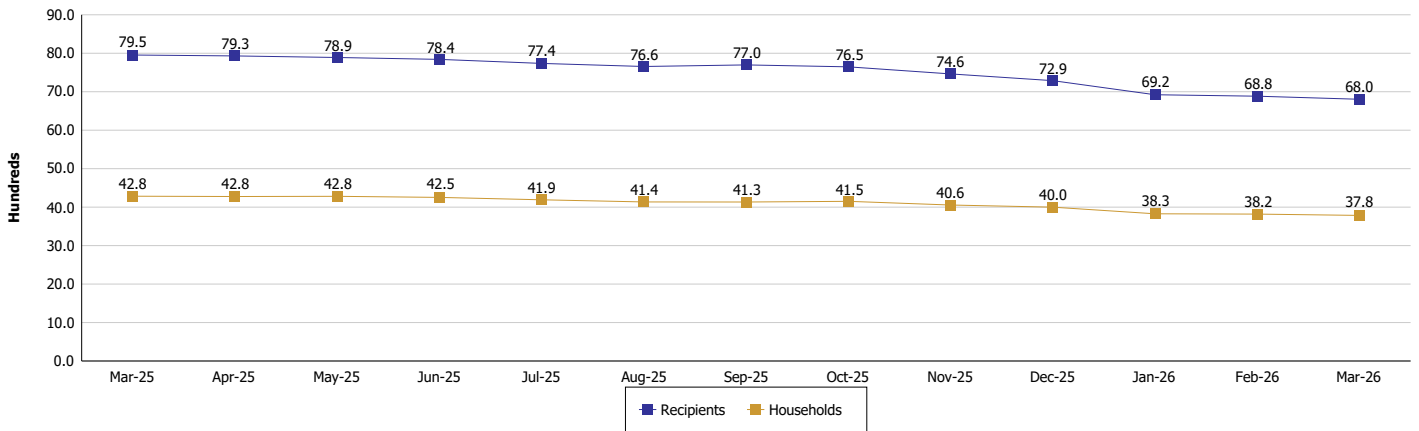
Location: Monroe County

SUPPLEMENTAL NUTRITION ASSISTANCE PROGRAM (SNAP)

SNAP Issuance



SNAP Households and Recipients





DIVISION OF FAMILY RESOURCES

Monthly Management Report

Reporting Month: March 2026

Location: Monroe County

HIP 2.0 and SNAP

	March 2026	February 2026	March 2025	Annual Change
Total HIP 2.0 Members	8,504	8,609	11,250	-24.41%
HIP Members also SNAP Recipients	2,183	2,201	2,752	-20.68%
Percentage HIP Members SNAP Recipients	25.7%	25.6%	24.5%	1.21
HIP Members SNAP ABAWDs	239	238	67	256.72%
Percentage HIP Members SNAP ABAWDs	2.8%	2.8%	0.6%	2.2



DIVISION OF FAMILY RESOURCES

Monthly Management Report

Reporting Month: March 2026

Location: Monroe County

INDIANA MANPOWER PLACEMENT AND COMPREHENSIVE TRAINING (IMPACT)

	March 2026	February 2026	March 2025	Annual Change
Number of IMPACT cases	4	3	0	
Number of TANF IMPACT adults	0	1	0	
Number of SNAP IMPACT Cases	4	2	0	
Total number of adults employed	16	20	19	-15.79%
Number of TANF IMPACT adults newly employed (within past 30 days)	0	1	0	
Number of SNAP IMPACT adults employed	16	19	19	-15.79%
Total number of adults ineligible due to employment	13	14	28	-53.57%
Number of TANF adults ineligible due to employment	1	0	1	0.00%
Number of SNAP adults ineligible due to employment	12	14	27	-55.56%

IMPACT Caseloads
(SNAP, TANF, Total Caseload)

