



DIVISION OF FAMILY RESOURCES

Madison County Monthly Management Report March 2026

State of Indiana

Mike Braun
Governor

Family and Social Services Administration

Mitch Roob
Secretary

Division of Family Resources

Sunshine Beam
Director

For questions regarding data on this report contact:
office.Communications@fssa.IN.gov



State of Indiana

Published April 2026



DIVISION OF FAMILY RESOURCES

Monthly Management Report

Reporting Month: March 2026

Location: Madison County

TEMPORARY ASSISTANCE FOR NEEDY FAMILIES (TANF)

Child-Only and One-Parent Families	March 2026	February 2026	March 2025	Annual Change
Number of families receiving TANF Grants	99	97	121	-18.18%
Total number of grant recipients	213	203	253	-15.81%
Number of adult grant recipients	33	29	43	-23.26%
Number of child grant recipients	180	174	210	-14.29%
Total payments	\$38,431	\$37,180	\$46,391	-17.16%
Average payment per case	\$388.19	\$383.30	\$383.40	1.25%
Average payment per recipient	\$180.43	\$183.15	\$183.36	-1.60%
Number of cases with benefits reduced to zero	4	4	2	100.00%
Number of recipients with benefits reduced to zero	5	5	4	25.00%
Number of adult recipients with benefit reduced to zero	0	0	0	0%
Number of child recipients with benefit reduced to zero	5	5	4	25.00%

Pregnancy TANF Families	March 2026	February 2026	March 2025	Annual Change
Number of families receiving TANF Grants	0	1	1	-100.00%
Total number of grant recipients	0	1	1	-100.00%
Total payments	\$0.00	\$248.00	\$248.00	-100.00%
Average payment per case	\$0.00	\$248.00	\$248.00	-100.00%
Average payment per recipient	\$0.00	\$248.00	\$248.00	-100.00%
Number of cases with benefits reduced to zero	0	0	0	0%
Number of recipients with benefits reduced to zero	0	0	0	0%



DIVISION OF FAMILY RESOURCES

Monthly Management Report

Two-Parent Families	March 2026	February 2026	March 2025	Annual Change
Number of families receiving TANF Grants	4	3	4	0.00%
Total number of grant recipients	17	13	20	-15.00%
Number of adult grant recipients	8	6	8	0.00%
Number of child grant recipients	9	7	12	-25.00%
Total payments	\$2,482	\$1,875	\$2,884	-13.94%
Average payment per case	\$620.50	\$625.00	\$721.00	-13.94%
Average payment per recipient	\$146.00	\$144.23	\$144.20	1.25%
Number of cases with benefits reduced to zero	0	0	0	0%
Number of recipients with benefits reduced to zero	0	0	0	0%
Number of adult recipients with benefit reduced to zero	0	0	0	0%
Number of child recipients with benefit reduced to zero	0	0	0	0%

Note: The two-parent case count includes cases in which a parent living in the home is excluded from receiving TANF benefits but whose income is used in the TANF eligibility determination.



DIVISION OF FAMILY RESOURCES

Monthly Management Report

Reporting Month: March 2026

Location: Madison County

TANF - APPLICATIONS

	March 2026	February 2026	March 2025	Annual Change
Number of Applications	99	113	95	4.21%

TANF - RECIPIENTS BY ZIP CODE

ZIP Code	Households	Recipients
46001	5	15
46011	10	27
46012	21	42
46013	13	31
46016	41	84
46017	1	2
46036	6	13
46044	3	11
46056	1	1
46064	1	2
46070	1	2
Total	103	230



DIVISION OF FAMILY RESOURCES

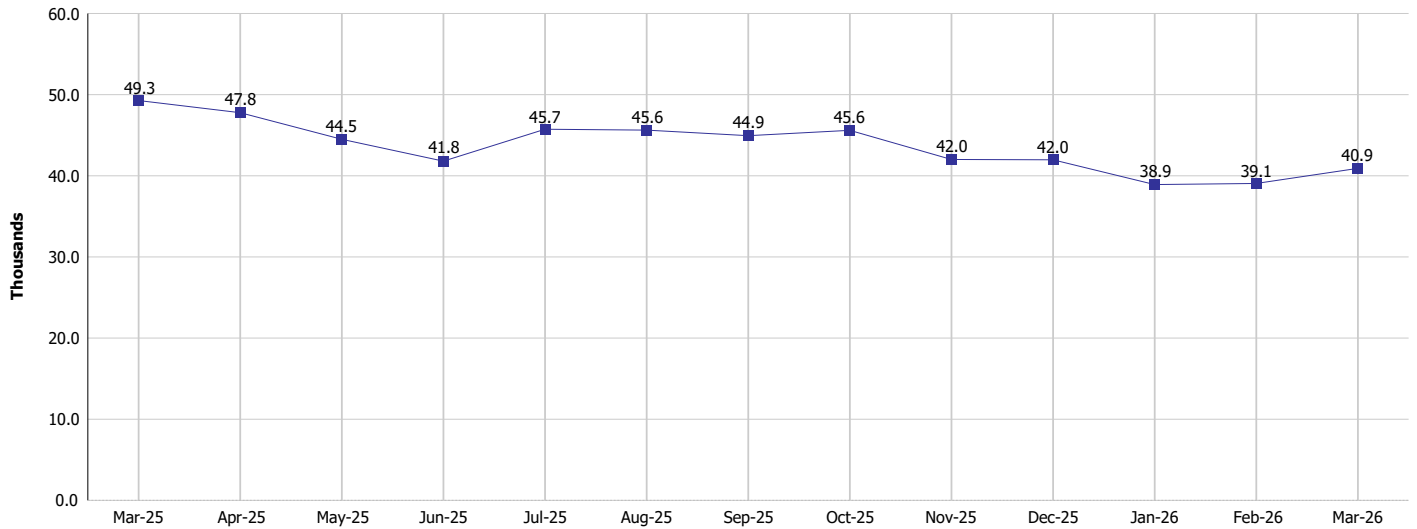
Monthly Management Report

Reporting Month: March 2026

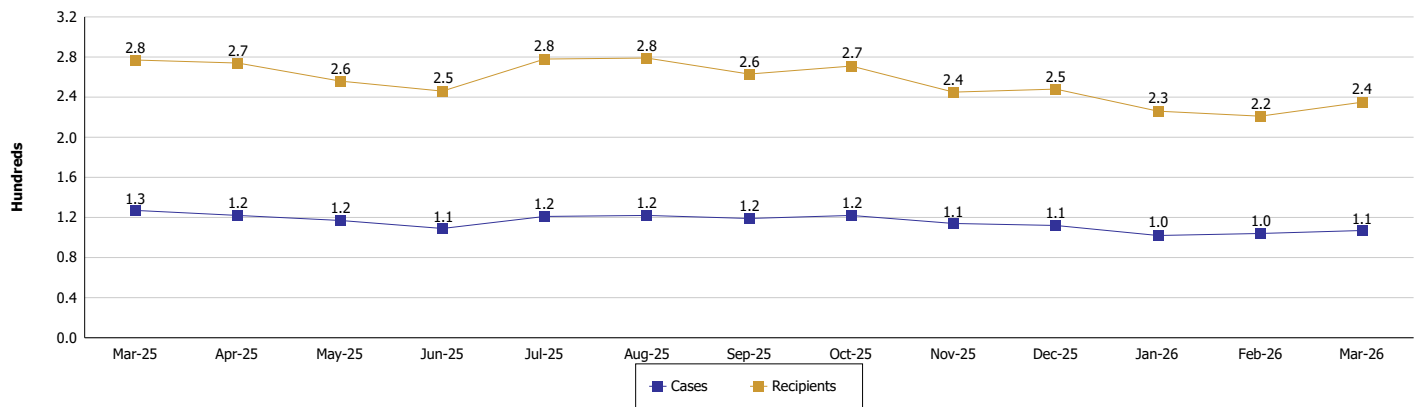
Location: Madison County

TEMPORARY ASSISTANCE FOR NEEDY FAMILIES (TANF)

TANF Regular And TANF Two-Parent Cash Assistance



TANF Cases and Recipients
(TANF Regular and TANF Two-Parent)





DIVISION OF FAMILY RESOURCES

Monthly Management Report

Reporting Month: March 2026

Location: Madison County

SUPPLEMENTAL NUTRITION ASSISTANCE PROGRAM (SNAP)

	March 2026	February 2026	March 2025	Annual Change
Total issuance	\$2,805,924	\$2,837,195	\$3,257,737	-13.87%
Number of households receiving SNAP benefits	7,418	7,511	8,399	-11.68%
Number of recipients	14,076	14,283	16,370	-14.01%
Average issuance per household	\$378.26	\$377.74	\$387.87	-2.48%
Average issuance per recipient	\$199.34	\$198.64	\$199.01	0.17%
Number of Applications	833	762	795	4.78%



DIVISION OF FAMILY RESOURCES

Monthly Management Report

Reporting Month: March 2026 Location: Madison County

SNAP - RECIPIENTS BY ZIP CODE

ZIP Code	Households	Recipients	ZIP Code	Households	Recipients
46001	431	829	47362	2	2
46011	581	1,246	47384	1	3
46012	1,076	2,042	47396	1	3
46013	1,213	2,287	47512	1	1
46015	2	2	47520	1	1
46016	2,692	4,830	None	4	4
46017	223	431	Totals	7,418	14,076
46018	4	7			
46036	604	1,185			
46040	20	35			
46044	58	118			
46048	49	107			
46051	47	110			
46056	51	108			
46063	19	38			
46064	215	439			
46070	77	175			
46072	1	1			
46076	1	1			
46113	1	1			
46140	1	5			
46148	1	1			
46202	2	2			
46205	1	1			
46208	1	1			
46214	1	1			
46218	1	1			
46219	1	1			
46221	3	4			
46222	1	1			
46226	1	1			
46256	1	1			
46601	1	1			
46802	1	1			
46902	1	5			
46928	7	18			
46953	3	5			
46991	1	1			
47130	2	2			
47150	1	1			
47170	1	1			
47201	1	1			
47302	2	2			
47303	2	2			
47305	1	2			
47356	4	8			



DIVISION OF FAMILY RESOURCES

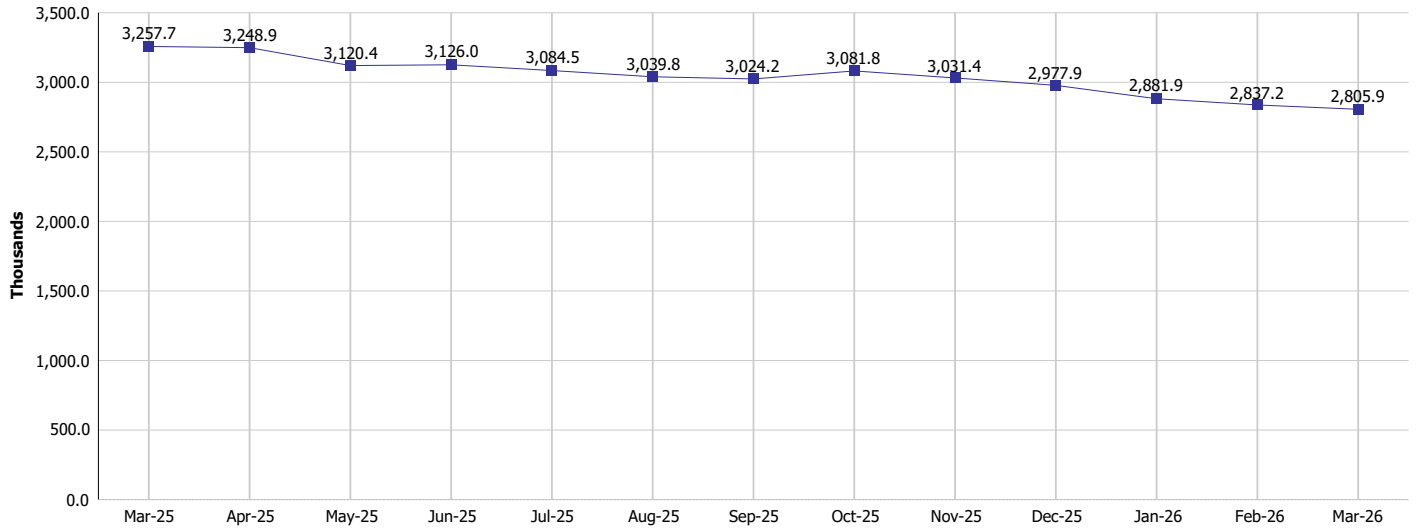
Monthly Management Report

Reporting Month: March 2026

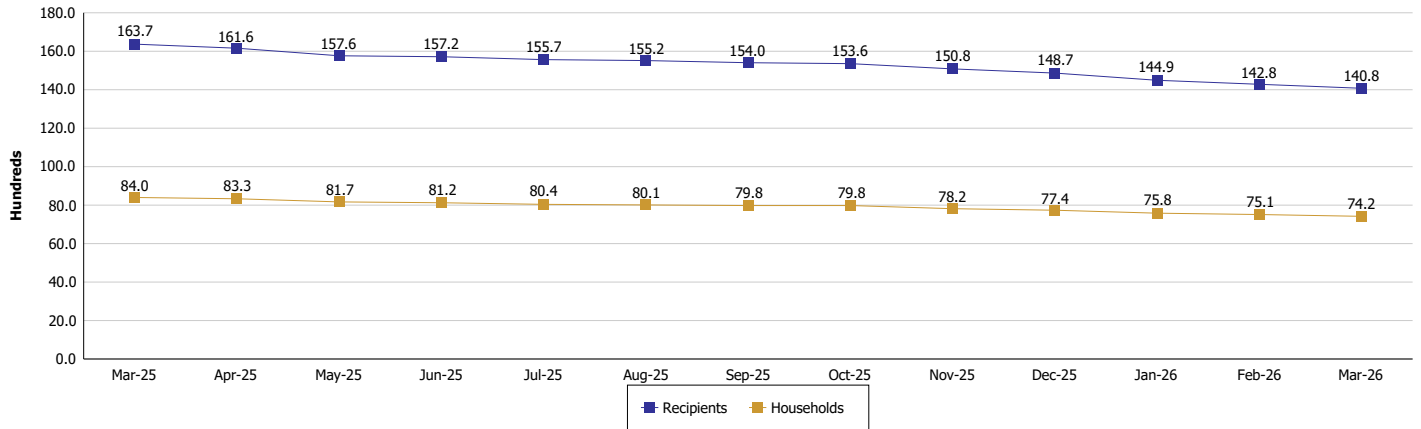
Location: Madison County

SUPPLEMENTAL NUTRITION ASSISTANCE PROGRAM (SNAP)

SNAP Issuance



SNAP Households and Recipients





DIVISION OF FAMILY RESOURCES

Monthly Management Report

Reporting Month: March 2026

Location: Madison County

HIP 2.0 and SNAP

	March 2026	February 2026	March 2025	Annual Change
Total HIP 2.0 Members	14,094	14,278	18,142	-22.31%
HIP Members also SNAP Recipients	4,485	4,564	5,578	-19.59%
Percentage HIP Members SNAP Recipients	31.8%	32.0%	30.7%	1.08
HIP Members SNAP ABAWDs	536	541	141	280.14%
Percentage HIP Members SNAP ABAWDs	3.8%	3.8%	0.8%	3.0



DIVISION OF FAMILY RESOURCES

Monthly Management Report

Reporting Month: March 2026

Location: Madison County

INDIANA MANPOWER PLACEMENT AND COMPREHENSIVE TRAINING (IMPACT)

	March 2026	February 2026	March 2025	Annual Change
Number of IMPACT cases	7	24	18	-61.11%
Number of TANF IMPACT adults	2	9	4	-50.00%
Number of SNAP IMPACT Cases	5	15	14	-64.29%
Total number of adults employed	36	53	35	2.86%
Number of TANF IMPACT adults newly employed (within past 30 days)	1	2	3	-66.67%
Number of SNAP IMPACT adults employed	35	51	32	9.38%
Total number of adults ineligible due to employment	30	32	32	-6.25%
Number of TANF adults ineligible due to employment	1	0	0	
Number of SNAP adults ineligible due to employment	29	32	32	-9.38%

IMPACT Caseloads
(SNAP, TANF, Total Caseload)

