



## DIVISION OF FAMILY RESOURCES

# Fayette County Monthly Management Report March 2026

### State of Indiana

Mike Braun  
Governor

### Family and Social Services Administration

Mitch Roob  
Secretary

### Division of Family Resources

Sunshine Beam  
Director

For questions regarding data on this report contact:  
[office.Communications@fssa.IN.gov](mailto:office.Communications@fssa.IN.gov)



## State of Indiana

Published April 2026



## DIVISION OF FAMILY RESOURCES

### Monthly Management Report

Reporting Month: March 2026

Location: Fayette County

#### TEMPORARY ASSISTANCE FOR NEEDY FAMILIES (TANF)

Child-Only and One-Parent Families	March 2026	February 2026	March 2025	Annual Change
Number of families receiving TANF Grants	22	22	29	-24.14%
Total number of grant recipients	44	44	61	-27.87%
Number of adult grant recipients	4	4	4	0.00%
Number of child grant recipients	40	40	57	-29.82%
Total payments	\$8,307	\$8,257	\$11,412	-27.21%
Average payment per case	\$377.59	\$375.32	\$393.52	-4.05%
Average payment per recipient	\$188.80	\$187.66	\$187.08	0.92%
Number of cases with benefits reduced to zero	0	0	0	0%
Number of recipients with benefits reduced to zero	0	0	0	0%
Number of adult recipients with benefit reduced to zero	0	0	0	0%
Number of child recipients with benefit reduced to zero	0	0	0	0%

Pregnancy TANF Families	March 2026	February 2026	March 2025	Annual Change
Number of families receiving TANF Grants	0	0	0	0%
Total number of grant recipients	0	0	0	0%
Total payments	\$0.00	\$0.00	\$0.00	0%
Average payment per case	\$0.00	\$0.00	\$0.00	0.00%
Average payment per recipient	\$0.00	\$0.00	\$0.00	0.00%
Number of cases with benefits reduced to zero	0	0	0	0%
Number of recipients with benefits reduced to zero	0	0	0	0%



## DIVISION OF FAMILY RESOURCES

### Monthly Management Report

Two-Parent Families	March 2026	February 2026	March 2025	Annual Change
Number of families receiving TANF Grants	1	1	1	0.00%
Total number of grant recipients	5	5	5	0.00%
Number of adult grant recipients	2	2	2	0.00%
Number of child grant recipients	3	3	3	0.00%
Total payments	\$721	\$721	\$721	0.00%
Average payment per case	\$721.00	\$721.00	\$721.00	0.00%
Average payment per recipient	\$144.20	\$144.20	\$144.20	0.00%
Number of cases with benefits reduced to zero	0	0	0	0%
Number of recipients with benefits reduced to zero	0	0	0	0%
Number of adult recipients with benefit reduced to zero	0	0	0	0%
Number of child recipients with benefit reduced to zero	0	0	0	0%

Note: The two-parent case count includes cases in which a parent living in the home is excluded from receiving TANF benefits but whose income is used in the TANF eligibility determination.



## DIVISION OF FAMILY RESOURCES

### Monthly Management Report

Reporting Month: March 2026

Location: Fayette County

#### TANF - APPLICATIONS

	March 2026	February 2026	March 2025	Annual Change
<b>Number of Applications</b>	6	13	16	-62.50%

#### TANF - RECIPIENTS BY ZIP CODE

ZIP Code	Households	Recipients
46133	1	1
47331	22	48
<b>Total</b>	<b>23</b>	<b>49</b>



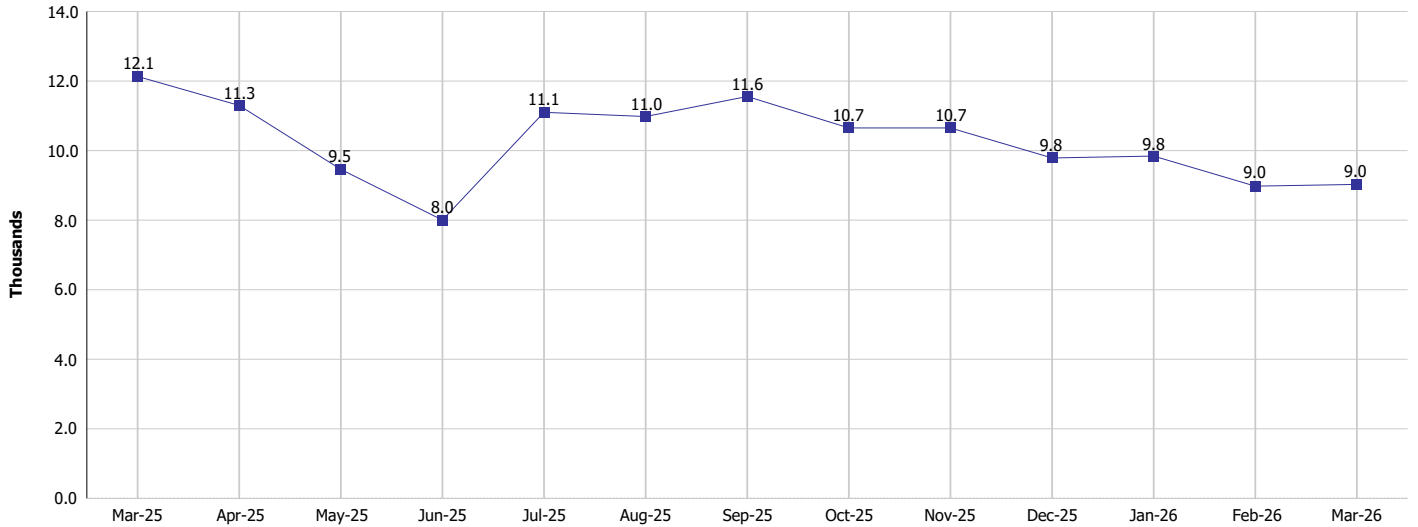
# DIVISION OF FAMILY RESOURCES

## Monthly Management Report

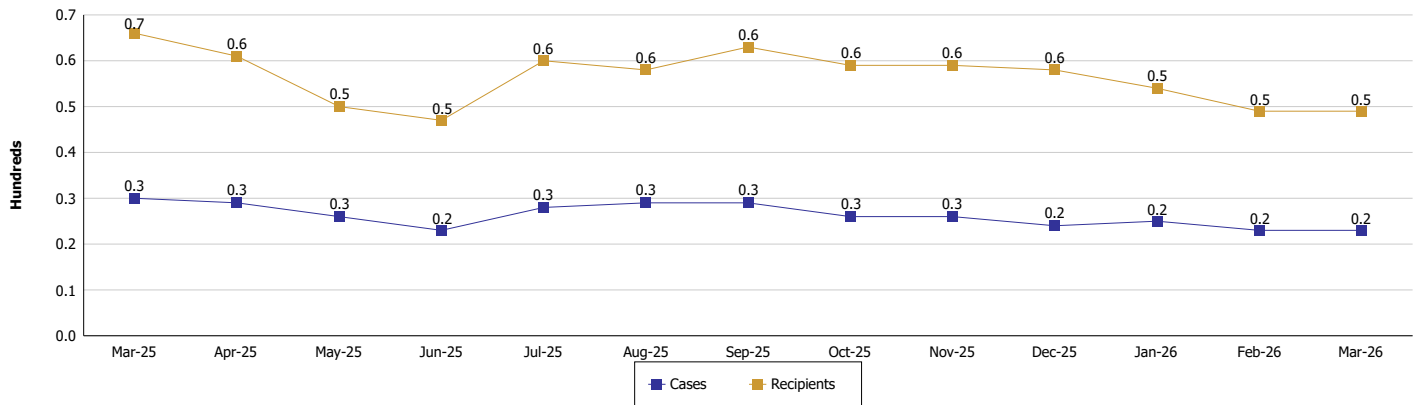
Reporting Month: March 2026 Location: Fayette County

### TEMPORARY ASSISTANCE FOR NEEDY FAMILIES (TANF)

TANF Regular And TANF Two-Parent Cash Assistance



TANF Cases and Recipients  
(TANF Regular and TANF Two-Parent)





## DIVISION OF FAMILY RESOURCES

### Monthly Management Report

Reporting Month: March 2026

Location: Fayette County

#### SUPPLEMENTAL NUTRITION ASSISTANCE PROGRAM (SNAP)

	March 2026	February 2026	March 2025	Annual Change
Total issuance	\$584,306	\$571,103	\$612,152	-4.55%
Number of households receiving SNAP benefits	1,648	1,641	1,726	-4.52%
Number of recipients	3,123	3,084	3,339	-6.47%
Average issuance per household	\$354.55	\$348.02	\$354.67	-0.03%
Average issuance per recipient	\$187.1	\$185.18	\$183.33	2.06%
Number of Applications	145	150	149	-2.68%



## DIVISION OF FAMILY RESOURCES

### Monthly Management Report

Reporting Month: March 2026 Location: Fayette County

#### SNAP - RECIPIENTS BY ZIP CODE

ZIP Code	Households	Recipients
46011	1	1
46127	5	14
46133	19	39
46208	1	1
46217	1	1
46802	1	1
46952	1	1
47274	1	1
47325	5	11
47327	2	2
47331	1,605	3,039
47357	2	2
47374	3	7
None	1	3
<b>Totals</b>	<b>1,648</b>	<b>3,123</b>



## DIVISION OF FAMILY RESOURCES

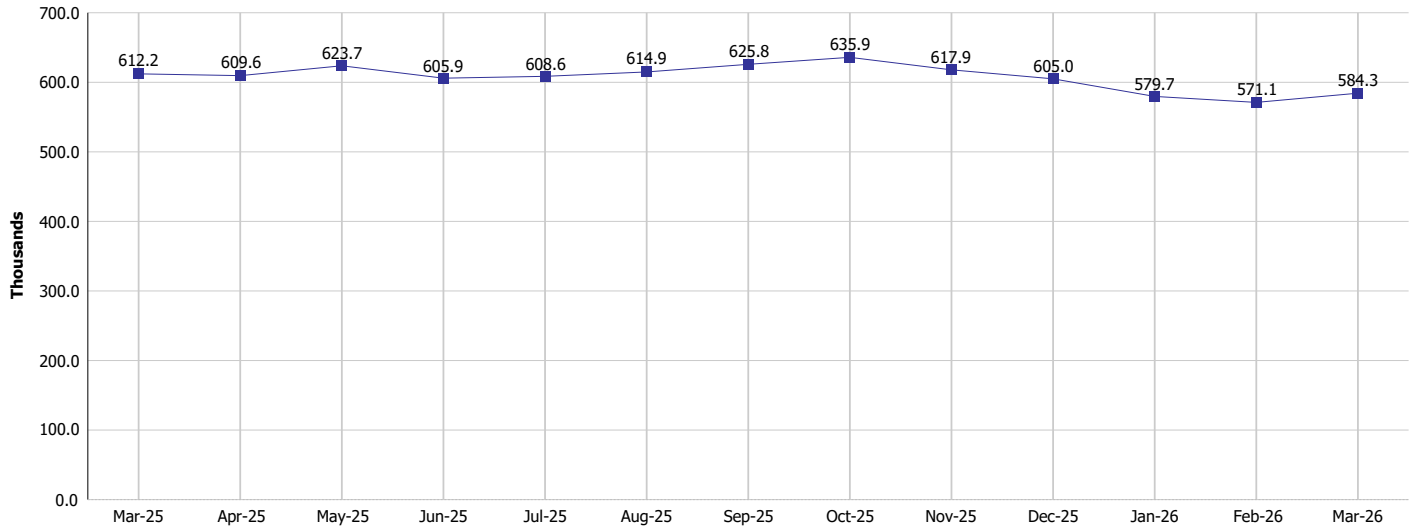
### Monthly Management Report

Reporting Month: March 2026

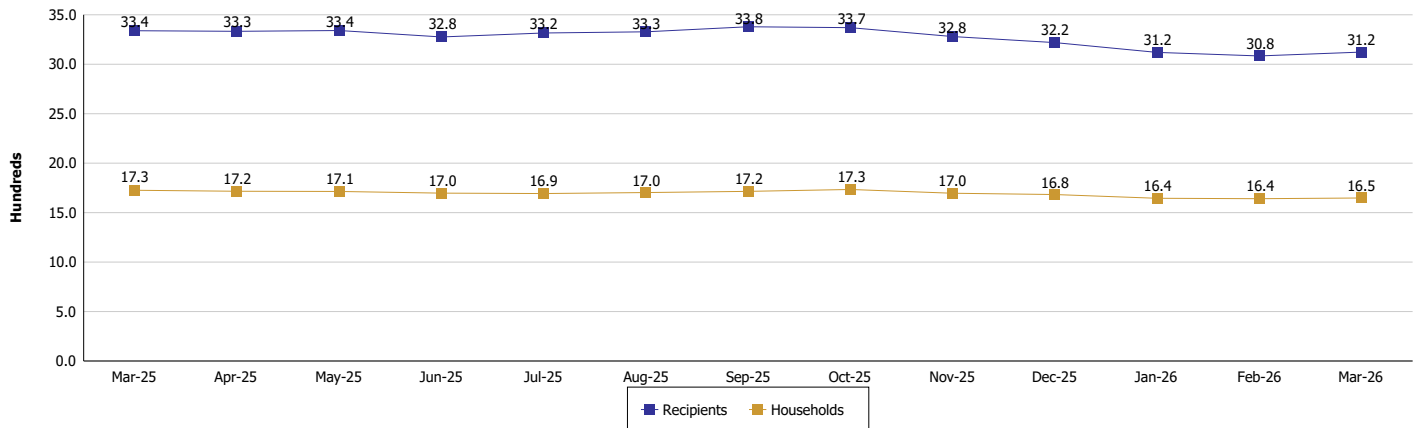
Location: Fayette County

#### SUPPLEMENTAL NUTRITION ASSISTANCE PROGRAM (SNAP)

SNAP Issuance



SNAP Households and Recipients





## DIVISION OF FAMILY RESOURCES

### Monthly Management Report

Reporting Month: March 2026

Location: Fayette County

#### HIP 2.0 and SNAP

	March 2026	February 2026	March 2025	Annual Change
Total HIP 2.0 Members	2,916	2,934	3,432	-15.03%
HIP Members also SNAP Recipients	972	965	1,077	-9.75%
Percentage HIP Members SNAP Recipients	33.3%	32.9%	31.4%	1.95
HIP Members SNAP ABAWDs	90	83	22	309.09%
Percentage HIP Members SNAP ABAWDs	3.1%	2.8%	0.6%	2.4



## DIVISION OF FAMILY RESOURCES

### Monthly Management Report

Reporting Month: March 2026

Location: Fayette County

#### INDIANA MANPOWER PLACEMENT AND COMPREHENSIVE TRAINING (IMPACT)

	March 2026	February 2026	March 2025	Annual Change
Number of IMPACT cases	1	2	2	-50.00%
Number of TANF IMPACT adults	0	0	1	-100.00%
Number of SNAP IMPACT Cases	1	2	1	0.00%
Total number of adults employed	8	10	14	-42.86%
Number of TANF IMPACT adults newly employed (within past 30 days)	0	0	0	
Number of SNAP IMPACT adults employed	8	10	14	-42.86%
Total number of adults ineligible due to employment	9	11	15	-40.00%
Number of TANF adults ineligible due to employment	0	0	1	-100.00%
Number of SNAP adults ineligible due to employment	9	11	14	-35.71%

