



## DIVISION OF FAMILY RESOURCES

# Delaware County Monthly Management Report March 2026

### State of Indiana

Mike Braun  
Governor

### Family and Social Services Administration

Mitch Roob  
Secretary

### Division of Family Resources

Sunshine Beam  
Director

For questions regarding data on this report contact:  
[office.Communications@fssa.IN.gov](mailto:office.Communications@fssa.IN.gov)



## State of Indiana

Published April 2026



## DIVISION OF FAMILY RESOURCES

### Monthly Management Report

Reporting Month: March 2026

Location: Delaware County

#### TEMPORARY ASSISTANCE FOR NEEDY FAMILIES (TANF)

Child-Only and One-Parent Families	March 2026	February 2026	March 2025	Annual Change
Number of families receiving TANF Grants	99	106	97	2.06%
Total number of grant recipients	240	255	209	14.83%
Number of adult grant recipients	52	53	43	20.93%
Number of child grant recipients	188	202	166	13.25%
Total payments	\$39,620	\$42,414	\$37,015	7.04%
Average payment per case	\$400.20	\$400.13	\$381.60	4.88%
Average payment per recipient	\$165.08	\$166.33	\$177.11	-6.79%
Number of cases with benefits reduced to zero	1	1	2	-50.00%
Number of recipients with benefits reduced to zero	2	2	2	0.00%
Number of adult recipients with benefit reduced to zero	1	1	0	0%
Number of child recipients with benefit reduced to zero	1	1	2	-50.00%

Pregnancy TANF Families	March 2026	February 2026	March 2025	Annual Change
Number of families receiving TANF Grants	2	3	5	-60.00%
Total number of grant recipients	2	3	5	-60.00%
Total payments	\$496.00	\$744.00	\$1,210.00	-59.01%
Average payment per case	\$248.00	\$248.00	\$242.00	2.48%
Average payment per recipient	\$248.00	\$248.00	\$242.00	2.48%
Number of cases with benefits reduced to zero	0	0	0	0%
Number of recipients with benefits reduced to zero	0	0	0	0%



## DIVISION OF FAMILY RESOURCES

### Monthly Management Report

Two-Parent Families	March 2026	February 2026	March 2025	Annual Change
Number of families receiving TANF Grants	1	1	0	0%
Total number of grant recipients	4	4	0	0%
Number of adult grant recipients	2	2	0	0%
Number of child grant recipients	2	2	0	0%
Total payments	\$617	\$617	\$0	0%
Average payment per case	\$617.00	\$617.00	\$0.00	0.00%
Average payment per recipient	\$154.25	\$154.25	\$0.00	0.00%
Number of cases with benefits reduced to zero	0	0	0	0%
Number of recipients with benefits reduced to zero	0	0	0	0%
Number of adult recipients with benefit reduced to zero	0	0	0	0%
Number of child recipients with benefit reduced to zero	0	0	0	0%

Note: The two-parent case count includes cases in which a parent living in the home is excluded from receiving TANF benefits but whose income is used in the TANF eligibility determination.



## DIVISION OF FAMILY RESOURCES

### Monthly Management Report

Reporting Month: March 2026

Location: Delaware County

#### TANF - APPLICATIONS

	March 2026	February 2026	March 2025	Annual Change
<b>Number of Applications</b>	100	69	98	2.04%

#### TANF - RECIPIENTS BY ZIP CODE

ZIP Code	Households	Recipients
46017	1	1
47302	50	121
47303	23	62
47304	13	30
47305	7	20
47320	1	1
47334	1	2
47336	1	1
47342	2	4
47368	1	2
<b>Total</b>	<b>100</b>	<b>244</b>



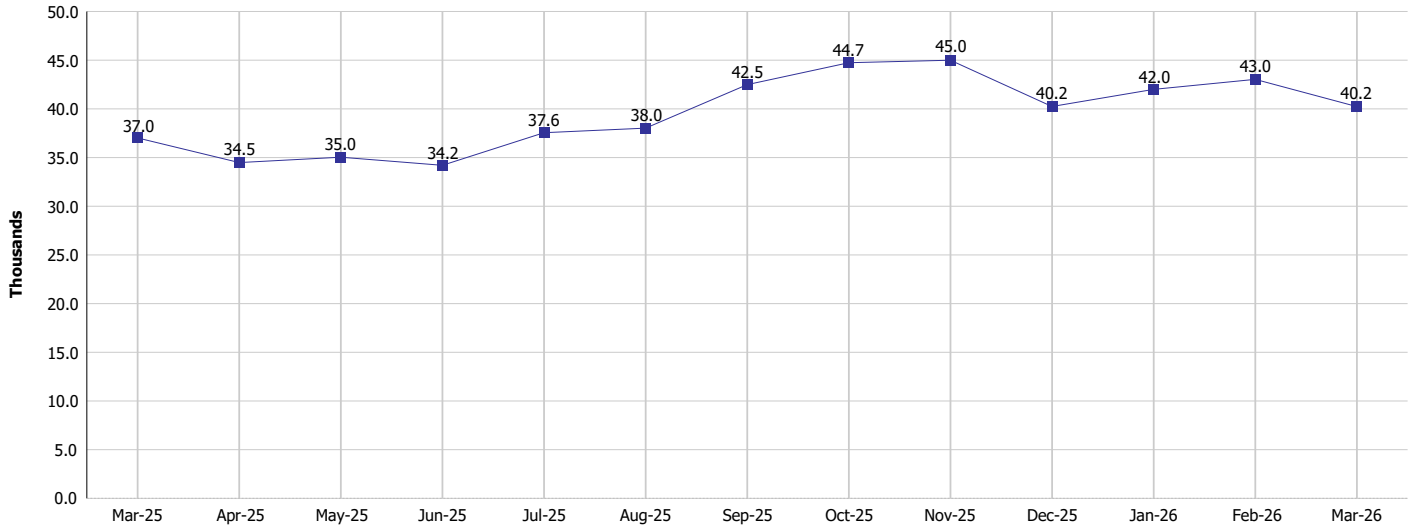
# DIVISION OF FAMILY RESOURCES

## Monthly Management Report

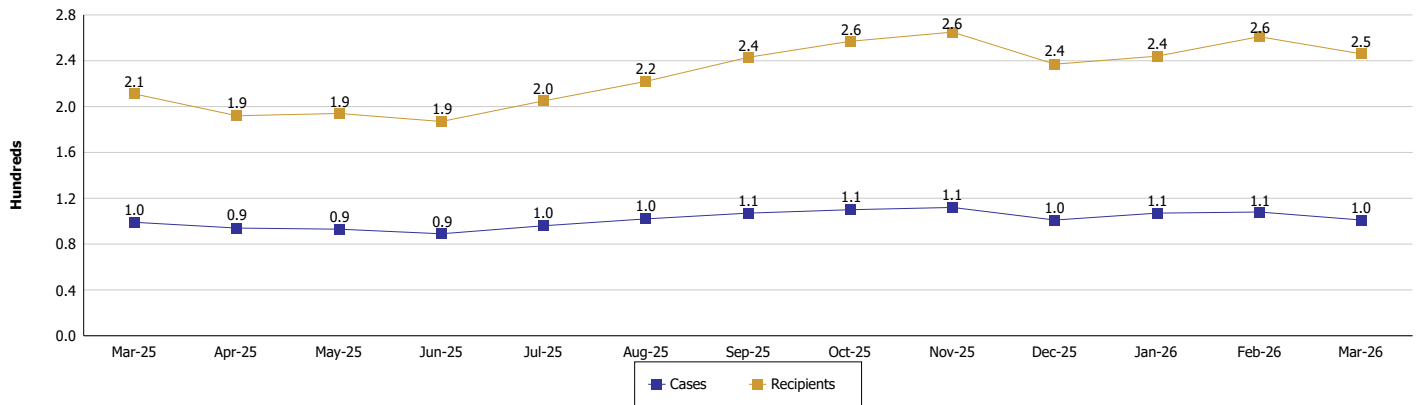
Reporting Month: March 2026 Location: Delaware County

### TEMPORARY ASSISTANCE FOR NEEDY FAMILIES (TANF)

TANF Regular And TANF Two-Parent Cash Assistance



TANF Cases and Recipients  
(TANF Regular and TANF Two-Parent)





**DIVISION OF FAMILY RESOURCES**

**Monthly Management Report**

Reporting Month: March 2026

Location: Delaware County

**SUPPLEMENTAL NUTRITION ASSISTANCE PROGRAM (SNAP)**

	March 2026	February 2026	March 2025	Annual Change
Total issuance	\$2,636,430	\$2,649,368	\$2,774,578	-4.98%
Number of households receiving SNAP benefits	6,627	6,654	7,030	-5.73%
Number of recipients	13,087	13,129	13,963	-6.27%
Average issuance per household	\$397.83	\$398.16	\$394.68	0.8%
Average issuance per recipient	\$201.45	\$201.8	\$198.71	1.38%
Number of Applications	690	694	716	-3.63%



## DIVISION OF FAMILY RESOURCES

### Monthly Management Report

Reporting Month: March 2026	Location: Delaware County
-----------------------------	---------------------------

#### SNAP - RECIPIENTS BY ZIP CODE

ZIP Code	Households	Recipients
46001	6	13
46012	4	14
46013	4	5
46017	13	32
46036	1	1
46040	1	1
46060	1	3
46143	1	1
46151	1	1
46205	1	1
46241	1	3
46514	1	1
46619	1	1
46799	1	1
46902	1	6
46952	1	1
46953	2	2
47130	1	1
47201	1	3
47302	2,945	5,880
47303	1,451	2,804
47304	881	1,834
47305	524	890
47306	1	1
47307	2	3
47308	4	4
47320	125	245
47331	1	1
47334	114	218
47336	8	22
47338	141	318
47340	1	2
47342	94	203
47348	1	1
47354	3	14
47356	1	1
47367	7	14
47368	19	44
47374	2	2
47383	66	128
47396	182	347
47804	1	1
47904	1	1
None	9	18
Totals	6,627	13,087



# DIVISION OF FAMILY RESOURCES

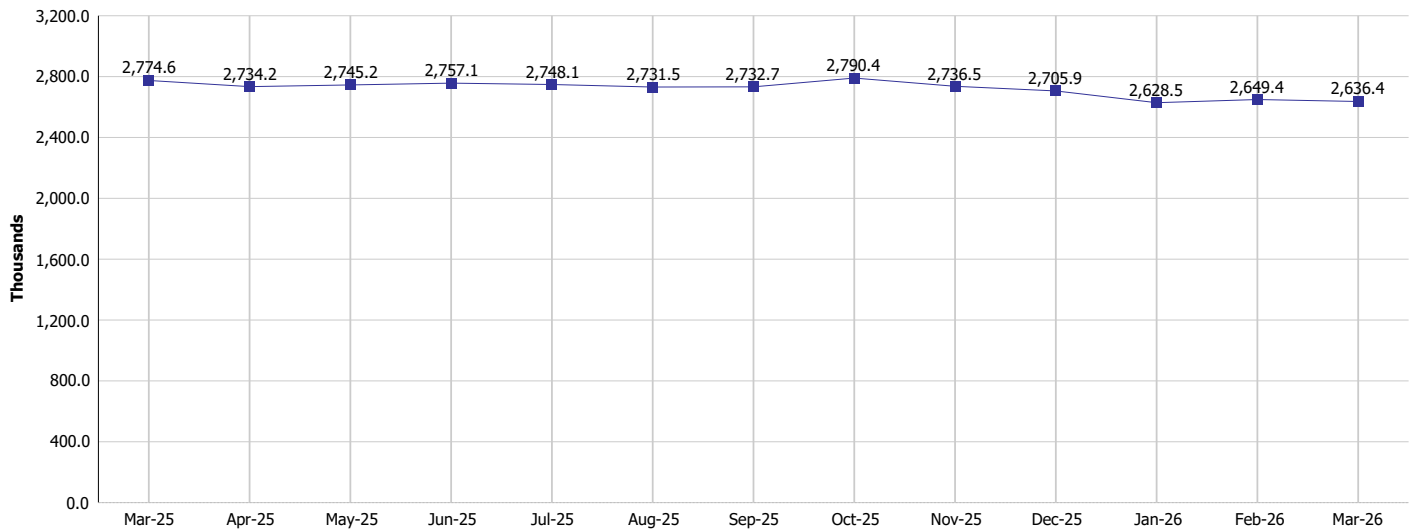
## Monthly Management Report

Reporting Month: March 2026

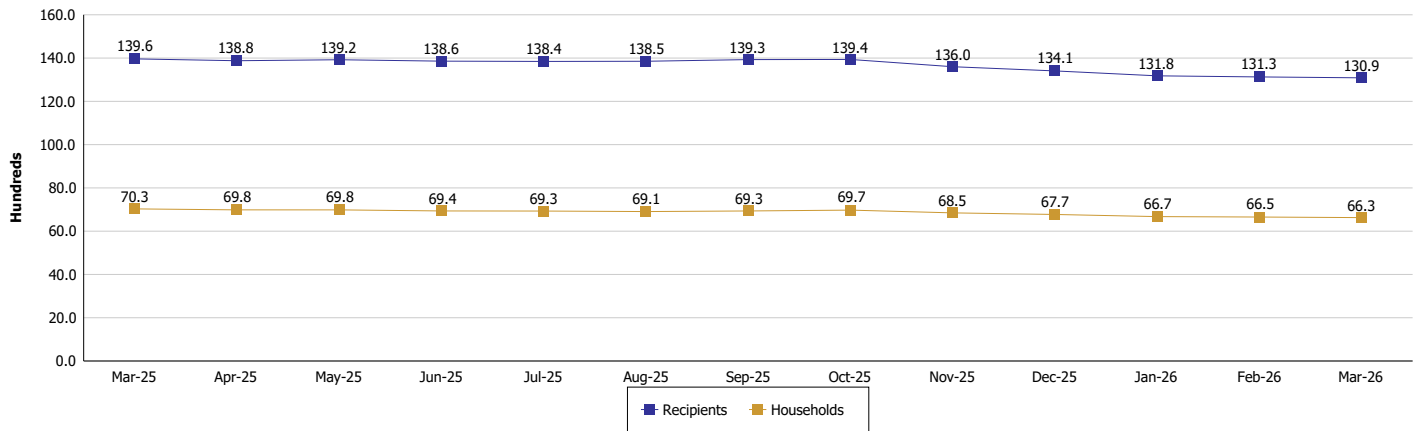
Location: Delaware County

### SUPPLEMENTAL NUTRITION ASSISTANCE PROGRAM (SNAP)

SNAP Issuance



SNAP Households and Recipients





## DIVISION OF FAMILY RESOURCES

### Monthly Management Report

Reporting Month: March 2026

Location: Delaware County

#### HIP 2.0 and SNAP

	March 2026	February 2026	March 2025	Annual Change
Total HIP 2.0 Members	11,284	11,356	14,161	-20.32%
HIP Members also SNAP Recipients	4,037	4,078	4,665	-13.46%
Percentage HIP Members SNAP Recipients	35.8%	35.9%	32.9%	2.83
HIP Members SNAP ABAWDs	446	458	120	271.67%
Percentage HIP Members SNAP ABAWDs	4.0%	4.0%	0.8%	3.1



## DIVISION OF FAMILY RESOURCES

### Monthly Management Report

Reporting Month: March 2026

Location: Delaware County

#### INDIANA MANPOWER PLACEMENT AND COMPREHENSIVE TRAINING (IMPACT)

	March 2026	February 2026	March 2025	Annual Change
Number of IMPACT cases	22	20	14	57.14%
Number of TANF IMPACT adults	7	7	5	40.00%
Number of SNAP IMPACT Cases	15	13	9	66.67%
Total number of adults employed	36	40	26	38.46%
Number of TANF IMPACT adults newly employed (within past 30 days)	1	0	0	
Number of SNAP IMPACT adults employed	35	40	26	34.62%
Total number of adults ineligible due to employment	20	21	29	-31.03%
Number of TANF adults ineligible due to employment	0	1	1	-100.00%
Number of SNAP adults ineligible due to employment	20	20	28	-28.57%

