



## DIVISION OF FAMILY RESOURCES

# Cass County Monthly Management Report March 2026

### State of Indiana

Mike Braun  
Governor

### Family and Social Services Administration

Mitch Roob  
Secretary

### Division of Family Resources

Sunshine Beam  
Director

For questions regarding data on this report contact:  
[office.Communications@fssa.IN.gov](mailto:office.Communications@fssa.IN.gov)



## State of Indiana

Published April 2026



## DIVISION OF FAMILY RESOURCES

### Monthly Management Report

Reporting Month: March 2026

Location: Cass County

#### TEMPORARY ASSISTANCE FOR NEEDY FAMILIES (TANF)

Child-Only and One-Parent Families	March 2026	February 2026	March 2025	Annual Change
Number of families receiving TANF Grants	40	43	44	-9.09%
Total number of grant recipients	90	101	90	0.00%
Number of adult grant recipients	17	20	19	-10.53%
Number of child grant recipients	73	81	71	2.82%
Total payments	\$15,657	\$16,634	\$16,708	-6.29%
Average payment per case	\$391.42	\$386.84	\$379.73	3.08%
Average payment per recipient	\$173.97	\$164.69	\$185.64	-6.29%
Number of cases with benefits reduced to zero	0	0	2	-100.00%
Number of recipients with benefits reduced to zero	0	0	2	-100.00%
Number of adult recipients with benefit reduced to zero	0	0	1	-100.00%
Number of child recipients with benefit reduced to zero	0	0	1	-100.00%

Pregnancy TANF Families	March 2026	February 2026	March 2025	Annual Change
Number of families receiving TANF Grants	2	1	3	-33.33%
Total number of grant recipients	2	1	3	-33.33%
Total payments	\$486.00	\$238.00	\$701.00	-30.67%
Average payment per case	\$243.00	\$238.00	\$233.67	3.99%
Average payment per recipient	\$243.00	\$238.00	\$233.67	3.99%
Number of cases with benefits reduced to zero	0	0	1	-100.00%
Number of recipients with benefits reduced to zero	0	0	1	-100.00%



## DIVISION OF FAMILY RESOURCES

### Monthly Management Report

Two-Parent Families	March 2026	February 2026	March 2025	Annual Change
Number of families receiving TANF Grants	2	2	18	-88.89%
Total number of grant recipients	11	8	67	-83.58%
Number of adult grant recipients	3	4	36	-91.67%
Number of child grant recipients	8	4	31	-74.19%
Total payments	\$1,394	\$1,041	\$10,586	-86.83%
Average payment per case	\$697.00	\$520.50	\$588.11	18.52%
Average payment per recipient	\$126.73	\$130.12	\$158.00	-19.79%
Number of cases with benefits reduced to zero	0	0	0	0%
Number of recipients with benefits reduced to zero	0	0	0	0%
Number of adult recipients with benefit reduced to zero	0	0	0	0%
Number of child recipients with benefit reduced to zero	0	0	0	0%

Note: The two-parent case count includes cases in which a parent living in the home is excluded from receiving TANF benefits but whose income is used in the TANF eligibility determination.



## DIVISION OF FAMILY RESOURCES

### Monthly Management Report

Reporting Month: March 2026	Location: Cass County
-----------------------------	-----------------------

#### TANF - APPLICATIONS

	March 2026	February 2026	March 2025	Annual Change
<b>Number of Applications</b>	23	24	54	-57.41%

#### TANF - RECIPIENTS BY ZIP CODE

ZIP Code	Households	Recipients
46932	2	3
46947	36	85
46950	1	5
46978	1	4
46988	1	1
46994	1	3
<b>Total</b>	<b>42</b>	<b>101</b>



## DIVISION OF FAMILY RESOURCES

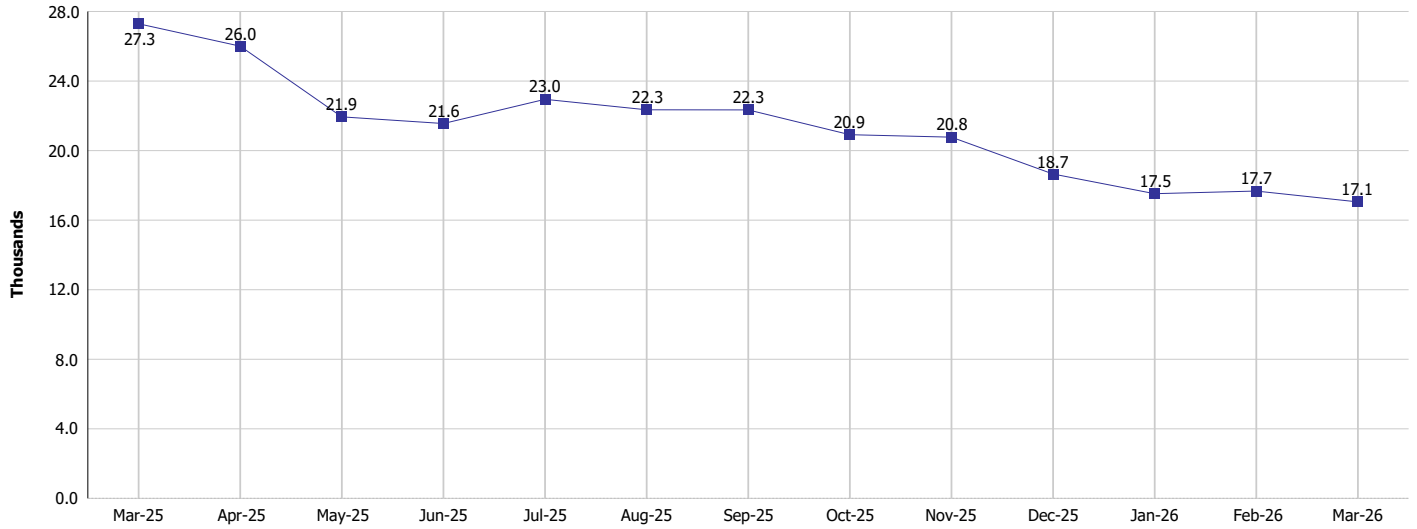
### Monthly Management Report

Reporting Month: March 2026

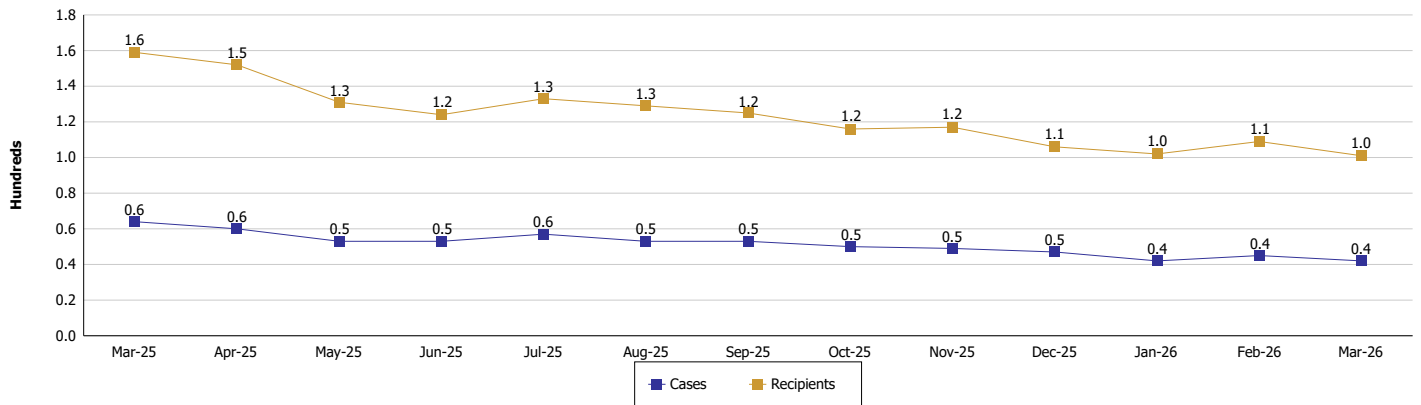
Location: Cass County

#### TEMPORARY ASSISTANCE FOR NEEDY FAMILIES (TANF)

TANF Regular And TANF Two-Parent Cash Assistance



TANF Cases and Recipients  
(TANF Regular and TANF Two-Parent)





**DIVISION OF FAMILY RESOURCES**

**Monthly Management Report**

Reporting Month: March 2026

Location: Cass County

**SUPPLEMENTAL NUTRITION ASSISTANCE PROGRAM (SNAP)**

	March 2026	February 2026	March 2025	Annual Change
Total issuance	\$654,917	\$669,593	\$798,869	-18.02%
Number of households receiving SNAP benefits	1,623	1,663	1,958	-17.11%
Number of recipients	3,433	3,530	4,096	-16.19%
Average issuance per household	\$403.52	\$402.64	\$408	-1.1%
Average issuance per recipient	\$190.77	\$189.69	\$195.04	-2.19%
Number of Applications	153	160	194	-21.13%



## DIVISION OF FAMILY RESOURCES

### Monthly Management Report

Reporting Month: March 2026	Location: Cass County
-----------------------------	-----------------------

#### SNAP - RECIPIENTS BY ZIP CODE

ZIP Code	Households	Recipients
46041	1	6
46347	1	1
46528	1	1
46532	1	2
46534	1	3
46562	1	1
46901	5	10
46902	1	5
46926	2	6
46932	90	201
46939	1	1
46947	1,355	2,821
46950	15	35
46952	1	1
46961	5	11
46967	2	2
46970	9	16
46975	1	5
46978	40	77
46988	25	65
46994	56	134
46998	4	12
47032	1	3
47804	1	1
47959	1	4
None	2	9
<b>Totals</b>	<b>1,623</b>	<b>3,433</b>



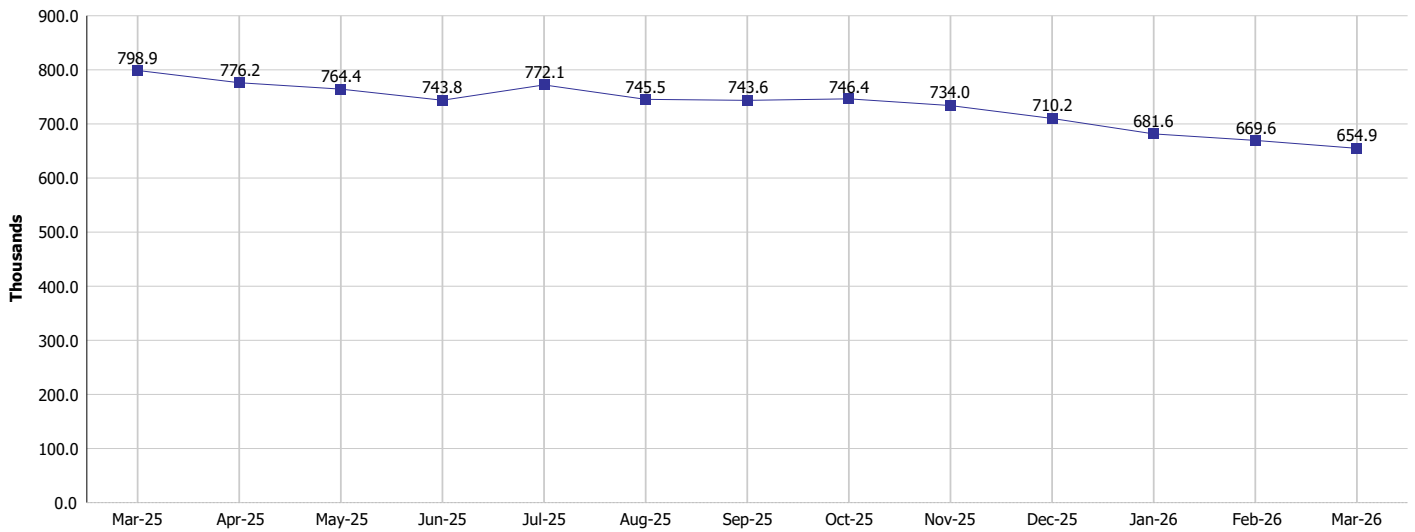
# DIVISION OF FAMILY RESOURCES

## Monthly Management Report

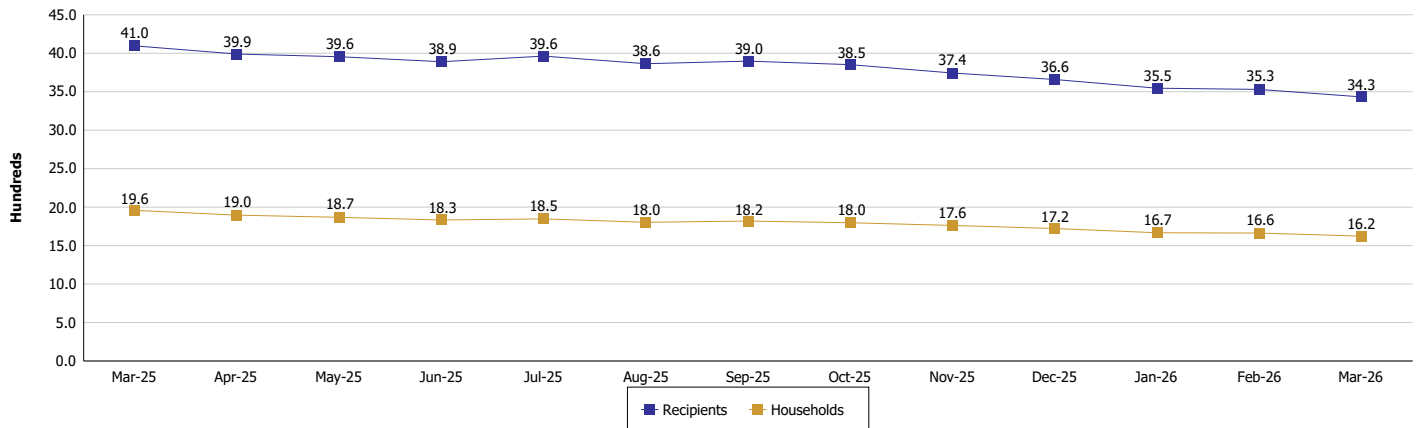
Reporting Month: March 2026 Location: Cass County

### SUPPLEMENTAL NUTRITION ASSISTANCE PROGRAM (SNAP)

**SNAP Issuance**



**SNAP Households and Recipients**





## DIVISION OF FAMILY RESOURCES

### Monthly Management Report

Reporting Month: March 2026

Location: Cass County

#### HIP 2.0 and SNAP

	March 2026	February 2026	March 2025	Annual Change
Total HIP 2.0 Members	3,740	3,824	5,179	-27.79%
HIP Members also SNAP Recipients	949	978	1,165	-18.54%
Percentage HIP Members SNAP Recipients	25.4%	25.6%	22.5%	2.88
HIP Members SNAP ABAWDs	110	109	47	134.04%
Percentage HIP Members SNAP ABAWDs	2.9%	2.9%	0.9%	2.0



## DIVISION OF FAMILY RESOURCES

### Monthly Management Report

Reporting Month: March 2026

Location: Cass County

#### INDIANA MANPOWER PLACEMENT AND COMPREHENSIVE TRAINING (IMPACT)

	March 2026	February 2026	March 2025	Annual Change
Number of IMPACT cases	4	8	4	0.00%
Number of TANF IMPACT adults	1	4	1	0.00%
Number of SNAP IMPACT Cases	3	4	3	0.00%
Total number of adults employed	13	9	13	0.00%
Number of TANF IMPACT adults newly employed (within past 30 days)	1	1	3	-66.67%
Number of SNAP IMPACT adults employed	12	8	10	20.00%
Total number of adults ineligible due to employment	7	8	17	-58.82%
Number of TANF adults ineligible due to employment	1	1	5	-80.00%
Number of SNAP adults ineligible due to employment	6	7	12	-50.00%

