



## DIVISION OF FAMILY RESOURCES

# Carroll County Monthly Management Report March 2026

### State of Indiana

Mike Braun  
Governor

### Family and Social Services Administration

Mitch Roob  
Secretary

### Division of Family Resources

Sunshine Beam  
Director

For questions regarding data on this report contact:  
[office.Communications@fssa.IN.gov](mailto:office.Communications@fssa.IN.gov)



## State of Indiana

Published April 2026



## DIVISION OF FAMILY RESOURCES

### Monthly Management Report

Reporting Month: March 2026

Location: Carroll County

#### TEMPORARY ASSISTANCE FOR NEEDY FAMILIES (TANF)

Child-Only and One-Parent Families	March 2026	February 2026	March 2025	Annual Change
Number of families receiving TANF Grants	7	7	8	-12.50%
Total number of grant recipients	11	11	13	-15.38%
Number of adult grant recipients	2	2	2	0.00%
Number of child grant recipients	9	9	11	-18.18%
Total payments	\$2,380	\$2,380	\$2,789	-14.66%
Average payment per case	\$340.00	\$340.00	\$348.62	-2.47%
Average payment per recipient	\$216.36	\$216.36	\$214.54	0.85%
Number of cases with benefits reduced to zero	0	0	0	0%
Number of recipients with benefits reduced to zero	0	0	0	0%
Number of adult recipients with benefit reduced to zero	0	0	0	0%
Number of child recipients with benefit reduced to zero	0	0	0	0%

Pregnancy TANF Families	March 2026	February 2026	March 2025	Annual Change
Number of families receiving TANF Grants	0	0	0	0%
Total number of grant recipients	0	0	0	0%
Total payments	\$0.00	\$0.00	\$0.00	0%
Average payment per case	\$0.00	\$0.00	\$0.00	0.00%
Average payment per recipient	\$0.00	\$0.00	\$0.00	0.00%
Number of cases with benefits reduced to zero	0	0	0	0%
Number of recipients with benefits reduced to zero	0	0	0	0%



## DIVISION OF FAMILY RESOURCES

### Monthly Management Report

Two-Parent Families	March 2026	February 2026	March 2025	Annual Change
Number of families receiving TANF Grants	1	1	0	0%
Total number of grant recipients	4	4	0	0%
Number of adult grant recipients	0	0	0	0%
Number of child grant recipients	4	4	0	0%
Total payments	\$617	\$617	\$0	0%
Average payment per case	\$617.00	\$617.00	\$0.00	0.00%
Average payment per recipient	\$154.25	\$154.25	\$0.00	0.00%
Number of cases with benefits reduced to zero	0	0	0	0%
Number of recipients with benefits reduced to zero	0	0	0	0%
Number of adult recipients with benefit reduced to zero	0	0	0	0%
Number of child recipients with benefit reduced to zero	0	0	0	0%

Note: The two-parent case count includes cases in which a parent living in the home is excluded from receiving TANF benefits but whose income is used in the TANF eligibility determination.



## DIVISION OF FAMILY RESOURCES

### Monthly Management Report

Reporting Month: March 2026

Location: Carroll County

#### TANF - APPLICATIONS

	March 2026	February 2026	March 2025	Annual Change
<b>Number of Applications</b>	5	9	3	66.67%

#### TANF - RECIPIENTS BY ZIP CODE

ZIP Code	Households	Recipients
46917	1	4
46923	3	5
46929	3	4
46977	1	2
<b>Total</b>	<b>8</b>	<b>15</b>



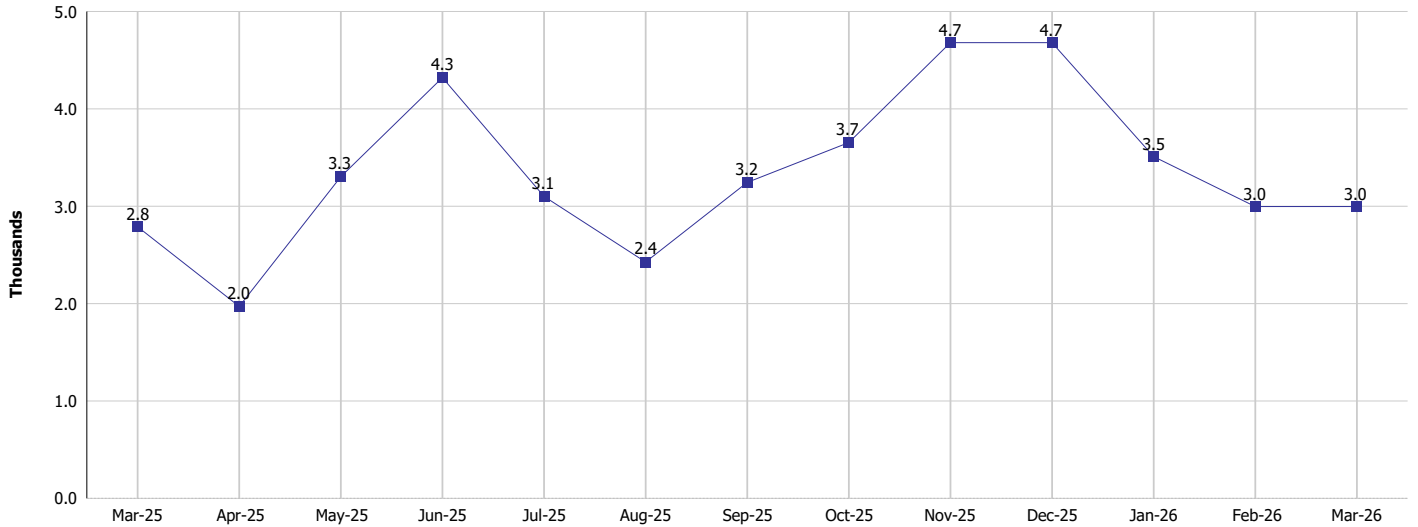
# DIVISION OF FAMILY RESOURCES

## Monthly Management Report

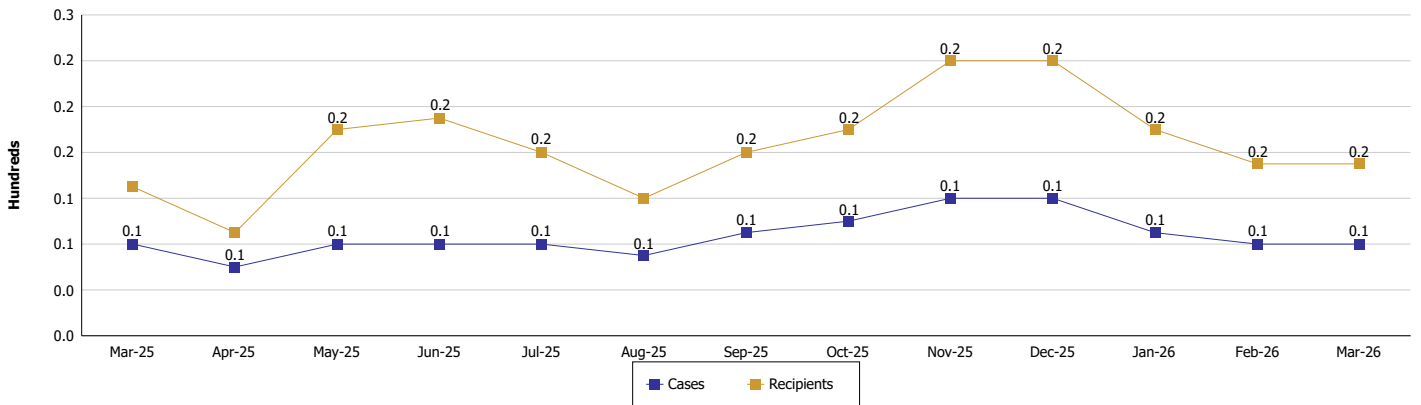
Reporting Month: March 2026 Location: Carroll County

### TEMPORARY ASSISTANCE FOR NEEDY FAMILIES (TANF)

TANF Regular And TANF Two-Parent Cash Assistance



TANF Cases and Recipients  
(TANF Regular and TANF Two-Parent)





**DIVISION OF FAMILY RESOURCES**

**Monthly Management Report**

Reporting Month: March 2026

Location: Carroll County

**SUPPLEMENTAL NUTRITION ASSISTANCE PROGRAM (SNAP)**

	March 2026	February 2026	March 2025	Annual Change
Total issuance	\$178,907	\$187,398	\$197,387	-9.36%
Number of households receiving SNAP benefits	481	497	533	-9.76%
Number of recipients	960	992	1,048	-8.4%
Average issuance per household	\$371.95	\$377.06	\$370.33	0.44%
Average issuance per recipient	\$186.36	\$188.91	\$188.35	-1.06%
Number of Applications	58	51	48	20.83%



## DIVISION OF FAMILY RESOURCES

### Monthly Management Report

Reporting Month: March 2026 Location: Carroll County

#### SNAP - RECIPIENTS BY ZIP CODE

ZIP Code	Households	Recipients
46041	2	3
46065	6	13
46901	1	2
46913	23	50
46915	8	12
46916	4	8
46917	31	60
46920	13	29
46923	209	437
46929	82	164
46932	1	1
46947	3	11
46975	1	1
46977	3	5
46979	1	4
47404	1	1
47567	1	1
47905	1	1
47909	1	4
47920	1	1
47923	10	21
47926	4	7
47950	1	4
47959	1	1
47960	67	111
47997	5	8
<b>Totals</b>	<b>481</b>	<b>960</b>



# DIVISION OF FAMILY RESOURCES

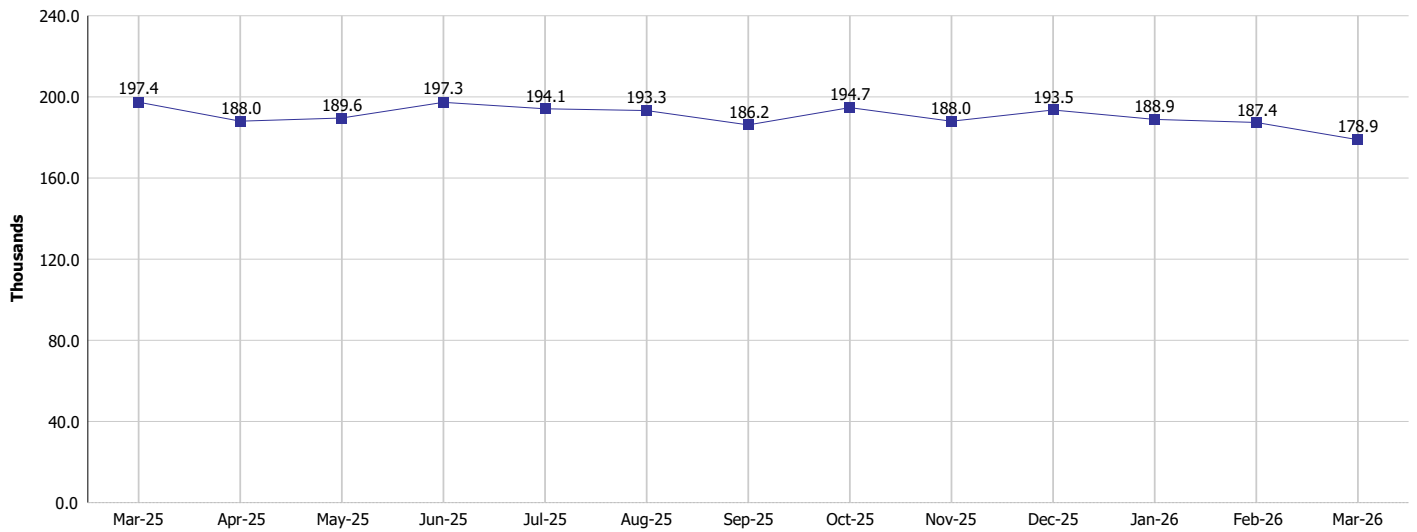
## Monthly Management Report

Reporting Month: March 2026

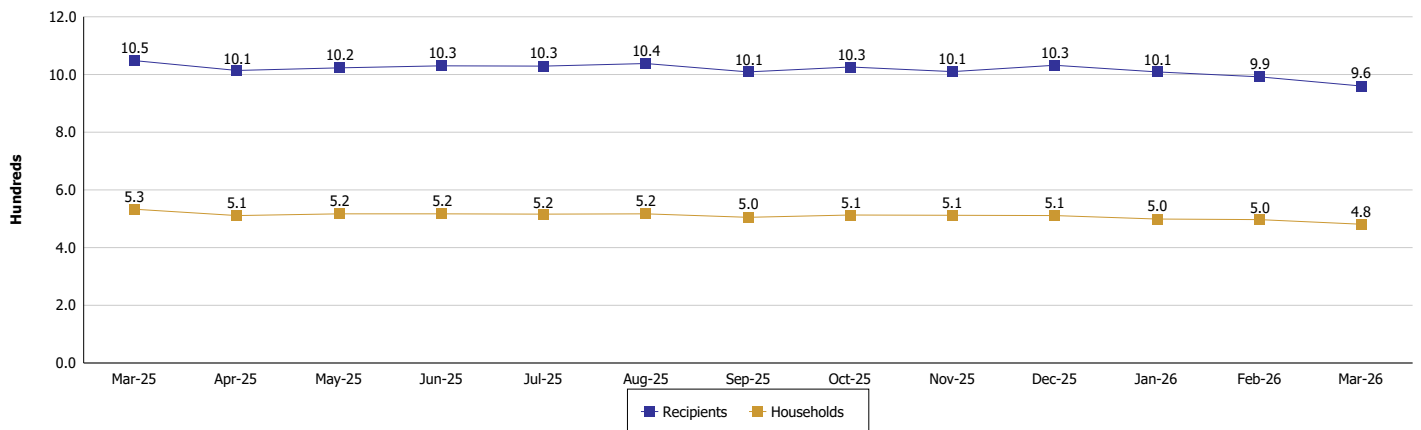
Location: Carroll County

### SUPPLEMENTAL NUTRITION ASSISTANCE PROGRAM (SNAP)

SNAP Issuance



SNAP Households and Recipients





## DIVISION OF FAMILY RESOURCES

### Monthly Management Report

Reporting Month: March 2026

Location: Carroll County

#### HIP 2.0 and SNAP

	March 2026	February 2026	March 2025	Annual Change
Total HIP 2.0 Members	1,148	1,163	1,501	-23.52%
HIP Members also SNAP Recipients	277	300	345	-19.71%
Percentage HIP Members SNAP Recipients	24.1%	25.8%	23.0%	1.14
HIP Members SNAP ABAWDs	36	41	15	140.00%
Percentage HIP Members SNAP ABAWDs	3.1%	3.5%	1.0%	2.1



## DIVISION OF FAMILY RESOURCES

### Monthly Management Report

Reporting Month: March 2026

Location: Carroll County

#### INDIANA MANPOWER PLACEMENT AND COMPREHENSIVE TRAINING (IMPACT)

	March 2026	February 2026	March 2025	Annual Change
Number of IMPACT cases	0	0	0	
Number of TANF IMPACT adults	0	0	0	
Number of SNAP IMPACT Cases	0	0	0	
Total number of adults employed	5	6	3	66.67%
Number of TANF IMPACT adults newly employed (within past 30 days)	0	0	0	
Number of SNAP IMPACT adults employed	5	6	3	66.67%
Total number of adults ineligible due to employment	4	1	2	100.00%
Number of TANF adults ineligible due to employment	0	1	0	
Number of SNAP adults ineligible due to employment	4	0	2	100.00%

**IMPACT Caseloads**  
(SNAP, TANF, Total Caseload)

