



## DIVISION OF FAMILY RESOURCES

# Brown County Monthly Management Report March 2026

### State of Indiana

Mike Braun  
Governor

### Family and Social Services Administration

Mitch Roob  
Secretary

### Division of Family Resources

Sunshine Beam  
Director

For questions regarding data on this report contact:  
[office.Communications@fssa.IN.gov](mailto:office.Communications@fssa.IN.gov)



## State of Indiana

Published April 2026



## DIVISION OF FAMILY RESOURCES

### Monthly Management Report

Reporting Month: March 2026

Location: Brown County

#### TEMPORARY ASSISTANCE FOR NEEDY FAMILIES (TANF)

Child-Only and One-Parent Families	March 2026	February 2026	March 2025	Annual Change
Number of families receiving TANF Grants	7	8	12	-41.67%
Total number of grant recipients	13	21	29	-55.17%
Number of adult grant recipients	2	3	4	-50.00%
Number of child grant recipients	11	18	25	-56.00%
Total payments	\$2,445	\$3,422	\$5,097	-52.03%
Average payment per case	\$349.29	\$427.75	\$424.75	-17.77%
Average payment per recipient	\$188.08	\$162.95	\$175.76	7.01%
Number of cases with benefits reduced to zero	0	0	0	0%
Number of recipients with benefits reduced to zero	0	0	0	0%
Number of adult recipients with benefit reduced to zero	0	0	0	0%
Number of child recipients with benefit reduced to zero	0	0	0	0%

Pregnancy TANF Families	March 2026	February 2026	March 2025	Annual Change
Number of families receiving TANF Grants	0	0	0	0%
Total number of grant recipients	0	0	0	0%
Total payments	\$0.00	\$0.00	\$0.00	0%
Average payment per case	\$0.00	\$0.00	\$0.00	0.00%
Average payment per recipient	\$0.00	\$0.00	\$0.00	0.00%
Number of cases with benefits reduced to zero	0	0	0	0%
Number of recipients with benefits reduced to zero	0	0	0	0%



## DIVISION OF FAMILY RESOURCES

### Monthly Management Report

Two-Parent Families	March 2026	February 2026	March 2025	Annual Change
Number of families receiving TANF Grants	0	0	0	0%
Total number of grant recipients	0	0	0	0%
Number of adult grant recipients	0	0	0	0%
Number of child grant recipients	0	0	0	0%
Total payments	\$0	\$0	\$0	0%
Average payment per case	\$0.00	\$0.00	\$0.00	0.00%
Average payment per recipient	\$0.00	\$0.00	\$0.00	0.00%
Number of cases with benefits reduced to zero	0	0	0	0%
Number of recipients with benefits reduced to zero	0	0	0	0%
Number of adult recipients with benefit reduced to zero	0	0	0	0%
Number of child recipients with benefit reduced to zero	0	0	0	0%

Note: The two-parent case count includes cases in which a parent living in the home is excluded from receiving TANF benefits but whose income is used in the TANF eligibility determination.



## DIVISION OF FAMILY RESOURCES

### Monthly Management Report

Reporting Month: March 2026

Location: Brown County

#### TANF - APPLICATIONS

	March 2026	February 2026	March 2025	Annual Change
<b>Number of Applications</b>	4	13	7	-42.86%

#### TANF - RECIPIENTS BY ZIP CODE

ZIP Code	Households	Recipients
46164	2	3
46181	1	1
47448	4	9
<b>Total</b>	<b>7</b>	<b>13</b>



## DIVISION OF FAMILY RESOURCES

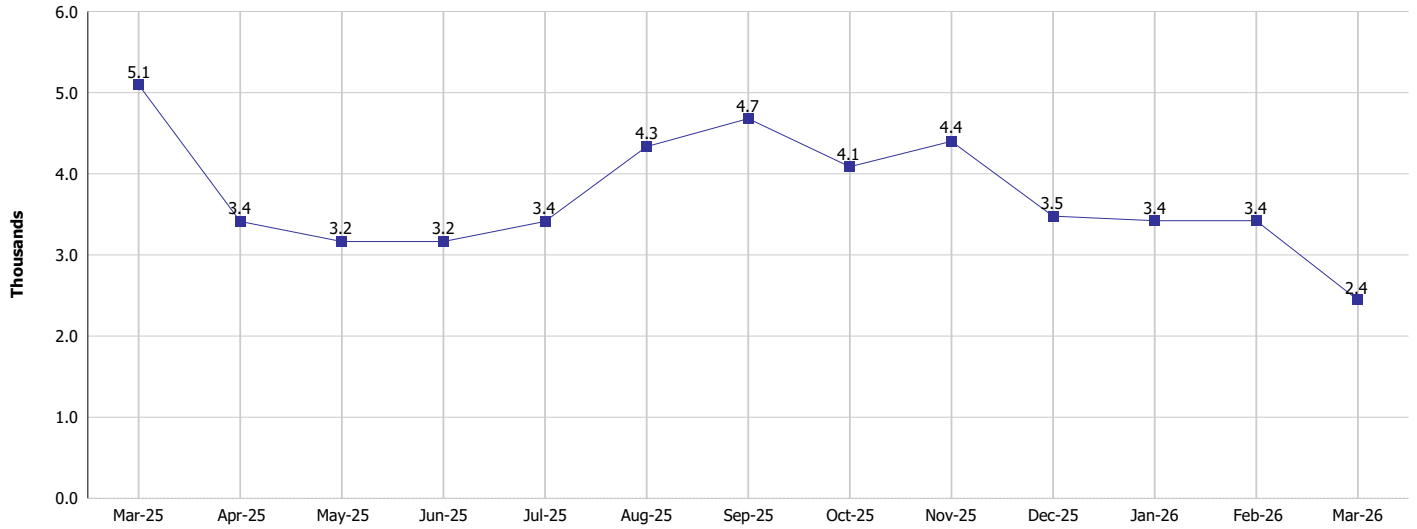
### Monthly Management Report

Reporting Month: March 2026

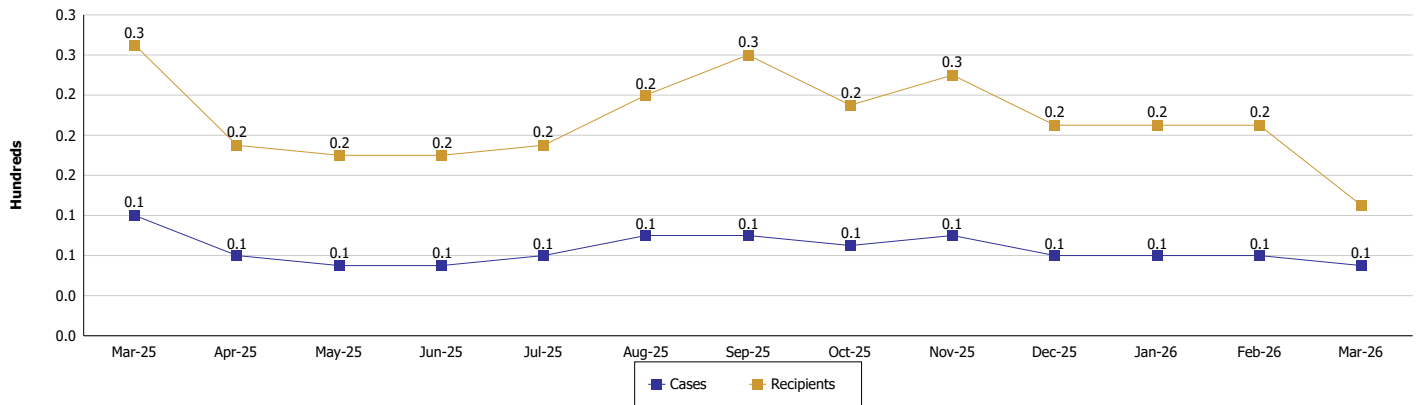
Location: Brown County

#### TEMPORARY ASSISTANCE FOR NEEDY FAMILIES (TANF)

TANF Regular And TANF Two-Parent Cash Assistance



TANF Cases and Recipients  
(TANF Regular and TANF Two-Parent)





**DIVISION OF FAMILY RESOURCES**

**Monthly Management Report**

Reporting Month: March 2026

Location: Brown County

**SUPPLEMENTAL NUTRITION ASSISTANCE PROGRAM (SNAP)**

	March 2026	February 2026	March 2025	Annual Change
Total issuance	\$112,487	\$115,739	\$124,944	-9.97%
Number of households receiving SNAP benefits	339	343	360	-5.83%
Number of recipients	594	612	667	-10.94%
Average issuance per household	\$331.82	\$337.43	\$347.07	-4.39%
Average issuance per recipient	\$189.37	\$189.12	\$187.32	1.09%
Number of Applications	36	44	48	-25%



## DIVISION OF FAMILY RESOURCES

### Monthly Management Report

Reporting Month: March 2026 Location: Brown County

#### SNAP - RECIPIENTS BY ZIP CODE

ZIP Code	Households	Recipients
46131	1	1
46160	65	110
46164	33	68
46181	21	41
47170	1	1
47201	20	32
47235	10	15
47265	1	3
47403	1	1
47448	183	316
47468	2	3
None	1	3
<b>Totals</b>	<b>339</b>	<b>594</b>



# DIVISION OF FAMILY RESOURCES

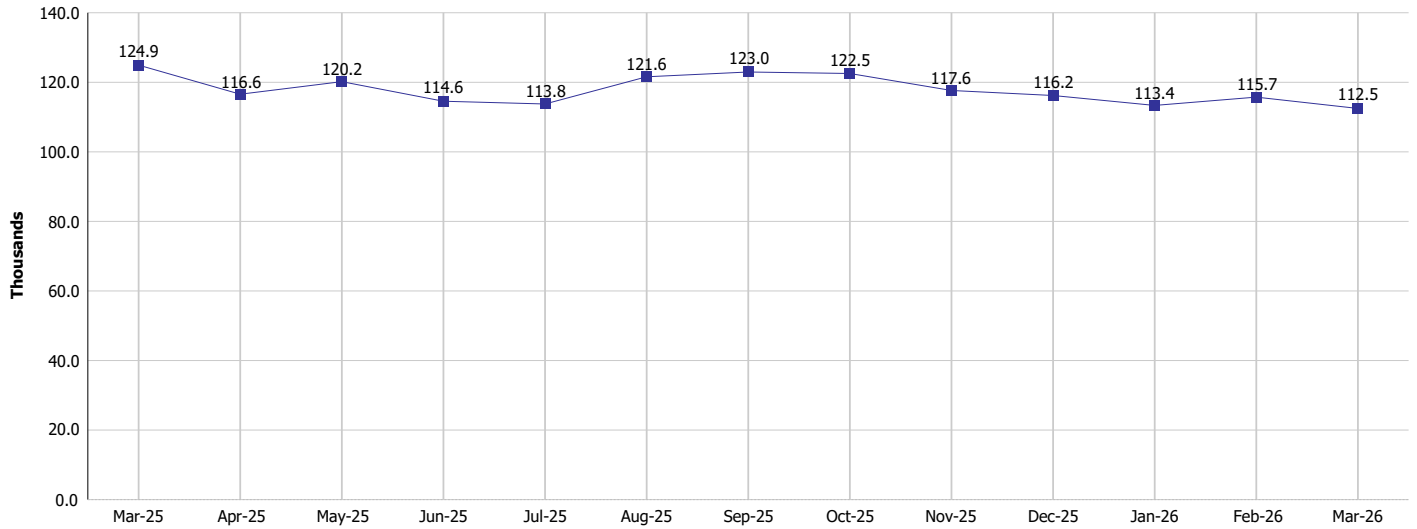
## Monthly Management Report

Reporting Month: March 2026

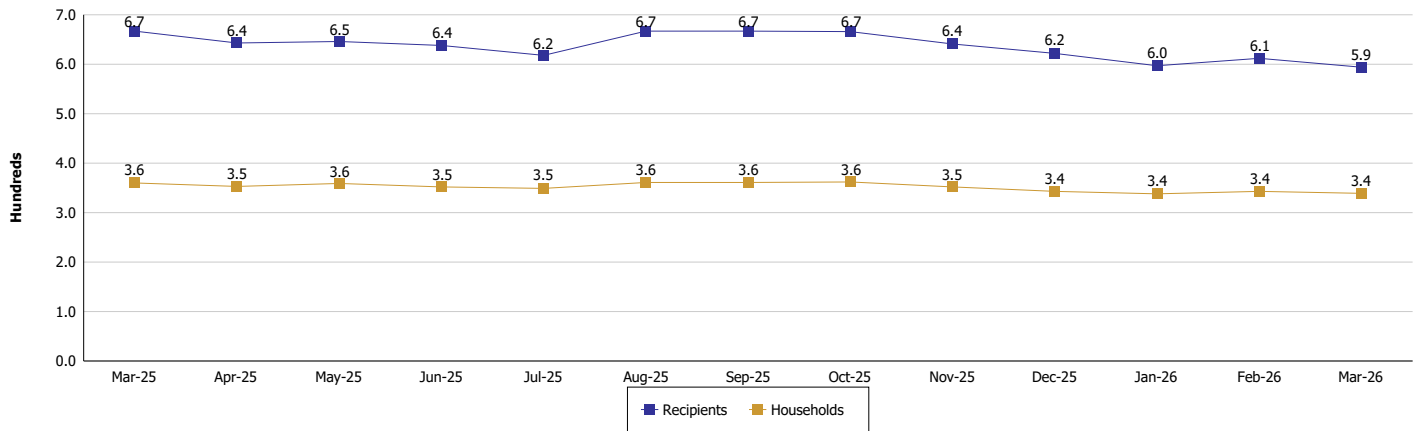
Location: Brown County

### SUPPLEMENTAL NUTRITION ASSISTANCE PROGRAM (SNAP)

SNAP Issuance



SNAP Households and Recipients





## DIVISION OF FAMILY RESOURCES

### Monthly Management Report

Reporting Month: March 2026

Location: Brown County

#### HIP 2.0 and SNAP

	March 2026	February 2026	March 2025	Annual Change
Total HIP 2.0 Members	951	969	1,177	-19.20%
HIP Members also SNAP Recipients	179	188	230	-22.17%
Percentage HIP Members SNAP Recipients	18.8%	19.4%	19.5%	-0.72
HIP Members SNAP ABAWDs	19	21	14	35.71%
Percentage HIP Members SNAP ABAWDs	2.0%	2.2%	1.2%	0.8



**DIVISION OF FAMILY RESOURCES**

**Monthly Management Report**

Reporting Month: March 2026

Location: Brown County

**INDIANA MANPOWER PLACEMENT AND COMPREHENSIVE TRAINING (IMPACT)**

	March 2026	February 2026	March 2025	Annual Change
Number of IMPACT cases	0	0	0	
Number of TANF IMPACT adults	0	0	0	
Number of SNAP IMPACT Cases	0	0	0	
Total number of adults employed	3	1	0	
Number of TANF IMPACT adults newly employed (within past 30 days)	0	0	0	
Number of SNAP IMPACT adults employed	3	1	0	
Total number of adults ineligible due to employment	0	0	1	-100.00%
Number of TANF adults ineligible due to employment	0	0	0	
Number of SNAP adults ineligible due to employment	0	0	1	-100.00%

**IMPACT Caseloads**  
(SNAP, TANF, Total Caseload)

