



## DIVISION OF FAMILY RESOURCES

# Blackford County Monthly Management Report March 2026

### State of Indiana

Mike Braun  
Governor

### Family and Social Services Administration

Mitch Roob  
Secretary

### Division of Family Resources

Sunshine Beam  
Director

For questions regarding data on this report contact:  
[office.Communications@fssa.IN.gov](mailto:office.Communications@fssa.IN.gov)



## State of Indiana

Published April 2026



## DIVISION OF FAMILY RESOURCES

### Monthly Management Report

Reporting Month: March 2026

Location: Blackford County

#### TEMPORARY ASSISTANCE FOR NEEDY FAMILIES (TANF)

Child-Only and One-Parent Families	March 2026	February 2026	March 2025	Annual Change
Number of families receiving TANF Grants	12	11	6	100.00%
Total number of grant recipients	22	20	11	100.00%
Number of adult grant recipients	3	2	2	50.00%
Number of child grant recipients	19	18	9	111.11%
Total payments	\$4,155	\$3,746	\$1,916	116.86%
Average payment per case	\$346.25	\$340.55	\$319.33	8.43%
Average payment per recipient	\$188.86	\$187.30	\$174.18	8.43%
Number of cases with benefits reduced to zero	0	0	0	0%
Number of recipients with benefits reduced to zero	0	0	0	0%
Number of adult recipients with benefit reduced to zero	0	0	0	0%
Number of child recipients with benefit reduced to zero	0	0	0	0%

Pregnancy TANF Families	March 2026	February 2026	March 2025	Annual Change
Number of families receiving TANF Grants	0	0	0	0%
Total number of grant recipients	0	0	0	0%
Total payments	\$0.00	\$0.00	\$0.00	0%
Average payment per case	\$0.00	\$0.00	\$0.00	0.00%
Average payment per recipient	\$0.00	\$0.00	\$0.00	0.00%
Number of cases with benefits reduced to zero	0	0	0	0%
Number of recipients with benefits reduced to zero	0	0	0	0%



## DIVISION OF FAMILY RESOURCES

### Monthly Management Report

Two-Parent Families	March 2026	February 2026	March 2025	Annual Change
Number of families receiving TANF Grants	0	0	0	0%
Total number of grant recipients	0	0	0	0%
Number of adult grant recipients	0	0	0	0%
Number of child grant recipients	0	0	0	0%
Total payments	\$0	\$0	\$0	0%
Average payment per case	\$0.00	\$0.00	\$0.00	0.00%
Average payment per recipient	\$0.00	\$0.00	\$0.00	0.00%
Number of cases with benefits reduced to zero	0	0	0	0%
Number of recipients with benefits reduced to zero	0	0	0	0%
Number of adult recipients with benefit reduced to zero	0	0	0	0%
Number of child recipients with benefit reduced to zero	0	0	0	0%

Note: The two-parent case count includes cases in which a parent living in the home is excluded from receiving TANF benefits but whose income is used in the TANF eligibility determination.



## DIVISION OF FAMILY RESOURCES

### Monthly Management Report

Reporting Month: March 2026

Location: Blackford County

#### TANF - APPLICATIONS

	March 2026	February 2026	March 2025	Annual Change
<b>Number of Applications</b>	7	6	3	133.33%

#### TANF - RECIPIENTS BY ZIP CODE

ZIP Code	Households	Recipients
47336	1	2
47348	8	17
47359	3	3
<b>Total</b>	<b>12</b>	<b>22</b>



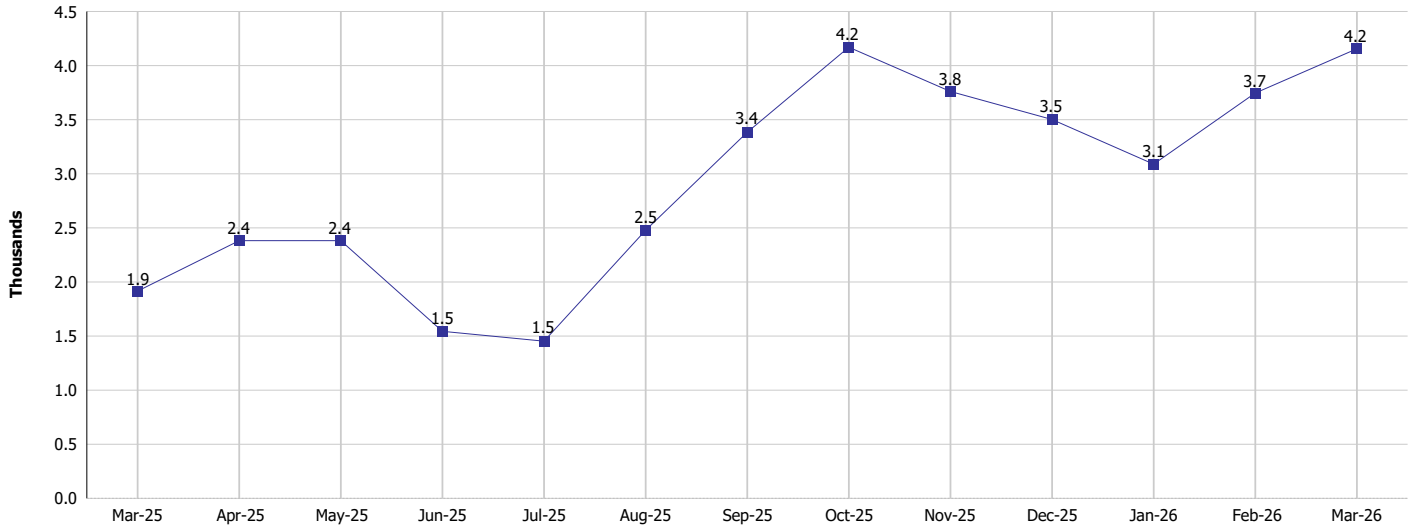
# DIVISION OF FAMILY RESOURCES

## Monthly Management Report

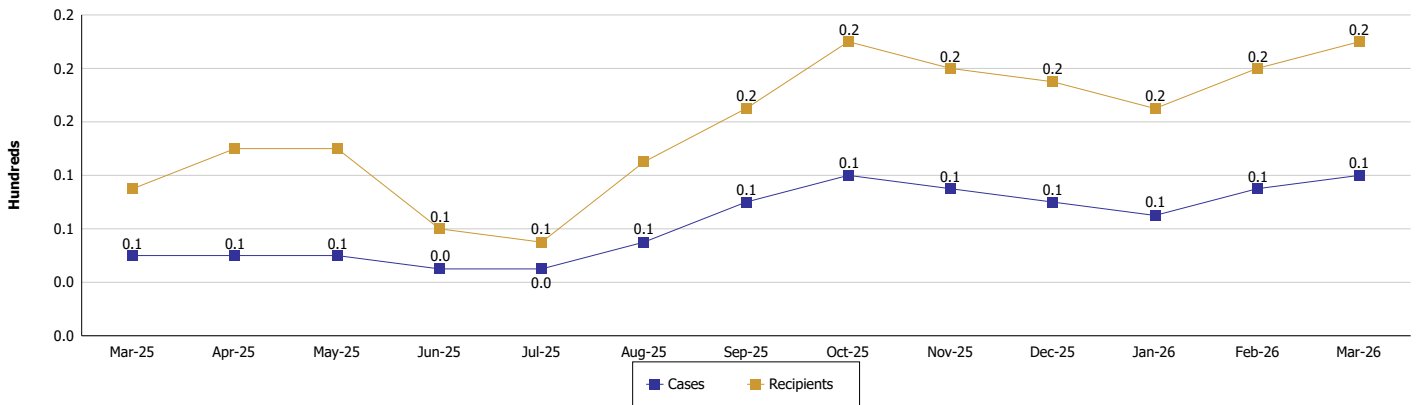
Reporting Month: March 2026 Location: Blackford County

### TEMPORARY ASSISTANCE FOR NEEDY FAMILIES (TANF)

TANF Regular And TANF Two-Parent Cash Assistance



TANF Cases and Recipients  
(TANF Regular and TANF Two-Parent)





**DIVISION OF FAMILY RESOURCES**

**Monthly Management Report**

Reporting Month: March 2026

Location: Blackford County

**SUPPLEMENTAL NUTRITION ASSISTANCE PROGRAM (SNAP)**

	March 2026	February 2026	March 2025	Annual Change
Total issuance	\$235,509	\$242,744	\$252,641	-6.78%
Number of households receiving SNAP benefits	652	658	675	-3.41%
Number of recipients	1,261	1,294	1,391	-9.35%
Average issuance per household	\$361.21	\$368.91	\$374.28	-3.49%
Average issuance per recipient	\$186.76	\$187.59	\$181.63	2.82%
Number of Applications	63	54	63	0.00%



## DIVISION OF FAMILY RESOURCES

### Monthly Management Report

Reporting Month: March 2026 Location: Blackford County

#### SNAP - RECIPIENTS BY ZIP CODE

ZIP Code	Households	Recipients
46031	1	3
46952	1	4
46989	1	1
47336	8	22
47348	511	994
47359	129	236
None	1	1
<b>Totals</b>	<b>652</b>	<b>1,261</b>



# DIVISION OF FAMILY RESOURCES

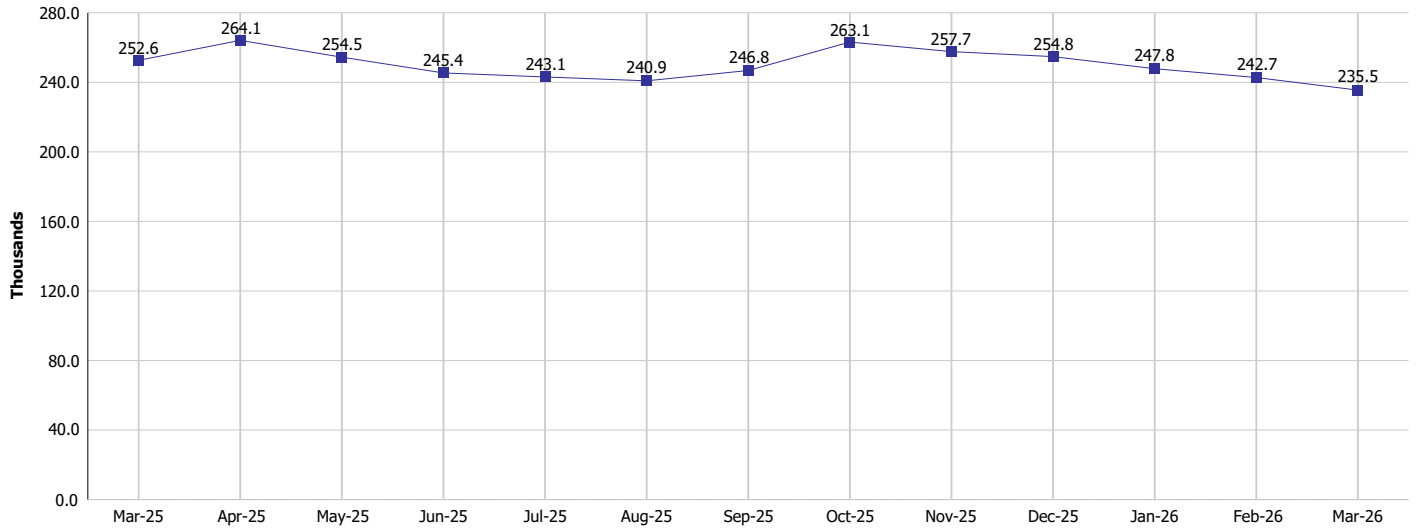
## Monthly Management Report

Reporting Month: March 2026

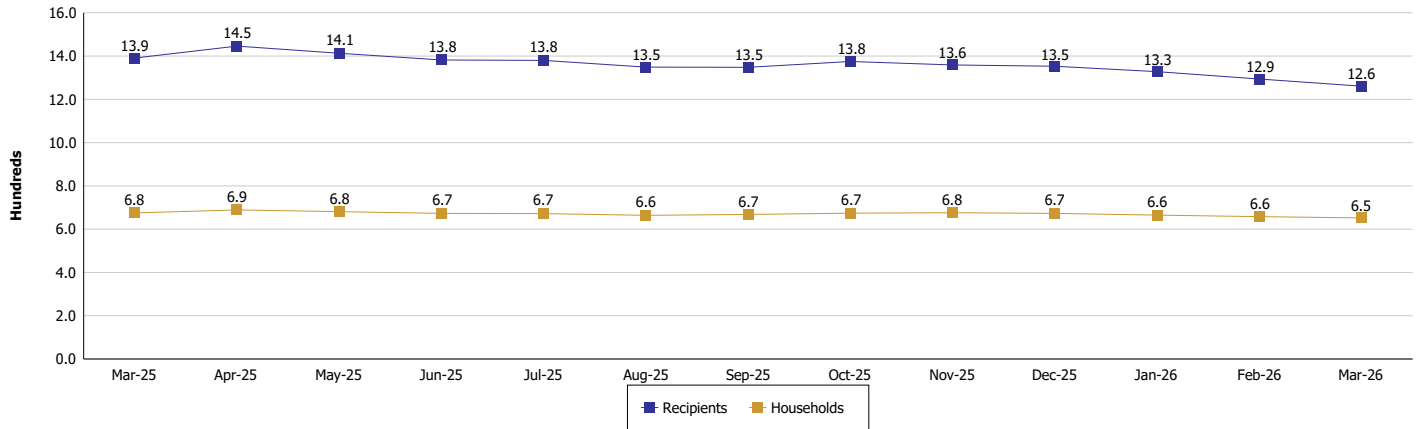
Location: Blackford County

### SUPPLEMENTAL NUTRITION ASSISTANCE PROGRAM (SNAP)

SNAP Issuance



SNAP Households and Recipients





## DIVISION OF FAMILY RESOURCES

### Monthly Management Report

Reporting Month: March 2026

Location: Blackford County

#### HIP 2.0 and SNAP

	March 2026	February 2026	March 2025	Annual Change
Total HIP 2.0 Members	1,139	1,160	1,441	-20.96%
HIP Members also SNAP Recipients	374	378	430	-13.02%
Percentage HIP Members SNAP Recipients	32.8%	32.6%	29.8%	3.00
HIP Members SNAP ABAWDs	33	33	8	312.50%
Percentage HIP Members SNAP ABAWDs	2.9%	2.8%	0.6%	2.3



**DIVISION OF FAMILY RESOURCES**

**Monthly Management Report**

Reporting Month: March 2026

Location: Blackford County

**INDIANA MANPOWER PLACEMENT AND COMPREHENSIVE TRAINING (IMPACT)**

	March 2026	February 2026	March 2025	Annual Change
Number of IMPACT cases	0	2	0	
Number of TANF IMPACT adults	0	1	0	
Number of SNAP IMPACT Cases	0	1	0	
Total number of adults employed	8	3	4	100.00%
Number of TANF IMPACT adults newly employed (within past 30 days)	0	0	0	
Number of SNAP IMPACT adults employed	8	3	4	100.00%
Total number of adults ineligible due to employment	0	2	7	-100.00%
Number of TANF adults ineligible due to employment	0	0	0	
Number of SNAP adults ineligible due to employment	0	2	7	-100.00%

**IMPACT Caseloads**  
(SNAP, TANF, Total Caseload)

