

**INDIANA DEPARTMENT OF TRANSPORTATION**

**INTER-DEPARTMENT COMMUNICATION  
Standards Section -- Room N642**

September 25, 1998

**DESIGN MEMORANDUM No. 98-07  
TECHNICAL ADVISORY**

**TO: All Design, Operations, and District Personnel, and  
Consultants**

**FROM:** \_\_\_\_\_  
**Richard L. Van Cleave**  
**Design Policy Engineer,**  
**Technical Services Division**

**SUBJECT: Backfilling Behind Bridge End Bents**

**EFFECTIVE: December 15, 1998, Letting**

On September 17, 1998, the Standards Committee approved a change in backfilling behind end bents. Such backfill shall be flowable mortar instead of B borrow for structure backfill. The end bent drain pipe shall therefore be eliminated. The contract quantity for B borrow for structure backfill must be adjusted to eliminate the B borrow required behind the end bents. An additional pay item, Flowable Mortar, code no. 213-52830, is required. The quantity is equal to the cubic meters (cubic yards) of B borrow for structure backfill originally required behind the end bents. The pay item, Pipe, End Bent Drain, 150 mm (Pipe, End Bent Drain, 6 in.) must be eliminated from the contract.

The implementation schedule for this change is as follows:

December 15, 1998, Letting. Include a copy of attached recurring special provision 213-B-137 into the special provisions.

December 15, 1998, through April 20, 1999, Lettings. Include a copy of the attached recurring plan detail 213-B-137d into the contract documents. Do not call for metric standard drawing 211-BFIL-03 approved 1-04-99 (english bridge standard drawing S1 revised 12-01-86).

December 15, 1998, Letting and After. Revise the Schedule of Pay Items as required.

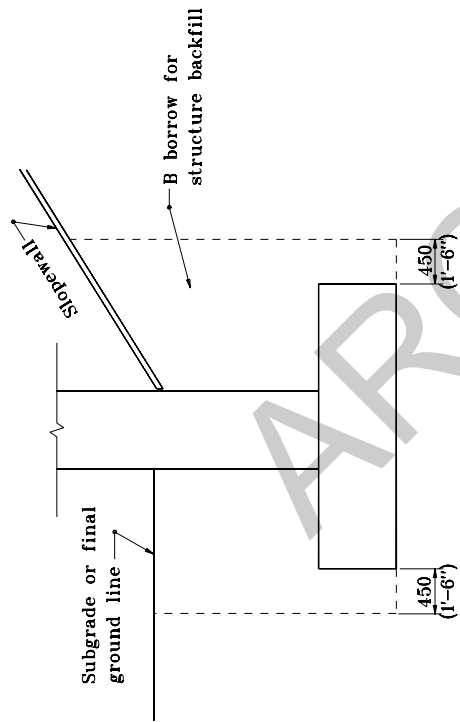
January 20, 1999, Letting and After. Revise the plans as required.

May 18, 1999, Letting and After. Call for metric standard drawing 211-BFIL-03 (english bridge standard drawing S1) as revised 5-03-99 and FHWA approved 5-03-99. Do not incorporate recurring plan detail 213-B-137d into the contract documents.

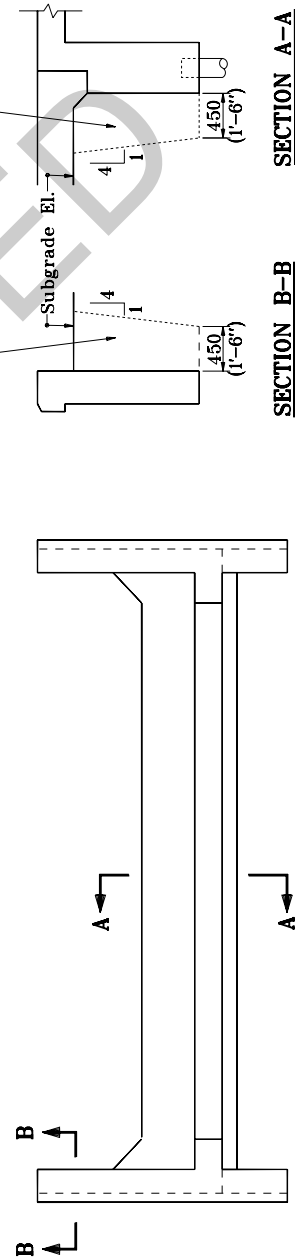
RLV:alu  
Attachments

[F:\DES\9807-ta.doc]

ARCHIVED



**SECTION - INTERIOR BENT OR PIER**



**PLAN - END BENT**