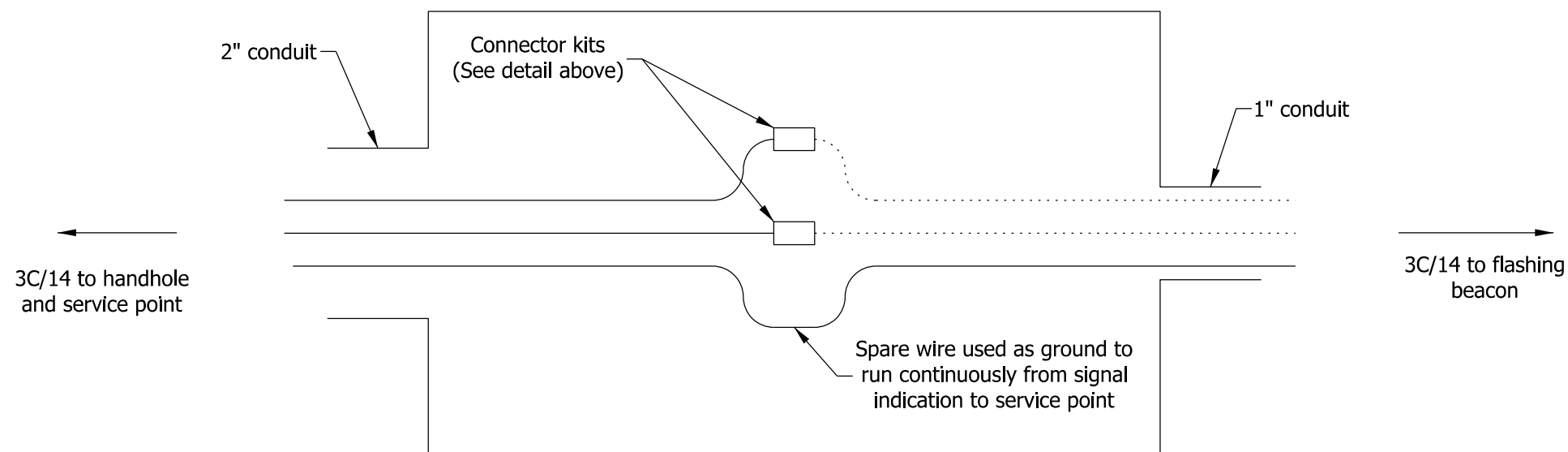
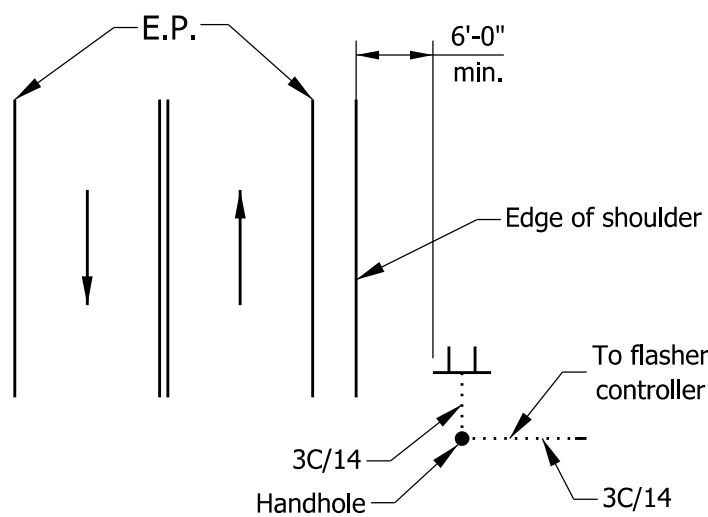


**DISCONNECT CONNECTOR KIT
TO BE USED IN DETECTOR HOUSING**

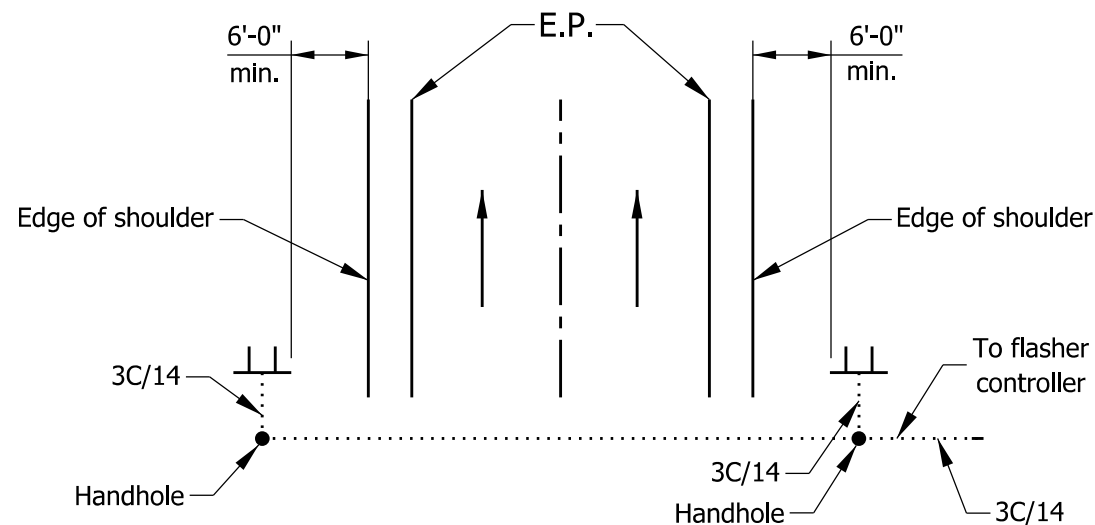


DETECTOR HOUSING CONNECTIONS DETAIL

SINGLE LANE ROADWAY



MULTI-LANE ROADWAY



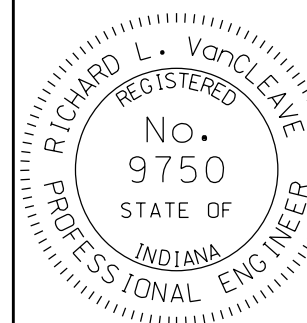
TYPICAL FLASHING BEACON CONFIGURATION

INDIANA DEPARTMENT OF TRANSPORTATION

FLASHING BEACON WITH
WARNING SIGN DETAILS

SEPTEMBER 2012

STANDARD DRAWING NO. E 805-SGFB-02



/s/ Richard L. VanCleave 09/04/12

SUPERVISOR, ROADWAY STANDARDS DATE

/s/ Mark A. Miller 09/04/12

CHIEF ENGINEER DATE