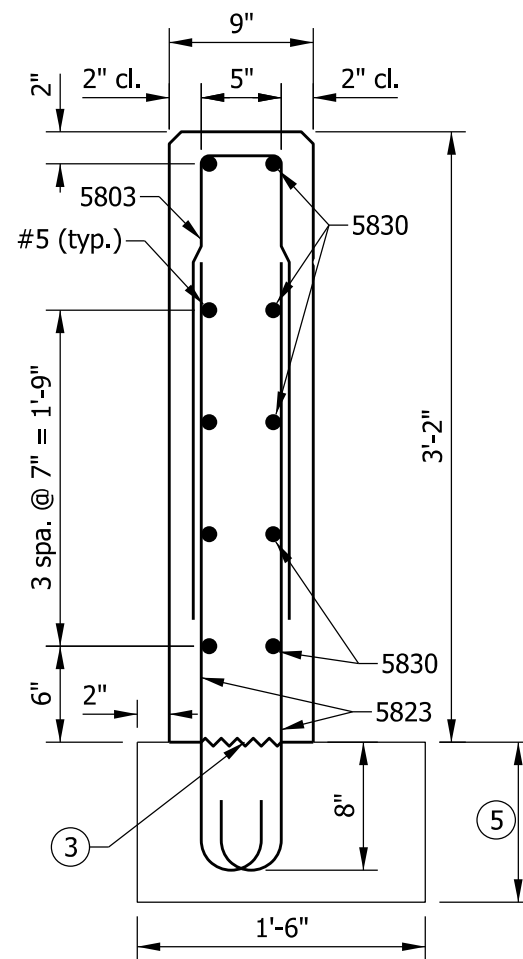
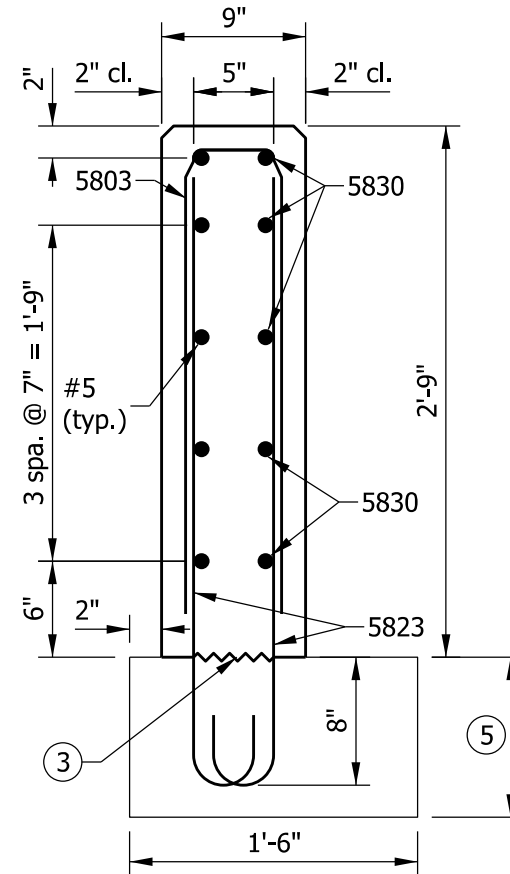


SECTION C-C



SECTION D-D



SECTION E-E

NOTES

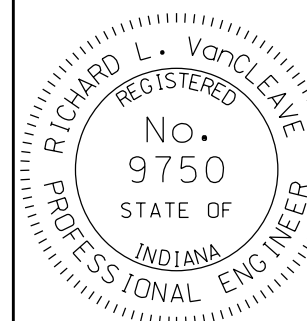
1. See Standard Drawing E 706-TTTF-01 for elevation and plan.
2. All chamfered edges shall be 3/4".
- ③ Construction joint type A. See Standard Drawing E 702-CJTA-01 for details.
4. See Standard Drawing E 706-TTTF-04 for reinforcing-bar diagrams.
- ⑤ RCBA extension for bridge railing transition type TTF-2. See Standard Drawing E 609-TBAE-02 for details.

INDIANA DEPARTMENT OF TRANSPORTATION

CONCRETE BRIDGE RAILING
TRANSITION, TTF-2

SEPTEMBER 2012

STANDARD DRAWING NO. E 706-TTTF-03



/s/ *Richard L. VanCleave* 09/04/12

SUPERVISOR, ROADWAY STANDARDS DATE

/s/ *Mark A. Miller* 09/04/12

CHIEF ENGINEER DATE