

10.7 m wood pole class V

25 mm weatherhead service entrance

300
300
max.

Power cable (drip loop)

25 conduit

Two hole pipe straps
or 20 mm S.S. bands
with conduit hangers
every 1.5 m (max. spacing)

Meter (if required)

Ground wire in
13 dia. conduit

25 hub plate
and close nipple

Entrance switch

Hub plate

50 conduit

Two hole steel pipe straps
or 20 mm S.S. bands with
conduit hangers.

1.2 m

600

150-300

600

Ground rod

300
min.

All dimensions are in mm unless otherwise specified.

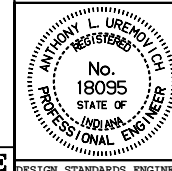
INDIANA DEPARTMENT OF TRANSPORTATION

SIGNAL SERVICE

ON WOOD POLE

SEPTEMBER 1998

STANDARD DRAWING NO. 805-SGCO-03



/s/ Anthony L. Uremovich 9-01-98
DESIGN STANDARDS ENGINEER DATE

/s/ Donald W. Lucas 9-01-98
CHIEF HIGHWAY ENGINEER DATE

Source Sheet: NONE