

NOTES

1. Each inlet Type H includes two boxes and the connector pipe between the inlet boxes.
- ② See Standard Drawing 720-ICCA-01 thru -03 for casting type 5 details.

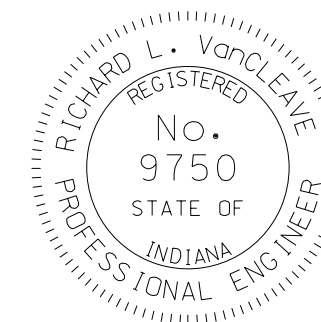
All Dimensions are in mm unless otherwise specified.

INDIANA DEPARTMENT OF TRANSPORTATION

INLET TYPE H

SEPTEMBER 2008

STANDARD DRAWING NO. 720-INST-05A



/s/ Richard L. VanCleave 09/02/08
DESIGN STANDARDS ENGINEER DATE

/s/ Mark A. Miller 09/02/08
CHIEF HIGHWAY ENGINEER DATE

DESIGN STANDARDS ENGINEER