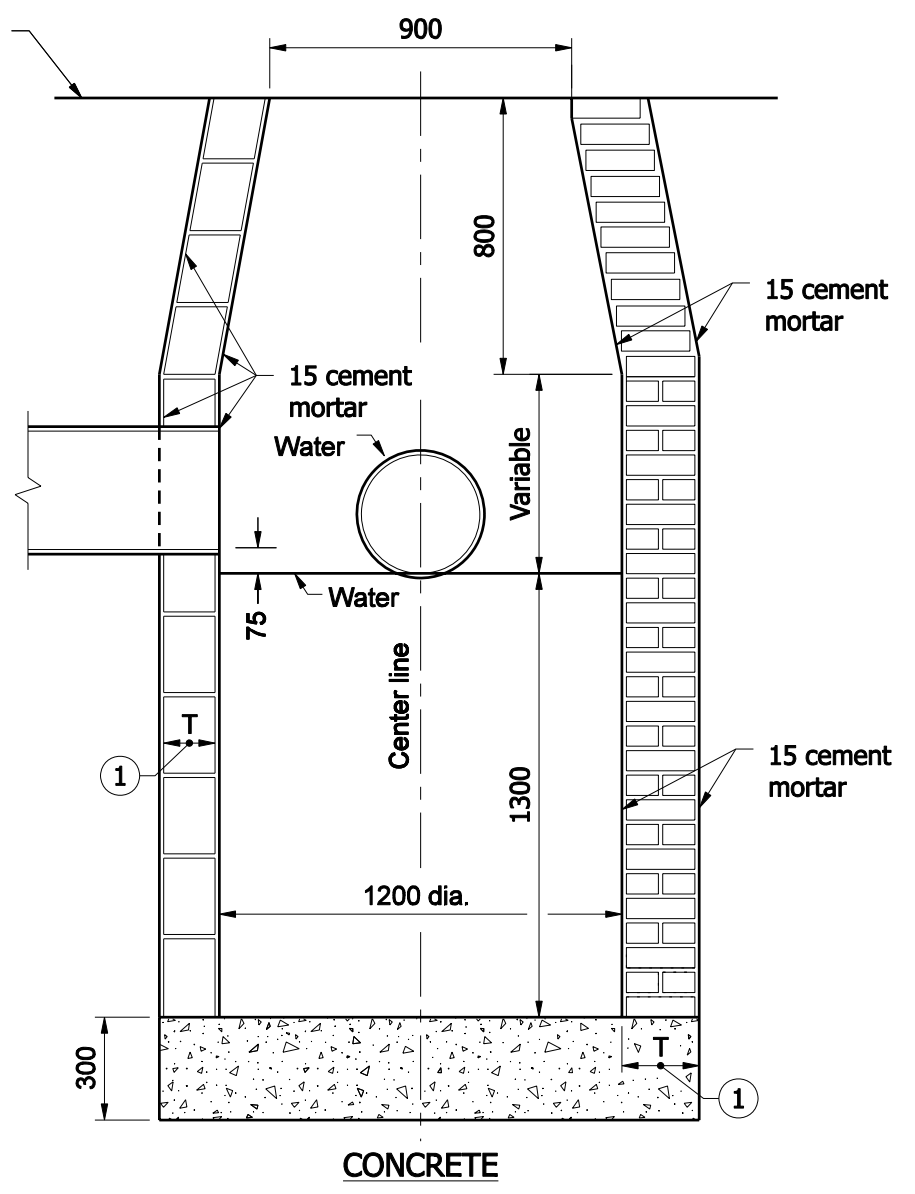
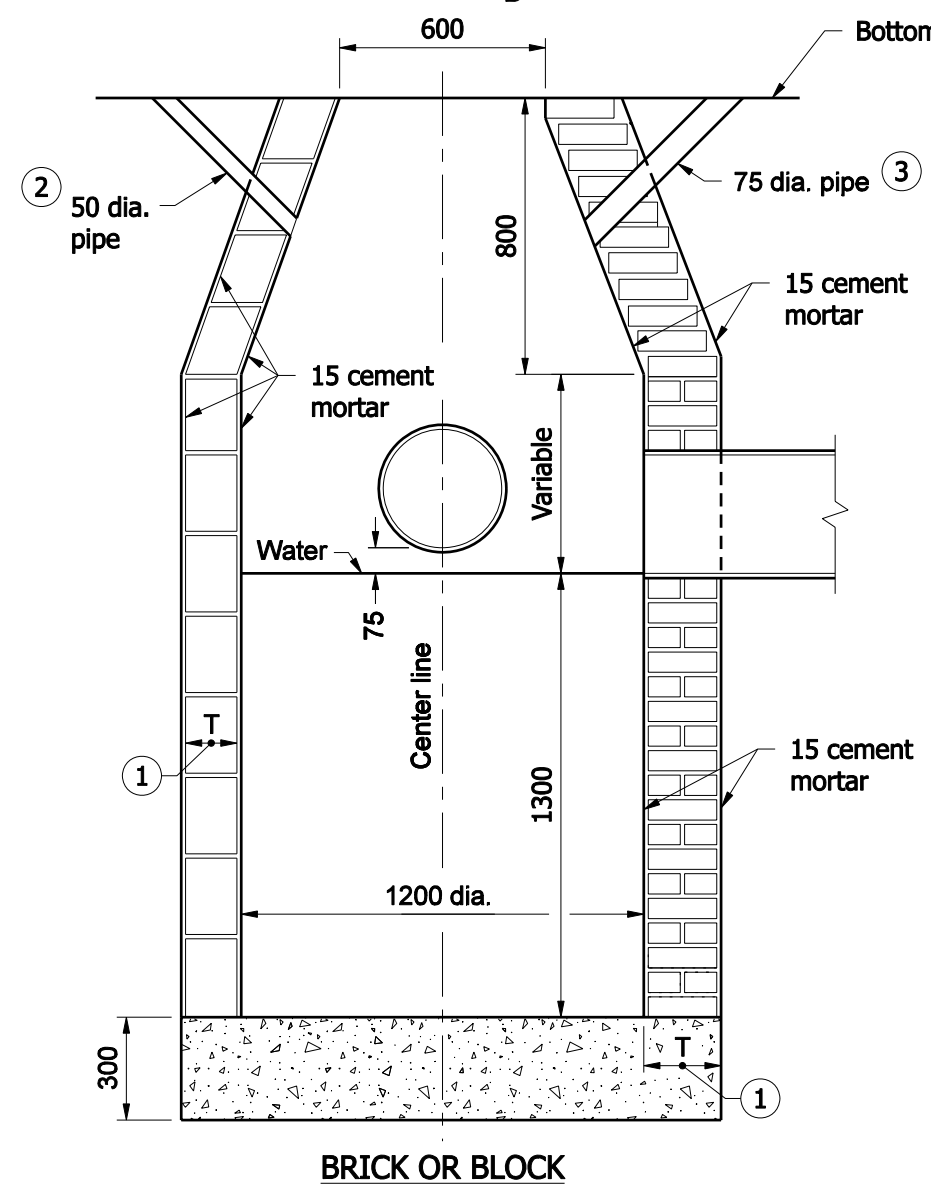


GENERAL NOTES

- ① T = 200 for brick structure
T = 150 for segmental block structure
- ② 50 pipe drain from bottom of curb to inlet. Aggregate to be placed around inlet end of pipe.
- ③ 75 min. dia. pipe to be kept open for drainage of subgrade or base until surface is placed.



All Dimensions are in mm unless otherwise specified.

INDIANA DEPARTMENT OF TRANSPORTATION	
CASTCH BASIN TYPE J	
SEPTEMBER 2008	
STANDARD DRAWING NO. 720-CBST-04	
	<p><i>/s/ Richard L. VanCleave</i> 09/02/08 DESIGN STANDARDS ENGINEER DATE</p> <p><i>/s/ Mark A. Miller</i> 09/02/08 CHIEF HIGHWAY ENGINEER DATE</p>
DESIGN STANDARDS ENGINEER	