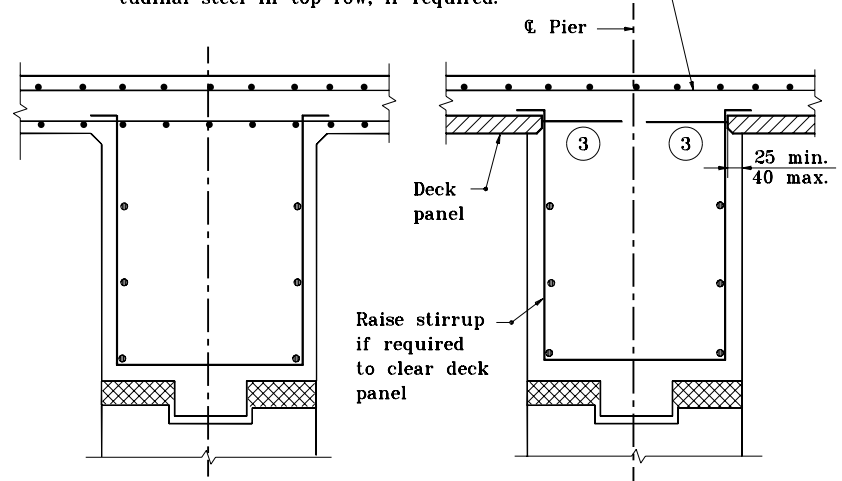


**SKEWED PANELS AT PIERS AND END BENTS**

Verify that longitudinal top steel will adequately resist negative support moment with longitudinal bottom steel omitted. Supply additional longitudinal steel in top row, if required.



**AS DETAILED**

**REVISED FOR DECK PANELS**

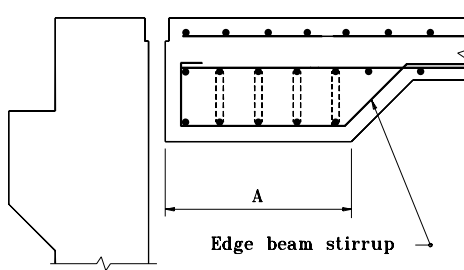
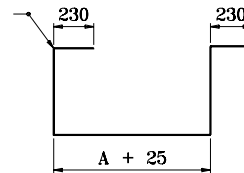
**SECTION E-E**

INTERIOR BEAM DETAIL

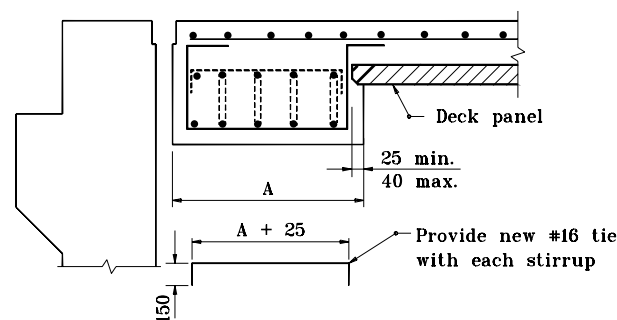
**NOTES :**

1. See Standard 707-BPDP-02 for General Notes.
  2. Details shown in Sections D-D & E-E indicate when precast deck panels are used. These details may be altered, when necessary to conform to original plan details.
- ③ Extend strands 300 mm on this edge.

Revised edge beam stirrup bending diagram. Maintain planned stirrup spacing



**AS DETAILED**



**REVISED FOR DECK PANELS**

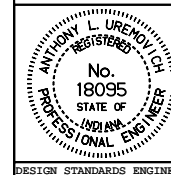
**SECTION D-D**

TRANSVERSE EDGE BEAM DETAILS

All dimensions are in mm unless otherwise specified.  
INDIANA DEPARTMENT OF TRANSPORTATION

**SKEWED PANELS  
AT PIERS AND END BENTS**  
MAY 2000

STANDARD DRAWING NO. 707-BPDP-05



/s/ Anthony L. Uremovich 5-01-00  
DESIGN STANDARDS ENGINEER DATE

/s/ Firooz Zandi 5-01-00  
CHIEF HIGHWAY ENGINEER DATE

DESIGN STANDARDS ENGINEER