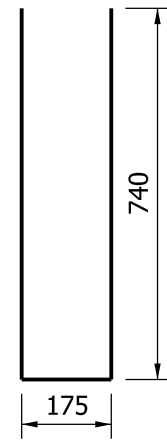
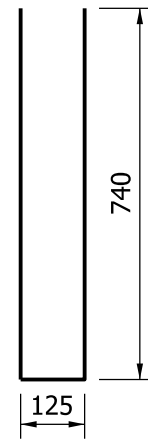


**NOTE:**

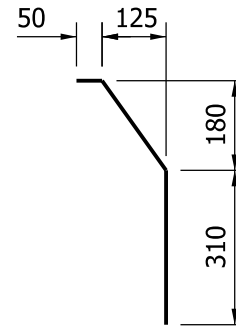
1. See Standard Drawing 706-TASE-05 for General Notes.



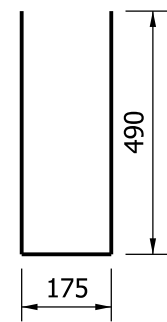
**1682b x 1660**



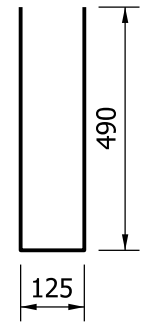
**1682b x 1610**



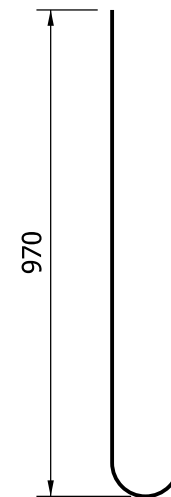
**1685 x 580**



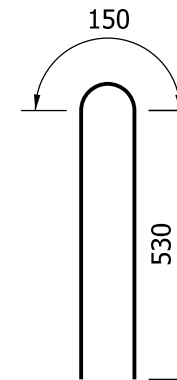
**1684a x 1160**



**1684b x 1110**



**1689 x 1160**



**1683 x 1210**

BILL OF MATERIALS			
These quantities are for one concrete bridge railing transition type TBT.			
EPOXY COATED REINFORCING STEEL			
Size and Mark	No. of Bars	Length (mm)	Mass (kg)
1682a	21	1660	
1682b	16	1610	
1683	28	1210	
1684a	21	1160	
1684b	16	1110	
1685	16	580	
#16	9	4600	
#16	1	2500	
#16	2	2000	
#16	14	1800	
Total #16 Bars			340
Total Epoxy Coated Steel			340
Concrete Class C in Railing			1.5 m <sup>3</sup>
Surface Seal			11.2 m <sup>2</sup>

All Dimensions are in mm unless otherwise specified.

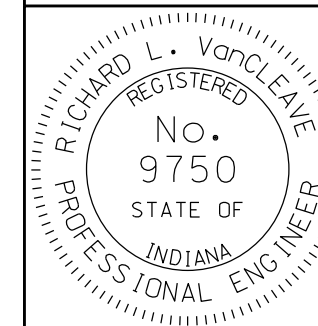
**INDIANA DEPARTMENT OF TRANSPORTATION**

**CONCRETE BRIDGE RAILING  
TRANSITION TYPE TBT**

SEPTEMBER 2011

STANDARD DRAWING NO. 706-TTBT-03

**1145 TRUCK HEIGHT THRIE BEAM/  
CONCRETE BRIDGE RAILING TRANSITION**



DESIGN STANDARDS ENGINEER

*/s/ Richard L. VanCleave* 09/01/11  
DESIGN STANDARDS ENGINEER DATE

*/s/ Mark A. Miller* 09/01/11  
CHIEF HIGHWAY ENGINEER DATE