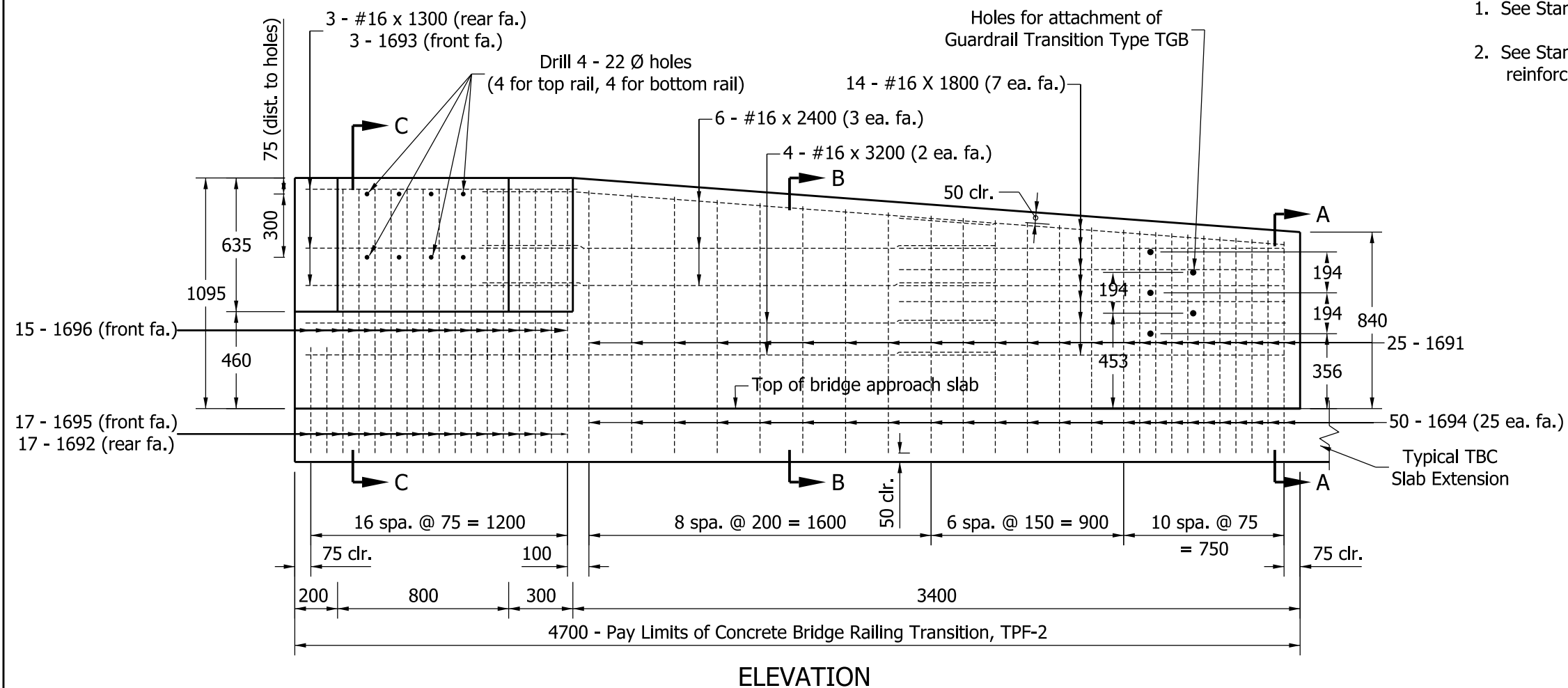
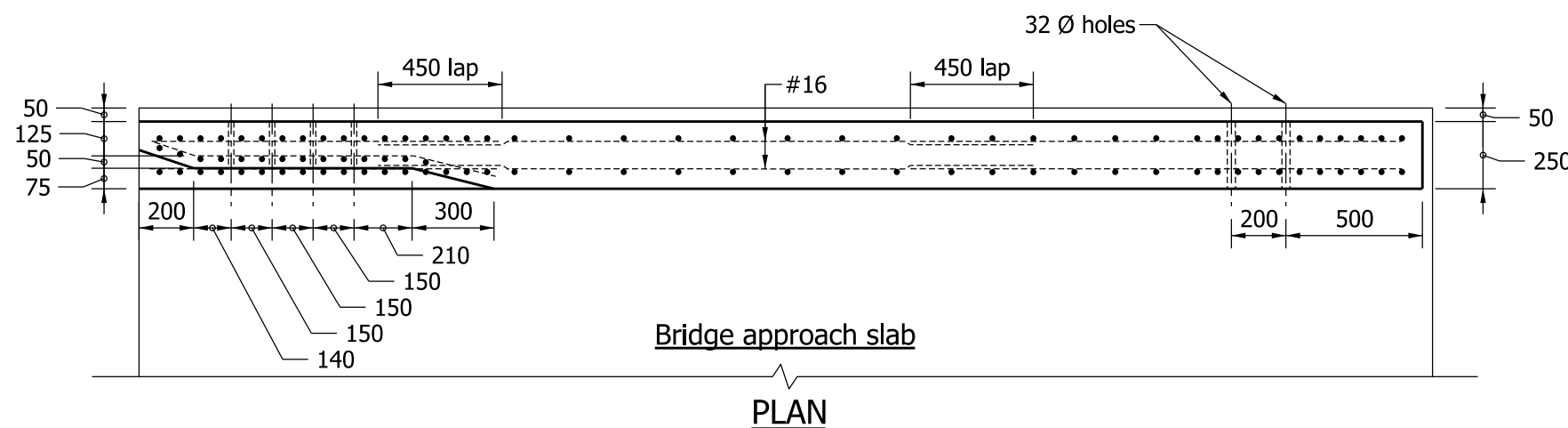


Notes:

1. See Standard Drawing 706-TTBP-09 for general notes.
2. See Standard Drawing 706-TTBP-04 for sections and reinforcing-bar diagrams.



BILL OF MATERIALS, TPF-2 EPOXY-COATED REINFORCING STEEL			
Mark / Size	No. of Bars	Total Length	Mass
1691 x 1600	25	40	
1692 x 1400	17	23.8	
1693 x 1280	3	3.84	
1694 x 1080	50	54	
1695 x 780	17	13.26	
1696 x 900	15	13.5	
#16 x 3200	4	12.8	
#16 x 2400	6	14.4	
#16 x 1800	14	25.2	
#16 x 1300	3	3.9	
Total Epoxy-Coated Reinforcing Steel		204.7 m	317 kg
MISCELLANEOUS			
Concrete, Class C			1.2 m ³
Surface Seal			11.5 m ²



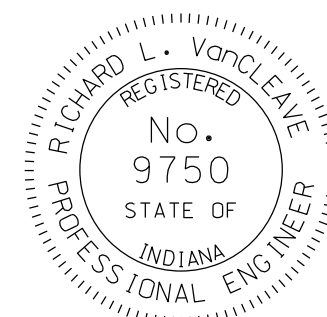
All Dimensions are in mm unless otherwise specified.

INDIANA DEPARTMENT OF TRANSPORTATION

CONCRETE BRIDGE RAILING
TRANSITION, TPF-2

SEPTEMBER 2011

STANDARD DRAWING NO. 706-TTBP-03



/s/ Richard L. VanCleave 09/01/11
DESIGN STANDARDS ENGINEER DATE

/s/ Mark A. Miller 09/01/11
CHIEF HIGHWAY ENGINEER DATE

DESIGN STANDARDS ENGINEER