




THRIE BEAM TO W-BEAM GUARDRAIL TRANSITION

NOTES:

1. See Standard Drawing E 601-MTGR-01 for Thrie Beam Guardrail details.
2. See Standard Drawing E 601-WBGC-01 for W-Beam rail details.
3. See Standard Drawings E 601-WBGA-01 thru -03 for W-Beam Guardrail assembly details.
4. Slope on Thrie Beam Transition shall be reversed when thrie beam to W-beam guardrail relative orientation is opposite to that shown hereon.

LEGEND:

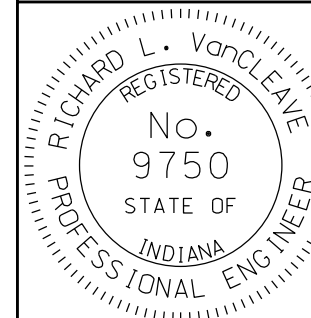
-  - W 150 x 14 Post
-  - W 360 x 33 Blockout
-  - Approved W-Beam Blockout

All Dimensions are in mm unless otherwise specified.

INDIANA DEPARTMENT OF TRANSPORTATION

**W-BEAM GUARDRAIL TO
THRIE BEAM GUARDRAIL
TRANSITION, WGT
SEPTEMBER 2011**

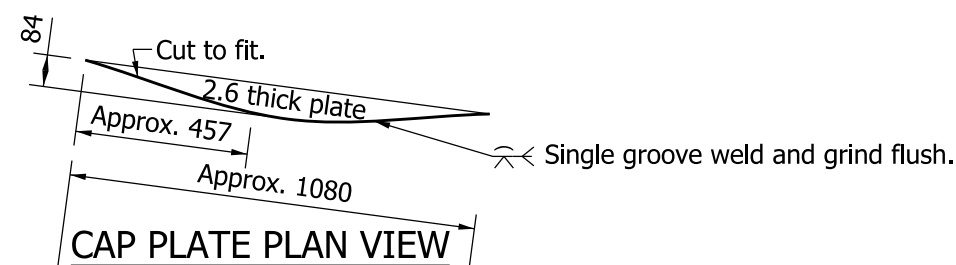
STANDARD DRAWING NO. 601-TWGT-01



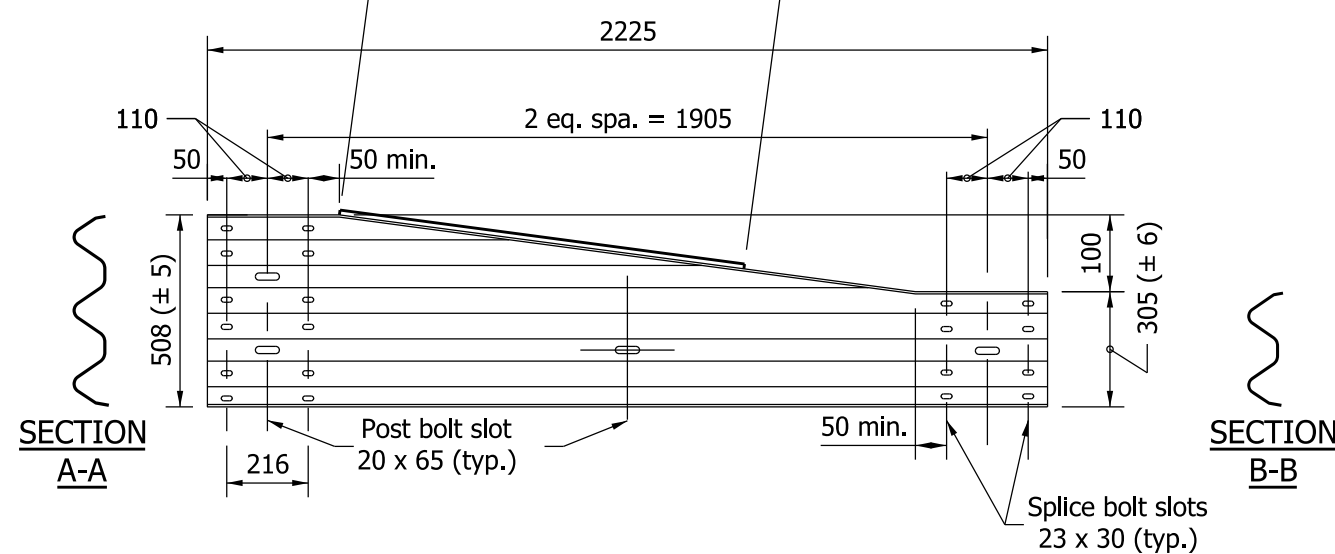
/s/ Richard L. VanCleave 09/01/11
DESIGN STANDARDS ENGINEER DATE

/s/ Mark A. Miller 09/01/11
CHIEF HIGHWAY ENGINEER DATE

DESIGN STANDARDS ENGINEER



CAP PLATE PLAN VIEW



**ELEVATION VIEW
THRIE BEAM TRANSITION RAIL**