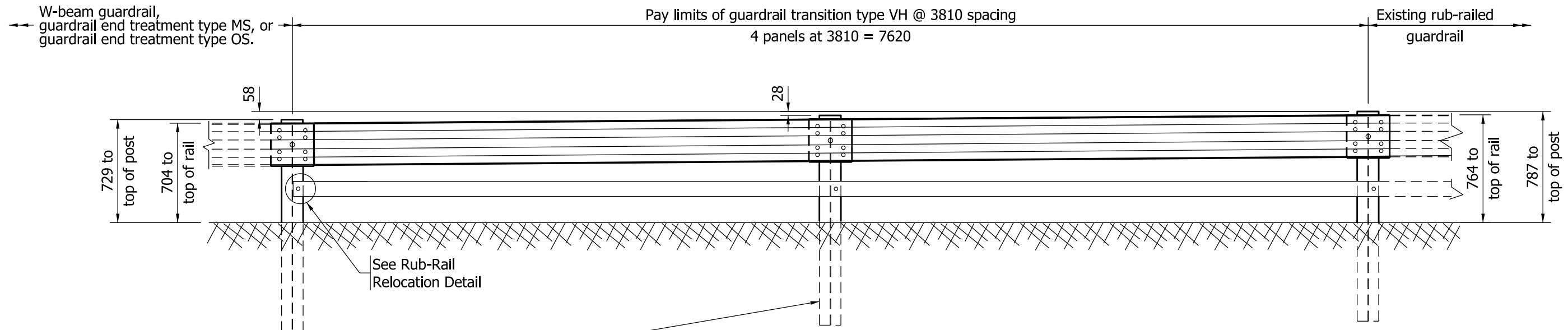


**NOTES:**

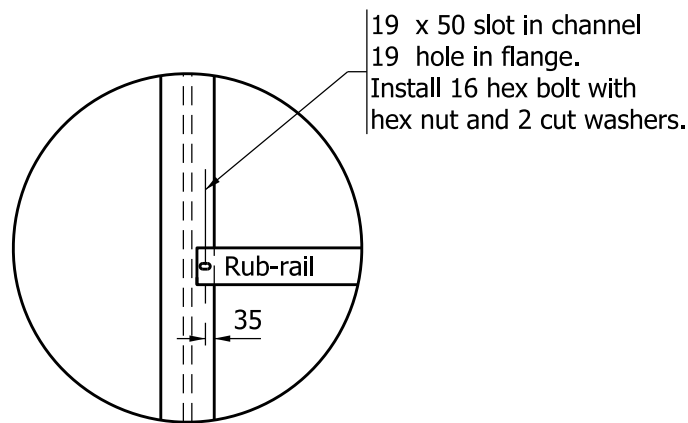
1. If rub-rail is not spliced at post, the channel shall be cut and repositioned behind the flange.
2. If rub-rail is spliced at post, the splice material shall be removed and the channel shall be repositioned behind the flange.



**ELEVATION**

**GUARDRAIL TRANSITION TYPE VH AT 3810 POST SPACING**

These posts to be driven below the 775 post height by the amount shown



**RUB-RAIL RELOCATION DETAIL**

All Dimensions are in mm unless otherwise specified.

<b>INDIANA DEPARTMENT OF TRANSPORTATION</b>	
<b>GUARDRAIL TRANSITION TYPE VH</b>	
<b>SEPTEMBER 2011</b>	
<b>STANDARD DRAWING NO.</b>	<b>601-TTVH-02</b>
	<i>/s/ Richard L. VanCleave</i> <b>09/01/11</b>
	DESIGN STANDARDS ENGINEER      DATE
	<i>/s/ Mark A. Miller</i> <b>09/01/11</b>
	CHIEF HIGHWAY ENGINEER      DATE
DESIGN STANDARDS ENGINEER	