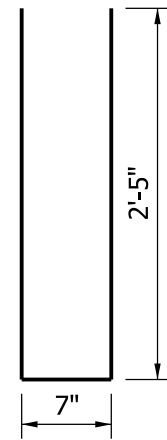
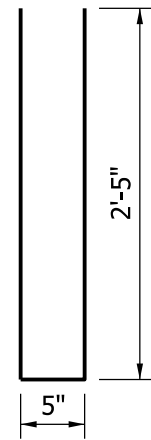


NOTE:

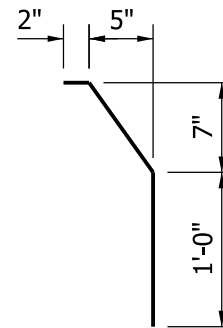
1. See Standard Drawing E 706-TASE-05 for General Notes.



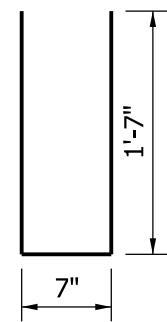
582b x 5'-5"



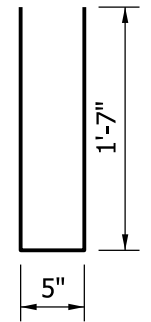
582b x 5'-3"



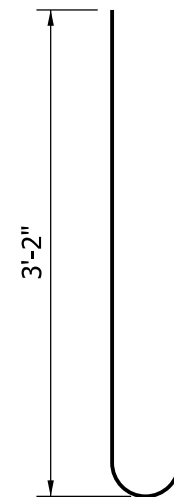
585 x 2'-0"



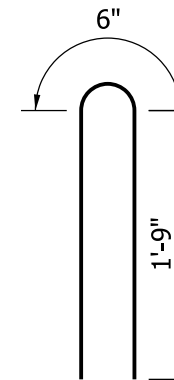
584a x 3'-9"



584b x 3'-7"



589 x 3'-9"



583 x 4'-0"

**3'-9" TRUCK HEIGHT THRIE BEAM/
CONCRETE BRIDGE RAILING TRANSITION**

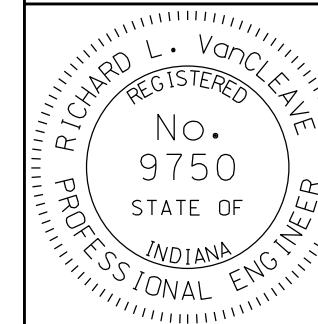
BILL OF MATERIALS			
These quantities are for one concrete bridge railing transition type TBT.			
EPOXY COATED REINFORCING STEEL			
Size and Mark	No. of Bars	Length (Ft.-in.)	Weight (Lbs.)
582a	21	5'-5"	
582b	16	5'-3"	
583	28	4'-0"	
584a	21	3'-9"	
584b	16	3'-7"	
585	16	2'-0"	
#5	9	15'-1"	
#5	1	8'-4"	
#5	2	6'-8"	
#5	14	6'-0"	
Total #5 Bars			1133
Total Epoxy Coated Steel			1133
Concrete Class C in Railing			2.0 yd ³
Surface Seal			13.4 yd ²

INDIANA DEPARTMENT OF TRANSPORTATION

CONCRETE BRIDGE RAILING
TRANSITION TYPE TBT

SEPTEMBER 2011

STANDARD DRAWING NO. E 706-TTBT-03



DESIGN STANDARDS ENGINEER

/s/ *Richard L. VanCleave* 09/01/11
DESIGN STANDARDS ENGINEER DATE

/s/ *Mark A. Miller* 09/01/11
CHIEF HIGHWAY ENGINEER DATE