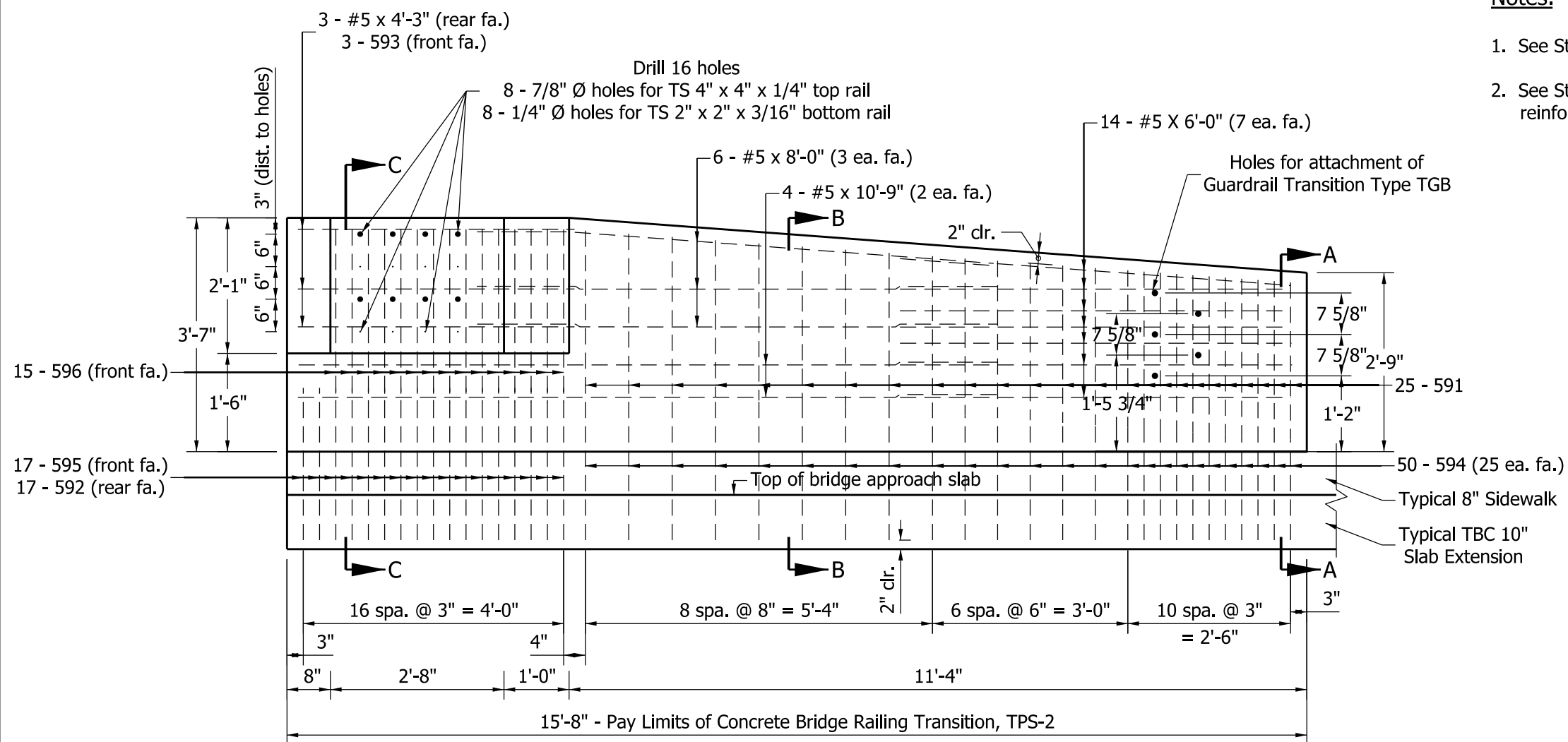
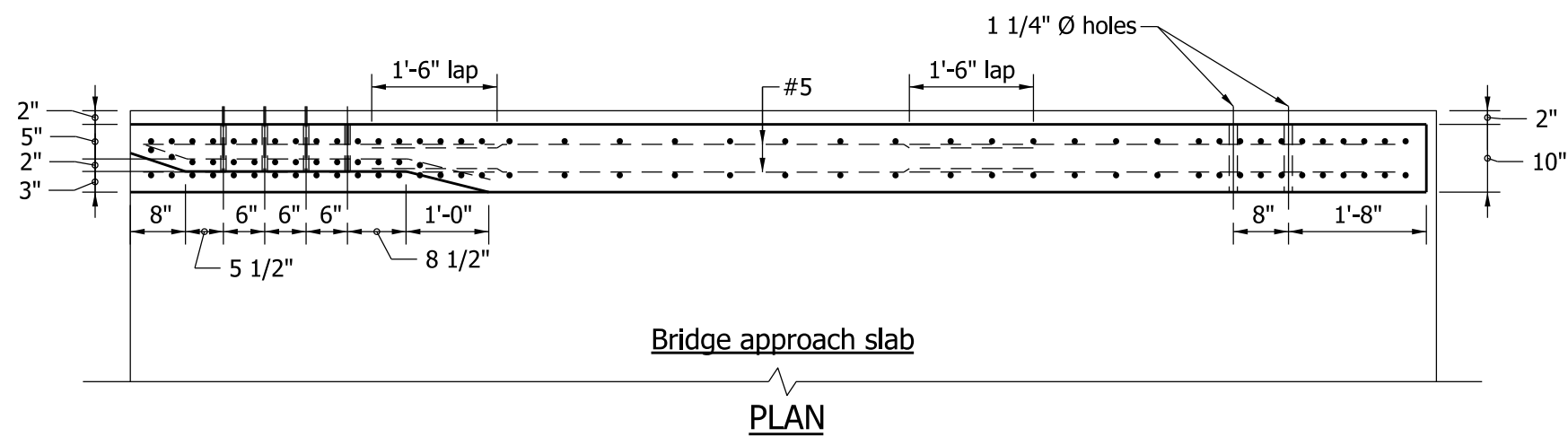


Notes:

1. See Standard Drawing E 706-TTBP-09 for general notes.
2. See Standard Drawing E 706-TTBP-08 for sections and reinforcing-bar diagrams.



BILL OF MATERIALS, TPF-2 EPOXY-COATED REINFORCING STEEL			
Mark / Size	No. of Bars	Total Length	Weight
591 x 5'-4"	25	133'-4"	
592 x 5'-4"	17	90'-8"	
593 x 4'-3"	3	12'-9"	
594 x 4'-3"	50	212'-6"	
595 x 3'-3"	17	55'-3"	
596 x 3'-0"	15	45'-0"	
#5 x 10'-9"	4	43'-0"	
#5 x 8'-0"	6	48'-0"	
#5 x 6'-0"	14	84'-0"	
#5 x 4'-3"	3	12'-9"	
Total Epoxy-Coated Reinforcing Steel		737'-3"	769 lb
MISCELLANEOUS			
Concrete, Class C			1.5 cys
Surface Seal			121 sft



INDIANA DEPARTMENT OF TRANSPORTATION

CONCRETE BRIDGE RAILING
TRANSITION, TPS-2

SEPTEMBER 2011

STANDARD DRAWING NO. E 706-TTBP-07

RICHARD L. VANCLEAVE
REGISTERED
No. 9750
STATE OF
INDIANA
PROFESSIONAL ENGINEER

/s/ Richard L. VanCleave 09/01/11
DESIGN STANDARDS ENGINEER DATE

/s/ Mark A. Miller 09/01/11
CHIEF HIGHWAY ENGINEER DATE

DESIGN STANDARDS ENGINEER