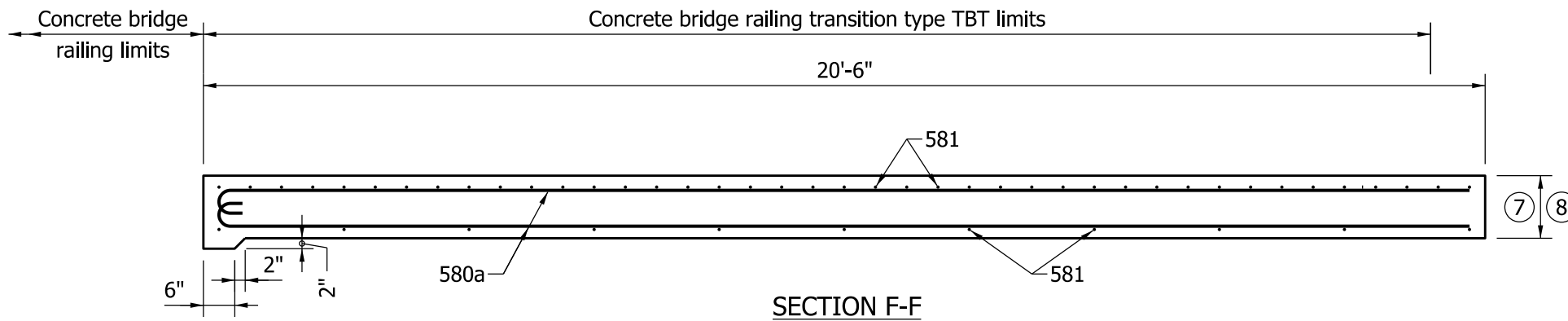
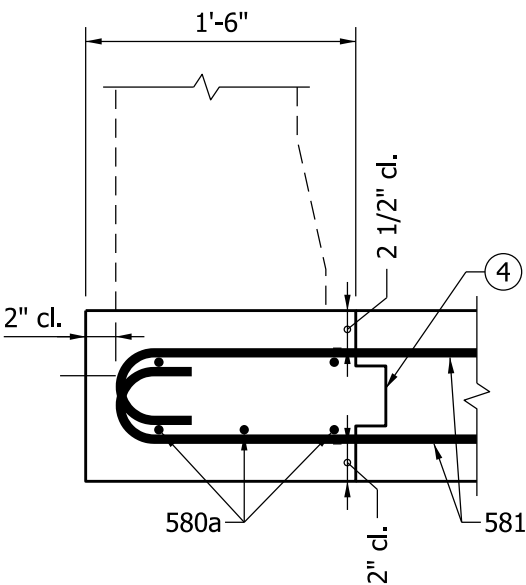


PLAN



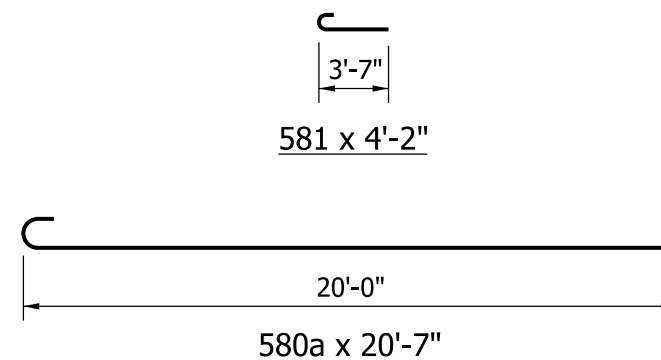
SECTION F-F



SECTION E-E

BILL OF MATERIALS			
These quantities are for one side Approach Slab Extension			
EPOXY COATED REINFORCING STEEL			
SIZE & MARK	No. of Bars	Length (ft.)	Weight (lb)
580a	5	20'-7"	
581	52	4'-2"	
Total #5 Bars			334
Total Expoy Coated Steel			334
MISCELLANEOUS			
R.C. Br. Appr., 10"			3.4 yd <sup>2</sup>

APPROACH SLAB EXTENSION DETAILS



Notes:

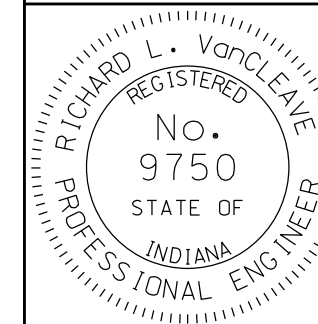
1. See Standard Drawing E 706-TTBT-01 through -03 for concrete bridge railing transition type TBT details.
2. See Standard Drawing E 706-TASE-05 for General Notes.

INDIANA DEPARTMENT OF TRANSPORTATION

BRIDGE RAILING TRANSITION  
TBT SLAB EXTENSION

SEPTEMBER 2011

STANDARD DRAWING NO. E 706-TASE-02



/s/ Richard L. VanCleave 09/01/11

DESIGN STANDARDS ENGINEER DATE

/s/ Mark A. Miller 09/01/11

CHIEF HIGHWAY ENGINEER DATE

DESIGN STANDARDS ENGINEER