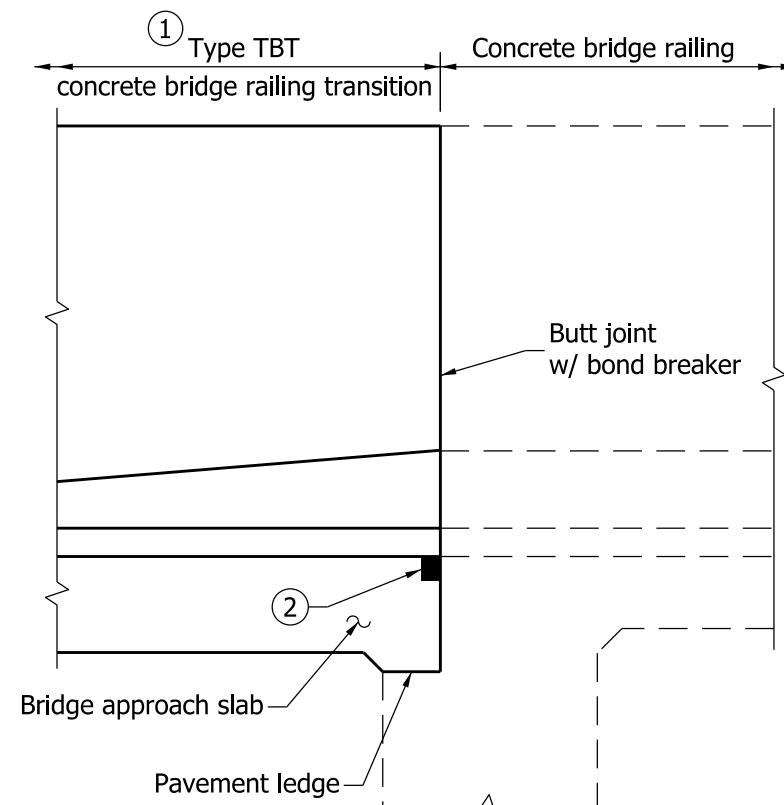


PART ELEVATION

SECTION A-A



DETAIL AT INTEGRAL END BENT

NOTES:

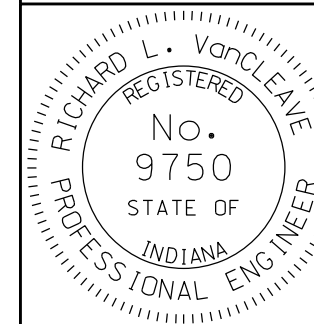
- ① See Standard Drawings E 706-TTBT-01 through -03 for concrete bridge railing transition type TBT details.
- ② See Standard Drawing E 724-BJTS-01 for type IA joint details.
- ③ This section of railing is part of the concrete bridge railing and shall be billed with the concrete railing on the bridge. The minimum length of this section shall be equal to the thickness of the mudwall, but the actual length of this section will depend on the position of the concrete bridge railing transition type TBT along the bridge approach slab, as shown on the plans. See Standard Drawing E 706-BCBR-01 for concrete bridge railing dimensions.

INDIANA DEPARTMENT OF TRANSPORTATION

BRIDGE RAILING TRANSITION TBT
DETAILS AT END BENT

SEPTEMBER 2011

STANDARD DRAWING NO. E 706-CBRT-03



/s/ Richard L. VanCleave 09/01/11
DESIGN STANDARDS ENGINEER DATE

/s/ Mark A. Miller 09/01/11
CHIEF HIGHWAY ENGINEER DATE

DESIGN STANDARDS ENGINEER