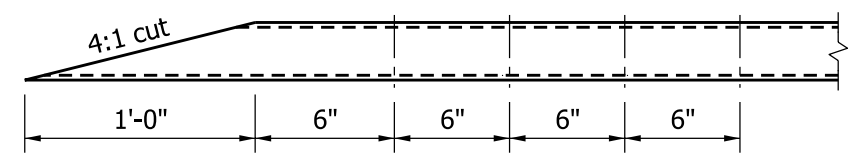


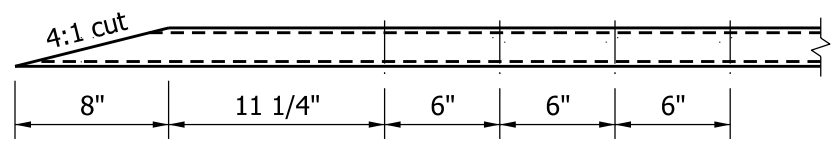
4 - 3/4" ϕ x 1'-2" length round head bolts in 7/8" ϕ holes (top rail). Holes are to be slotted as required for expansion.

4 - 3/16" ϕ x 1'-0" length round head bolts in 1/4" ϕ holes (bottom rail). Holes are to be slotted as required for expansion.

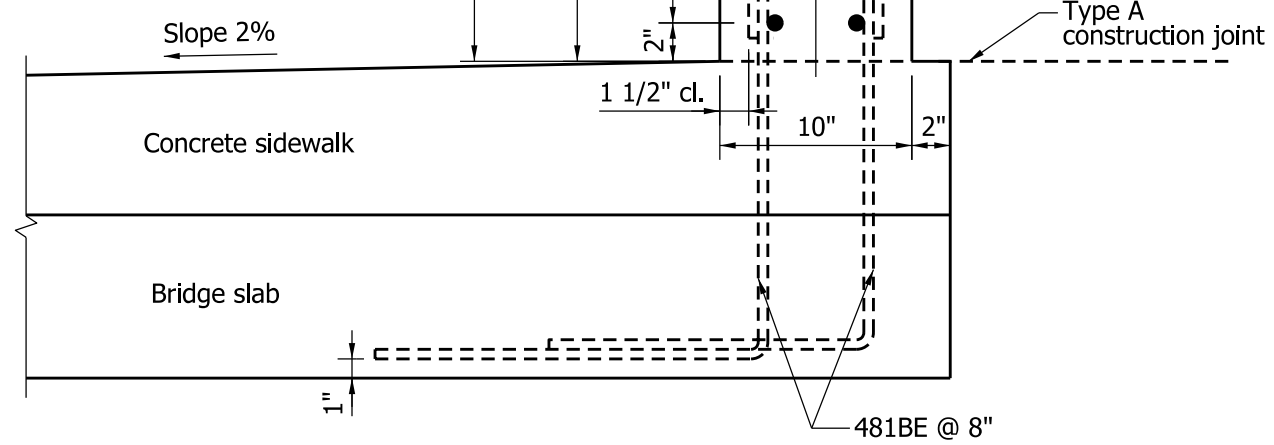
* Field measure distance to holes on concrete transition.



TOP VIEW
(Plan view of top rail)

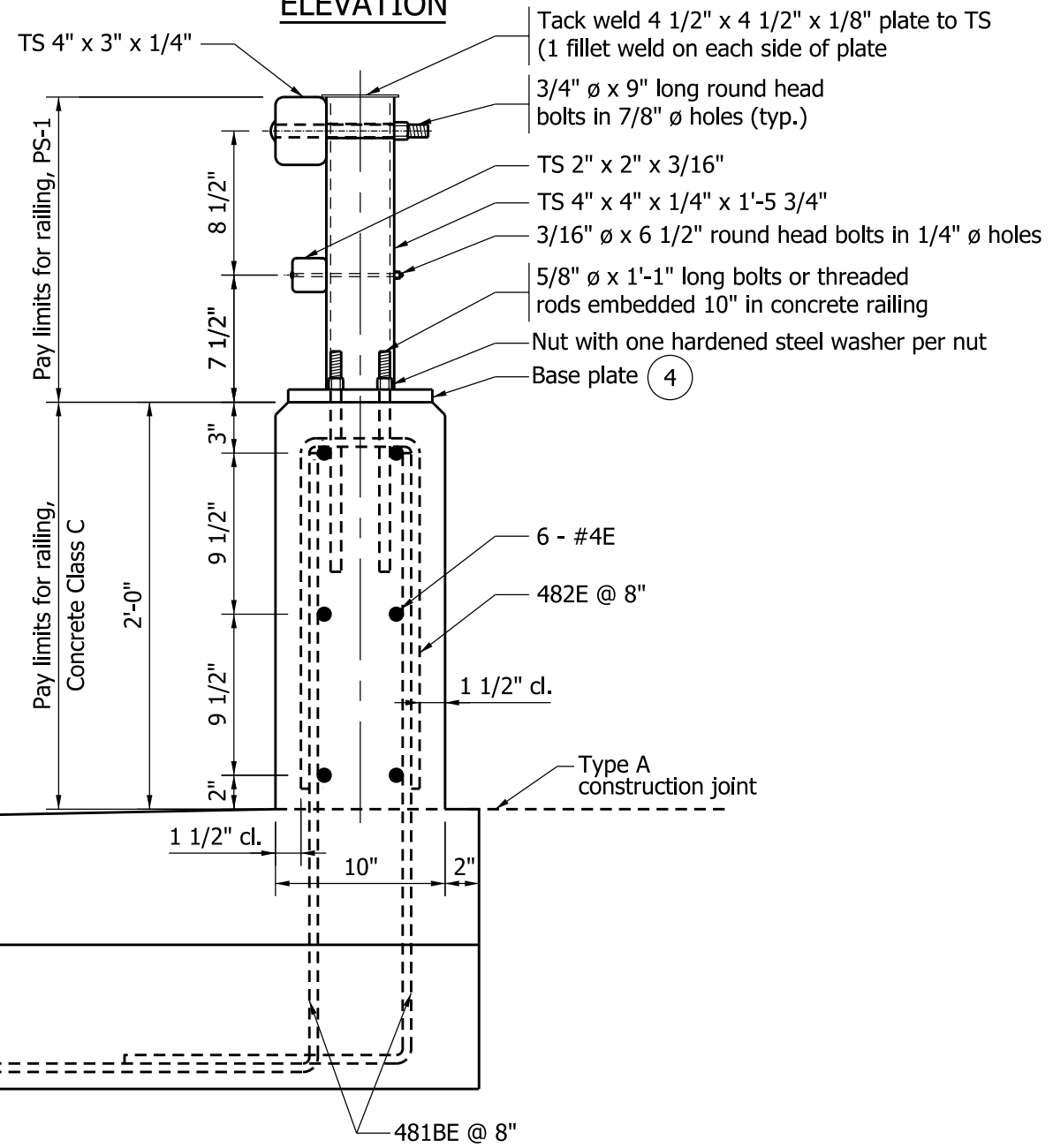


TOP VIEW
(Plan view of bottom rail)



TYPICAL SECTION

ELEVATION



NOTES

- All chamfered edges shall be 1".
- Intermediate railing splices shall be placed every 20'-0" with center of connection at span quarter points.
- See Standard Drawing E 706-BRPP-05 for railing tube details and inner sleeve details.
- See Standard Drawing E 706-BRPP-06 for base plate detail and reinforcing bar bends.
- See Standard Drawing E 706-TTBP-05 and -06 for Concrete Bridge Transition, TPS-1.
- See Standard Drawing E 703-BRST-01 for standard 180° bar bending details.
- All reinforcing bars designated "E" shall be epoxy coated.
- Reinforcing bars in sidewalk shall match that shown on the bridge plans.

INDIANA DEPARTMENT OF TRANSPORTATION	
RAILING, PS-1	
SEPTEMBER 2011	
STANDARD DRAWING NO.	E 706-BRPP-03
	/s/ <i>Richard L. VanCleave</i> 09/01/11
	DESIGN STANDARDS ENGINEER DATE
	/s/ <i>Mark A. Miller</i> 09/01/11
DESIGN STANDARDS ENGINEER	CHIEF HIGHWAY ENGINEER DATE