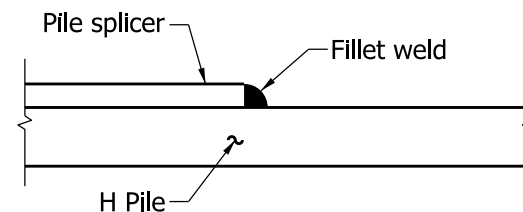
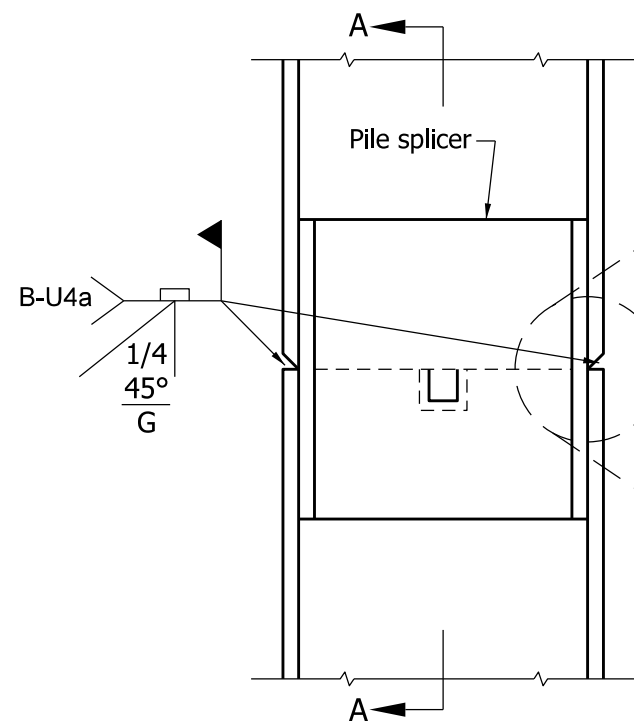


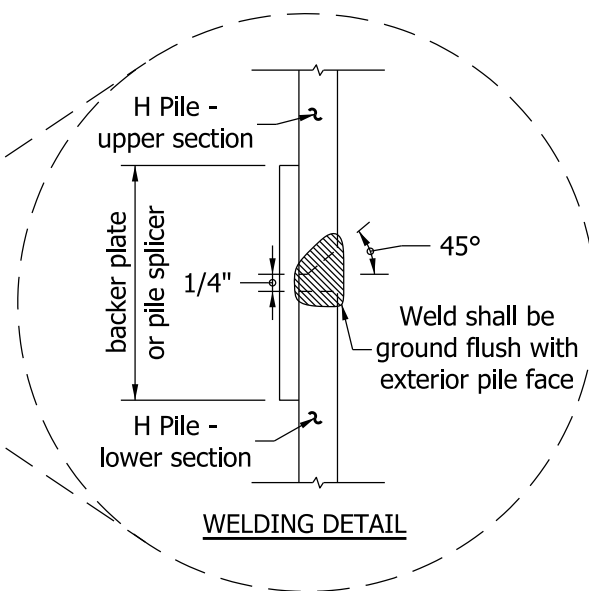
PLAN



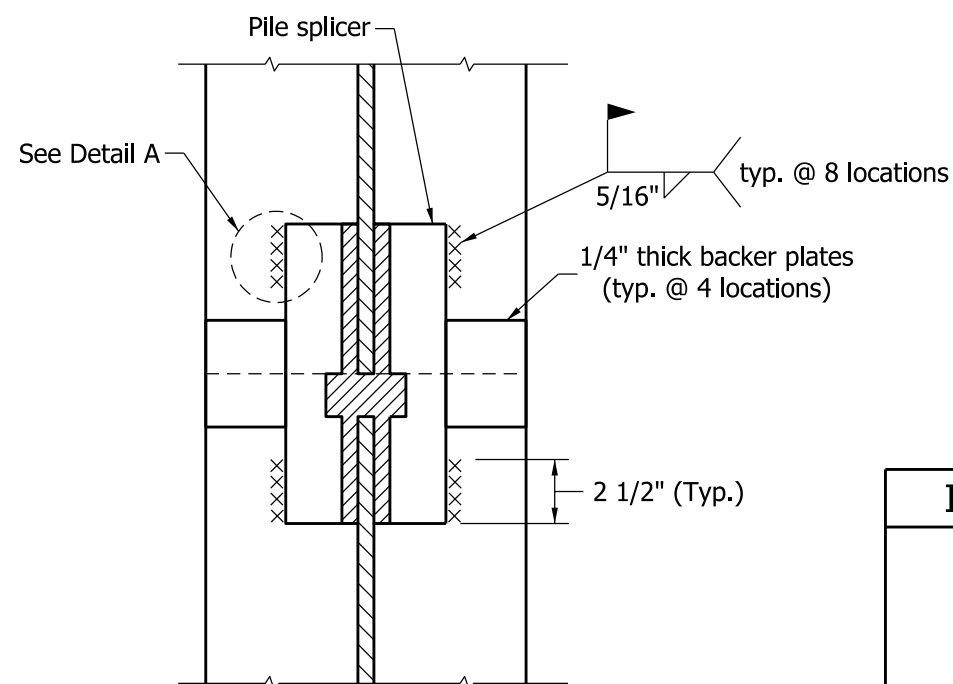
DETAIL A



ELEVATION



ALTERNATE STEEL H PILE SPLICE
USING COMMERCIAL PILE SPLICER



SECTION A-A

INDIANA DEPARTMENT OF TRANSPORTATION			
ALTERNATE STEEL H-PILE SPLICE			
SEPTEMBER 2011			
STANDARD DRAWING NO.		E 701-BPIL-06	
	/s/ <i>Richard L. VanCleave</i>		09/01/11
	DESIGN STANDARDS ENGINEER		DATE
	/s/ <i>Mark A. Miller</i>		09/01/11
DESIGN STANDARDS ENGINEER	CHIEF HIGHWAY ENGINEER		DATE