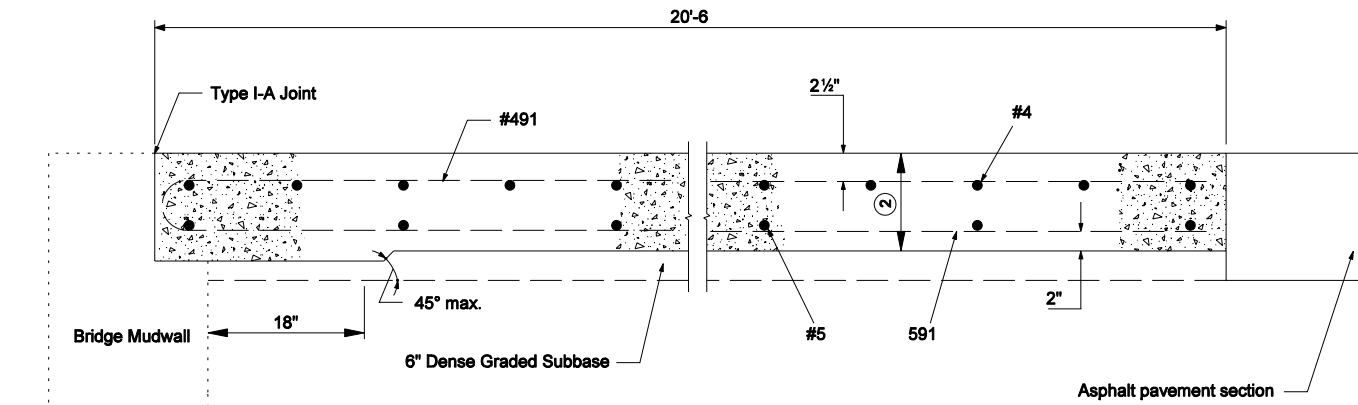


NOTES

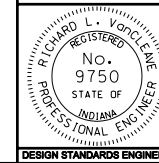
1. For reinforcement details, see Standard Drawing E 609-RCBA-03 for square RCBA's and Standard Drawing E 609-RCBA-04 for skewed RCBA's.
- ② 10" if design year AADT < 1000
12" if design year AADT ≥ 1000
3. All reinforcing bars shall be epoxy coated.
4. See Standard Drawings E 609-RCBA-07 and E 609-BRJT-01 for details of Type I-A Joint.



INDIANA DEPARTMENT OF TRANSPORTATION

**REINFORCED CONCRETE
BRIDGE APPROACH FOR USE
WITH ASPHALT PVMT.
SEPTEMBER 2005**

STANDARD DRAWING NO. E 609-RCBA-01



/s/ Richard L. VanCleave 9-01-05
DESIGN STANDARDS ENGINEER DATE

/s/ Richard K. Smutzer 9-01-05
CHIEF HIGHWAY ENGINEER DATE

DESIGN STANDARDS ENGINEER