

FRONT VIEW

SIDE VIEW

W 6 x 9 POST DETAILS

Thrie-Beam Backup Plate (At post where Thrie-Beam splice does not occur)

Face of rail

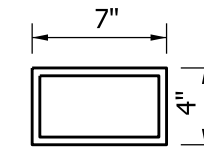
W 6 x 9 Post

Thrie-Beam

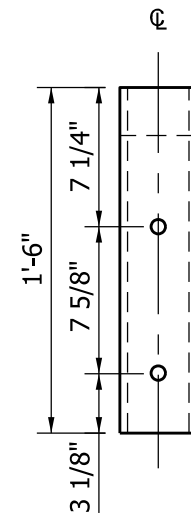
Ground Line

NOTES:

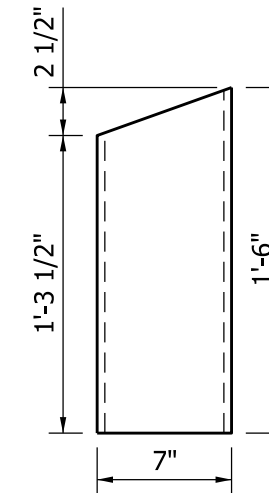
1. All holes drilled or punched to 3/4" dia.
2. See Standard Drawing E 601-TTGB-01 for post numbers.
- ③ Hole pattern for posts numbers 8 through 10 may be drilled in back flange. See Standard drawing E 601-TTGB-04 or E 601-TTGB-05.



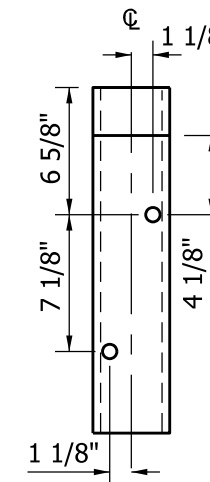
TOP VIEW



FRONT VIEW



SIDE VIEW



BACK VIEW

TS 7 x 4 x 3/16" BLOCK DETAILS
POSTS 1 THROUGH 7

INDIANA DEPARTMENT OF TRANSPORTATION	
GUARDRAIL TRANSITION TYPE TGB	
SEPTEMBER 2011	
STANDARD DRAWING NO.	E 601-TTGB-03
	/s/ <i>Richard L. VanCleave</i> 09/01/11
	DESIGN STANDARDS ENGINEER DATE
DESIGN STANDARDS ENGINEER	/s/ <i>Mark A. Miller</i> 09/01/11
	CHIEF HIGHWAY ENGINEER DATE