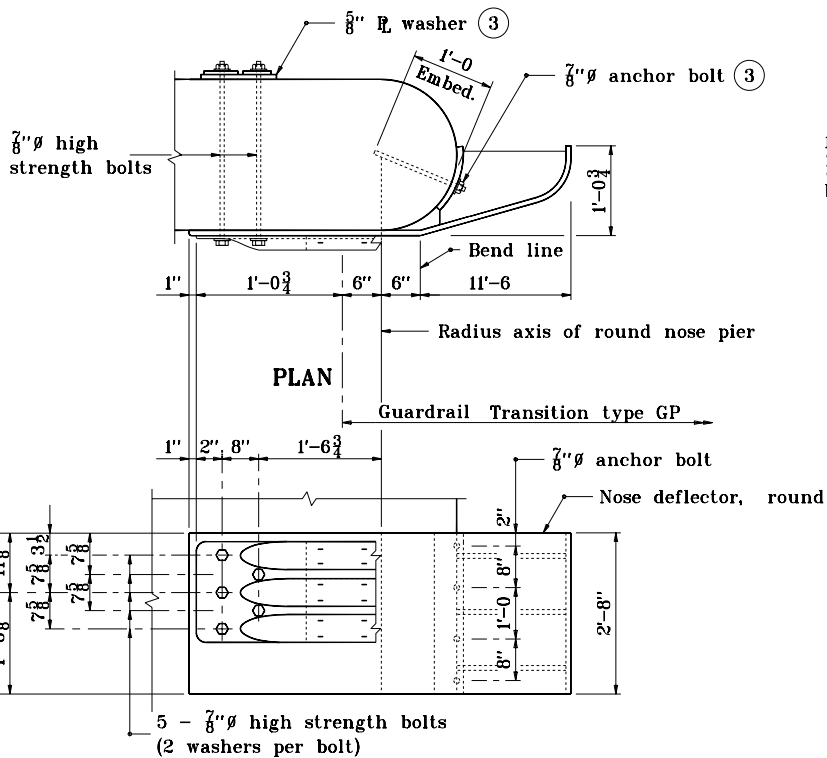


Radius	A	B	C	D
1'-0	2 $\frac{3}{4}$	9 $\frac{1}{2}$	11 $\frac{1}{4}$ "	2 $\frac{3}{4}$ "
1'-1 $\frac{1}{2}$	2 $\frac{3}{8}$	10 $\frac{1}{2}$	9 $\frac{3}{8}$ "	4 $\frac{3}{8}$ "
1'-3	1 $\frac{3}{4}$	11 $\frac{1}{2}$	8 $\frac{3}{8}$ "	4 $\frac{3}{8}$ "
1'-4 $\frac{1}{2}$	1 $\frac{1}{2}$	12 $\frac{1}{2}$	7 $\frac{3}{8}$ "	7 $\frac{3}{8}$ "
1'-6	1 $\frac{1}{4}$	13 $\frac{1}{2}$	6 $\frac{1}{4}$ "	8 $\frac{3}{4}$ "

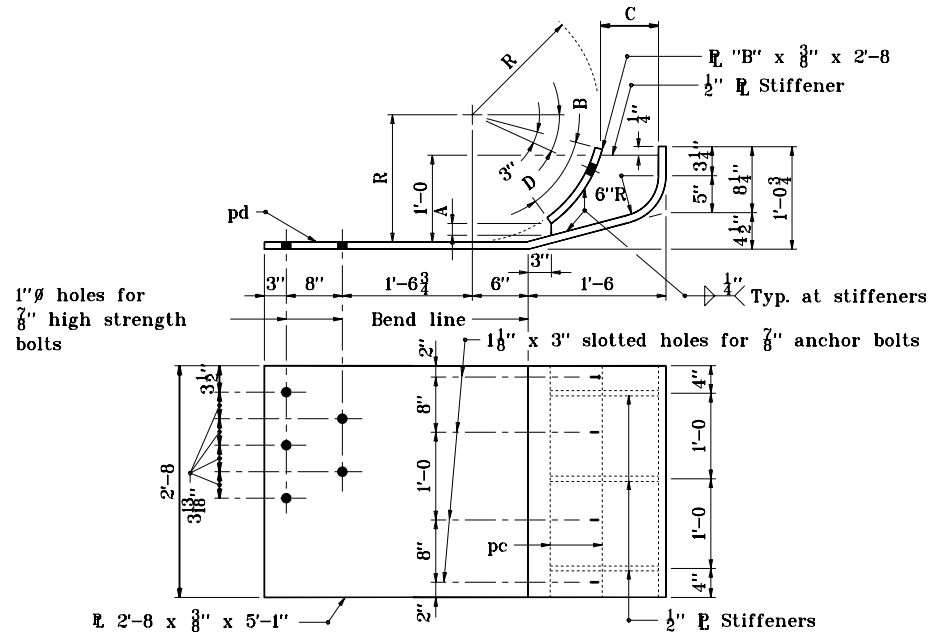


ELEVATION

ATTACHMENT AT ROUND NOSE PIER

GENERAL NOTES

1. This drawing shall be used where guardrail transition type GP is specified to connect W-beam guardrail to a pier or frame bent collision wall.
2. The details on this drawing are for the assembly and installation of the deflector components for connecting guardrail transition type GP to a pier or frame bent collision wall.
3. See Standard Drawing E 601-TPGP-01 for anchor bolt and plate washer details.



DETAIL OF NOSE DEFLECTOR - ROUND

INDIANA DEPARTMENT OF TRANSPORTATION	
TRANSITION AT PIER TYPE GP	
SEPTEMBER 1998	
STANDARD DRAWING NO. E 601-TPGP-02	
	DETAILS PLACED IN THIS FORMAT 11-15-99
<i>/s/ Anthony L. Uremovich</i> 11-15-99 DESIGN STANDARDS ENGINEER DATE	<i>/s/ Firooz Zandi</i> 11-15-99 CHIEF HIGHWAY ENGINEER DATE
DESIGN STANDARDS ENGINEER	ORIGINALLY APPROVED 9-01-98