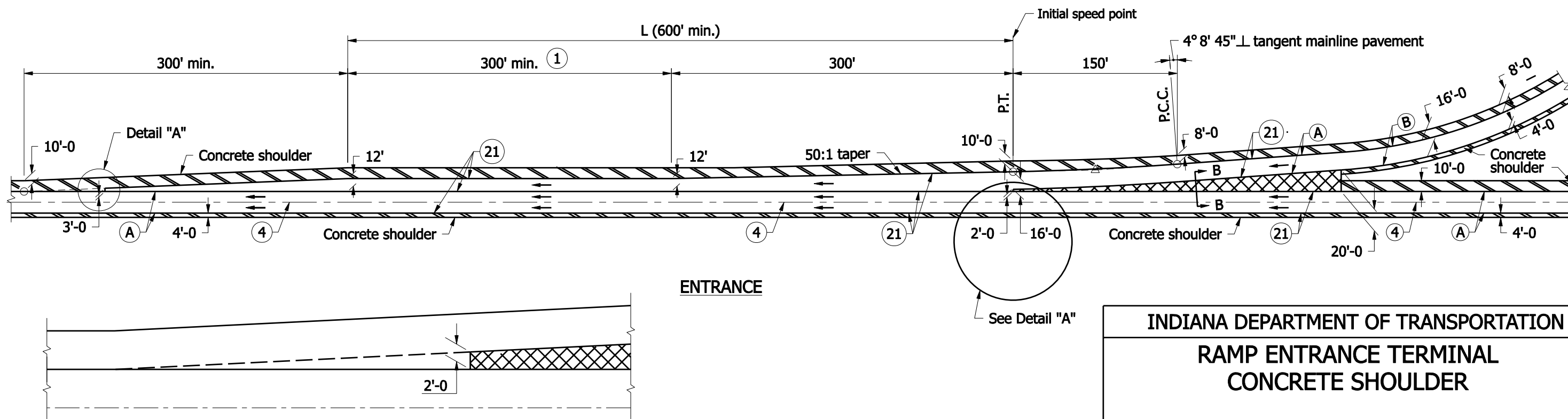


GENERAL NOTES

- ① Pavement contraction joints shall be extended through the concrete shoulder in the gore areas.
- ② Shoulder corrugations shall be omitted in this area.
- ③ Any required additional length of L above the 600' minimum shall be added to the length of this parallel lane segment.
(Example: required L = 700' then this parallel lane segment length = 400')
4. See tables on Standard Drawing E 401-REBS-04.
5. See Standard Drawing E 401-REBS-03 for Section B-B.

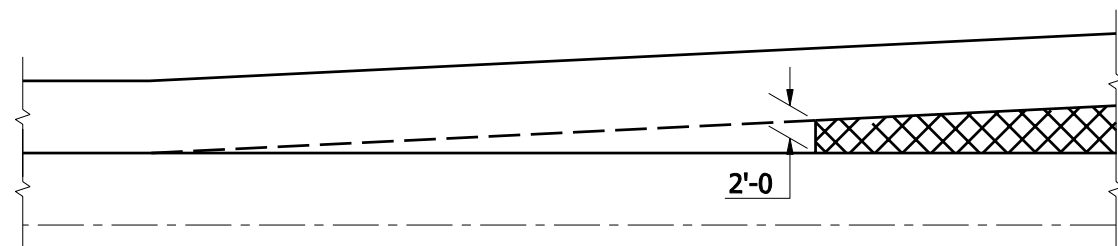
CURVE DATA

$\Delta = 3^{\circ}00'00''$
 $R = 2864.79'$
 $T = 75.02'$
 $L = 150.0'$
 $E = 0.98'$



ENTRANCE

DETAIL "A"



LEGEND

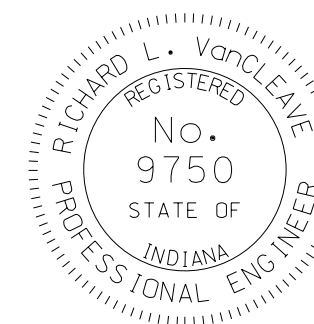
- Ⓐ Pavement type and thickness as specified for the mainline.
- Ⓑ Pavement type and thickness as specified for ramps.
- ④ Longitudinal joint
- ②① Longitudinal construction joint
- ▨ Concrete shoulder (Thickness of mainline pavement)
- ▩ Concrete shoulder (Thickness as specified on Typical Sections)

INDIANA DEPARTMENT OF TRANSPORTATION

**RAMP ENTRANCE TERMINAL
 CONCRETE SHOULDER**

SEPTEMBER 2008

STANDARD DRAWING NO. E 501-RECS-01



DESIGN STANDARDS ENGINEER

/s/ Richard L. VanCleave 09/02/08
 DESIGN STANDARDS ENGINEER DATE

/s/ Mark A. Miller 09/02/08
 CHIEF HIGHWAY ENGINEER DATE