

All dimensions are in mm unless otherwise specified.

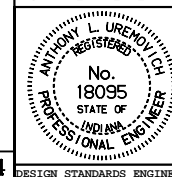
INDIANA DEPARTMENT OF TRANSPORTATION

FLAT TOP GRATE CASTING

TYPE 2

SEPTEMBER 1998

STANDARD DRAWING NO. 720-MHCA-01



/s/ Anthony L. Uremovich 9-01-98  
DESIGN STANDARDS ENGINEER DATE

/s/ Donald W. Lucas 9-01-98  
CHIEF HIGHWAY ENGINEER DATE

Source Sheet: MC4

DESIGN STANDARDS ENGINEER