

ALUMINUM ALLOY STRUCTURAL PLATE PIPE-ARCH

SPAN	RISE	H	R	S	SINGLE PIPE		DOUBLE PIPE		TRIPLE PIPE	
					G	m ³ CONC., 2 ANCHORS	G	m ³ CONC., 2 ANCHORS	G	m ³ CONC., 2 ANCHORS
2010	1730	1520	1220	3150	2440	2.6	5590	6.6	8740	10.6
2110	1750	1520	1270	3300	2540	2.7	5840	6.8	9140	11.0
2210	1800	1520	1320	3450	2640	2.7	6090	7.1	9540	11.5
2360	1830	1520	1400	3680	2790	2.9	6480	7.6	10160	12.3
2460	1850	1520	1450	3810	2900	3.0	6710	7.8	10520	12.6
2570	1910	1570	1500	3910	3000	3.1	6910	8.1	10820	13.1
2690	1930	1570	1560	4040	3120	3.2	7160	8.3	11200	13.4
2820	1960	1570	1630	4170	3250	3.3	7430	8.6	11600	13.8
2920	1980	1570	1680	4270	3350	3.4	7630	8.7	11900	14.0
3020	2030	1570	1730	4370	3450	3.5	7830	8.9	12200	14.3
3120	2060	1570	1780	4470	3560	3.6	8030	9.1	12500	14.6
3280	2080	1650	1850	4620	3710	3.8	8320	9.5	12940	15.3
3380	2130	1650	1910	4720	3810	3.9	8540	9.7	13260	15.6
3480	2160	1650	1960	4830	3910	4.0	8750	9.9	13580	15.8
3580	2180	1650	2010	4930	4010	4.0	8950	10.1	13880	16.1
3730	2210	1680	2080	5080	4170	4.2	9240	10.4	14320	16.6
3840	2260	1680	2130	5180	4270	4.3	9440	10.6	14620	16.9
3940	2290	1680	2180	5280	4370	4.4	9640	10.8	14920	17.2
3990	2490	1680	2210	5330	4420	4.4	9750	10.9	15080	17.3
3990	2540	1680	2210	5330	4420	4.4	9750	10.9	15080	17.3
4240	2570	1750	2340	5590	4670	4.7	10270	11.5	15860	18.3
4270	2620	1750	2350	5610	4700	4.7	10310	11.5	15920	18.3
4240	2870	1750	2340	5590	4670	4.7	10270	11.5	15860	18.3
4340	2920	1750	2390	5690	4780	4.8	10470	11.7	16160	18.5
4470	2950	1750	2450	5820	4900	4.9	10720	11.9	16540	18.9
4550	3000	1750	2490	5890	4980	5.0	10870	12.0	16760	19.1
4670	3050	1830	2550	6020	5110	5.1	11120	12.4	17140	19.7
4750	3100	1830	2590	6100	5180	5.2	11280	12.5	17380	19.9
4900	3150	1830	2670	6250	5330	5.3	11590	12.8	17840	20.3
4980	3200	1830	2710	6330	5410	5.4	11750	13.0	18080	20.5
5110	3250	1830	2770	6450	5540	5.5	11990	13.2	18440	20.9
5180	3300	1830	2810	6530	5610	5.6	12150	13.3	18680	21.1
5260	3350	1830	2850	6600	5690	5.6	12300	13.5	18900	21.3
5410	3400	1910	2910	6740	5840	5.8	12560	13.9	19300	21.9
5490	3450	1910	2960	6820	5920	5.9	12740	14.0	19560	22.2
5610	3510	1910	3020	6940	6040	6.0	12980	14.2	19920	22.5
5690	3560	1910	3060	7020	6120	6.1	13140	14.4	20160	22.7
5840	3580	1910	3130	7170	6270	6.2	13430	14.6	20600	23.1
5920	3630	1910	3170	7250	6350	6.3	13590	14.8	20840	23.3
6050	3680	1910	3240	7380	6480	6.4	13860	15.0	21240	23.7
6120	3730	1910	3270	7450	6550	6.5	13990	15.2	21440	23.9
6120	3810	1990	3270	7450	6550	6.5	13990	15.3	21440	24.1
6350	3840	1990	3390	7680	6780	6.7	14460	15.7	22140	24.8
6430	3890	1990	3430	7760	6860	6.8	14620	15.9	22380	25.0
6430	3940	1990	3430	7760	6860	6.8	14620	15.9	22380	25.0
6120	4240	1990	3270	7450	6550	6.5	13990	15.3	21440	24.1
6270	4340	1990	3350	7600	6700	6.6	14300	15.6	21900	24.6
6530	4450	1990	3480	7860	6960	6.9	14820	16.1	22680	25.3
6680	4550	1990	3550	8010	7110	7.0	15110	16.3	23120	25.7
6910	4650	1990	3670	8240	7340	7.2	15580	16.8	23820	26.3

GENERAL NOTES

1. Refer to Standard Drawing 717-SPCA-01 for single pipe anchor details.
2. Refer to Standard Drawings 717-MPCA-01 and 717-MPCA-02 for multiple pipe anchor details.

All dimensions are in mm unless otherwise specified.

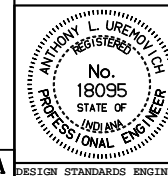
INDIANA DEPARTMENT OF TRANSPORTATION

CONCRETE ANCHOR

TABLES

JANUARY 1998

STANDARD DRAWING NO. 717-ANCH-03



/s/ Anthony L. Uremovich 1-02-98
DESIGN STANDARDS ENGINEER DATE

/s/ Donald W. Lucas 1-02-98
CHIEF HIGHWAY ENGINEER DATE

Source Sheet: ME1A