

**NOTE:**

1. The tabulated cover depths shall be measured from the bottom of the bituminous or concrete pavement to the top of the pipe.

**REINFORCED CONCRETE CIRCULAR PIPE  
HEIGHT OF COVER LIMITS (m)**

DIAMETER (mm)	Strength Class/D-load Rating											
	Class II: D <sub>0.3</sub> = 50		Class III: D <sub>0.3</sub> = 60		Class III: D <sub>0.3</sub> = 65		Class IV: D <sub>0.3</sub> = 75		Class IV: D <sub>0.3</sub> = 85		Class IV: D <sub>0.3</sub> = 100	
	MIN.	MAX.	MIN.	MAX.	MIN.	MAX.	MIN.	MAX.	MIN.	MAX.	MIN.	MAX.
300	0.43	1.8	0.34	3.0	0.34	3.7	0.30	4.6	0.30	7.3	0.30	30.5
375	0.34	2.4	0.30	3.7	0.30	4.3	0.30	5.8	0.30	10.7	0.30	30.5
450	0.30	2.7	0.30	4.3	0.30	5.2	0.30	6.7	0.30	15.8	0.30	30.5
525	0.30	3.0	0.30	4.6	0.30	5.5	0.30	7.3	0.30	25.6	0.30	30.5
600	0.30	3.4	0.30	5.2	0.30	6.1	0.30	7.9	0.30	25.9	0.30	30.5
675	0.30	3.0	0.30	4.0	0.30	4.6	0.30	5.8	0.30	7.9	0.30	12.8
750	0.30	3.0	0.30	4.3	0.30	4.9	0.30	6.1	0.30	8.5	0.30	13.4
825	0.30	3.0	0.30	4.6	0.30	5.2	0.30	6.1	0.30	8.8	0.30	13.7
900	0.30	3.4	0.30	4.6	0.30	5.2	0.30	6.4	0.30	8.8	0.30	13.7
1050	0.30	3.4	0.30	4.9	0.30	5.5	0.30	6.7	0.30	9.1	0.30	13.4
1200	0.30	3.7	0.30	5.2	0.30	5.8	0.30	6.7	0.30	9.1	0.30	13.1
1350	0.30	3.7	0.30	5.2	0.30	5.8	0.30	7.0	0.30	9.4	0.30	12.8
1500	0.30	3.0	0.30	4.0	0.30	4.3	0.30	5.2	0.30	6.4	0.30	7.9
1650	0.30	3.0	0.30	4.3	0.30	4.6	0.30	5.2	0.30	6.4	0.30	7.9
1800	0.30	3.4	0.30	4.3	0.30	4.6	0.30	5.5	0.30	6.7	0.30	8.2
1950	0.30	3.4	0.30	4.3	0.30	4.9	0.30	5.5	0.30	6.7	0.30	8.2
2100	0.30	3.4	0.30	4.6	0.30	4.9	0.30	5.8	0.30	7.0	0.30	8.5
2250	0.30	3.4	0.30	4.6	0.30	4.9	0.30	5.8	0.30	7.0	0.30	8.5
2400	0.30	3.4	0.30	4.6	0.30	5.2	0.30	5.8	0.30	7.0	0.30	8.5
2550	0.34	3.7	0.34	4.6	0.34	5.2	0.34	5.8	0.34	7.3	0.34	8.8
2700	0.37	3.7	0.37	4.6	0.37	5.2	0.37	6.1	0.37	7.3	0.37	8.8
2850	0.37	3.7	0.37	4.9	0.37	5.2	0.37	6.1	0.37	7.3	0.37	8.8
3000	0.40	3.7	0.40	4.9	0.40	5.2	0.40	6.1	0.40	7.3	0.40	8.8
3150	0.43	3.7	0.43	4.9	0.43	5.5	0.43	6.1	0.43	7.3	0.43	8.8
3300	0.43	3.7	0.43	4.9	0.43	5.5	0.43	6.1	0.43	7.6	0.43	8.8
3450	0.46	3.7	0.46	4.9	0.46	5.5	0.46	6.1	0.46	7.6	0.46	8.8
3600	0.46	3.7	0.46	4.9	0.46	5.5	0.46	6.1	0.46	7.6	0.46	8.8

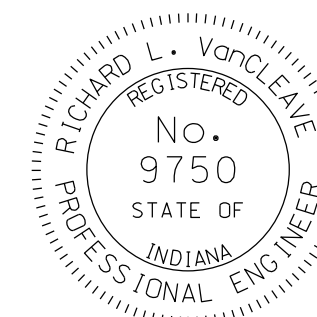
All Dimensions are in mm unless otherwise specified.

**INDIANA DEPARTMENT OF TRANSPORTATION**

**PIPE HEIGHT OF  
COVER LIMITS**

**SEPTEMBER 2009**

**STANDARD DRAWING NO. 715-PHCL-21**



*/s/ Richard L. VanCleave*      09/01/09  
DESIGN STANDARDS ENGINEER      DATE

*/s/ Mark A. Miller*      09/01/09  
CHIEF HIGHWAY ENGINEER      DATE

DESIGN STANDARDS ENGINEER