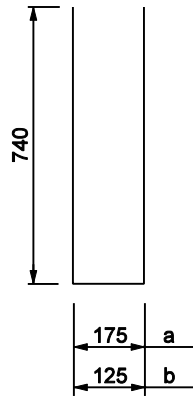


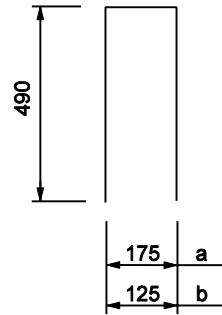
NOTES:

See Standard Drawing 706-TASE-05 for general Notes.



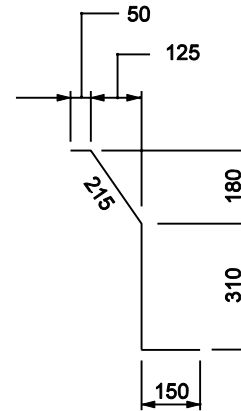
1682a x 1660

1682b x 1610



1684a x 1160

1684b x 1110



1685 x 580

BILL OF MATERIALS

These quantities are for one concrete bridge railing transition type TBC.

EPOXY COATED REINFORCING STEEL			
Size & #	No. of Bars	Length	Weight (kg)
1682a	15	1660	
1682b	16	1610	
1684a	15	1160	
1684b	16	1110	
1685		580	
#16		1700	
Total #16 Bars			177
#13		3500	
Total #13 Bars			24
Total Epoxy Coated Steel			201
MISCELLANEOUS in RAILING			
Concrete, Class C			1.0 m ³
Surface Seal			9.3 m ²

840 COMMON HEIGHT THRIE BEAM /
CONCRETE BRIDGE RAILING TRANSITION

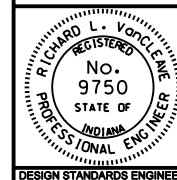
All Dimension are in mm unless otherwise specified

INDIANA DEPARTMENT OF TRANSPORTATION

**CONCRETE BRIDGE RAILING
TRANSITION TYPE TBC**

MARCH 2003

STANDARD DRAWING NO. 706-TTBC-03



/s/ Richard L. VanCleave 3-03-03
DESIGN STANDARDS ENGINEER DATE

/s/ Richard K. Smutzer 3-03-03
CHIEF HIGHWAY ENGINEER DATE

DESIGN STANDARDS ENGINEER