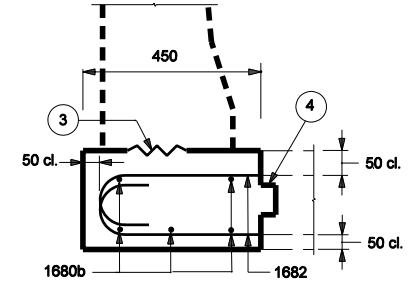
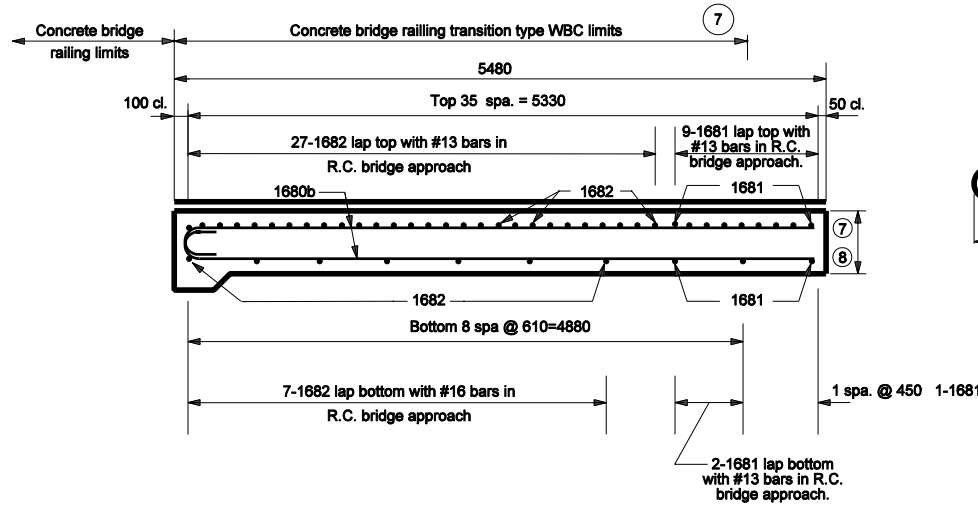


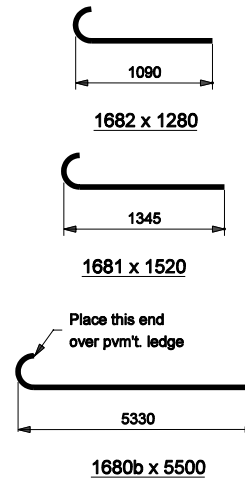
PLAN



SECTION E-E



SECTION F-F



BILL OF MATERIALS			
These quantities are for one approach slab extension.			
EPOXY COATED REINFORCING STEEL			
Size & type	No. of Bars	Length	Weight (kg)
1680b	5	5500	
1681	12	1520	
1682	34	1280	
#16	2	1120	
Total #16 Bars			142
Total Epoxy Coated Steel			142
MISCELLANEOUS			
R.C. Br. Appr.,			2.77 m ²

NOTES :

- See Standard Drawing 706-TWBC-01 through -03 for concrete bridge railing transition WBC details.
- See Standard Drawing 706-TASE-05 for General Notes.

All dimensions are in mm unless otherwise specified

INDIANA DEPARTMENT OF TRANSPORTATION

**BRIDGE RAILING TRANSITION
WBC SLAB EXTENSION**

SEPTEMBER 2004

STANDARD DRAWING NO. 706-TASE-03

	/s/ Richard L. VanCleave	9-01-04
	DESIGN STANDARDS ENGINEER	DATE
	/s/ Richard K. Smutzer	9-01-04
	CHIEF HIGHWAY ENGINEER	DATE

DESIGN STANDARDS ENGINEER