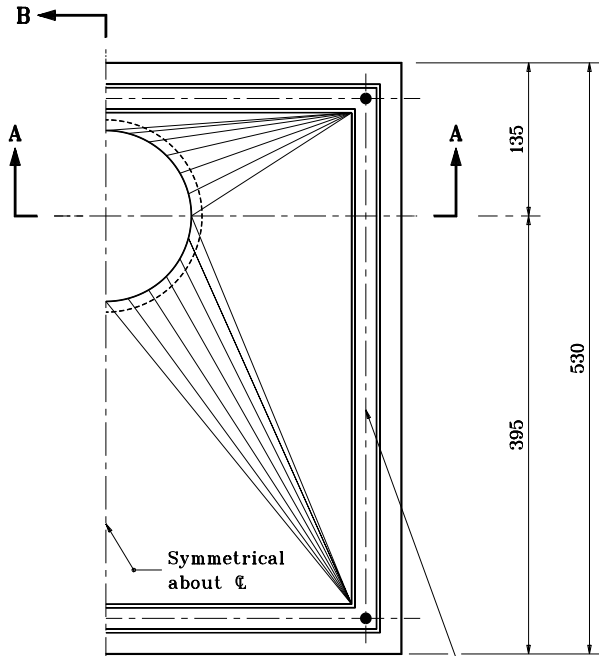


GENERAL NOTES

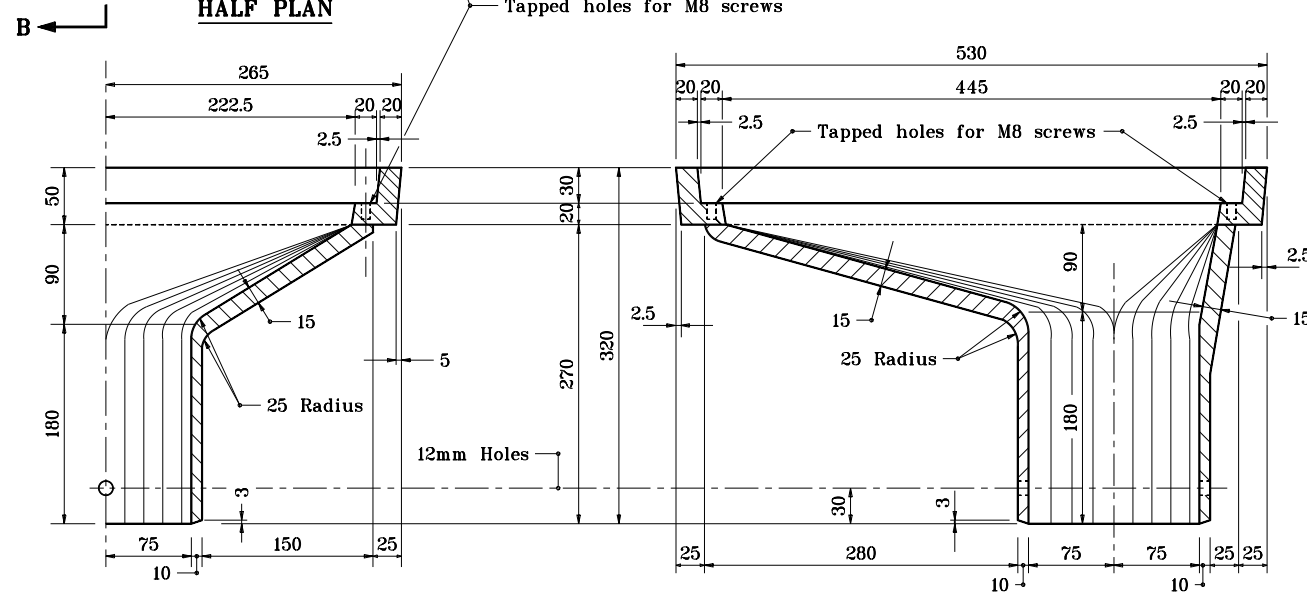
1. For attaching pipe to all drains, use M10x40 hex bolts with 2-M10 lock washers and 2-M10 nuts. (All parts galvanized)
2. The approximate weight of the drain is 54.4 kg.



Symmetrical about ϕ

HALF PLAN

Tapped holes for M8 screws



HALF SECTION A-A

SECTION B-B

Source Sheet:

D

All dimensions are in mm unless otherwise specified.

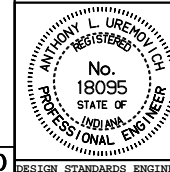
INDIANA DEPARTMENT OF TRANSPORTATION

CASTING DETAILS

ROADWAY DRAIN TYPE SQ

SEPTEMBER 1994

STANDARD DRAWING NO. 704-BDCG-04



/s/ Anthony L. Uremovich 9-30-94
DESIGN STANDARDS ENGINEER DATE

/s/ Donald W. Lucas 9-30-94
CHIEF HIGHWAY ENGINEER DATE

DESIGN STANDARDS ENGINEER