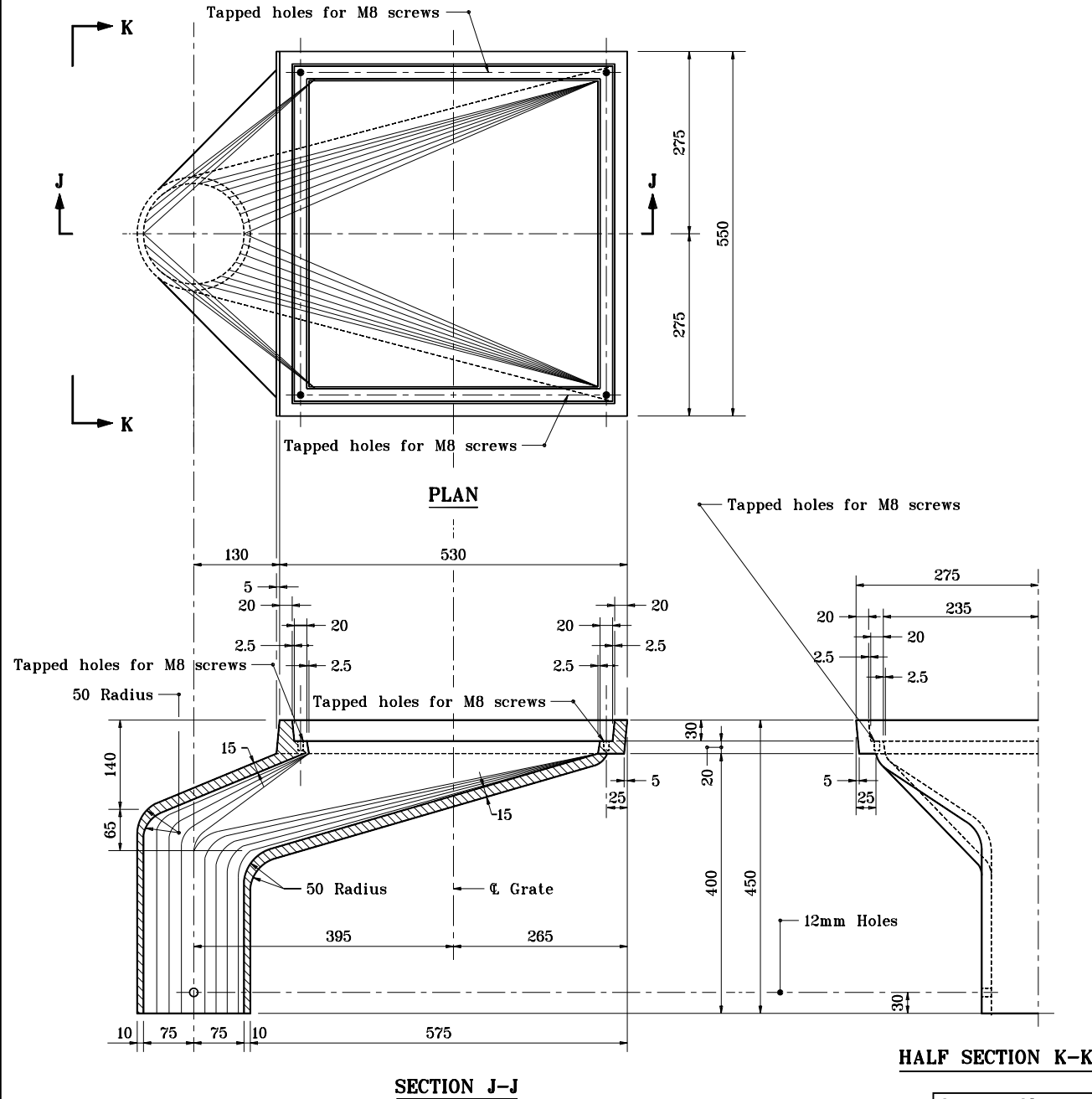


GENERAL NOTES

1. For attaching pipe to all drains, use M10x40 hex bolts with 2-M10 lock washers and 2-M10 nuts. (All parts galvanized)
2. The approximate weight of the drain is 109.8 kg.



All dimensions are in mm unless otherwise specified.

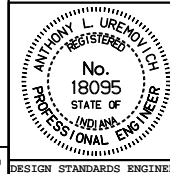
INDIANA DEPARTMENT OF TRANSPORTATION

CASTING DETAILS

ROADWAY DRAIN TYPE OS

SEPTEMBER 1994

STANDARD DRAWING NO. 704-BDCG-03



/s/ Anthony L. Uremovich 9-30-94
DESIGN STANDARDS ENGINEER DATE

/s/ Donald W. Lucas 9-30-94
CHIEF HIGHWAY ENGINEER DATE

Source Sheet: **D**